



Food Rethermalizer/ Bain-Marie Heater

FR-B (BALANCED) Series

FR-3B

FR-6B

FR-4B

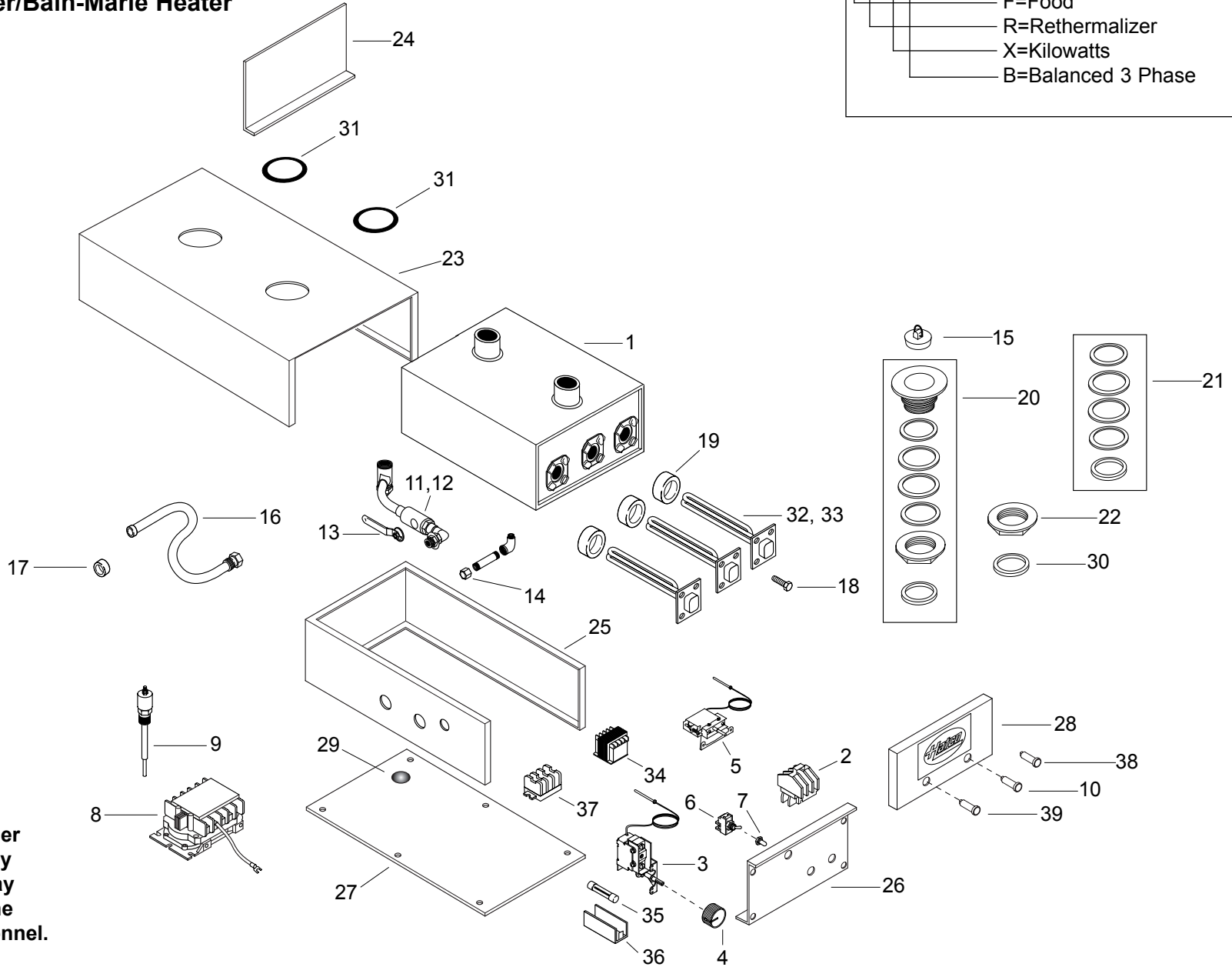
FR-9B

**REPLACEMENT
PARTS LIST**

HATCO FR-BALANCED SERIES
Food Rethermalizer/Bain-Marie Heater

Model Designation

FR-XB	F=Food
	R=Rethermalizer
	X=Kilowatts
	B=Balanced 3 Phase



⚠ CAUTION - Use of replacement parts other than those supplied by Hatco Corporation may result in damage to the unit or injury to personnel.

PARTS COMMON TO ALL FR-B MODELS

ITEM	DESCRIPTION	PART NO.	QTY.	ITEM	DESCRIPTION	PART NO.	QTY.
1	Water Tank	R01.04.006.00	1	18	Mounting Bolts, Elements	05.04.062.00	12
2	Contactora	02.01.016.00	1	19	Gasket, Element	05.06.005.00	3
3	Control, Thermostat 192°F (89°C)	02.16.016.00	1	20	Sink Strainer Assembly Kit	R05.30.009.00	2
4	Knob, Thermostat Control	05.30.021.00	1	21	Strainer Gasket Kit	R00.05.0002.00	1†
5	High Limit, Thermostat 210°F (99°C)	02.16.025A.00	1	22	Brass Locknut	05.30.009A.00	2
6	On/Off Power Switch	R02.19.008A.00	1	23	Jacket, Painted	04.06.089.00	1
7	Rubber Boot, Toggle Switch	02.20.040.00	1		Jacket, S.S.*	04.06.090.00	1
8	Control, Low Water Cut Off, (optional)	02.01.002.00	1	24	Rear Plate, Painted	04.06.022.00	1
9	Probe, Low Water Cut Off, (optional)	02.40.001.00	1		Rear Plate, S.S.*	04.06.004A.00	1
10	Indicator Light, Green	02.19.150.00	1	25	Base, Painted	04.06.113.00	1
11	Ball Valve, Thread Fitting (old style)	03.02.001.00	1		Base, S.S.*	04.06.114.00	1
12	Ball Valve, Sweat Fitting (new style)	03.02.002.00	1	26	Base Front, Painted	04.06.081.00	1
13	Handle, Sump Drain	03.02.001B.00	1		Base Front, S.S.*	04.06.082.00	1
14	Drain Cap, Heating Compartment	R03.40.014.00	1	27	Bottom Cover, Painted	04.06.016.00	1
15	Rubber Stopper	05.06.026.00	1		Bottom Cover, S.S.*	04.06.018.00	1
16	Flush Hose With Adapter	05.06.010.00	1	28	Front Cover For Two		
17	Adapter for Hose	05.06.007.00	1		Indicator Lights, S.S.	04.06.073.00	1
					Front Cover For Three		
					Indicator Lights, S.S.*	04.06.074.00	1
				29	Drain Screen Plug, 1" (3 cm)	02.20.026.00	1
				30	Union Gasket	05.06.009.00	2
				31	Grommets, Black Molded Rubber	05.06.008.00	2

* Not shown.

† Includes all gaskets for both strainers.

Note: S.S. is an abbreviation for stainless steel.

PARTS SPECIFIC TO MODEL FR-3B

ITEM	DESCRIPTION	208V Three Phase	240V Three Phase	415V Three Phase	380-415V CE Three Phase	480V Three Phase
32	Heating Element - Dual, 300/3000 Watts	R02.06.330.00	R02.06.331.00	---	---	---
33	Heating Element, 3000 Watts (Qty. 2-3)	R02.06.300.00	R02.06.301.00	---	R02.06.302.00	R02.06.303.00
34	Transformer	---	---	---	R02.17.003.00	R02.17.002.00
35	Fuse	---	---	---	R02.03.001.02	R02.03.001.02
36	Fuse Holder	---	---	---	02.03.004.00	02.03.004.00
37	Terminal Block	R02.15.003.00	R02.15.003.00	---	R02.15.035.00	R02.15.003.00
38	Indicator Light, Blue	---	---	---	02.19.157.00	---
39	Indicator Light, Yellow	02.19.152.00	02.19.152.00	---	---	02.19.152.00
	Electrical Drawing	HS1-911	HS1-911	---	HS1-4753	HC1-1887

PARTS SPECIFIC TO MODEL FR-4B

ITEM	DESCRIPTION	208V Three Phase	240V Three Phase	415V Three Phase	380-415V CE Three Phase	480V Three Phase
32	Heating Element - Dual, 300/4500 Watts	R02.06.480.00	R02.06.481.00	---	---	---
33	Heating Element, 4500 Watts (Qty. 2-3)	R02.06.450.00	R02.06.451.00	---	---	R02.06.452.00
34	Transformer	---	---	---	---	R02.17.002.00
35	Fuse	---	---	---	---	R02.03.001.02
36	Fuse Holder	---	---	---	---	02.03.004.00
37	Terminal Block	R02.15.003.00	R02.15.003.00	---	---	R02.15.003.00
38	Indicator Light, Blue	---	---	---	---	---
39	Indicator Light, Yellow	02.19.152.00	02.19.152.00	---	---	02.19.152.00
	Electrical Drawing	HS1-911	HS1-911	---	---	HC1-1887

Shaded area reflects export models only.

PARTS SPECIFIC TO MODEL FR-6B

ITEM	DESCRIPTION	208V Three Phase	240V Three Phase	415V Three Phase	380-415V CE Three Phase	480V Three Phase
32	Heating Element - Dual, 300/3000 Watts	R02.06.331.00	R02.06.332.00	---	---	---
33	Heating Element, 3000 Watts (Qty. 2-3)	R02.06.301.00	R02.06.302.00	R02.06.303.00	R02.06.303.00	R02.06.603.00
34	Transformer	---	---	R02.17.002.00	R02.17.002.00	R02.17.002.00
35	Fuse	---	---	R02.03.001.02	R02.03.001.02	R02.03.001.02
36	Fuse Holder	---	---	02.03.004.00	02.03.004.00	02.03.004.00
37	Terminal Block	R02.15.003.00	R02.15.003.00	R02.15.003.00	R02.15.035.00	R02.15.003.00
38	Indicator Light, Blue	---	---	---	02.19.157.00	---
39	Indicator Light, Yellow	02.19.152.00	02.19.152.00	02.19.152.00	---	02.19.152.00
	Electrical Drawing	HS1-299	HS1-1637	HS1-5501	HS1-4754	HS1-532

PARTS SPECIFIC TO MODEL FR-9B

ITEM	DESCRIPTION	208V Three Phase	240V Three Phase	415V Three Phase	380-415V CE Three Phase	480V Three Phase
32	Heating Element - Dual, 300/3000 Watts	R02.06.330.00	R02.06.331.00	---	---	---
33	Heating Element, 3000 Watts (Qty. 2-3)	R02.06.300.00	R02.06.301.00	R02.06.301.00	R02.06.301.00	R02.06.303.00
34	Transformer	---	---	R02.17.002.00	R02.17.002.00	R02.17.002.00
35	Fuse	---	---	R02.03.001.02	R02.03.001.02	R02.03.001.02
36	Fuse Holder	---	---	02.03.004.00	02.03.004.00	02.03.004.00
37	Terminal Block	R02.15.003.00	R02.15.003.00	R02.15.003.00	R02.15.035.00	R02.15.003.00
38	Indicator Light, Blue	---	---	---	02.19.157.00	---
39	Indicator Light, Yellow	02.19.152.00	02.19.152.00	02.19.152.00	---	02.19.157.00
	Electrical Drawing	HC1-2030	HC1-2030	HS1-3639	HS1-4644	HC1-2537

Shaded area reflects export models only.

NOTES

NOTES

HATCO AUTHORIZED PARTS DISTRIBUTORS

ALABAMA

Jones McLeod Appl. Svc.
Birmingham 205-251-0159

ARIZONA

Auth. Comm. Food Equip.
Phoenix 602-234-2443
Byassee Equipment Co.
Phoenix 602-252-0402

CALIFORNIA

Industrial Electric
Huntington Beach 714-379-7100
Chapman Appl. Service
San Diego 619-298-7106
P & D Appliance
S. San Francisco 650-635-1900

COLORADO

All City Service
Denver 303-454-9500
Hawkins Commercial Appliance
Englewood 303-781-5548

DELAWARE

Food Equipment Service
Wilmington 302-996-9363

FLORIDA

Whaley Foodservice Repair
Jacksonville 904-725-7800
Nass Service Co., Inc.
Orlando 407-425-2681
B.G.S.I.
Pompano Beach 954-971-0456
Comm. Appliance Service
Tampa 813-663-0313

GEORGIA

Southeastern Rest. Svc.
Norcross 770-446-6177

HAWAII

Burney's Comm. Service, Inc.
Honolulu 808-848-1466
Food Equip Parts & Service
Honolulu 808-847-4871

ILLINOIS

Parts Town
Broadview 708-865-7278
Eichenauer Elec. Service
Decatur 217-429-4229
Midwest Elec. Appl. Service
Elmhurst 630-279-8000
Cone's Repair Service
Moline 309-797-5323

INDIANA

Comm. Parts & Service, Inc.
Indianapolis 317-545-9655

IOWA

Electric Motor Service Co.
Davenport 319-323-1823

KENTUCKY

Comm. Parts & Service, Inc.
Louisville 502-367-1788

LOUISIANA

Chandlers Parts & Service
Baton Rouge 225-272-6620

LOUISIANA (Continued)

Bana Comm. Parts, Inc.
Shreveport 318-631-6550

MARYLAND

Electric Motor Service
Baltimore 410-467-8080
GCS Service, Inc.
Silver Spring 301-585-7550

MASSACHUSETTS

Ace Service Co., Inc.
Needham 781-449-4220

MICHIGAN

Commercial Kitchen Service
Bay City 517-893-4561
Bildons Appliance Service
Detroit 248-478-3320
Midwest Food Equip. Service
Grandville 616-261-2000

MINNESOTA

GCS Service
Minneapolis 612-546-4221

MISSOURI

GCS Service, Inc.
Kansas City 816-920-5999
Commercial Kitchen Services
St. Louis 314-890-0700
Kaemmerlen Parts & Service
St. Louis 314-535-2222

NEBRASKA

Anderson Electric
Omaha 402-341-1414

NEVADA

Burney's Commercial
Las Vegas 702-736-0006

NEW JERSEY

Jay Hill Repair
Fairfield 973-575-9145
Service Plus
Flanders 973-691-6300

NEW YORK

Acme American Repairs, Inc.
Brooklyn 718-456-6544
Alpro Service Co.
Brooklyn 718-386-2515
Appliance Installation
Buffalo 716-884-7425
Northern Parts Dist.
Plattsburgh 518-563-3200
J. B. Brady, Inc.
Syracuse 315-422-9271

NORTH CAROLINA

Authorized Appliance
Charlotte 704-377-4501

OHIO

Akron/Canton Comm. Svc. Inc.
Akron 330-753-6635
Certified Service Center
Cincinnati 513-772-6600
GCS Service
Columbus 614-476-3225
Electrical Appl. Repair Service
Independence 216-459-8700

OHIO (Continued)

E. A. Wichman Co.
Toledo 419-385-9121

OKLAHOMA

Hagar Rest. Service, Inc.
Oklahoma City 405-235-2184
Krueger, Inc.
Oklahoma City 405-528-8883

OREGON

Bressie Electric Co.
Portland 503-231-7171
Ron's Service, Inc.
Portland 503-624-0890

PENNSYLVANIA

Authorized Factory Service
Coraopolis 412-262-2330
FAST Comm. Appl. Service
Philadelphia 215-288-4800
GCS Service, Inc.
Pittsburgh 412-787-1970
K & D Service Co.
Harrisburg 717-236-9039
Elmer Schultz Services
Philadelphia 215-627-5401
Electric Repair Co.
Reading 610-376-5444

RHODE ISLAND

Marshall Electric Co.
Providence 401-331-1163

SOUTH CAROLINA

Whaley Foodservice Repair
W. Columbia 803-791-4420

TENNESSEE

Camp Electric
Memphis 901-527-7543

TEXAS

City Kitchen Service Co.
Austin 512-719-4445
Stove Parts Supply
Fort Worth 817-831-0381
Armstrong Repair Service
Houston 713-666-7100
Commercial Kitchen Repair Co.
San Antonio 210-735-2811
San Antonio Rest. Equip.
San Antonio 210-824-3271

UTAH

Peterson's Commercial Parts & Svc.
Salt Lake City 801-487-3653

VIRGINIA

Daubers
Norfolk 757-855-4097
Daubers
Springfield 703-866-3600

WASHINGTON

Restaurant Appl. Service
Seattle 206-524-8200

WISCONSIN

A.S.C., Inc.
Madison 608-246-3160
A.S.C., Inc.
Milwaukee 414-543-6460

HATCO CORPORATION

P.O. Box 340500, Milwaukee, WI 53234-0500 U.S.A.

(800) 558-0607 (414) 671-6350

Parts & Service Fax (800) 690-2966 Int'l. Fax (414) 671-3976

www.hatcocorp.com