



Genuine Hatco  
Replacement Parts Price List  
**Canadian Dollar**



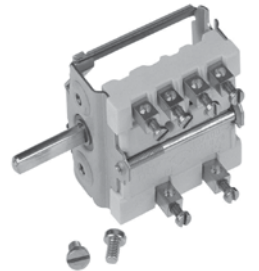
**January, 2012**



page 6



page 15

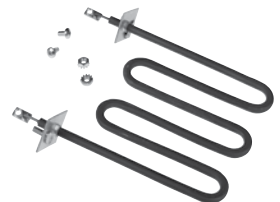


page 15

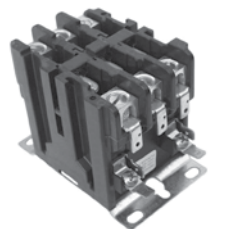


page 39

page 39



page 8



page 28



**GENERAL  
INFORMATION**

**ORDERING PROCEDURES:** To ensure prompt and accurate processing of your order, please specify model with wattage and voltage or part number.

**WARRANTY:** Hatco OEM replacement parts warranty is 90 days. **Return defective parts to:**  
**Hatco Corporation**  
**Attn: Quality Control Team**  
**1118 South Neenah Avenue**  
**Sturgeon Bay, WI 54235 U.S.A.**

**PRICE POLICY:** Replacement parts are at suggested list price, F.O.B. Sturgeon Bay, WI. Prices supersede all previously published prices, *subject to change without notice.*

**TERMS OF SALE:** 1% 10, net 30 days. F.O.B. factory.  
Orders under \$100.00 Net or orders requested to be shipped Next Day, Second Day or Third Day, are subject to a \$10.00 handling charge.

**BUSINESS HOURS:**  
Monday-Friday: 8 am to 5 pm Central Standard Time  
(Summer Hours: June to September)

Product parts lists, installation information and other literature available upon request, or on our web site at:

**www.hatcocorp.com**  
**E-Mail: partsandservice@hatcocorp.com**

**ADDRESS:**  
**Hatco Corporation**  
**P.O. Box 340500**  
**Milwaukee, WI 53234-0500 U.S.A.**

**TELEPHONE: (414) 671-6350**  
**(800) 558-0607**  
**FAX ORDERS TO: (800) 690-2966**  
**EXPORT FAX NO: (414) 671-3976**

NO REPRODUCTION OF THIS MATERIAL  
WITHOUT PRIOR CONSENT FROM HATCO  
CORPORATION.

***Nothing less than the best.™***

**Table of Contents**

**“I” before the part number identifies a special heating element assembly for Infra-Black Foodwarmers. Page 1-2**

**“R” before part number identifies that the item includes additional parts, i.e., – a water heating element with gasket and terminal screw. Pages 2-21**

**“X” Series part numbers. Pages 21-27**

If you have any questions or need a price on an item not listed, please call the Hatco Parts Department at 1-800-558-0607 or fax us at 1-800-690-2966.

<b>Part Number</b>	<b>Description</b>	<b>Page No.</b>
01.XX.XXX.XX	Tanks-Boosters, 3CS, FR .....	5, 28
02.01.XXX.XX	Relays, Contactors, Controllers .....	5, 28
02.03.XXX.XX	Fuses.....	5, 30
02.04.XXX.XX	Booster Heating Elements .....	6
02.05.XXX.XX	Foil Backed & Blanket Style Elements.....	30
02.06.XXX.XX	3CS/FR Heating Elements.....	7
02.07.XXX.XX	Ceramic Heating Elements .....	8, 33
02.08.XXX.XX	Glo-Ray Heating Elements.....	8
02.08.XXX.XX	Heated Well Elements .....	34
02.09.XXX.XX	Toaster Heating Elements.....	12, 34
02.11.XXX.XX	Booster Element Gaskets.....	35
02.12.XXX.XX	Motors & Fans.....	14, 35
02.13.XXX.XX	Rheostat Controls .....	14
02.15.XXX.XX	Terminal Blocks .....	14, 35
02.16.XXX.XX	Thermostats, Hi-Limits, Temp. Displays.....	14, 35
02.17.XXX.XX	Transformers .....	15, 36
02.18.XXX.XX	Wire, Cordsets .....	15, 36
02.19.XXX.XX	Switches, Receptacles.....	15, 37
02.19.XXX.XX	Indicator Lamps.....	37
02.20.XXX.XX	Snap Plugs, Wire Nuts, Cord Grips ...	38
02.21.XXX.XX	Gas Booster-Electrical Parts.....	15, 39
02.30.XXX.XX	Light Bulbs, Light Sockets .....	39
02.40.XXX.XX	Diodes, Booster Probe .....	40
02.41.XXX.XX	Fuse Blocks – Booster.....	40
03.01.XXX.XX	Gauges.....	40
03.02.XXX.XX	Valves.....	40
03.05.XXX.XX	Plumbing Fittings, Pumps .....	15, 40
03.12.XXX.XX	Gas Orifices, Burners .....	15, 40
03.30.XXX.XX	Pipe.....	40
03.40.XXX.XX	Fittings, Valves, Tubing .....	16, 40
04.XX.XXX.XX	Sheet Metal Parts, Display Racks, Breath Protectors .....	16, 40
04.40.XXX.XX	Glass.....	20, 46
05.01.XXX.XX	Lubricants.....	47
05.02.XXX.XX	Bearings.....	47
05.03.XXX.XX	Chains.....	21, 47
05.04.XXX.XX	Fasteners-Screws, Nuts, Bolts, etc....	47
05.06.XXX.XX	Gasketing, Rubber Materials .....	48
05.07.XXX.XX	Toaster Conveyor Shafts .....	49
05.08.XXX.XX	Spring Pins .....	49
05.09.XXX.XX	Sprockets .....	21, 49
05.11.XXX.XX	Washers, Lock Washers .....	49
05.30.XXX.XX	Knobs, Legs, Magnets .....	49
07.01.XXX.XX	Indicator Plates.....	50



Replacement Parts Price List in Canadian Dollars

January 1, 2012

Item	Description	Unit of Measure	List Price
AS.12.004.00	GRCW-1 SIDE DOOR ASSEMBLY	EA	72.40
AS.12.005.00	GRCW-1 REAR DOOR ASSEMBLY	EA	53.90
AS.141.00	PMG-100,200 HEAT TRAP ASSY	EA	32.90
AS.661.00	GRSD DIODE ASSEMBLY	EA	55.80
I6110012045.625	GRAIH-48 120V 1100W ELEM ASSY	EA	152.60
I6110020845.625	GRAIH-48 208V 1100W ELEM ASSY	EA	152.60
I6110022045.625	GRAIH-48 220V 1100W ELEM ASSY	EA	152.60
I6110024045.625	GRAIH-48 240V 1100W ELEM ASSY	EA	152.60
I6125012051.625	GRAIH-54 120V 1250W ELEM ASSY	EA	167.10
I6125020851.625	GRAIH-54 208V 1250W ELEM ASSY	EA	167.10
I6125024051.625	GRAIH-54 240V 1250W ELEM ASSY	EA	167.10
I6140012057.625	GRAIH-60 120V 1400W ELEM ASSY	EA	197.40
I6140020857.625	GRAIH-60 208V 1400W ELEM ASSY	EA	197.40
I6140022057.625	GRAIH-60 220V 1400W ELEM ASSY	EA	193.70
I6140024057.625	GRAIH-60 240V 1400W ELEM ASSY	EA	197.40
I6156012063.625	GRAIH-66 120V 1560W ELEM ASSY	EA	221.10
I6156020863.625	GRAIH-66 208V 1560W ELEM ASSY	EA	221.10
I6156022063.625	GRAIH-66 220V 1560W ELEM ASSY	EA	216.80
I6156024063.625	GRAIH-66 240V 1560W ELEM ASSY	EA	221.10
I616512015.625	GRAI-18D 120 165W ELEM ASSY	EA	75.80
I6172512069.625	GRAIH-72 120V 1725W ELEM ASSY	EA	228.90
I6172520869.625	GRAIH-72 208V 1725W ELEM ASSY	EA	228.90
I6172524069.625	GRAIH-72 240V 1725W ELEM ASSY	EA	228.90
I625012015.625	GRAI-18D 120V 250W ELEM ASSY	EA	75.80
I631524037.750	GRAI-41 240V 315W ELEMENT ASSY	EA	136.80
I631524040.125	GRAI-84T 240V 315W ELE ASSY	EA	134.70
I635012015.625	GRAIH-18 120V 350W ELEM ASSY	EA	76.30
I635012026.125	GRAI-28D 120V 350W ELEM ASSY	EA	88.20
I635020815.625	GRAIH-18 208V 350W ELEM ASSY	EA	76.30
I635022015.625	GRAIH-18 220V 350W ELEM ASSY	EA	75.80
I635024015.625	GRAIH-18 240V 350W ELEM ASSY	EA	76.30
I640024048.750	GRAI-52 240V 400W ELEMENT ASSY	EA	165.30
I645012026.125	GRAI-28D 120V 450W ELEM ASSY	EA	88.20
I645012038.625	KIT, GRAI-41 120V 450W ELEM ASSY	EA	134.70
I650012021.625	GRAIH-24 120V 500W ELEM ASSY	EA	90.80
I650020821.625	GRAIH-24 208V 500W ELEM ASSY	EA	90.80
I650024021.625	GRAIH-24 240V 500W ELEM ASSY	EA	90.80
I652520852.06	GRAIL-54.5T 208V 525W ELEM ASSY	EA	165.30
I652524052.06	GRAIL-54 240V 525W ELEM-(TB)	EA	163.00
I655012038.625	KIT, GRAI-41 120V 550W ELEM ASSY	EA	134.70
I666012027.625	GRAIH-30 120V 660W ELEM ASSY	EA	105.30
I666020827.625	GRAIH-30 208V 660W ELEM ASSY	EA	105.30
I666022027.625	GRAIH-30 220V 660W ELEM ASSY	EA	103.20
I666024027.625	GRAIH-30 240V 660W ELEM ASSY	EA	105.30
I667520840.125	GRAI-84T 208V 675W ELE ASSY	EA	134.70
I667520841.810	GRAI-44 208V 675W ELE ASSY	EA	134.70
I680012033.625	GRAIH-36 120V 800W ELEM ASSY	EA	121.10
I680020833.625	GRAIH-36 208V 800W ELEM ASSY	EA	121.10
I680020845.625	GRAI-48 208V 800W ELEMENT ASSY	EA	146.30
I680024033.625	GRAIH-36 240V 800W ELEM ASSY	EA	121.10



Replacement Parts Price List in Canadian Dollars

January 1, 2012

Item	Description	Unit of Measure	List Price
I680024045.375	GRAI-48 240V 800W-TACO BELL	EA	146.30
I680024045.625	GRAI-48 240V 800W ELEM ASSY	EA	150.00
I695012039.625	GRAIH-42 120V 950W ELEM ASSY	EA	136.80
I695020839.625	GRAIH-42 208V 950W ELEM ASSY	EA	136.80
I695022039.625	GRAIH-42 220V 950W ELE ASSY	EA	134.70
I695024039.625	GRAIH-42 240V 950W ELEM ASSY	EA	136.80
I9110020845.375	KIT,GRAIW-48 208V 1100W ELEM	EA	147.00
I9120020841.810	KIT,GRAIWHL-44,208V,1200W ELE	EA	180.00
I9125020851.370	GRAIWH-54 208V 1250W ELEM ASSY	EA	210.50
I9140012045.625	KIT,GRAIWHL-48 120V 1400W ELEM	EA	182.90
I9140020845.500	GRAIWHL-96 208V 1400W ELE ASSY	EA	144.70
I9140020856.590	KIT,GRSDSI-60T,208V,1400W,ELEM	EA	264.50
I9156020863.375	GRAIWH-66 208V 1560W ELEM ASSY	EA	278.90
I9172520869.625	GRAIWH-72 208V 1725W ELEM ASSY	EA	284.20
I9180020856.590	KIT,GRSDSI-60T,208V,1800W,ELEM	EA	264.50
I9180020857.375	KIT,GRAIW-60 208V 1800W ELEM	EA	264.50
I9192020863.56	KIT,GRAIW-66 208V 1920W ELEM	EA	284.20
I9220020869.375	KIT,GRAIW-72 208V 2200W ELEM	EA	303.90
I9260020881.625	GRAIWH-84 208V 2600W ELE ASSY	EA	296.80
I980024038.00	GRIBW-4220D 240V 800W ELE ASSY	EA	134.70
R00.01.0001.00	KIT,OUTER DOOR GRHD-2P	EA	118.90
R00.01.0002.00	KIT,INNER DOOR GRHD-2P	EA	118.90
R00.01.0003.00	KIT,OUTER DOOR GRHD-3P	EA	134.70
R00.01.0004.00	KIT,INNER DOOR GRHD-3P	EA	134.70
R00.01.0005.00	KIT,OUTER DOOR GRHD-4P	EA	151.60
R00.01.0006.00	KIT,INNER DOOR GRHD-4P	EA	151.60
R00.01.0007.00	KIT,OUTER DOOR GRHD-2PD	EA	108.40
R00.01.0008.00	KIT,INNER DOOR GRHD-2PD	EA	108.40
R00.01.0009.00	KIT,OUTER DOOR GRHD-3PD	EA	118.90
R00.01.0010.00	KIT,INNER DOOR GRHD-3PD	EA	118.90
R00.01.0011.00	KIT,OUTER DOOR GRHD-4PD	EA	135.80
R00.01.0012.00	KIT,INNER DOOR GRHD-4PD	EA	135.80
R00.01.0013.00	KIT,OUTER MIRROR DOOR GRHD-2P	EA	161.80
R00.01.0014.00	KIT,INNER MIRROR DOOR GRHD-2P	EA	161.80
R00.01.0015.00	KIT,OUTER MIRROR DOOR GRHD-3P	EA	175.00
R00.01.0016.00	KIT,INNER MIRROR DOOR GRHD-3P	EA	175.00
R00.01.0017.00	KIT,OUTER MIRROR DOOR GRHD-4P	EA	194.70
R00.01.0018.00	KIT,INNER MIRROR DOOR GRHD-4P	EA	194.70
R00.01.0019.00	KIT,OUTER MIRROR DOOR GRHD-2PD	EA	150.00
R00.01.0020.00	KIT,INNER MIRROR DOOR GRHD-2PD	EA	150.00
R00.01.0021.00	KIT,OUTER MIRROR DOOR GRHD-3PD	EA	160.50
R00.01.0022.00	KIT,INNER MIRROR DOOR GRHD-3PD	EA	160.50
R00.01.0023.00	KIT,OUTER MIRROR DOOR GRHD-4PD	EA	176.30
R00.01.0024.00	KIT,INNER MIRROR DOOR GRHD-4PD	EA	176.30
R00.01.0025.00	KIT,OUTER DOOR GRCD&GRCDH-2P	EA	121.10
R00.01.0026.00	KIT,INNER DOOR GRCD&GRCDH-2P	EA	121.10
R00.01.0027.00	KIT,OUTER DOOR GRCD&GRCDH-3P	EA	134.20
R00.01.0028.00	KIT,INNER DOOR GRCD&GRCDH-3P	EA	134.20
R00.01.0029.00	KIT,OUTER DOOR GRCD&GRCDH-2PD	EA	114.50
R00.01.0030.00	KIT,INNER DOOR,GRCD&GRCDH-2PD	EA	114.50



Replacement Parts Price List in Canadian Dollars

January 1, 2012

Item	Description	Unit of Measure	List Price
R00.01.0031.00	KIT, OUTER DOOR, GRCD&GRCDH-3PD	EA	130.30
R00.01.0032.00	KIT, INNER DOOR, GRCD&GRCDH-3PD	EA	130.30
R00.01.0033.00	KIT, OUTER MIRROR DOOR-CD-2P	EA	153.70
R00.01.0034.00	KIT, INNER MIRROR DOOR-CD-2P	EA	153.70
R00.01.0035.00	KIT, OUTER MIRROR DOOR-CD-3P	EA	166.30
R00.01.0036.00	KIT, INNER MIRROR DOOR-CD-3P	EA	166.30
R00.01.0037.00	KIT, OUTER MIRROR DOOR-CD-2PD	EA	147.40
R00.01.0038.00	KIT, INNER MIRROR DOOR-CD-2PD	EA	147.40
R00.01.0039.00	KIT, INNER MIRROR DOOR-CD-3PD	EA	160.00
R00.01.0040.00	KIT, OUTER MIRROR DOOR-CD-3PD	EA	160.00
R00.01.0041.00	KIT, SLIDING INNER (LH) DOOR	EA	377.60
R00.01.0042.00	KIT, SLIDING OUTER (R.H.) DOOR	EA	377.60
R00.01.0101.00	KIT, GLASS DOOR, FST	EA	413.20
R00.01.0102.00	KIT, GLASS DOOR, FSHC	EA	413.20
R00.01.0103.00	KIT, DOOR GASKET-FS	EA	44.70
R00.01.0104.00	KIT, DOOR GASKET-FST	EA	44.70
R00.01.0105.00	KIT, DOOR GASKET-FSHC	EA	44.70
R00.01.0107.00	KIT, S.S. DOOR FSHC	EA	503.90
R00.01.0108.00	KIT, L.H. DOOR, FST-CR, WFST	EA	460.50
R00.01.0109.00	KIT, R.H. DOOR, WFST-CR	EA	460.50
R00.01.0110.00	KIT, HINGE-PIN, FS	EA	34.20
R00.01.0111.00	KIT, UPPER GLASS DOOR FST 1 MN	EA	153.00
R00.01.0112.00	KIT, LOWER GLASS DOOR, FST 1 MN	EA	153.00
R00.01.0113.00	KIT, BLACK L.H. DOOR-WFST	EA	501.10
R00.01.0114.00	KIT, BLACK R.H. DOOR-WFST	EA	501.10
R00.01.0115.00	KIT, HINGES W/HDW-"STYLE A"	EA	34.20
R00.01.0116.00	KIT, FSD REVERSIBLE DOOR HDW	EA	67.10
R00.01.0117.00	KIT, GLASS DOOR, PFST	EA	438.20
R00.01.0118.00	KIT, DOOR GASKET FOR PFST	EA	59.20
R00.01.0121.00	KIT, HINGES W/HDW-FSD"STYLE B"	EA	23.20
R00.01.0122.00	KIT, DOOR GASKET-WFST/AFST	EA	44.70
R00.01.0123.00	KIT, GLASS DOOR, FSHC-7 W/HDW	EA	389.50
R00.01.0124.00	KIT, DOOR GASKET-FSHC-7 SERIES	EA	44.20
R00.01.0125.00	KIT, S.S. DOOR, FSHC-7 W/HDW	EA	470.50
R00.01.0126.00	KIT, GLASS DOOR, FSHC-6W W/HDW	EA	434.70
R00.01.0127.00	KIT, DOOR GASKET-FSHC-6W SERIES	EA	44.20
R00.01.0128.00	KIT, S.S. DOOR, FSHC-6W W/HDW	EA	457.90
R00.01.0129.00	KIT, S.S. VENTED DOOR, PH-7 W/HDW	EA	471.60
R00.01.0130.00	KIT, DOOR ASSY HD SS VENT-HC-7	EA	594.70
R00.01.0131.00	KIT, DOOR ASSY HD SS HC-7, NO VT	EA	489.50
R00.01.0132.00	KIT, DOOR ASSY HD GLASS HC-7	EA	489.50
R00.01.0133.00	KIT, DOOR HINGES&HDW, FSHC-6/7	EA	53.70
R00.01.0134.00	KIT, DOOR GASKET-FDWD SERIES	EA	11.00
R00.01.0135.00	KIT, DOOR GASKET-FSD&T SERIES	EA	12.00
R00.01.0137.00	KIT, DOOR ASSY HD SS FSHC-6W	EA	484.00
R00.02.0004.00	KIT, LPG CONVERSION, PMG-60	EA	70.50
R00.02.0005.00	KIT, LPG CONVERSION PMG 100&200	EA	75.00
R00.02.0018.00	KIT, RELAY RETROFIT-700H200&208	EA	56.60
R00.02.0019.00	KIT, RELAY RETROFIT-700H240V	EA	56.60
R00.02.0020.00	KIT, RELAY RETROFIT-700H220V	EA	56.60



Replacement Parts Price List in Canadian Dollars

January 1, 2012

Item	Description	Unit of Measure	List Price
R00.02.0021.00	KIT,RELAY RETROFIT-FR5 208V	EA	56.60
R00.02.0022.00	KIT,RELAY RETROFIT-FR5 240V	EA	56.60
R00.02.0026.00	KIT,RELAY-RETRO-SDS/HD/CD 220V	EA	56.60
R00.02.0027.00	KIT,RELAY-RETRO-SDS/HD/CD 240V	EA	56.60
R00.02.0028.00	KIT,ROCKER SW-GRFHS&LEADS 125V	EA	23.20
R00.02.0029.00	KIT,ROCKER SW-GRFHS&LEADS 250V	EA	32.90
R00.02.0030.00	KIT,GRFHS TOGGLE SW.RETRO-FIT	EA	81.60
R00.02.0044.00	KIT,BLOWER FAN RETRO-HDW-2MN	EA	115.80
R00.02.0046.00	KIT,BLANKING FLANGE,ABB SERIES	EA	26.30
R00.02.0047.00	KIT,AUTO-FILL SENSOR,HWBI	EA	28.40
R00.03.0001.00	KIT,TAIL PIECE EXTENSION	EA	131.60
R00.03.0004.00	KIT,SPRAY MANIFOLD ASSY-HQT	EA	43.20
R00.03.0005.00	KIT,INLET MANIFOLD ASSY-HQT	EA	69.50
R00.04.0001.00	KIT,FRC-LEGS/HOUSING ASSY.	EA	980.30
R00.04.0003.00	KIT,HDW DRAWER ASSEMBLY	EA	423.70
R00.04.0004.00	KIT,BICSUIT DRAWER ASSEMBLY	EA	443.40
R00.04.0005.00	KIT,OVERSIZE DRAWER ASSEMBLY	EA	443.40
R00.04.0017.00	KIT,HDW-XN DRAWER ASSEMBLY	EA	423.70
R00.04.0019.00	KIT,DOOR-2SDS24-SINGLE/TOPDUAL	EA	145.00
R00.04.0020.00	KIT,DOOR-2SDS30-SINGLE/TOPDUAL	EA	168.00
R00.04.0021.00	KIT,DOOR-2SDS36-SINGLE/TOPDUAL	EA	190.50
R00.04.0022.00	KIT,DOOR-2SDS42-SINGLE/TOPDUAL	EA	216.80
R00.04.0023.00	KIT,DOOR-2SDS48-SINGLE/TOPDUAL	EA	251.00
R00.04.0024.00	KIT,DOOR-2SDS54-SINGLE/TOPDUAL	EA	294.00
R00.04.0025.00	KIT,DOOR-2SDS60-SINGLE/TOPDUAL	EA	336.00
R00.04.0026.00	KIT,DOOR-2SDS24-CENTER&BOTTOM	EA	145.00
R00.04.0027.00	KIT,DOOR-2SDS30-CENTER&BOTTOM	EA	168.00
R00.04.0028.00	KIT,DOOR-2SDS36-CENTER&BOTTOM	EA	190.50
R00.04.0029.00	KIT,DOOR-2SDS42-CENTER&BOTTOM	EA	216.80
R00.04.0030.00	KIT,DOOR-2SDS48-CENTER&BOTTOM	EA	251.00
R00.04.0031.00	KIT,DOOR-2SDS54-CENTER&BOTTOM	EA	294.00
R00.04.0032.00	KIT,DOOR-2SDS60-CENTER&BOTTOM	EA	336.00
R00.04.0043.00	KIT,FLIP-UP BACK-3SDS-39-QUIK	EA	171.60
R00.04.0045.00	KIT,FLIP-UP FRONT DOOR 3SDS-39	EA	171.60
R00.04.0046.01	KIT,MDW DOOR ASSY W/HDW-BLACK	EA	89.00
R00.04.0046.02	KIT,MDW DOOR ASSY W/HDW-GRAY	EA	89.00
R00.04.0046.03	KIT,MDW DOOR ASSY W/HDW-RED	EA	89.00
R00.04.0046.04	KIT,MDW DOOR ASSY W/HDW-WHITE	EA	89.00
R00.04.0046.05	KIT,MDW DOOR ASSY W/HDW-BLUE	EA	89.00
R00.04.0046.07	KIT,MDM DOOR ASSY W/HDW-GREEN	EA	89.00
R00.04.0049.00	KIT,FLIP-UP FRONT DOOR 3SDS-27	EA	120.00
R00.04.0050.00	KIT,FLIP-UP BACK DOOR 3SDS-27	EA	120.00
R00.04.0051.00	KIT,FLIP-UP FRONT DOOR 3SDS-33	EA	148.40
R00.04.0052.00	KIT,FLIP-UP BACK DOOR 3SDS-33	EA	148.40
R00.04.0053.00	KIT,FLIP-UP DOOR 3SDH-27	EA	120.00
R00.04.0054.00	KIT,FLIP-UP DOOR 3SDH-33	EA	148.40
R00.04.0055.00	KIT,FLIP-UP DOOR 3SDH-39	EA	171.60
R00.04.0059.00	KIT,FLIP-UP BACK DOOR 3SDS-39	EA	171.60
R00.04.0060.00	KIT,S.S.DOOR ASSY.R.H.FSHC-8	EA	471.60
R00.04.0061.00	KIT,S.S.DOOR ASSY.L.H.FSHC-8	EA	471.60



Replacement Parts Price List in Canadian Dollars

January 1, 2012

Item	Description	Unit of Measure	List Price
R00.04.0064.00	KIT,DOOR-2SDS30-SINGLE/TOPDUAL	EA	168.00
R00.04.0071.00	KIT,DOOR-2SDS30-CENTYER&BOTTOM	EA	168.00
R00.04.0081.00	KIT,HDW-2R2N DRAWER ASSEMBLY	EA	381.00
R00.04.0082.01	KIT,DOOR,FRONT,UP,BLK,BP,2CMWD	EA	551.00
R00.05.0002.00	KIT,STRAINER GASKETS 3CS/FR	EA	15.00
R00.05.0029.00	KIT,SWING POST KFC FRY CENTER	EA	51.30
R00.05.0101.00	KIT,DOOR HINGE W/HARDWARE	EA	35.80
R00.16.135BC.00	KIT,THERMOSTAT W/BENT BULB	EA	111.00
R01.02.002.00	KIT,TANK,SM CM,2 ELEMENT HOLES	EA	790.00
R01.02.003.00	KIT,TANK,SM CM,3 ELEMENT HOLES	EA	815.00
R01.02.007S.00	KIT,TANK,IMP,3 ELEMENT HOLES	EA	1,024.00
R01.02.008S.00	KIT,TANK,IMP,6 ELEMENT HOLES	EA	1,113.00
R01.02.009S.00	KIT,TANK,IMP,9 ELEMENT HOLES	EA	1,640.80
R01.02.031.00	KIT,TANK,LG CM,6 ELEMENT HOLES	EA	890.00
R01.04.001.00	KIT,TANK 3CS,1 ELEMENT HOLE	EA	282.00
R01.04.002.00	KIT,TANK,3CS,2 ELEMENT HOLES	EA	341.00
R01.04.006.00	KIT,TANK,3CS,3 ELEMENT HOLES	EA	388.00
R01.04.008.00	KIT,TANK,FR-5,2 ELE HOLES	EA	404.00
R01.04.017.00	KIT,2 ELEMENT 3CS TANK	EA	359.90
R01.04.018.00	KIT,TANK,FR,3 ELE HOLES &LWCO	EA	388.40
R01.05.001.00	KIT,TANK,S/S MINI CM,3 ELE	EA	656.00
R02.01.025.00	KIT,RELAY,25A,SPDT	EA	56.60
R02.01.029.00	KIT,FLOAT SWITCH WITH HARDWARE	EA	88.20
R02.01.050.00	KIT,RELAY MINI 30A,SPST,24V DC	EA	27.60
R02.01.074.00	KIT,T-STAT PROBE 36"x7"SS CAP	EA	90.80
R02.01.101.00	KIT,ELECTRONIC INF.SWITCH 120V	EA	139.50
R02.01.102.00	KIT,ELEC.INF.SW.240V-GLO-RAY.	EA	139.50
R02.01.165R.00	KIT,ELEC.CONTROLLER	EA	326.30
R02.01.189.00	KIT,T-STAT&PORT,WATER HTR,24V	EA	248.80
R02.01.210.00	KIT,LWCO BOARD 120/240V W/DLAY	EA	114.50
R02.01.212.00	KIT,LWCO BOARD 24V W/DELAY	EA	114.50
R02.01.229.00	KIT,TOASTER CONTROL BOARD W/HL	EA	413.20
R02.01.235.00	KIT,LWCO BOARD 230 VOLT "CE"	EA	158.00
R02.01.244.00	KIT,CONTROL/DISPLAY ASSY-FLOM	EA	409.50
R02.01.253.00	KIT,TIMER BOARD-GRMW SERIES	EA	415.80
R02.01.259.00	KIT,T-STAT CONT,24VDC,W/BEZEL	EA	167.40
R02.01.294.00	KIT,INF.S.S.208-240V,0-100%	EA	154.70
R02.01.297.00	KIT,INF.S.S.120V,0-100%	EA	154.70
R02.03.001.02	KIT,FUSE 1A AGC-2 PACK	EA	2.60
R02.03.005A.02	KIT,FUSE 1A 600V-2 PACK	EA	26.30
R02.03.010.02	KIT,FUSE 35A 600V-2 PACK	EA	39.50
R02.03.011.02	KIT,FUSE 40A 600V-2 PACK	EA	39.50
R02.03.012.02	KIT,FUSE 50A 600V-2 PACK	EA	39.50
R02.03.013.02	KIT,FUSE 1A 600V-2 PACK	EA	26.30
R02.03.014.02	KIT,FUSE 2A 480V-2 PACK	EA	10.50
R02.03.015.02	KIT,FUSE 60A 600V-2 PACK	EA	39.50
R02.03.021.02	KIT,FUSE 1A 600V-2 PACK	EA	51.30
R02.03.030.02	KIT,FUSE 35A 300V-2 PACK	EA	31.60
R02.03.031.02	KIT,FUSE 40A 300V-2 PACK	EA	31.60
R02.03.032.02	KIT,FUSE 50A 300V-2 PACK	EA	31.60



Replacement Parts Price List in Canadian Dollars

January 1, 2012

Item	Description	Unit of Measure	List Price
R02.03.033.02	KIT,FUSE 60A 300V-2 PACK	EA	31.60
R02.03.052.02	KIT,FUSE 15 AMP-TQ-1200-2 PACK	EA	27.60
R02.04.100.00	KIT,ELE 3200W,200V	EA	53.90
R02.04.101.00	KIT,ELE 3300W 208V	EA	53.90
R02.04.102.00	KIT,ELE 3800W,240V	EA	53.90
R02.04.103.00	KIT,ELE 3800W,277V	EA	53.90
R02.04.104.00	KIT,ELE 3200W,220V	EA	53.90
R02.04.105.00	KIT,ELE 3800W,346V	EA	53.90
R02.04.106.00	KIT,ELE,1900W,120V	EA	53.90
R02.04.150.00	KIT,ELEMENT 13500W 208/240V	EA	187.40
R02.04.151.00	KIT,ELEMENT 13500W 380V	EA	187.40
R02.04.152.00	KIT,ELEMENT 13500W 480V	EA	187.40
R02.04.302.00	KIT,ELE,3000W,208V,9 13/16"	EA	34.20
R02.04.303.00	KIT,ELE,3000W,240V,9 13/16"	EA	34.20
R02.04.304.00	KIT,ELE,3000W,346V,9 13/16"	EA	34.20
R02.04.305.00	KIT,ELE,3000W,480V,9 13/16"	EA	34.20
R02.04.306.00	KIT,ELE,3000W,277V,9 13/16"	EA	34.20
R02.04.350.00	KIT,ELE,3500W,208V, 9 13/16"	EA	34.20
R02.04.351.00	KIT,ELE,3500W,240V, 9 13/16"	EA	34.20
R02.04.352.00	KIT,ELE,3500W,480V,9 13/16"	EA	34.20
R02.04.353.00	KIT,ELE,3500W,346V, 9 13/16"	EA	34.20
R02.04.354.00	KIT,ELE,3500W,277V,9 13/16"	EA	34.20
R02.04.400.00	KIT,ELE,4000W,208V,11 1/2"	EA	35.80
R02.04.401.00	KIT,ELE,4000W,240V,11 1/2"	EA	35.80
R02.04.402.00	KIT,ELE,4000W,346V,11 1/2"	EA	35.80
R02.04.404.00	KIT,ELE,4000W,480V,11 1/2"	EA	35.80
R02.04.405.00	KIT,ELE,4000W,277V,11 1/2"	EA	35.80
R02.04.450.00	KIT,ELE,4500W,208V,11 1/2"	EA	35.80
R02.04.451.00	KIT,ELE,4500W,240V,11 1/2"	EA	35.80
R02.04.452.00	KIT,ELE,4500W,346V,11 1/2"	EA	35.80
R02.04.453.00	KIT,ELE,4500W,480V,11 1/2"	EA	35.80
R02.04.454.00	KIT,ELE,4500W,277V,11 1/2"	EA	35.80
R02.04.500.00	KIT,ELE,5000W,208V,11.5"	EA	38.20
R02.04.501.00	KIT,ELE,5000W,240V,11 1/2"	EA	38.20
R02.04.502.00	KIT,ELE,5000W,480V,11 1/2"	EA	38.20
R02.04.510.00	KIT,ELE,5000W,346V,11 1/2"	EA	38.20
R02.04.511.00	KIT,ELE,5000W,277V,11 1/2"	EA	38.20
R02.04.600.00	KIT,ELE,5750W,208V,13 5/16"	EA	42.10
R02.04.600A.00	KIT,ELE,6000W,208V,13 5/16"	EA	42.10
R02.04.601.00	KIT,ELE,6000W,220V,13 5/16"	EA	42.10
R02.04.603.00	KIT,ELE,6000W,240V,13 5/16"	EA	42.10
R02.04.604.00	KIT,ELE,6000W,346V,13 5/16"	EA	42.10
R02.04.605.00	KIT,ELE,6000W,480V,13 5/16"	EA	42.10
R02.04.606.00	KIT,ELE,6000W,277V,13 5/16"	EA	42.10
R02.04.610.00	KIT,ELE,6000W,208V,15"	EA	42.10
R02.04.611.00	KIT,ELE,6000W,240V,15"	EA	42.10
R02.04.612.00	KIT,ELE,6000W,346V,15"	EA	42.10
R02.04.613.00	KIT,ELE,6000W,480V,15"	EA	42.10
R02.04.614.00	KIT,ELE,6000W,277V,15"	EA	42.10
R02.04.632.00	KIT,ELE,6333W,240V,13 5/16"	EA	43.20





Replacement Parts Price List in Canadian Dollars

January 1, 2012

Item	Description	Unit of Measure	List Price
R02.04.634.00	KIT,ELE,6333W,480V,13 5/16"	EA	43.20
R02.04.650.00	KIT,ELE,6500W,208V,15"	EA	43.40
R02.04.651.00	KIT,ELE,6500W,220V,15"	EA	43.40
R02.04.653.00	KIT,ELE,6500W,240V,15"	EA	43.40
R02.04.654.00	KIT,ELE,6500W,346V,15"	EA	43.40
R02.04.655.00	KIT,ELE,6500W,480V,15"	EA	43.40
R02.04.656.00	KIT,ELE,6500W,277V,15"	EA	43.40
R02.04.700.00	KIT,ELE,7500W,208V,15 1/4"	EA	109.20
R02.04.701.00	KIT,ELE,7500W,240V,15 1/4"	EA	109.20
R02.04.702.00	KIT,ELE,7500W,277V	EA	109.20
R02.04.703.00	KIT,ELE,7500W,480V,15 1/4"	EA	109.20
R02.04.704.00	KIT,ELE,7500W,346V,15 1/4"	EA	109.20
R02.04.710.00	KIT,ELE,9000W,208V,15 1/4"	EA	115.80
R02.04.711.00	KIT,ELE,9000W,240V,15 1/4"	EA	115.80
R02.04.713.00	KIT,ELE,9000W,480V,15 1/4"	EA	115.80
R02.04.714.00	KIT,ELE,9000W,346V,15 1/4"	EA	115.80
R02.04.715.00	KIT,ELE,9000W,220V,15 1/4"	EA	92.60
R02.04.731.00	KIT,ELE,9500W,208V,15 1/4"	EA	101.10
R02.04.732.00	KIT,ELE,9500W,220V,15 1/4"	EA	101.10
R02.04.733.00	KIT,ELE,9500W,240V,15 1/4"	EA	101.10
R02.04.734.00	KIT,ELE,9500W,346V,15 1/4"	EA	101.10
R02.04.735.00	KIT,ELE,9500W,480V,15 1/4"	EA	106.00
R02.05.002.00	KIT,ELE,120V,600W,(WATER)	EA	64.50
R02.05.003.00	KIT,ELE,600W,230V,(WATER)	EA	64.50
R02.05.005.00	KIT,ELE,250W,240V,AIR CHAMBER	EA	30.30
R02.05.006.00	KIT,ELE,325W,120V,WATER	EA	48.70
R02.05.007.00	KIT,ELE,1050W,120V,AIR	EA	51.30
R02.05.008E.00	KIT,ELE,AIR,1050W,240V,(EXP)	EA	49.50
R02.05.010.00	KIT,ELE,225W,120V,FLEX BLANKET	EA	121.10
R02.05.011.00	KIT,1050W,120V,AIR ELE,FDW/FSD	EA	51.30
R02.05.012E.00	KIT,ELE,1050W,240V,AIR	EA	51.30
R02.05.013.00	KIT,325W,240V,WATER ELEMENT	EA	48.70
R02.05.013E.00	KIT,ELE,325W,240V,WATER	EA	47.40
R02.05.015E.00	KIT,1050WATT,220V,AIR,ELE,FDW	EA	51.30
R02.05.016E.00	KIT,325WATT 220V WATER ELEMENT	EA	48.70
R02.05.017E.00	KIT,ELEMENT,1050W,220V,AIR	EA	49.50
R02.05.018.00	KIT,ELEMENT,WATER,600W,220V	EA	64.50
R02.05.511E.00	KIT,ELE,1050W,100V,AIR	EA	49.50
R02.05.512E.00	KIT,ELE,325W,100V,WATER	EA	47.40
R02.05.623.00	KIT,ELEMENT,200W,120V,MDW	EA	30.50
R02.05.626.00	KIT,ELE,1000W,120V,AIR	EA	49.50
R02.05.702.00	KIT,ELE,1050W,120V,AIR	EA	49.50
R02.06.001F.00	KIT,3000 WATT 240 VOLT ELEMENT	EA	116.80
R02.06.003F.00	KIT,4000/3000W 240/208 ELEMENT	EA	116.80
R02.06.004F.00	KIT,4000 WATT 208V ELEMENT	EA	116.80
R02.06.228.00	KIT,DUAL ELE,1625/750W,208V	EA	92.60
R02.06.229.00	KIT,DUAL ELE,1625/750W,240V	EA	92.60
R02.06.300.00	KIT,ELE,3000W,208V	EA	59.20
R02.06.301.00	KIT,ELE,3000W,240V	EA	59.20
R02.06.302.00	KIT,ELE,3000W,440V	EA	59.20



Replacement Parts Price List in Canadian Dollars

January 1, 2012

Item	Description	Unit of Measure	List Price
R02.06.303.00	KIT,ELEMENT,3000 WATT,480 VOLT	EA	59.20
R02.06.304.00	KIT,ELEMENT,1900 WATT 208 VOLT	EA	59.20
R02.06.350.00	KIT,ELEMENT 4000W,350 VOLT	EA	59.20
R02.06.450.00	KIT,ELE,4500W,208V	EA	59.20
R02.06.451.00	KIT,ELE,4500W,240V	EA	59.20
R02.06.452.00	KIT,ELE,4500W,480V	EA	59.20
R02.06.500.00	KIT,ELEMENT,1625W,208V-AWD	EA	76.30
R02.06.501.00	KIT,ELEMENT,1625W,240V-AWD	EA	75.80
R02.06.603.00	KIT,ELEMENT,2000W,277V	EA	61.80
R02.07.001.00	KIT,ELEMENT,CERAMIC 750W,120V	EA	152.60
R02.07.002.00	KIT,CERAMIC ELE-2PCS-500W-120V	EA	273.70
R02.08.001D.00	KIT,ELE,GR24,350W,120V (.260)	EA	31.60
R02.08.002D.00	KIT,ELE,GR24,350W,208V(.260)	EA	31.60
R02.08.003E.00	KIT,ELE,GR24,350W,240V(.260)	EA	31.60
R02.08.004D.00	KIT,ELE,GR36,575W,120V,(.260)	EA	36.80
R02.08.005D.00	KIT,ELE,GR36,575W,208V,(.260)	EA	36.80
R02.08.006D.00	KIT,ELE,GR36,575W,240V,(.260)	EA	36.80
R02.08.006E.00	KIT,ELE,GR36,575W,240V.26(EXP)	EA	36.80
R02.08.007D.00	KIT,ELE,GR42,675W,120V,(.260)	EA	39.50
R02.08.008D.00	KIT,ELE,GR42,675W,208V,(.260)	EA	39.50
R02.08.009D.00	KIT,ELE,GR42,675W,240V,(.260)	EA	39.50
R02.08.009E.00	KIT,ELE,GR42,675W,240V.26(EXP)	EA	39.50
R02.08.010A.00	KIT,ELEMENT,COILED 800W 120V	EA	53.90
R02.08.010D.00	KIT,ELE,GR48,800W,120V (.260)	EA	43.40
R02.08.011D.00	KIT,ELE,GR48,800W,208V,(.260)	EA	43.40
R02.08.011F.00	KIT,ELEMENT,800W,220V,COILED	EA	52.60
R02.08.012A.00	KIT,ELEMENT,COILED,800W,220V	EA	53.90
R02.08.012D.00	KIT,ELE,GR48,800W,240V,(.260)	EA	43.40
R02.08.012E.00	KIT,ELE,GR48,800W,240V.26(EXP)	EA	43.40
R02.08.013D.00	KIT,ELE,GR60,1050W,120V,(.260)	EA	53.90
R02.08.014D.00	KIT,ELE,GR60,1050W,208V,(.260)	EA	53.90
R02.08.015D.00	KIT,ELE,GR60,1050W,240V,(.260)	EA	53.90
R02.08.015E.00	KIT,ELE,GR60,1050W,240V.26 EXP	EA	53.90
R02.08.016D.00	KIT,ELE,GR72,1275W,120V(.260)	EA	59.20
R02.08.017D.00	KIT,ELE,GR72,1275W,208V,(.260)	EA	59.20
R02.08.018D.00	KIT,ELE,GR72,1275W,240V,(.260)	EA	59.20
R02.08.018E.00	KIT,ELE,GR72,1275W,240V.26 EXP	EA	59.20
R02.08.019D.00	KIT,ELE,GR84,1500W,120V,(.260)	EA	63.20
R02.08.020D.00	KIT,ELE,GR84,1500W,208V,(.260)	EA	63.20
R02.08.021E.00	KIT,ELE,GR84,1500W,240V.26 EXP	EA	63.20
R02.08.022D.00	KIT,ELE,GR96,1725W,120V,(.260)	EA	69.70
R02.08.023D.00	KIT,ELE,GR96,1725W,208V,(.260)	EA	69.70
R02.08.024D.00	KIT,ELE,GR96,1725W,240V,(.260)	EA	69.70
R02.08.024E.00	KIT,ELE,GR96,1725W,240V.26 EXP	EA	69.70
R02.08.025D.00	KIT,ELE,GR54,925W,120V,(.260)	EA	47.40
R02.08.026D.00	KIT,ELE,GR30,450W,120V,(.260)	EA	35.80
R02.08.027D.00	KIT,ELE,GR30,450W,208V,(.260)	EA	35.80
R02.08.028D.00	KIT,ELE,GR30,450W,240V,(.260)	EA	35.80
R02.08.028E.00	KIT,ELE,GR30,450W,240V.26(EXP)	EA	35.80
R02.08.029D.00	KIT,ELE,GR54,925W,208V,(.260)	EA	47.40



Replacement Parts Price List in Canadian Dollars

January 1, 2012

Item	Description	Unit of Measure	List Price
R02.08.030D.00	KIT,ELE,GR54,925W,240V,(.260)	EA	47.40
R02.08.030E.00	KIT,ELE,GR54,925W,240V.26(EXP)	EA	46.30
R02.08.031D.00	KIT,ELE,GR18,250W,120V,(.260)	EA	28.90
R02.08.032D.00	KIT,ELE,GR66,1160W,120V,(.260)	EA	55.30
R02.08.033D.00	KIT,ELE,GR66,1160W,208V,(.260)	EA	55.30
R02.08.034D.00	KIT,ELE,GR66,1160W,240V,(.260)	EA	55.30
R02.08.034E.00	KIT,ELE,GR66,1160W,240V.26 EXP	EA	55.30
R02.08.035D.00	KIT,ELE,GR18,250W,240V,(.260)	EA	28.90
R02.08.035E.00	KIT,ELE,GR18,250W,240V.26 EXP	EA	28.90
R02.08.036D.00	KIT,ELE,GR24,400W,120V,(.260)	EA	34.20
R02.08.037E.00	KIT,ELE,GR18,250W,220V.26(EXP)	EA	28.40
R02.08.039E.00	KIT,ELE,GR42,675W,220V.26(EXP)	EA	38.90
R02.08.040D.00	KIT,ELE,GR18,250W,208V,(.260)	EA	28.90
R02.08.041E.00	KIT,ELE,GR24,350W,220V.26 EXP	EA	31.60
R02.08.042E.00	KIT,ELE,GR30,450W,220V.26(EXP)	EA	35.80
R02.08.043E.00	KIT,ELE,GR36,575W,220V.26(EXP)	EA	36.80
R02.08.045E.00	KIT,ELE,GR48,800W,220V,(.260)	EA	43.40
R02.08.046E.00	KIT,ELE,GR54,925W,220V,(.260)	EA	47.40
R02.08.047E.00	KIT,ELE,GR60,1050W,220V,(.260)	EA	52.60
R02.08.049E.00	KIT,ELE,GR72,1275W,220V(.260)	EA	59.20
R02.08.050E.00	KIT,ELE,GR84,1500W,220V.26 EXP	EA	62.10
R02.08.051E.00	KIT,ELE,GR96,1725W,220V.26 EXP	EA	68.40
R02.08.052D.00	KIT,ELE,GR41,665W,120V,(.260)	EA	42.10
R02.08.053D.00	KIT,ELE,GR52,885W,120V,(.260)	EA	46.30
R02.08.090.00	KIT,ELEMENT,AIR,875W,120V	EA	37.90
R02.08.091.00	KIT,ELEMENT,AIR,600W,120V	EA	37.90
R02.08.092E.00	KIT,ELEMENT,AIR,600W,220V,EXP	EA	37.90
R02.08.093E.00	KIT,ELEMENT,AIR,600W,240V	EA	37.90
R02.08.094E.00	KIT,ELEMENT,AIR,875W,220V,EXP	EA	37.90
R02.08.095E.00	KIT,ELEMENT,AIR,875W,240V	EA	37.90
R02.08.101D.00	KIT,ELE,GR24,500W,120V,(.260)	EA	34.20
R02.08.102D.00	KIT,ELE,GR24,500W,208V,(.260)	EA	34.20
R02.08.103D.00	KIT,ELE,GR24,500W,240V,(.260)	EA	34.20
R02.08.103E.00	KIT,ELE,GR24,500W,240V,(.260)	EA	34.20
R02.08.104D.00	KIT,ELE,GR36,800W,120V,(.260)	EA	38.20
R02.08.105D.00	KIT,ELE,GR36,800W,208V,(.260)	EA	38.20
R02.08.106D.00	KIT,ELE,GR36,800W,240V,(.260)	EA	38.20
R02.08.106E.00	KIT,ELE,GR36,800W,240V.26(EXP)	EA	38.20
R02.08.107D.00	KIT,ELE,GR42,950W,120V,(.260)	EA	42.10
R02.08.108D.00	KIT,ELE,GR42,950W,208V,(.260)	EA	42.10
R02.08.109D.00	KIT,ELE,GR42,950W,240V,(.260)	EA	42.10
R02.08.109E.00	KIT,ELE,GR42,950W,240V.26(EXP)	EA	42.10
R02.08.110D.00	KIT,ELE,GR48,1100W,120V,(.260)	EA	44.70
R02.08.111D.00	KIT,ELE,GR48,1100W,208V,(.260)	EA	44.70
R02.08.112D.00	KIT,ELE,GR48,1100W,240V,(.260)	EA	44.70
R02.08.112E.00	KIT,ELE,GR48,1100W,240V,(.260)	EA	44.70
R02.08.113D.00	KIT,ELE,GR60,1400W,120V,(.260)	EA	55.30
R02.08.114D.00	KIT,ELE,GR60,1400W,208V,(.260)	EA	55.30
R02.08.115D.00	KIT,ELE,GR60,1400W,240V,(.260)	EA	55.30
R02.08.115E.00	KIT,ELE,GR60,1400W,240V,(.260)	EA	55.30



Replacement Parts Price List in Canadian Dollars

January 1, 2012

Item	Description	Unit of Measure	List Price
R02.08.116D.00	KIT,ELE,GR72,1725W,120V,(.260)	EA	60.50
R02.08.117D.00	KIT,ELE,GR72,1725W,208V,(.260)	EA	60.50
R02.08.118D.00	KIT,ELE,GR72,1725W,240V,(.260)	EA	60.50
R02.08.118E.00	KIT,ELE,GR72,1725W,240V,(.260)	EA	60.50
R02.08.120D.00	KIT,ELE,GR84,2050W,208V,(.260)	EA	64.50
R02.08.121D.00	KIT,ELE,GR84,2050W,240V,(.260)	EA	64.50
R02.08.121E.00	KIT,ELE,GR84,2050W,240V.26 EXP	EA	64.50
R02.08.123D.00	KIT,ELE,GR96,2400W,208V,(.260)	EA	72.40
R02.08.124D.00	KIT,ELE,GR96,2400W,240V,(.260)	EA	72.40
R02.08.124E.00	KIT,ELE,GR96,2400W,240V.26 EXP	EA	72.40
R02.08.125D.00	KIT,ELE,GR54,1250W,120V,(.260)	EA	48.70
R02.08.126D.00	KIT,ELE,GR18,350W,120V,(.260)	EA	32.90
R02.08.127D.00	KIT,ELE,GR30,660W,120V,(.260)	EA	36.80
R02.08.128D.00	KIT,ELE,GR30,660W,208V,(.260)	EA	36.80
R02.08.129D.00	KIT,ELE,GR30,660W,240V,(.260)	EA	36.80
R02.08.129E.00	KIT,ELE,GR30,660W,240V.26(EXP)	EA	36.80
R02.08.130D.00	KIT,ELE,GR54,1250W,208V,(.260)	EA	48.70
R02.08.131D.00	KIT,ELE,GR54,1250W,240V,(.260)	EA	48.70
R02.08.131E.00	KIT,ELE,GR54,1250W,240V.26 EXP	EA	48.70
R02.08.132D.00	KIT,ELE,GR66,1560W,120V,(.260)	EA	59.20
R02.08.133D.00	KIT,ELE,GR66,1560W,208V,(.260)	EA	59.20
R02.08.134D.00	KIT,ELE,GR66,1560W,240V,(.260)	EA	59.20
R02.08.134E.00	KIT,ELE,GR66,1560W,240V.26 EXP	EA	59.20
R02.08.135D.00	KIT,ELE,GR18,350W,240V,(.260)	EA	32.90
R02.08.135E.00	KIT,ELE,GR18,350W,240V.26 EXP	EA	32.90
R02.08.136E.00	KIT,ELE,GR24,500W,220V,(.260)	EA	34.20
R02.08.137D.00	KIT,ELE,GR18,350W,208V,(.260)	EA	32.90
R02.08.138E.00	KIT,ELE,GR18,350W,220V,.26 EXP	EA	32.90
R02.08.139E.00	KIT,ELE,GR30,660W,220V,(.260)	EA	36.80
R02.08.140E.00	KIT,ELE,GR36,800W,220V,(.260)	EA	38.20
R02.08.141E.00	KIT,ELE,GR42,950W,220V.26(EXP)	EA	42.10
R02.08.142E.00	KIT,ELE,GR48,1100W,220V,(.260)	EA	44.70
R02.08.143E.00	KIT,ELE,GR54,1250W,220V,(.260)	EA	48.70
R02.08.144E.00	KIT,ELE,GR60,1400W,220V.26 EXP	EA	55.30
R02.08.145E.00	KIT,ELE,GR66,1560W,220V.26 EXP	EA	59.20
R02.08.148E.00	KIT,ELE,GR72,1725W,220V,(.260)	EA	60.50
R02.08.149E.00	KIT,ELE,GR84,2050W,220V.26 EXP	EA	63.20
R02.08.150E.00	KIT,ELE,GR96,2400W,220V.26 EXP	EA	72.40
R02.08.202D.00	KIT,ELE,GR30,350W,120V,(.260)	EA	36.80
R02.08.204D.00	KIT,ELE,GR42,550W,120V,(.260)	EA	38.20
R02.08.205D.00	KIT,ELE,GR48,650W,120V,(.260)	EA	44.70
R02.08.206D.00	KIT,ELE,GR54,750W,120V,(.260)	EA	48.70
R02.08.207D.00	KIT,ELE,GR60,850W,120V,(.260)	EA	55.30
R02.08.208D.00	KIT,ELE,GR66,950W,120V,(.260)	EA	59.20
R02.08.209D.00	KIT,ELE,GR72,1025W,120V,(.260)	EA	60.50
R02.08.210D.00	KIT,ELE,GR84,1200W,120V,(.260)	EA	64.50
R02.08.211D.00	KIT,ELE,GR96,1400W,120V,(.260)	EA	72.40
R02.08.212D.00	KIT,ELE,GR51,360W,120V,(.260)	EA	47.40
R02.08.214D.00	KIT,ELE,GR39,225W,120V,(.260)	EA	38.20
R02.08.217D.00	KIT,ELEMENT,GR-45,325W,120V	EA	38.90



Replacement Parts Price List in Canadian Dollars

January 1, 2012

Item	Description	Unit of Measure	List Price
R02.08.219D.00	KIT,ELE,SD36,300W,120V,(.260)	EA	37.90
R02.08.222D.00	KIT,ELE,GRSD30,200W,120V,.260	EA	35.80
R02.08.223D.00	KIT,ELE,GRSD36,250W,120V,.260	EA	36.80
R02.08.224D.00	KIT,ELE,GRSD41,280W,120V,.260	EA	38.90
R02.08.225D.00	KIT,ELE,GRSD24,180W,120V,.260	EA	34.20
R02.08.226D.00	KIT,ELE,GRSD30,240W,120V,.260	EA	36.80
R02.08.228E.00	KIT,ELE,GRSD36,280W,240V,.260	EA	37.90
R02.08.229E.00	KIT,ELE,GR41,315W,240V,(.260)	EA	46.10
R02.08.230E.00	KIT,ELE,GRSD52,400W,240V,.260	EA	45.30
R02.08.231D.00	KIT,ELE,GR33,170W,120V,.260	EA	37.90
R02.08.232E.00	KIT,ELE,GRSD30,225W,240V(.260)	EA	36.80
R02.08.240D.00	KIT,ELE,GR48,365W,120V,(.260)	EA	46.10
R02.08.250E.00	KIT,ELE,GR30,350W,220V,.26 EXP	EA	36.80
R02.08.251.00	KIT, HEATING ELEMENT 350W 240V	EA	36.80
R02.08.254D.00	KIT,ELE,GR42,450W,240V,(.260)	EA	41.10
R02.08.256E.00	KIT,ELE,GR54,750W,220V.26(EXP)	EA	47.40
R02.08.257E.00	KIT,ELE,GR54,750W,240V.26(EXP)	EA	47.40
R02.08.258D.00	KIT,ELE,GR18,165W,120V,(.260)	EA	32.60
R02.08.262D.00	KIT,ELE,GRSD60,450W,120V,.260	EA	54.70
R02.08.264E.00	KIT,ELE,GRSD60,450W,240V,(.26)	EA	54.70
R02.08.265E.00	KIT,ELE,GR45,325W,240V.26(EXP)	EA	44.20
R02.08.269D.00	KIT,ELE,GR2SD-30,225W,120V,.26	EA	36.80
R02.08.270D.00	KIT,ELE,GR2SD-36,275W,120V,.26	EA	37.90
R02.08.271D.00	KIT,ELE,GR2SD-41,325W,120V,.26	EA	41.10
R02.08.272D.00	KIT,ELE,GR2SD-48,375W,120V,.26	EA	44.20
R02.08.273D.00	KIT,ELE,2SD54,425W,120V,(.260)	EA	47.40
R02.08.274D.00	KIT,ELE,GR2SD-60,475W,120V,.26	EA	54.70
R02.08.275D.00	KIT,ELE,2SD-24,175W,120V,(.26)	EA	31.60
R02.08.300D.00	KIT,ELEMENT 390W 120V,(.260)	EA	34.20
R02.08.301D.00	KIT,ELEMENT 550 WATT, 120 VOLT	EA	34.20
R02.08.302D.00	KIT,ELE,GRHW,500W,120V,.260	EA	40.00
R02.08.303E.00	KIT,ELE,GRHW UHWD,500W,240V	EA	35.80
R02.08.306D.00	KIT,ELE,GRHW,350W,120V,(.260)	EA	36.80
R02.08.400.00	KIT DUAL WATT ELE,130/195W,115	EA	38.90
R02.08.401.00	KIT, DUAL WATT ELE130/195W,240	EA	38.90
R02.08.530.00	KIT,ELE,GRSD24,175W,220V,.260	EA	33.70
R02.08.531E.00	KIT,ELE,GRSDS/DH-225W,220V ELE	EA	36.80
R02.08.532E.00	KIT,ELE,275W,220V,.260(EXP)	EA	37.90
R02.08.533E.00	KIT,ELE,325W,220V,.26(EXP)	EA	41.10
R02.08.555D.00	KIT,ELE,GRJW-2,300W,120V,(.26)	EA	36.80
R02.08.560.00	KIT,ELEMENT GR30 350WATT 100V	EA	35.80
R02.08.561E.00	KIT,ELE,GR24,500W,100V.26(EXP)	EA	34.20
R02.08.562E.00	KIT,ELEMENT GR30 660WATT 100V	EA	36.80
R02.08.563E.00	KIT,ELE,GR36,800W,100V.26(EXP)	EA	37.90
R02.08.564E.00	KIT,ELEMENT GR42 950 WATT 100V	EA	42.10
R02.08.566E.00	KIT,ELEMENT GR48 1100W 100V	EA	44.70
R02.08.569.01	KIT,AIR ELEMENT,600W,120V	EA	44.20
R02.08.569.07	KIT,AIR ELEMENT,800W,120V	EA	40.00
R02.08.570E.02	KIT,1050 WATT 220V AIR ELEMENT	EA	54.70
R02.08.570E.03	KIT,1050 WATT 240V AIR ELEMENT	EA	54.70



Replacement Parts Price List in Canadian Dollars

January 1, 2012

Item	Description	Unit of Measure	List Price
R02.08.574E.00	KIT,ELEMENT,AIR,800W,240V	EA	52.60
R02.08.581.01	KIT,ELEMENT,HWB-RECT,750W,120V	EA	66.30
R02.08.581.02	KIT,ELEMENT,HWB,REC,1200W,120V	EA	68.40
R02.08.589.00	KIT,ELE,GRM-18,450W,120V,.260	EA	34.70
R02.08.590.00	KIT,ELE,GRM-18,450W,208V,.260	EA	34.70
R02.08.591.00	KIT,ELE,GRM-18,450W,240V,.260	EA	34.70
R02.08.592.00	KIT,ELE,GRM-24,650W,120V,.260	EA	36.80
R02.08.593.00	KIT,ELE,GRM-24,650W,208V,.260	EA	36.80
R02.08.594.00	KIT,ELE,GRM-24,650W,240V,.260	EA	36.80
R02.08.595.00	KIT,ELE,GRM-30,825W,120V,.260	EA	37.90
R02.08.596.00	KIT,ELE,GRM-30,825W,208V,.260	EA	37.90
R02.08.597.00	KIT,ELE,GRM-30,825W,240V,.260	EA	37.90
R02.08.598.00	KIT,ELE,GRM-36,1000W,120V,.260	EA	38.90
R02.08.599.00	KIT,ELE,GRM-36,1000W,208V,.260	EA	38.90
R02.08.600.00	KIT,ELE,GRM-36,1000W,240V,.260	EA	38.90
R02.08.601.00	KIT,ELE,GRM-42,1175W,120V,.260	EA	43.20
R02.08.602.00	KIT,ELE,GRM-42,1175W,208V,.260	EA	43.20
R02.08.603.00	KIT,ELE,GRM-42,1175W,240V,.260	EA	43.20
R02.08.604.00	KIT,ELE,GRM-48,1300W,120V,.260	EA	45.30
R02.08.605.00	KIT,ELE,GRM-48,1300W,208V,.260	EA	45.30
R02.08.606.00	KIT,ELE,GRM-48,1300W,240V,.260	EA	45.30
R02.08.607.00	KIT,ELE,GRM-54,1500W,120V,.260	EA	48.40
R02.08.608.00	KIT,ELE,GRM-54,1500W,208V,.260	EA	48.40
R02.08.609.00	KIT,ELE,GRM-54,1500W,240V,.260	EA	48.40
R02.08.610.00	KIT,ELE,GRM-60,1700W,120V,.260	EA	55.80
R02.08.611.00	KIT,ELE,GRM-60,1700W,208V,.260	EA	55.80
R02.08.612.00	KIT,ELE,GRM-60,1700W,240V,.260	EA	55.80
R02.08.613.00	KIT,ELE,GRM-66,1875W,208V,.260	EA	60.00
R02.08.614.00	KIT,ELE,GRM-66,1875W,240V,.260	EA	60.00
R02.08.615.00	KIT,ELE,GRM-72,2075W,208V,.260	EA	62.10
R02.08.616.00	KIT,ELE,GRM-72,2075W,240V,.260	EA	62.10
R02.08.617.00	KIT,ELE,GRM-84,2400W,208V,.260	EA	66.30
R02.08.618.00	KIT,ELE,GRM-84,2400W,240V,.260	EA	66.30
R02.08.619.00	KIT,ELE,GRM-96,2675W,208V,.260	EA	73.70
R02.08.620.00	KIT,ELE,GRM-96,2675W,240V,.260	EA	73.70
R02.08.623.00	KIT,ELE,AIR,1500W,120V,FSHC-17	EA	175.80
R02.08.625.01	KIT,AIR ELEMENT 425W 120V HC-8	EA	57.90
R02.08.633E.00	KIT,ELE,GRCMW,350W,240V,(.260)	EA	36.80
R02.08.644.00	KIT,ELE,GMFFL,500W,230 VOLT	EA	34.20
R02.08.645.00	KIT,ELE,GMFFL,500W,120 VOLT	EA	34.20
R02.09.001.00	KIT,ELEMENT 200W 120V,2SLICE	EA	20.00
R02.09.002.00	KIT,ELEMENT 200W 104V,2 SLICE	EA	20.00
R02.09.003.00	KIT,ELEMENT 200W 190V,2 SLICE	EA	20.00
R02.09.004.00	KIT,ELEMENT 250W 120V,2 SLICE	EA	20.00
R02.09.005.00	KIT,ELEMENT 250W 104V,2 SLICE	EA	20.00
R02.09.007.00	KIT,ELEMENT 200W 60V,2 SLICE	EA	20.00
R02.09.013.00	KIT,ELEMENT 325W 104V,2 SLICE	EA	20.00
R02.09.014.00	KIT,ELEMENT 325W 120V,2 SLICE	EA	20.00
R02.09.015.00	KIT,ELEMENT 330W 104V,2 SLICE	EA	20.00
R02.09.016.00	KIT,ELEMENT 330W 120V,3 SLICE	EA	23.20



Replacement Parts Price List in Canadian Dollars

January 1, 2012

Item	Description	Unit of Measure	List Price
R02.09.017.00	KIT,ELEMENT 250W 104V,3 SLICE	EA	23.20
R02.09.018.00	KIT,ELEMENT 250W 120V,3 SLICE	EA	23.20
R02.09.019.00	KIT,ELEMENT 125W 120V,3 SLICE	EA	23.20
R02.09.020.00	KIT,ELEMENT 125W 104V,3 SLICE	EA	23.20
R02.09.024.00	KIT,ELEMENT 250W 60V,2 SLICE	EA	20.00
R02.09.027.00	KIT,ELEMENT 250W 190V,2 SLICE	EA	20.00
R02.09.030.00	KIT,ELEMENT 200W 120V,TQ	EA	20.00
R02.09.031.00	KIT,ELEMENT 325W 120V,TQ	EA	20.00
R02.09.035.00	KIT,ELEMENT 330W 110V,3 SLICE	EA	23.20
R02.09.036.00	KIT,ELEMENT 250W 110V,3 SLICE	EA	23.20
R02.09.037.00	KIT,ELEMENT 200W 208V,TQ	EA	20.00
R02.09.038.00	KIT,ELEMENT 200W 220V,TQ	EA	20.00
R02.09.039.00	KIT,ELEMENT 200W 240V,TQ	EA	20.00
R02.09.040.00	KIT,ELEMENT 325W 208V,TQ	EA	20.00
R02.09.041.00	KIT,ELEMENT 325W 220V,TQ	EA	20.00
R02.09.042.00	KIT,ELEMENT 325W 240V,TQ	EA	20.00
R02.09.044.00	KIT,ELEMENT 350W 240V,TQ	EA	20.00
R02.09.045.00	KIT,ELEMENT 125W 110V,3 SLICE	EA	23.20
R02.09.047.00	KIT,ELEMENT 250W 120V,TQ	EA	20.00
R02.09.048.00	KIT,ELEMENT 250W 208V,TQ	EA	20.00
R02.09.050.00	KIT,ELEMENT 250W 240V,TQ	EA	20.00
R02.09.051.00	KIT,ELEMENT 275W,120V,TQ	EA	20.00
R02.09.052.00	KIT,ELEMENT 275W 208V,TQ	EA	20.00
R02.09.053.00	KIT,ELEMENT 275W 230V,TQ	EA	20.00
R02.09.054.00	KIT,ELEMENT 275W 240V,TQ	EA	20.00
R02.09.056.00	KIT,ELEMENT 200W 115V, 2 SLICE	EA	20.00
R02.09.057.00	KIT,ELEMENT 250W 115V, 2 SLICE	EA	20.00
R02.09.058.00	KIT,ELEMENT 325W 115V,2 SLICE	EA	20.00
R02.09.059.00	KIT,ELEMENT 125W 115V,3 SLICE	EA	23.20
R02.09.060.00	KIT,ELEMENT 250W 115V,3 SLICE	EA	23.20
R02.09.061.00	KIT,ELEMENT 330W 115V,3 SLICE	EA	23.20
R02.09.062.00	KIT,ELEMENT 375W 240V,TQ	EA	20.00
R02.09.063.00	KIT,ELEMENT 375W 208V,TQ	EA	20.00
R02.09.064.00	KIT,ELEMENT 375W 220V,TQ	EA	20.00
R02.09.065.00	KIT,ELEMENT 470W 120V,3 SLICE	EA	23.20
R02.09.200E.00	KIT,ELEM.200W 110V 2 SLICE"CE"	EA	23.20
R02.09.201E.00	KIT,ELEM.250W 110V 2 SLICE"CE"	EA	23.20
R02.09.202E.00	KIT,ELEM.250W 110V 3 SLICE"CE"	EA	23.20
R02.09.203E.00	KIT,ELEMENT 200W 220V,TQ,"CE"	EA	23.20
R02.09.204E.00	KIT,ELEMENT 250W 220V,TQ,"CE"	EA	23.20
R02.09.205E.00	KIT,ELEMENT 275W 220V,TQ,"CE"	EA	23.20
R02.09.206E.00	KIT,ELEMENT 325W 220V,TQ,"CE"	EA	23.20
R02.09.207E.00	KIT,ELEMENT 200W,120V,2/S,"CE"	EA	23.20
R02.09.208E.00	KIT,ELEMENT 250W,120V,2/S,"CE"	EA	23.20
R02.09.209E.00	KIT,ELEM.325W,120V,2 SLICE"CE"	EA	23.20
R02.09.210E.00	KIT,ELEM.250W 120V,3 SLICE"CE"	EA	25.30
R02.09.211.00	KIT,ELEM.330W 120V,3 SLICE"CE"	EA	25.30
R02.09.212.00	KIT,ELEM.470W 120V,3 SLICE"CE"	EA	25.30
R02.09.212E.00	KIT,ELEM.470W 120V 3 SLICE"CE"	EA	25.30
R02.09.213.00	KIT,ELEM.125W 120V,3 SLICE"CE"	EA	25.30



Replacement Parts Price List in Canadian Dollars

January 1, 2012

Item	Description	Unit of Measure	List Price
R02.09.214E.00	KIT,ELEMENT,200W,240V,TQ,"CE"	EA	23.20
R02.09.215E.00	KIT,ELEMENT,250W,240V,TQ,"CE"	EA	23.20
R02.09.216E.00	KIT,ELEMENT 275W 240V,TQ,"CE"	EA	23.20
R02.09.217E.00	KIT,ELEMENT 325W 240V,TQ,"CE"	EA	23.20
R02.09.218E.00	KIT,ELEMENT 350W 240V,TQ,"CE"	EA	23.20
R02.09.219.00	KIT,ELEMENT 375W 240V,TQ,"CE"	EA	23.20
R02.09.221E.00	KIT,ELEM.330W 110V,3 SLICE"CE"	EA	37.50
R02.09.222E.00	KIT,ELEM.470W 110V,3 SLICE"CE"	EA	25.30
R02.09.225E.00	KIT,ELEMENT 200W,120V,TQ,"CE"	EA	30.30
R02.09.226E.00	KIT,ELEMENT 200W 101V,TQ,"CE"	EA	30.30
R02.09.227E.00	KIT,ELEMENT 275W 139V,TQ,"CE"	EA	30.30
R02.09.228E.00	KIT,ELEMENT,350W,120V,TQ,"CE"	EA	30.30
R02.09.229.00	KIT,ELEMENT 325W 80V,TQ,"CE"	EA	30.30
R02.09.230.00	KIT,ELEMENT 325W 149V,TQ,"CE"	EA	30.30
R02.09.231.00	KIT,ELEMENT 200W 91V,TQ,"CE"	EA	30.30
R02.09.232.00	KIT,ELEMENT 275W 120V,TQ,"CE"	EA	30.30
R02.09.278.00	KIT,HEAT ELEM,OUTER,340W,TPU	EA	8.40
R02.09.279.00	KIT,HEAT ELEM,INNER,432W,TPU	EA	8.40
R02.11.013.00	KIT,BLANK BOOSTER FLANGE	EA	25.30
R02.12.001.00	KIT,MOTOR,BLOWER&CORD 120V60z	EA	121.60
R02.12.003.00	KIT,BLOWER MOTOR-FS&FSHC-120V	EA	255.30
R02.12.012.00	KIT,BLOWER MOTOR FS-230V 50-60	EA	255.30
R02.12.020.00	KIT,60HZ GEARMOTOR 6 RPM,208V	EA	185.50
R02.12.021.00	KIT,60HZ GEARMOTOR 6 RPM,230V	EA	185.50
R02.12.024.00	KIT,60HZ GEARMOTOR 6 RPM,115V	EA	185.50
R02.12.025.00	KIT,50HZ GEARMTR PF 6RPM,240V	EA	185.50
R02.12.052.00	KIT,EXHAUST BLOWER PMG 100&200	EA	208.00
R02.12.066.00	KIT,BLOWER MOTOR 120V FSHC-CB	EA	192.10
R02.12.066.01	KIT,BLOWER MOTOR 230V 50/60 HZ	EA	180.70
R02.12.067.00	KIT,BLOWER MOTOR & BLADE 120V	EA	111.60
R02.12.086.00	KIT,BLOWER FAN-TWIN,120V,60Hz	EA	264.20
R02.12.086.01	KIT,BLOWER FAN-TWIN,230V,50/60	EA	264.20
R02.12.098.00	KIT,BLOWER & BLADES,120 VOLT	EA	229.50
R02.12.106.00	KIT,BLOWER W/BLADES, 220/240V	EA	229.50
R02.13.100.00	KIT,100 OHM RHEOSTAT,25W	EA	81.60
R02.13.101.00	KIT, 75 OHM RHEOSTAT, 120 VOLT	EA	81.60
R02.13.111.00	KIT, 200 OHM RHEOSTAT, 25 WATT	EA	81.60
R02.13.125.00	KIT,250 OHM WIREWOUND RHEO,25W	EA	81.60
R02.13.346.00	KIT,PROX SWITCHES-FSD & FDWD	EA	29.50
R02.15.030.00	KIT,TERMINAL BLOCK 3 POLE "CE"	EA	11.80
R02.15.035.00	KIT,TERMINAL BLOCK-3 POLE-"CE"	EA	20.00
R02.15.045.00	KIT,TERMINAL BLOCK-2 POLE	EA	17.10
R02.15.046.00	KIT,TERMINAL BLOCK 3-POLE	EA	28.90
R02.15.047.00	KIT,TERMINAL BLOCK-4 POLE	EA	21.10
R02.15.048.00	KIT, TERMINAL BLOCK-5 POLE	EA	31.60
R02.15.049.00	KIT,TERMINAL BLOCK,8 POLE	EA	20.00
R02.16.029.00	KIT,THERMOSTAT W/EXPOSED DISC	EA	22.10
R02.16.036.00	KIT,HIGH LIMIT DISC	EA	52.60
R02.16.039.00	KIT,T-STAT CONTROL,DRY,82-200F	EA	65.80
R02.16.046.00	KIT,THERMOSTAT & KNOB, HDW	EA	86.80



**Replacement Parts Price List in Canadian Dollars****January 1, 2012**

<b>Item</b>	<b>Description</b>	<b>Unit of Measure</b>	<b>List Price</b>
R02.16.057.00	KIT,TID SS LED FAR	EA	173.70
R02.16.058.00	KIT,TID SS LED CEL	EA	173.70
R02.16.060.00	KIT,T-STAT MECH,DRY,133-450	EA	63.20
R02.16.060A.00	KIT,THERMOSTAT CONTROL, QW-6	EA	65.30
R02.16.065.00	KIT,T-STAT MECH DRY 175F.	EA	62.10
R02.16.066.00	KIT,T-STAT CONTROL-DRY, 253F	EA	61.80
R02.16.068.00	KIT,T-STAT CONTROL & PROBE-PMG	EA	177.60
R02.16.069.00	KIT,TEMP.CONTROL PROBE,PMG'S	EA	88.20
R02.16.073.00	KIT,THERMO DISC 168 DEG.F.	EA	47.00
R02.16.107.00	KIT,HIGH LIMIT,SURFACE,95F N/O	EA	61.10
R02.16.117.00	KIT,HIGH LIMIT DISK 300 F.	EA	46.10
R02.16.118.00	KIT,SURFACE HIGH LIMIT 250 F.	EA	28.40
R02.16.154.00	KIT,THERMAL DISK	EA	23.20
R02.17.002.00	KIT, TRANSFORMER 480/600-240V	EA	121.10
R02.17.003.00	KIT, TRANSFORMER 380/575-230V	EA	128.90
R02.18.030.00	KIT, HSJO CORD W/HDW	EA	25.00
R02.18.039.00	KIT,CORD 30A 125V HSJO 12/3	EA	71.00
R02.18.133.049	KIT,8 WIRE CABLE W/MALE PLUG	EA	37.90
R02.18.133.165	KIT,8 WIRE CABLE W/MALE PLUG	EA	37.90
R02.18.154.00	KIT,CORD & PLUG 15A 125V 14/3	EA	25.00
R02.18.286.00	KIT,HIGH LIMIT SENSOR&HARNESS	EA	90.50
R02.19.004.00	KIT,20A 125/250V,DOOR SW.SPDT	EA	26.30
R02.19.006.00	KIT,TOG SWITCH,20A, 2P-2POLE	EA	51.30
R02.19.008A.00	KIT,15A, DPST TOG SW.125/250V	EA	26.30
R02.19.016.00	KIT,TOGGLE SW.15AMP-SPST-125V	EA	26.30
R02.19.017.00	KIT,208V INFINITE SWITCH	EA	53.90
R02.19.018.00	KIT,120V INFINITE SWITCH	EA	53.90
R02.19.019.00	KIT,240V INFINITE SWITCH	EA	53.90
R02.19.028.00	KIT,TOASTER FUSE HOLDER & FUSE	EA	32.90
R02.19.082.00	KIT,SELECTOR SWITCH-TRH-TK	EA	56.60
R02.19.083.00	KIT,SELECTOR SWITCH-TQ-300	EA	56.60
R02.19.160.00	KIT,100V INFINITE SWITCH&LEADS	EA	53.90
R02.19.162.00	KIT,DRAIN SWITCH-FR2 & 3CS2	EA	22.10
R02.20.061.00	KIT, 60 MINUTE MANUAL TIMER	EA	60.50
R02.20.259.00	KIT,CORD GRIP LIQ TITE W/NUT	EA	5.30
R02.21.022.00	KIT,PMG IGNITION MODULE	EA	239.50
R02.21.039.00	KIT,SPARK CABLE CONV-100/200	EA	75.80
R02.21.040.00	KIT,SPARK CABLE CONV-PMG-60	EA	48.00
R02.22.001.00	KIT,HALIENT-ELE.2500W 240V 9"	EA	127.60
R02.22.002.00	KIT,HALIENT-ELE. 2400W 208V 9"	EA	127.60
R02.22.003.00	KIT,HALIENT-ELE.1200W 240V 6"	EA	114.70
R02.22.004.00	KIT,HALIENT-ELE. 1200W 208V 6"	EA	114.70
R02.22.007.00	KIT,HALIENT-ELE. 2500W 400V 9"	EA	127.60
R02.22.008.00	KIT,HALIENT-ELE. 1200W 400V 6"	EA	114.70
R02.22.009.00	KIT,HALIENT-ELE. 2400W 208V 9"	EA	127.60
R02.30.117.00	KIT,LAMP-300W,130V,HALOGEN	EA	17.00
R02.30.132.00	KIT,BALLAST,120-277V,50/60HZ	EA	49.50
R02.30.168.00	KIT,LAMP,50W,120V,XENON	EA	19.00
R02.40.047.00	KIT,DIODE ASSEMBLY	EA	17.00
R03.02.040.00	KIT,SOLENOID VALVE,24V,AWD	EA	146.10



Replacement Parts Price List in Canadian Dollars

January 1, 2012

Item	Description	Unit of Measure	List Price
R03.04.004.00	KIT,3/4"MANIFOLD ASSY.PMG-60	EA	64.20
R03.05.027.00	KIT,PUMP W/GASKETS-PMG-60	EA	643.40
R03.05.049.00	KIT,FLEX WATER LINE & GASKET	EA	34.70
R03.05.052.00	KIT,PUMP W/GASKETS-PMG-100&200	EA	700.00
R03.05.106.00	KIT,SEALS FOR PMG PUMP ASSY	EA	194.70
R03.12.007.00	KIT,PMG-60 BURNER BLADES	EA	90.80
R03.12.008.00	KIT,HEAT EXCHANGER-PMG-60	EA	2,077.60
R03.12.010.00	KIT,GAS PILOT ASSY-NAT & LP	EA	64.50
R03.12.013B.00	KIT,HEAT EXCHANGER-PMG-100	EA	2,230.30
R03.12.017B.00	KIT-HEAT EXCHANGER-PMG-200	EA	2,664.50
R03.12.022.00	KIT,PMG60 ALTITUDE BLK ORIFICE	EA	20.00
R03.12.023.00	KIT,PMG100/200 ALTITUDE ORIFIC	EA	38.20
R03.17.001.01	KIT,FRONT SS HEAD & GASKET-1EL	EA	164.50
R03.17.002.01	KIT,REAR SS HEAD & GASKET 1 EL	EA	164.50
R03.17.003.01	KIT,FRONT SS HEAD & GASKET-2/3	EA	164.50
R03.17.004.01	KIT,REAR SS HEAD & GASKET-2/3	EA	164.50
R03.40.014.00	KIT,3/8 GALV SEAMLESS PIPE CAP	EA	3.90
R03.40.035.00	KIT,VALVE,SOL.2-WAY,1/8NPT 120	EA	161.00
R03.40.052.00	KIT,PLUMBING 90 DEGREE-FSD	EA	32.60
R03.40.054.00	KIT,PLASTIC DRAIN TUBE FS/FDW	EA	31.60
R03.40.055.00	KIT,CEILING DRAIN FS/FDW	EA	49.50
R03.40.058.00	KIT,PLUMBING,STRAIGHT-FSD	EA	34.70
R03.40.063.00	KIT, DRAIN CAP & GASKET	EA	7.40
R04.01.020P.00	KIT, PAINT SM CM BASE ASSEMBLY	EA	197.40
R04.01.022.00	KIT, SM CM S.S. BASE ASSEMBLY	EA	271.10
R04.01.032.00	KIT,SM.COMPACT PAINTED JACKET	EA	150.00
R04.01.033.00	KIT,PAINTED SM CM BASE FRONT	EA	38.20
R04.01.034.00	KIT,SM.COMPACT S.S. JACKET	EA	231.60
R04.01.035.00	KIT,S.S. SM CM BASE FRONT	EA	42.10
R04.01.036.00	KIT,SM.COMPACT FRONT COVER	EA	53.90
R04.01.100P.00	KIT,MCH BOOSTER JACKET-PAINTED	EA	90.80
R04.01.105.00	KIT, MC BOOSTER FRONT	EA	44.70
R04.01.110P.00	KIT, MC BOOSTER BASE-PAINTED	EA	93.40
R04.01.201P.00	KIT, PAINT LG CM BASE ASSEMBLY	EA	152.60
R04.01.220.00	KIT, LG.COMPACT PTD JACKET	EA	184.20
R04.01.221.00	KIT,LG.COMPACT S.S.FRONT COVER	EA	59.20
R04.01.223.00	KIT,PAINTED LG.CM BASE FRONT	EA	31.60
R04.01.251.00	KIT, LG.CM S.S.BASE ASSEMBLY	EA	351.30
R04.01.254.00	KIT,LG.COMPACT S.S. JACKET	EA	365.30
R04.01.255.00	KIT,S.S. LG.CM BASE FRONT	EA	47.40
R04.01.286.00	KIT,PAINTED SM C BASE FRONT-EZ	EA	37.90
R04.01.287.00	KIT,S.S.LC BASE FRONT-EZ	EA	46.30
R04.01.288.00	KIT,PAINTED LC BASE FRONT-EZ	EA	31.60
R04.01.292.00	KIT,BASE ASSY.S.S.LC EZ.	EA	329.00
R04.01.293.00	KIT,PAINT,LG CM BASE ASSY-EZ	EA	147.00
R04.03.002P.00	KIT, PAINT IMP BASE	EA	136.80
R04.03.004.00	KIT, IMP S.S.BASE	EA	271.10
R04.03.024.00	KIT,PAINTED IMP "S" JACKET	EA	305.30
R04.03.025.00	KIT,IMPERIAL "S" FRONT COVER	EA	121.10
R04.03.027.00	KIT,IMP INNER PANEL W/COVER	EA	38.20



Replacement Parts Price List in Canadian Dollars

January 1, 2012

Item	Description	Unit of Measure	List Price
R04.03.030.00	KIT,PAINTED IMP"S"BASE FRONT	EA	47.40
R04.03.031.00	KIT,S.S. IMP "S" JACKET	EA	469.70
R04.03.032.00	KIT,S.S. IMP"S" BASE FRONT	EA	52.60
R04.05.002.00	KIT,RH SIDE PANEL VERT TOASTER	EA	156.60
R04.05.003.00	KIT,LH SIDE PANEL VERT TOASTER	EA	156.60
R04.05.004.00	KIT,TK 2/S TOASTER FRAME TOP	EA	121.10
R04.05.005.00	KIT,TK 3/S TOASTER FRAME TOP	EA	152.60
R04.05.008.00	KIT,LG 3/S TK FRAME BACK PANEL	EA	89.50
R04.05.252.00	SERVQ TQ-700H WIRE FEEDER RAMP	EA	63.20
R04.05.356.00	KIT,CRUMB TRAY-LONG	EA	35.80
R04.05.361.00	KIT,CRUMB TRAY-SHORT	EA	30.30
R04.05.388.00	KIT,TQ2-SECURITY	EA	110.50
R04.05.458.00	KIT, TOP COVER,,BLACK,TQ-20BA	EA	72.60
R04.05.461.00	KIT,SIDE PANEL,RIGHT,TQ-20BA	EA	49.50
R04.05.462.00	KIT,SIDE PANEL,LEFT,TQ-20BA	EA	49.50
R04.05.481.00	KIT,CRUMB TRAY, TQ-1800 SERIES	EA	52.60
R04.05.501.00	KIT,RH SIDE PANEL TRH TOASTER	EA	103.90
R04.05.502.00	KIT,LH SIDE PANEL TRH TOASTER	EA	103.90
R04.05.503.00	KIT,TRH TOASTER FRAME TOP	EA	121.10
R04.05.540.01	KIT,TQ2-SECURITY W/HOLES-BLACK	EA	88.40
R04.05.562.00	KIT, TOP COVER ASSEMBLY, TM-5H	EA	69.50
R04.05.580.00	KIT,CRUMB TRAY ASSY, TM-5H	EA	27.40
R04.05.619.00	KIT, TOP COVER ASSEMBLY, TM-10H	EA	80.00
R04.05.625.00	KIT,CRUMB TRAY ASSY, TM-10H	EA	32.60
R04.08.043.00	KIT, GR C-LEG STAND 10"	EA	52.00
R04.08.071.00	KIT, GR C-LEG STND 13 1/2"	EA	58.60
R04.08.073.00	KIT, GR 18" T-LEG	EA	110.50
R04.08.074.00	KIT,GR,16"T-LEG	EA	105.50
R04.08.075.00	KIT,GR,13 1/2"T-LEG	EA	99.00
R04.08.076.00	KIT,GR,10" T-LEG	EA	93.20
R04.09.056.00	KIT,BACK-UP & ELE SUPPORT PLTE	EA	11.60
R04.09.400.00	KIT,120V MOLDED,HTD BASE GRFFB	EA	374.00
R04.09.401.00	KIT,230V MOLDED,HTD BASE GRFFB	EA	374.00
R04.12.040.00	KIT,BREATH PROTECTOR GR-24	EA	91.60
R04.12.041.00	KIT,BREATH PROTECTOR GR-30	EA	105.30
R04.12.042.00	KIT,BREATH PROTECTOR GR-36	EA	136.80
R04.12.043.00	KIT,BREATH PROTECTOR GR-42	EA	153.70
R04.12.044.00	KIT,BREATH PROTECTOR GR-48	EA	166.30
R04.12.045.00	KIT,BREATH PROTECTOR GR 54	EA	177.90
R04.12.046.00	KIT,BREATH PROTECTOR GR-60	EA	194.70
R04.12.047.00	KIT,BREATH PROTECTOR GR-66	EA	212.60
R04.12.048.00	KIT,BREATH PROTECTOR GR-72	EA	227.40
R04.12.050.00	KIT,BREATH PROTECTOR GRBW-24	EA	91.60
R04.12.051.00	KIT,BREATH PROTECTOR GRBW-30	EA	105.30
R04.12.052.00	KIT,BREATH PROTECTOR GRBW-36	EA	136.80
R04.12.053.00	KIT,BREATH PROTECTOR GRBW-42	EA	153.70
R04.12.054.00	KIT,BREATH PROTECTOR GRBW-48	EA	166.30
R04.12.055.00	KIT,BREATH PROTECTOR GRBW-54	EA	177.90
R04.12.056.00	KIT,BREATH PROTECTOR GRBW-60	EA	194.70
R04.12.057.00	KIT,BREATH PROTECTOR GRBW-66	EA	212.60



Replacement Parts Price List in Canadian Dollars

January 1, 2012

Item	Description	Unit of Measure	List Price
R04.12.058.00	KIT,BREATH PROTECTOR GRBW-72	EA	227.40
R04.12.059.00	KIT,BREATH PROTECTOR GRHW-1P	EA	90.80
R04.12.060.00	KIT,BREATH PROTECTOR,GRHW-2P	EA	152.60
R04.12.061.00	KIT, BREATH PROTECTOR GR-84	EA	255.80
R04.12.062.00	KIT, BREATH PROTECTOR GR-96	EA	285.30
R04.12.064.00	KIT, BREATH PROTECTOR GR-18	EA	73.70
R04.12.092.00	KIT,SNEEZE GUARD,GRBW-30,14"	EA	154.00
R04.12.093.00	KIT,BREATH PROTECTOR GR2BW-24	EA	91.60
R04.12.094.00	KIT,BREATH PROTECTOR GR2BW-30	EA	105.30
R04.12.095.00	KIT,BREATH PROTECTOR GR2BW-36	EA	136.80
R04.12.096.00	KIT,BREATH PROTECTOR GR2BW-42	EA	153.70
R04.12.097.00	KIT,BREATH PROTECTOR GR2BW-48	EA	166.30
R04.12.098.00	KIT,BREATH PROTECTOR GR2BW-54	EA	188.20
R04.12.099.00	KIT,BREATH PROTECTOR GR2BW-60	EA	194.70
R04.12.100.00	KIT,BREATH PROTECTOR GR2BW-66	EA	212.60
R04.12.101.00	KIT, BREATH PROTECTOR GR2BW-72	EA	228.90
R04.12.156.00	KIT,BREATH PROTECTOR GRSDS-41	EA	197.90
R04.12.157.00	KIT,BREATH PROTECTOR,GRSDS-52	EA	232.10
R04.12.162.00	KIT,BREATH PROTECTOR GR2SD-24	EA	248.70
R04.12.163.00	KIT,BREATH PROTECTOR,GR2SD-30	EA	306.60
R04.12.164.00	KIT,BREATH PROTECTOR,GR2SD-36	EA	367.10
R04.12.165.00	KIT,BREATH PROTECTOR,GR2SD-42	EA	425.00
R04.12.166.00	KIT,BREATH PROTECTOR,GR2SD-48	EA	484.20
R04.12.167.00	KIT,BREATH PROTECTOR,GR2SD-54	EA	542.10
R04.12.168.00	KIT,BREATH PROTECTOR,GR2SD-60	EA	601.30
R04.12.169.00	KIT,DOOR W/HDW,NO-CONTROL SIDE	EA	121.10
R04.12.170.00	KIT,DOOR W/HDW-CONTROL SIDE	EA	121.10
R04.12.203.00	KIT,GRJW-3 DOOR ASSEMBLY	EA	227.60
R04.12.205.00	KIT,GRJW-4 DOOR ASSEMBLY	EA	242.10
R04.12.210.00	KIT,SNEEZE GUARD,GRBW-48, 14"	EA	228.40
R04.12.212.00	KIT,SNEEZE GUARD,GRBW-60,14"	EA	274.70
R04.12.222.00	KIT,GRJW-2 DOOR ASSY-PULLOUT	EA	172.40
R04.12.241.00	KIT,SNEEZE GUARD,GRBW-72,14"	EA	335.80
R04.12.256.01	KIT,SNEEZE GAURD,GR3-39,BLACK	EA	156.80
R04.12.258.01	KIT,SNEEZE GUARD,GR3-27,BLACK	EA	156.80
R04.12.303.17	KIT,GR3HWH-1PD DOOR ASSY-ORG	EA	102.10
R04.12.325.00	KIT,GRCMW-1 SNEEZE GUARD ASSY	EA	391.60
R04.12.326.00	KIT,BREATH PROTECTOR,GRCMW-1DH	EA	409.50
R04.12.327.00	KIT,DOOR & BP-UPPER-GRCMW	EA	433.70
R04.12.327.01	KIT,DOOR,UPPER-GRCMW SERIES	EA	143.20
R04.12.329.00	KIT,GRHW-1SGD FRONT PANEL ASSY	EA	228.90
R04.12.349.00	KIT,FS2HAC FLIP DOOR ASSY	EA	114.70
R04.12.384.LH	KIT,FLIP-UP DOOR-L.H.FS2HAC-66	EA	148.00
R04.12.384.RH	KIT,FLIP-UP DOOR-R.H.FS2HAC-66	EA	148.00
R04.15.345.00	KIT,GRCW STACKING BRACKET-2PCS	EA	26.30
R04.16.122.00	KIT,Z-BRACKET ASSEMBLY-GRSB	EA	6.60
R04.16.500.00	KIT,NYLON ROLLER,STATIONARY	EA	11.80
R04.16.515.00	KIT,HDW DRAWER FRONT ONLY	EA	178.90
R04.16.519.00	KIT,HDW HEAT BAFFLE	EA	27.40
R04.16.533.00	KIT, DRAWER HANDLE	EA	34.20



Replacement Parts Price List in Canadian Dollars

January 1, 2012

Item	Description	Unit of Measure	List Price
R04.17.012.00	KIT,7 SHELF RACK,FS TALL	EA	359.20
R04.17.012.01	KIT,SPECIAL 5 SHELF RACK-FS	EA	303.90
R04.17.013.00	KIT,3 SHELF SANDWICH RACK,FST	EA	428.90
R04.17.016.00	KIT,4 SHELF HORIZONTAL RACK	EA	221.10
R04.17.018.00	KIT,4 SHELF SLANT RACK	EA	331.60
R04.17.019.00	KIT,SPCL 5 SHELF SLANT RACK	EA	463.20
R04.17.067.00	KIT,LEG BRACKET FS/FST/FSTMN	EA	15.90
R04.17.076.00	KIT, PRETZEL RACK COUPLING	EA	15.00
R04.17.078.00	KIT, SS RACK COUPLING	EA	15.00
R04.17.1162.00	KIT, LFST RACK ASSEMBLY	EA	946.30
R04.17.143.00	KIT, 6 SHELF WIRE RACK F/FSHC	EA	529.50
R04.17.180.00	KIT, 2" DIAMETER CASTER	EA	17.10
R04.17.181.00	KIT, MTG BRKTS FOR 2" CASTERS	EA	34.20
R04.17.217.00	KIT,FSHC 5" CASTER BASE	EA	505.30
R04.17.221.00	KIT,FSHC CORNER BRACKET	EA	28.90
R04.17.328.00	KIT,CHILIS S.S. UPPER DOOR	EA	125.00
R04.17.329.00	KIT,CHILIS S.S. LOWER DOOR	EA	125.00
R04.17.344.00	KIT,8 SHELF RACK-FST	EA	393.70
R04.17.376.00	KIT,FSHC STACKING HARDWARE	EA	74.70
R04.17.438.00	KIT,WFST PAINTED BLACK HOOD	EA	124.20
R04.17.440.00	KIT,4 SHELF RACK-WFST X	EA	577.60
R04.17.472.00	KIT,CABLE CONNECTOR ASSEMBLY	EA	35.80
R04.17.473.00	KIT,COUNTER BALANCE ASSEMBLY	EA	80.00
R04.17.615.00	KIT,FSD RACK COLLAR WITH PINS	EA	21.10
R04.17.667.00	KIT,RACK-8 SHELF-PFST SERIES	EA	366.30
R04.17.675.00	KIT,STRIKER PLATES W/HDW-FSD	EA	8.40
R04.17.864.06	KIT,FSHC-7/7 STACKING SLVR GRA	EA	98.90
R04.17.899.01	KIT,FSD BLACK PAINTED HOOD	EA	55.30
R04.17.986.00	KIT,BUMPER ASSY-FSHC-6/7	EA	57.90
R04.19.648.00	KIT,"Z" BRACKET ASSY-GRSBF	EA	8.40
R04.19.812.00	KIT,CONTROL COVER	EA	42.10
R04.20.030.00	KIT,SLIDE ANGLE BRACKET	EA	54.70
R04.22.406.00	KIT,2 PAN ENCLOSURE & DIVIDER	EA	196.80
R04.24.021.00	KIT,ONE FRENCH DOOR W/STRIKER	EA	121.10
R04.24.022.00	KIT, FDW DOOR ASSEMBLY	EA	121.10
R04.24.066.00	KIT,GLASS DOOR ASSEMBLY-FDW-MN	EA	172.40
R04.24.087.00	KIT,MOTORLESS RACK COUP & PIN	EA	34.70
R04.25.260.00	KIT,BREATH PRO.R.H. GRCSC-24	EA	202.10
R04.25.263.00	KIT,BREATH PRO.L.H. GRCSC-24	EA	207.90
R04.28.052.00	KIT,PMG-100,200 STRT4"DUCT ASY	EA	32.60
R04.28.053.00	KIT,PMG-100,200-90DEG 4" DUCT	EA	32.60
R04.28.077.00	KIT,EXHAUST OUTLET PMG 100&200	EA	32.60
R04.31.472.00	KIT,DESIGNER NON-ADJ LEG 10"	EA	170.50
R04.31.477.00	KIT,DESIGNER NON ADJ. LEG 14"	EA	192.10
R04.31.478.00	KIT,DESIGNER NON ADJ.LEG 16"	EA	169.50
R04.32.173.00	KIT,4" DESIGNER LEG	EA	20.30
R04.32.429.00	KIT,GR2SD-36 SIGN HOLDER ASSY	EA	203.20
R04.34.001.00	KIT,TF WIRE RACK W/PADDLE STOP	EA	52.60
R04.34.269.00	KIT,BROILIER PAN FOR TF SERIES	EA	131.60
R04.34.295.00	KIT,BROILER PAN,TF-2005, S.S.	EA	96.80



Replacement Parts Price List in Canadian Dollars

January 1, 2012

Item	Description	Unit of Measure	List Price
R04.34.304.00	KIT,BROILER PAN,TF-2005,VER.#2	EA	76.80
R04.34.384.00	KIT,BROILER PAN,PERF,TF-1900	EA	89.50
R04.35.095.00	KIT,DRAWER ASSEMBLY,GRMW-.5	EA	338.60
R04.35.112.00	KIT,CONNECTING ROD,GRJW SERIES	EA	57.90
R04.36.005.00	KIT,TANK ASSY-AWD-12 SERIES	EA	469.50
R04.38.231.00	KIT,GR3-33 HEATED GLASS"SHELF"	EA	718.90
R04.38.232.00	KIT,GR3-39 HEATED GLASS"SHELF"	EA	762.10
R04.38.296.01	KIT,GR3-35 HEATED GLASS"SHELF"	EA	718.90
R04.38.297.01	KIT,GR3-41 HEATED GLASS"SHELF"	EA	762.10
R04.40.095.00	KIT,GRCD-2PD CURVE GLASS FRONT	EA	413.20
R04.40.096.00	KIT,GRCD-3PD CURVE GLASS FRONT	EA	475.00
R04.40.106.00	KIT,GRCD-2P CURVED GLASS FRONT	EA	413.20
R04.40.107.00	KIT,GRCD-3P CURVED GLASS FRONT	EA	475.00
R04.40.113.00	KIT,FSD GLASS DOOR ASSEMBLY	EA	219.70
R04.40.115.00	KIT,FSDT GLASS DOOR ASSEMBLY	EA	232.90
R04.40.115.01	KIT,FSDT GLASS DOOR ASSY-BLACK	EA	232.90
R04.40.115.03	KIT,FSDT GLASS DOOR ASSY-RED	EA	232.90
R04.40.115BZ.00	KIT,FSDT GLASS DOOR-BRONZE	EA	244.20
R04.40.127.00	KIT,GRCD-1P CURVED GLASS FRONT	EA	246.30
R04.40.128.00	KIT,GRCD-1PD CURVE GLASS FRONT	EA	246.30
R04.40.129.00	KIT,GRCD-1P DOOR ASSEMBLY	EA	172.40
R04.40.130.00	KIT,GRCD-1PD DOOR ASSEMBLY	EA	186.80
R04.40.138.00	KIT,GRCD-1P MIRROR DOOR ASSY	EA	214.50
R04.40.139.00	KIT,GRCD-1PD MIRROR DOOR ASSY	EA	217.90
R04.40.155.00	KIT,HEATED GLASS FOR GRHW-1SGD	EA	580.70
R04.40.163.00	KIT,CD-3P HEATED GLASS 120V	EA	684.20
R04.40.181MB.00	KIT,GR3-27D HEATED GLASS-MID	EA	601.10
R04.40.181TB.00	KIT,GR3-27 HEATED GLASS	EA	601.10
R04.40.182MB.00	KIT,GR3-33D HEATED GLASS-MID	EA	776.10
R04.40.182TB.00	KIT,GR3-33 HEATED GLASS	EA	776.10
R04.40.183MB.00	KIT,GR3-39D HEATED GLASS-MID	EA	950.00
R04.40.183TB.00	KIT,GR3-39 HEATED GLASS	EA	950.00
R04.40.194.00	KIT,GR3-27 NON-HEATED GLASS	EA	210.20
R04.40.195.00	KIT,GR3-33 NON-HEATED GLASS	EA	271.60
R04.40.196.00	KIT,GR3-39 NON-HEATED GLASS	EA	331.80
R04.40.263.00	KIT,HEATED GLASS-GRHW-1SGD	EA	372.00
R04.40.284.00	KIT,FDWD GLASS DOOR ASSEMBLY	EA	169.60
R04.40.284.01	KIT,FDWD GLASS DOOR,BLACK,ASSY	EA	166.30
R04.40.289.00	KIT,SIDE GLASS & BRKTS-GRCMW-1	EA	101.10
R04.40.323.00	KIT,FSCDH-2PD CURVE GLASS FRT	EA	356.00
R04.40.326.00	KIT,FDWD-12 GLASS DOOR ASSY.	EA	103.20
R04.40.341.00	KIT,GLASS DOOR ASSY-FDWD-MN	EA	109.00
R04.40.344.00	KIT,GLASS,DCSBXXX-3624	EA	103.20
R04.40.357.00	KIT,36"GR3 GLASS SHELF,120V-HW	EA	776.80
R04.40.358.00	KIT,GR3H-48 HEATED GLASS ASSY	EA	779.00
R04.40.371.00	KIT,FDWD MIRROR GLAS DOOR ASSY	EA	186.00
R04.42.194.00	KIT,PAN INSTALL BRACKET-HWB	EA	6.30
R04.42.334.04	KIT,MOUNTING BRACKETS-RHW-4PCS	EA	5.30
R04.42.347.00	KIT,FULL PAN W/ DRAIN	EA	328.00
R04.44.008.00	KIT,BRACKET ASSY FOR TIMER-HQT	EA	20.00



Replacement Parts Price List in Canadian Dollars

January 1, 2012

Item	Description	Unit of Measure	List Price
R04.45.013.00	KIT,WIRE SHELF ASSEMBLY-MDW	EA	72.60
R04.48.024.00	KIT,BRACKET FOR TSTAT BULB-HC8	EA	6.30
R04.48.058.00	KIT,LFST DOOR TROLLEY ASSEM-LH	EA	69.50
R04.48.059.00	KIT,LFST DOOR TROLLEY ASSEM-RH	EA	69.50
R04.48.431.00	KIT,CRUMB TRAY & HDW-FS2HAC-66	EA	223.00
R04.48.466.00	KIT,FS2HAC-XPT PAN SUPPORT	EA	67.00
R05.01.024.00	KIT,CONVEYOR CHAIN LUBE	EA	32.90
R05.02.007.00	KIT, INNER RACE (TRH)	EA	55.30
R05.03.001.00	KIT, CONVEYOR CHAIN TRH	EA	61.80
R05.03.007A.00	KIT,99PITCH CHAIN W/SLIP PLATE	EA	72.40
R05.04.150.00	KIT, PAN STOP PIN	EA	3.90
R05.06.100.00	KIT,DOOR GASKET,FSHC-8-1	EA	66.00
R05.09.021.00	KIT,14 TOOTH SPROCKET W/CLUTCH	EA	76.30
R05.09.022.00	KIT,DRIVEN SPROCKET W/CLUTCH	EA	67.40
R05.30.009.00	KIT,STRAINER ASSY,3CS/FR	EA	51.30
R05.30.011.00	KIT, BLACK PLASTIC FEET	EA	2.60
R05.30.012.00	KIT, 8" HANDLE	EA	28.90
R05.30.029.00	KIT,RUBBER FOOT/BUMPER	EA	2.60
R05.30.050.00	KIT, FILL CUP ASSEMBLY	EA	21.10
R05.30.065.00	KIT,PLASTIC LEG WITH PAD-4"	EA	11.80
R05.30.068.00	KIT,RUBBER FOOT,MDW SERIES	EA	2.10
R05.30.076.00	KIT,DOOR MAGNETS WITH ADHESIVE	EA	44.70
R05.30.081.00	KIT,LEG 1"X1/4 + 3/8" CONVERT	EA	6.60
R05.30.083.00	KIT,2 1/2"(6cm) LEG WITH PAD	EA	13.20
R05.30.086.00	KIT,RUBBER FOOT WITH SCREW	EA	2.60
R05.30.124.00	KIT,LEG ASSY-SRBW SERIES	EA	2.10
R05.30.133.00	KIT,KNOB-CARRIAGE HANDLE ASSY	EA	5.30
R05.30.148.04	KIT,FOOT ASSEMBLIES-(4 PCS.)	EA	4.20
R05.30.156.00	KIT,STRIKER PLATE,FS2HAC-66	EA	5.00
X02.01.238.00	CTRL BD RHW-01,2 220V W/BEEP	EA	104.20
X02.01.241.00	TEMP SENSOR,P-EC-405-007-0	EA	26.30
X02.01.243.00	TEMP SENSOR,P-EC-405-005-0	EA	31.60
X02.01.245.00	WATER PROBE,P-EL-170-018-0	EA	24.20
X02.01.246.00	MAIN BD,FLOM-18,P-EC-400-W10-0	EA	185.30
X02.01.249.00	FLOAT SWITCH,P-EL-160-S02-0	EA	131.60
X02.01.250.00	CONTROL RELAY,P-EL-010-J16-0	EA	31.60
X02.01.255.00	CONTROL BOARD,QTS-1	EA	565.90
X02.01.256.00	BOARD,TRIAC,QTS-1	EA	628.40
X02.01.258.00	PCB ASSY,TPT-208	EA	17.10
X02.01.265.00	POWER CONTROL BOARD,STM-4G	EA	63.20
X02.01.276.00	CONTRL BOARD,P-EC-400-W15-0	EA	360.00
X02.01.279.00	DISPLAY BOARD,P-EC-400-F40-0	EA	65.30
X02.01.280.00	CORD GRIP,TPU	EA	1.10
X02.01.281.00	TIMER SWITCH,TPU	EA	31.60
X02.01.282.00	PCB ASSY,TPT-230-4	EA	21.10
X02.01.293.00	PCB,TPT-208 R	EA	17.00
X02.01.303.00	PCB,FM2SS,DISPLAY BOARD	EA	12.00
X02.01.304.00	PCB,FM2SS,POWER	EA	19.00
X02.01.305.00	PROBE,FM2SS,TEMP CONTROL	EA	2.00
X02.01.307.00	TOUCH PANEL,W/RIBBN,IRX-3000	EA	176.00



Replacement Parts Price List in Canadian Dollars

January 1, 2012

Item	Description	Unit of Measure	List Price
X02.01.308.00	TOUCH PANEL,W/RIBBN,IR2-3000	EA	372.00
X02.01.309.00	TOUCH PANEL,W/RIBBN,IRG15-3000	EA	176.00
X02.01.310.00	GENERATOR BOARD,IR1-3000	EA	417.00
X02.01.312.00	GENERATOR BOARD,IRG15-3000	EA	417.00
X02.01.313.00	GENERATOR BOARD,IRBR2-6200	EA	471.00
X02.01.315.00	PCB ASSY,IRBR2-6200	EA	183.00
X02.01.329.00	PROBE,WATERLEVEL,FM2SS	EA	4.00
X02.01.330.00	PCB,FM2SS POWER	EA	20.00
X02.01.331.00	TOUCH PANEL,W/RIBBON,IRW1-3000	EA	176.00
X02.01.332.00	SECURITY BOARD,IRW1-3000	EA	161.00
X02.05.595.00	HEAT ELEMENT RHW-01,2 220V	EA	69.50
X02.05.608.00	2000W 240V BLKT,P-HA-CW2-200-0	EA	68.40
X02.05.619.00	350W 220V WATER,P-HW-035-220	EA	73.70
X02.05.620.00	1000W 220V AIR,P-HA-F02-100	EA	88.40
X02.05.629.00	110W 115V WATER ELE, FSHC-17W	EA	183.20
X02.05.653.00	HEATING ELEM,WALLS,STM-4G	EA	43.20
X02.05.671.00	110W 220V WATER ELE, FSHC-17W	EA	183.20
X02.06.503.00	HEAT ELEM,2.85K,P-HW-285-224-0	EA	128.40
X02.06.504.00	ELEM,1KW 220V,P-HW-100-220-0	EA	104.20
X02.06.505.00	ELEM,2000W,230V,FM2SS,RING	EA	6.00
X02.06.506.00	ELEM,600W,230V,FM2SS,CENTER	EA	11.00
X02.08.622.00	1500W 220V AIR EL FSHC-17W	EA	175.80
X02.08.628.00	500W,230V,ELEMENT,GMFFL	EA	33.70
X02.09.262.00	TOP HEATING ELEM TM-5H 120V	EA	71.60
X02.09.264.00	BOTTOM HEAT ELEM TM-5H 120V	EA	71.60
X02.09.273.00	HEAT ELEM,TPT-208,104V,337W	EA	12.60
X02.09.274.00	HEAT ELEM,TPT-240,120V,337W	EA	12.60
X02.09.275.00	HEATING ELEM ASSY,TPT-230-4	EA	12.00
X02.12.084.00	FAN,GUARD TM	EA	5.30
X02.12.085.00	FAN,CIRCULATING 120V TM	EA	66.30
X02.12.092.00	CIRC MOTOR,220V,P-BL-200-120-0	EA	66.30
X02.12.093.00	COOLING FAN	EA	95.80
X02.12.099.00	FAN BLADE,BLOW MTR,FSHC-12/17	EA	28.40
X02.12.103.00	FAN MOTOR,230V,STM-4G	EA	19.00
X02.12.104.00	FAN IMPELLER,STM-4G	EA	3.20
X02.12.115.00	EXHAUST FAN,IRX SERIES	EA	77.00
X02.12.116.00	INTAKE FAN,IRG15-3000	EA	67.00
X02.13.331.00	RHEOSTAT 80 OHM 120V TM-LEADS	EA	80.00
X02.13.332.00	INTERFERENCE FILTER,QTS-1	EA	15.00
X02.13.334.00	POTENTIOMETER,COLOR,TPT-120	EA	5.30
X02.13.335.00	POTENTIOMETER,COLOR,TPT-208	EA	5.30
X02.13.342.00	TPT-120 R,PCB,RH	EA	19.00
X02.13.343.00	TPT-120 R,PCB,LH	EA	19.00
X02.15.052.00	T-BLOCK 3P 15 AMP TM	EA	5.30
X02.15.053.00	T-BLOCK,3P,FSHC-12/17	EA	38.90
X02.15.054.00	T-BLOCK,QTS	EA	30.50
X02.16.129.00	HI LIMIT/SENSOR RHW-01,2 220V	EA	93.70
X02.16.132.00	HI LIMIT ASSY,RHW-01,2	EA	19.00
X02.16.133.00	HI LIM,RCTHW-1E,P-EC-405-012-0	EA	19.00
X02.16.134.00	HI LIM CONTROL,P-EL-060-140-0	EA	55.80





Replacement Parts Price List in Canadian Dollars

January 1, 2012

Item	Description	Unit of Measure	List Price
X02.16.136.00	TSTAT AIR & HUM,P-EL-050-085-0	EA	41.10
X02.16.137.00	TEMP IND 220V,P-EL-100-001-0	EA	66.30
X02.16.138.00	HIGH LIMIT SAFETY	EA	15.00
X02.16.142.00	T-STAT W/BULB,90-190F,FSHC-17W	EA	169.50
X02.16.145.00	THERMOSTAT,HI-LIMIT,QTS-1	EA	126.20
X02.16.147.00	THERMAL DISC,150C,STM-4G	EA	4.20
X02.16.148.00	THERMAL FUSE,STM-4G	EA	4.20
X02.16.155.00	TSTAT,LIMIT,MECH SURF,135C,MAN	EA	3.00
X02.16.156.00	TSTAT,LIMIT,MECH SURF,192C	EA	4.00
X02.16.159.00	SENSOR,IRG15-3000	EA	81.00
X02.17.070.00	TRANS,220-9.5V,P-LT-330-W22-0	EA	52.60
X02.17.071.00	TRANSFORMER,QTS-1	EA	35.30
X02.18.156.00	CORD,CONTROL,RHW	EA	58.90
X02.18.170.00	CORD,CONTROL,RCTHW	EA	47.40
X02.18.187.00	CORD,UK-BS,POWER,RHW-01,2	EA	44.20
X02.18.188.00	SOCKET,UK-BS,POWER,RHW-01,2	EA	3.20
X02.18.208.00	SERVICE,POWER CORD,FMSS-7	EA	15.00
X02.18.217.00	CORD,RCTHW,P-EL-300-BS1-3	EA	45.30
X02.18.222.00	CORD,20A 125V,SJTOW,14/3,HC-17	EA	110.50
X02.18.226.00	CORD,DETACHABLE,SCHUKO,STM-4G	EA	8.40
X02.18.231.00	CORD,DETACHABLE,BS-1363,STM-4G	EA	10.50
X02.18.254.00	CORD,15A 125V,SJTOW,14/3,HC-17	EA	68.40
X02.18.256.00	CORD,15A 250V,SJTOW,14/3,HC-17	EA	68.40
X02.18.364.00	POWER CORD,IRX SERIES,BS1363	EA	95.00
X02.18.365.00	POWER CORD,IRBR2-6200,NO PLUG	EA	95.00
X02.18.395.00	POWER CORD,IRG15-3000,BS1363	EA	95.00
X02.19.175.00	INDICATOR LIGHT GREEN 220V TM	EA	12.60
X02.19.176.00	INDICATOR LIGHT RED 220V TM	EA	12.60
X02.19.179.00	ON/OFF SWITCH,P-EL-080-15A-3	EA	9.50
X02.19.180.00	ON/OFF SWITCH,P-EL-080-15A-1	EA	9.50
X02.19.181.00	IN LAMP 220 RED,P-LT-100-001-0	EA	12.60
X02.19.182.00	IN LAMP 220 GRN,P-LT-100-R00-0	EA	12.60
X02.19.184.00	IN LAMP 120 RED,P-	EA	12.00
X02.19.185.00	IN LAMP 120 GRN,P-	EA	12.00
X02.19.186.00	DOOR SWITCH,P-	EA	10.50
X02.19.187.00	SWITCH INF HUMID,120V,FSHC-17W	EA	56.80
X02.19.188.00	SWITCH ROC SPST 20A 125-277ILL	EA	63.20
X02.19.189.00	ENCODER SWITCH,TIME/TEMP,QTS1	EA	107.40
X02.19.190.00	SWITCH,ON/OFF,QTS-1	EA	63.70
X02.19.191.00	MICRO SWITCH,QTS-1	EA	26.20
X02.19.193.00	SWITCH,DPDT,MICRO	EA	22.10
X02.19.195.00	SWITCH,ROCKER,GMFFL	EA	10.50
X02.19.203.00	INDICATOR LAMP,TPU	EA	3.20
X02.19.204.00	SWITCH,TPU-230-4,2 POSITION	EA	5.30
X02.19.205.00	SWITCH,TPU-230-6,2 POSITION	EA	5.30
X02.19.207.00	SW,INF HUMID,220-240V,FSHC-17W	EA	94.70
X02.19.210.00	SWITCH,SELECTOR,TPT-R	EA	8.40
X02.19.217.00	ENCODER,IRBR-6200	EA	285.00
X02.20.338.00	CORD STRAIN RELIEF BUSHING,RHW	EA	1.10
X02.20.339.00	BUSHING DISP,P-PZ-001-001-0	EA	1.10



Replacement Parts Price List in Canadian Dollars

January 1, 2012

Item	Description	Unit of Measure	List Price
X02.20.342.00	SOLENOID,120VAC,TPT	EA	31.60
X02.20.343.00	PLUNGER,SOLENOID,TPT-120	EA	4.20
X02.20.344.00	PLUNGER,SOLENOID,TPT-208/240	EA	4.20
X02.20.390.00	CORD GRIP,STRT,.,309-.430,FM2SS	EA	1.00
X02.20.391.00	CONNECTOR CABLE,IRBR-6200 LONG	EA	103.00
X02.20.400.00	CONNECTOR CABL,IRBR-6200 SHORT	EA	70.00
X02.22.014.00	HEATING ELEM,1500W,230V,QTS-1	EA	263.70
X02.22.015.00	HEATING ELEM,1377W/1500w	EA	244.20
X02.22.016.00	COIL,IRW-3000	EA	398.00
X02.22.017.00	COIL,IR2-3000,FRONT	EA	259.00
X02.22.018.00	COIL,IR2-3000,REAR	EA	259.00
X02.22.019.00	COIL,IRG15-3000	EA	410.00
X02.22.020.00	COIL,IRBR2-6200	EA	740.00
X02.30.102.00	LIGHT SOCKET,P-LT-600-138-0	EA	8.40
X02.30.103.00	LIGHT BULB,220V,P-LT-220-060-2	EA	7.40
X02.30.114.00	BULB,60W,230V,GMFFL,SERVICE	EA	7.40
X02.40.046.00	DIODE,TM	EA	3.20
X03.02.043.00	VALVE,DRN,RCTHW,P-PL-E12-090-0	EA	52.60
X03.02.044.00	ELB,DRAIN,RCTHW,P-PU-025-019-0	EA	23.20
X03.02.045.00	DELIME FILL CAP,P-PZ-016-010-0	EA	28.40
X03.02.046.00	SOLENOID VALVE,P-EL-200-C34-0	EA	87.40
X03.02.047.00	DISPENSE VALVE,P-EL-210-C34-0	EA	70.50
X03.02.050.00	WATER TANK OUT,H-HA-FLO-002-0	EA	16.00
X03.02.051.00	FILL SOLENOID,P-EL-210-C12-0	EA	87.40
X03.02.059.00	DISPENSE VALVE,HDCM05-01	EA	8.40
X03.02.061.00	DISPENSE VALVE,FLOM-18	EA	67.40
X03.02.062.00	DISPENSE VALVE,FLOM-40	EA	70.50
X03.02.066.00	DISPENSE VALVE,FLOM-18,40,80	EA	30.50
X03.02.079.00	FAUCET,FM2SS,DISPENSE	EA	35.00
X03.40.101.00	WATER REL FITNG,P-PZ-016-009-0	EA	7.40
X03.40.102.00	PIPE NIP,DISPEN,P-EL-390-001-0	EA	7.40
X04.05.434.00	TOP COVER W/INSUL TM-10H	EA	80.00
X04.05.435.00	TOP COVER W/INSUL TM-5H	EA	69.50
X04.05.436.00	SIDE PANEL,LH,TM	EA	51.60
X04.05.437.00	SIDE PANEL,RH,TM	EA	51.60
X04.05.438.00	REAR DISCHARGE TRAY TM-10H	EA	46.30
X04.05.439.00	REAR DISCHARGE TRAY TM-5H	EA	38.90
X04.05.440.00	DISCHARGE VANE TM-5H	EA	14.00
X04.05.441.00	DISCHARGE VANE TM-10H	EA	18.00
X04.05.446.00	COOLING FAN COVER TM-10H	EA	25.30
X04.05.449.00	BRACKET,HEATING ELEMENT,TM	EA	6.30
X04.05.526.00	LOW REFL,TM-5,H-TQ-010-031-1	EA	19.00
X04.05.528.00	LOW REFL,TM-10,H-TQ-010-031-0	EA	22.10
X04.05.546.00	CARRIAGE HANDLE ASSY,TPT-A	EA	19.00
X04.05.547.00	CRUMB TRAY ASSY,TPT-A	EA	7.40
X04.05.548.00	CARRIAGE HANDLE ASSY,TPT-208	EA	22.10
X04.05.549.00	CRUMB TRAY ASSY,TPT-208	EA	7.40
X04.05.550.00	DAMPER ASSY,TPT-208	EA	3.20
X04.05.554.00	PANEL,SIDE,TPU	EA	28.40
X04.05.556.00	COVER,BOTTOM,TPU-230-4	EA	6.30



Replacement Parts Price List in Canadian Dollars

January 1, 2012

Item	Description	Unit of Measure	List Price
X04.05.557.00	CRUMB TRAY,TPU-230-4	EA	8.40
X04.05.558.00	JACKET,TPU-230-4	EA	47.40
X04.05.559.00	COVER,BOTTOM,TPU-230-6	EA	9.50
X04.05.560.00	CRUMB TRAY,TPU-230-6	EA	7.40
X04.05.684.00	CARRIAGE HANDLE ASSY,TPT-120 R	EA	8.00
X04.05.685.00	CARRIAGE HANDLE ASSY,TPT-208 R	EA	8.00
X04.09.733.00	GRILL PLATE,QTS-1	EA	49.50
X04.09.734.00	DRIP TRAY,QTS-1	EA	163.70
X04.17.1050.00	FRONT CTRL PNL,H-LE-010-005-0	EA	144.20
X04.17.1051.00	TOP COVER,H-LE-010-007-0	EA	69.50
X04.17.1052.00	DOOR HANDLE,P-MA-040-C09-0	EA	7.40
X04.17.1053.00	WATER TANK,H-LE-010-010-0	EA	92.60
X04.17.1054.00	4-TIER CICLE PAN RACK	EA	92.60
X04.17.1055.00	RACK COUPLING	EA	22.10
X04.17.1056.00	4-SHELF MULTI PURPOSE RACK	EA	178.90
X04.17.1057.00	CHAMBER COVER	EA	113.70
X04.17.1138.00	FLVM GLASS DOOR H-LE-010-011-0	EA	178.90
X04.17.1164.00	METAL TRIM CHANNEL,SIDE GLASS	EA	80.00
X04.17.1186.00	PAN SLIDE,FSHC-12/17	EA	48.40
X04.17.1277.00	HEAT TUNNEL COVER,FSHC-12/17	EA	208.40
X04.17.1382.00	CASTER,5" RIGID,FSHC-12,-17	EA	92.60
X04.17.1383.00	CASTER,5" SWIVEL,W/BRK,HC-12	EA	92.60
X04.19.1001.00	POT,11qt,RHW-01,2	EA	137.90
X04.19.1003.00	LID,11qt,RHW-01,2	EA	55.80
X04.19.1004.00	ENCLOSURE,RHW-01	EA	443.20
X04.19.1005.00	BOTTOM COVER,RHW-01	EA	14.00
X04.19.1006.00	ENCLOSURE,RHW-02	EA	627.40
X04.19.1007.00	BOTTOM COVER,RHW-02	EA	33.70
X04.19.1018.00	RHW BAMBOO STEAMER KIT	EA	44.20
X04.19.1037.00	RHW STEAMER PLATE	EA	82.10
X04.19.1064.00	BOX COVER,RHW-XB	EA	9.50
X04.19.1072.00	RCTHW SOUP KETTLE ACCY	EA	154.70
X04.19.1073.00	RCTHW SAUCE WARMER ACCY	EA	158.90
X04.19.1074.00	RCTHW STEAM PLATE ACCY	EA	128.40
X04.19.1075.00	RCTHW PASTA COOKER ACCY	EA	223.20
X04.19.1088.00	MOUNTING BRACKET,RHW-XB	EA	1.10
X04.19.1089.00	ENCLOSURE,RCTHW-1	EA	255.80
X04.19.1091.00	BOTTOM COVER,RCTHW-1	EA	41.10
X04.19.1092.00	BOTTOM COVER,RCTHW-1B	EA	41.10
X04.19.1094.00	RCTHW NOODLE LADLE,5" ACCY	EA	17.00
X04.19.1095.00	RCTHW 4QT SAUCE POT W/LID ACCY	EA	77.90
X04.19.1096.00	RCTHW 7QT SOUP POT W/LID ACCY	EA	109.50
X04.19.1098.00	POT,11QT W/HANDLES	EA	156.80
X04.19.1120.00	INSULATED PNL,METAL,RND,RHW	EA	9.50
X04.19.1121.00	WATER PAN,RCTHW,P-MA-380-001-0	EA	258.90
X04.19.1122.00	BRKT,SENSOR,RCT,H-BM-010-022-0	EA	11.60
X04.19.1123.00	PNL CVR,RCTHW,H-BM-010-023-0	EA	66.30
X04.19.1124.00	ENCLOSURE,RCTHW,H-BM-010-024-0	EA	242.10
X04.19.1125.00	BOTT CVR,RCTHW,H-BM-010-025-0	EA	43.20
X04.19.1152.00	LID W/ PLAST KNOB,11qt,RHW-01	EA	69.50



Replacement Parts Price List in Canadian Dollars

January 1, 2012

Item	Description	Unit of Measure	List Price
X04.19.1195.00	RCTHW NOODLE LADLE,5" ACCY	EA	24.20
X04.19.1329.00	RCTHW 5 HOLE STEAMER PLATE ACC	EA	205.30
X04.20.085.00	PLATE DETECTION BAR,QTS-1	EA	48.90
X04.20.086.00	BRACKET,MOVING PANEL,QTS-1	EA	5.30
X04.26.390.00	HINGE EDGEMOUNT,FSHC-12/17	EA	67.40
X04.26.391.00	LATCH,MAGNETIC,FSHC-12/17	EA	152.60
X04.34.393.00	HOOD ASSY,QTS-1	EA	336.80
X04.34.423.00	Wall Mounting Bracket,QTS	EA	163.20
X04.34.455.00	FILTER,SS,IRX SERIES	EA	63.00
X04.34.456.00	SS FILTER AND SUPTS,IRG15-3000	EA	136.00
X04.34.457.00	FILTER SUPPORT,REAR,IRG15-3000	EA	63.00
X04.34.458.00	FILTER SUPPORT,IRBR2-6200	EA	63.00
X04.36.003.00	TOP COVER,H-IM-020-001-H	EA	141.10
X04.36.004.00	TANK COVER,H-IM-020-002-H	EA	92.60
X04.36.020.00	JACKET ASSY,H-IM-020-003-H	EA	293.70
X04.36.021.00	SOLENOID BRKT,H-IM-020-004-H	EA	15.00
X04.36.022.00	FRONT COVER,H-IM-020-005-H	EA	72.60
X04.36.023.00	SHELF,H-IM-020-006-H	EA	66.30
X04.36.024.00	FRONT CTRL PNL,H-IM-020-007-H	EA	97.90
X04.36.025.00	DRIP TRAY,H-IM-020-008-H	EA	74.70
X04.36.026.00	WATER TANK,H-IM-020-009-H	EA	438.90
X04.36.027.00	FRONT COVER,P-PZ-016-007-0	EA	49.50
X04.36.028.00	JACKET,SS,H-HA-FLO-001-0	EA	158.90
X04.36.029.00	BRKT,TANK,H-HA-FLO-003-0	EA	4.20
X04.36.030.00	WATER TANK,FRT,P-MA-860-R01-0	EA	221.10
X04.36.031.00	WATER TANK,REAR,P-MA-860-L01-0	EA	221.10
X04.36.032.00	BRKT,CONTROLS,H-HA-FLO-004-0	EA	4.20
X04.36.033.00	BACK PANEL,H-HA-FLO-005-0	EA	32.60
X04.36.034.00	MNT BRKT,H-HA-FLO-009-0	EA	4.20
X04.36.035.00	CTRL PNL BOTTOM,H-HA-FLO-008-0	EA	48.40
X04.36.036.00	DRIP TRAY ASSY,P-PZ-016-006-0	EA	46.30
X04.36.040.00	COVER ASSY,FM2SS	EA	30.50
X04.36.041.00	FILTER,BASKET,COVER,FM2SS	EA	28.40
X04.36.042.00	PUMP ASSY,FMSS,BREW RISER TUBE	EA	7.50
X04.36.043.00	SERVICE,BODY ASSY,FMSS-7	EA	177.90
X04.36.044.00	SERVICE,HANDLE ASSY,FMSS-7	EA	6.50
X04.36.045.00	SERVICE,DECO ASSY,FMSS-7	EA	6.30
X04.36.046.00	SERVICE,GLASS TUBE ASSY,FMSS-7	EA	6.30
X04.36.047.00	SERVICE,FAUCET ASSY,FMSS-7	EA	10.50
X04.36.048.00	SERVICE,HEATER ASSY,FMSS-7	EA	37.90
X04.36.049.00	SERVICE,BI-METAL ASSY,FMSS-7	EA	7.50
X04.36.050.00	SERVICE,BASE ASSY,FMSS-7	EA	15.00
X04.36.051.00	SERVICE,FOOT ASSY,FMSS-7	EA	1.10
X04.36.052.00	SERVICE,PCB ASSY,FMSS-7	EA	47.40
X04.36.053.00	SERVICE,CONTROL PNL,FMSS-7	EA	2.20
X04.36.054.00	SIGHT GLASS TUBE KIT,FM2SS	EA	2.00
X04.36.055.00	BASE,FM2SS	EA	8.00
X04.36.056.00	CONTROL PANEL,FM2SS	EA	4.00
X04.36.058.00	VENT CAP,SIGHT GLASS,FM2SS	EA	1.00
X04.36.059.00	PANEL,SIGHT GLASS DECO,FM2SS	EA	6.00



Replacement Parts Price List in Canadian Dollars

January 1, 2012

Item	Description	Unit of Measure	List Price
X04.37.129.00	WIRE GUARD,GMFFL	EA	10.00
X04.40.255.00	GLASS SIDE PNL,P-GL-HC0-503-0	EA	52.60
X04.40.256.00	GLASS DOOR PNL,P-GL-HC0-515-0	EA	43.20
X04.40.288.00	TEMPERED GLASS,21.25x12,QTS-1	EA	188.70
X04.48.029.00	FSHC-12/17 WATER PAN,LONG	EA	113.70
X04.48.031.00	FSHC-12/17 DRAIN STOPPER	EA	22.10
X04.48.053.00	FSHC-12/17 WATER PAN,SHORT	EA	65.30
X05.02.024.00	BEARING ASSEMBLY TM	EA	15.00
X05.02.025.00	BUSHING,PLASTIC,COUNTRWT,QTS-1	EA	12.50
X05.02.026.00	BUSHING,PLASTIC,MOV PNL,QTS-1	EA	4.60
X05.02.027.00	RET RING,STEEL,GUIDE ROD,QTS-1	EA	3.40
X05.02.028.00	SHAFT BUSHING,TEFLON	EA	2.10
X05.03.040.00	DRIVE CHAIN,TM-5H	EA	20.00
X05.03.044.00	DRIVE CHAIN,TM-10H	EA	20.00
X05.03.049.00	DRIVE CHAIN,TM,14-16 TOOTH	EA	21.10
X05.03.052.00	COUNTER WEIGHT STRAP	EA	7.40
X05.04.488.00	THUMB SCREW,TM	EA	3.20
X05.04.493.00	LEG FASTENER,RHW-01,2	EA	2.10
X05.04.529.00	TANK STAND OFF,H-HA-FLO-006-0	EA	11.60
X05.04.530.00	TANK SUPPORT,H-HA-FLO-007-0	EA	15.00
X05.04.531.00	RACK CONNECTOR,P-MA-460-005-0	EA	8.40
X05.06.095.00	DOOR GASKET,FSHC-12,17	FT	11.60
X05.07.027.00	COUNTER WEIGHT SHAFT,QTS-1	EA	11.40
X05.07.028.00	COUNTER WEIGHT GUIDE ROD,QTS-1	EA	4.60
X05.07.029.00	MOVING PANEL GUIDE ROD,QTS-1	EA	71.60
X05.08.013.00	UPPER INSULATION SUPPORT,QTS-1	EA	5.30
X05.08.015.00	LATCH SPRING,TPT	EA	2.10
X05.08.016.00	CARRIAGE SPRING,0.7 X 9 X 36.5	EA	2.10
X05.08.017.00	DAMPING SPRING,0.6 X 8 X 18.5	EA	2.10
X05.09.052.00	SPROCKET,MOTOR,TM-5H-24 TOOTH	EA	15.00
X05.09.053.00	SPROCKET,MOTOR,TM-10H-24 TOOTH	EA	15.00
X05.09.054.00	SPROCKET,CONVEYOR,TM-5H	EA	17.00
X05.09.057.00	SPROCKET,MOTOR,TM,14 TOOTH	EA	15.00
X05.09.058.00	ALUMINUM PULLEY,QTS-1	EA	30.70
X05.30.094.00	LEGS,SUPPORT,RHW-01,2	EA	2.10
X05.30.097.00	LEG,1.25",P-MA-240-114-0	EA	5.30
X05.30.098.00	CONTROL KNOB,P-NA-401-065-0	EA	9.50
X05.30.099.00	DOOR MAGNET ASSEMBLY	EA	41.10
X05.30.100.00	DRAIN CAP	EA	22.10
X05.30.102.00	KNOB,TOP COVER,HDCM01-03	EA	3.20
X05.30.107.00	FOOT,FMSS-7,HDCM09-05	EA	5.30
X05.30.108.00	Oval HANDLE,QTS-1	EA	48.90
X05.30.109.00	KNOB,ON/OFF,QTS-1	EA	5.70
X05.30.114.00	RUBBER FOOT,TPT-A	EA	1.10
X05.30.116.00	FOOT ASSY,TPT-208	EA	2.10
X05.30.117.00	ADJUSTABLE UNIT FEET,STM-4G	EA	6.30
X05.30.120.00	FOOT,QTS-1	EA	5.30
X05.30.121.00	HANDLE,TPU BREAD LIFTER	EA	5.30
X05.30.122.00	LEG,TPU	EA	1.10
X05.30.123.00	KNOB,TPU,COLOR CONTROL	EA	5.30



Replacement Parts Price List in Canadian Dollars

January 1, 2012

Item	Description	Unit of Measure	List Price
X05.30.125.00	TPT HANDLE	EA	7.00
X05.30.128.00	KNOB,TPU,SLOT SELECTOR	EA	5.30
X05.30.141.00	KNOB,TPT-R,COLOR CONTROL	EA	5.30
X05.30.159.00	FOOT,RUBBER,FM2SS,(4)	EA	1.00
X05.30.160.00	HANDLE W/COVER LATCH,FM2SS	EA	3.00
X05.30.161.00	FOOT,RUBBER,IR SERIES	EA	52.00
X05.30.162.00	FOOT,ADJUSTABLE,IRG15-3000	EA	52.00
X05.30.163.00	KNOB,CONTROL,IRBR2-6200	EA	45.00
X07.01.318.00	CONTROL DECAL,TPU-230-4	EA	5.30
X07.01.319.00	CONTROL DECAL,TPU-230-6	EA	6.30
X07.01.348.00	CONTROL OVERLAY,FM2SS	EA	4.00
X07.01.357.00	CONTROL PANEL,TPT-120R	EA	14.00
X07.01.358.00	CONTROL PANEL,TPT-208,-240	EA	15.00
X07.03.465.00	DECAL,CONTROL PLATE,TM-5H	EA	8.40
X07.03.466.00	DECAL,CONTROL PLATE,TM-10H	EA	11.60
X07.03.469.00	DECAL,RHW-01,2	EA	8.40
X07.03.512.00	DECAL,CTRL,RCTHW,P-NA-050-BM1	EA	25.30
X07.03.515.00	CONTROL DECAL,P-NA-121-040-H	EA	28.40
X07.03.516.00	CONTROL DECAL,P-NA-121-010-0	EA	12.60
X07.03.546.00	PANEL DECAL,QTS-1	EA	88.70
X07.03.566.00	SERVICE,OVERLAY,FMSS-7	EA	3.30
01.05.003.00	PMG-60 SS TANK ASSY	EA	719.00
01.05.005.00	PMG-100,200 SS TANK ASSY	EA	719.00
02.01.002.00	208/240V LWCO RELAY,SERVICE	EA	292.10
02.01.004.00	REL,CUBE,120AC,3PDT,10RES	EA	198.70
02.01.007.00	REL,OPEN,240AC,SPDT,30RES	EA	78.90
02.01.008.00	REL,OPEN,208/240AC,DPST,30RES	EA	61.80
02.01.010.00	REL,OPEN,120AC,2PST,30RES	EA	80.30
02.01.015.00	CON,STD,110/120AC,3P,50RES	EA	89.50
02.01.016.00	CON,STD,208/240AC,3P,50RES	EA	89.50
02.01.017.00	CON,STD,110/120AC,4P,50RES	EA	107.90
02.01.018.00	CON,STD,208/240AC,4P,50RES	EA	107.90
02.01.019.00	CON,AUXILARY INTERLOCK	EA	38.20
02.01.028.00	REL,CUBE,120AC,SPDTLATC,10RES	EA	61.00
02.01.031.00	REL,CUBE,120AC,3PDT,10RES	EA	93.40
02.01.039.00	REL,CUBE,24AC,DPDT,13RES	EA	47.40
02.01.040.00	CON,STD,110/120AC,2P,50RES	EA	82.90
02.01.043.00	REL,CUBE,240AC,SPDTPLATC,10RES	EA	156.60
02.01.049.00	T-STAT CONT SS 24VDC OUT FAR	EA	275.00
02.01.056.00	T-STAT PROBE 3-CON 36" FAR	EA	34.20
02.01.057.00	T-STAT PROBE 3-CON 48" FAR	EA	35.80
02.01.061.00	REL,MICRO,24DC,SPDT,10RES	EA	36.80
02.01.067.00	T-STAT PROBE 3-WIRE 77" FAR	EA	36.80
02.01.073.00	T-STAT CONT SS DUAL OUTPUT	EA	401.30
02.01.078.00	T-STAT PROBE RTD3 36" CEL	EA	34.20
02.01.079.00	T-STAT PROBE 3-CON 48" CEL	EA	35.80
02.01.080.00	T-STAT PROBE 3-CON 77" CEL	EA	38.20
02.01.083.00	LIQUID LEVEL CONTROL FR-LC	EA	257.90
02.01.085.00	T-STAT PROBE SS RTD2 100OHM@32	EA	76.80
02.01.086.00	T-STAT CONT SS DUAL IN/OUT FAR	EA	460.50



Replacement Parts Price List in Canadian Dollars

January 1, 2012

Item	Description	Unit of Measure	List Price
02.01.087.00	T-STAT CONT SS DUAL IN/OUT C	EA	460.50
02.01.088.00	REL,MINI,120AC,SPDT,30RES	EA	23.20
02.01.097.00	REL,CUBE,120AC,DPDT,35RES	EA	76.30
02.01.098.00	REL,CUBE,208/240AC,DPDT,35RES	EA	75.80
02.01.104.00	REL,MINI,24DC,DPDT,30RES	EA	55.30
02.01.105.00	REL,MINI,240VAC,SPDT,30RES	EA	26.30
02.01.108.00	POTENTIOMETER W/7" LEADS	EA	31.60
02.01.113.00	POT W/7" LEADS METAL CASE	EA	38.20
02.01.116.00	REL,MINI,24VAC,DPDT,10RES	EA	35.80
02.01.117.00	POT W/36" LEADS METAL CASE	EA	44.70
02.01.121.00	LEVEL CONTROL 208/240V W/TD	EA	150.00
02.01.122.00	PROBE FOR LEVEL CONTROL	EA	52.60
02.01.144.00	T-STAT PROBE NiCAD 48" FAR	EA	42.10
02.01.145.00	T-STAT PROBE NiCAD 60"	EA	47.40
02.01.146.00	T-STAT PROBE NiCAD 77" FAHR	EA	48.70
02.01.149.00	REL,CUBE,240VAC,3PST,30RES	EA	88.40
02.01.167.00	CON,STD,24VAC,3P,50RES	EA	60.00
02.01.168.00	CON,STD,110/120AC,3P,50RES MC	EA	100.00
02.01.169.00	TF HORIZ DISPLAY BRD	EA	111.40
02.01.171.00	TF MAIN BOARD 3 TRIACS	EA	426.30
02.01.177.00	TIMER,VERTICAL BOARD LAYOUT	EA	142.10
02.01.180.00	REL,MINI,220VAC,SPDT,30RES	EA	51.30
02.01.187.00	REL,CUBE,100AC,SPDTLATC,10RES	EA	156.60
02.01.188.00	REL,MINI,208V,SPDT,30RES	EA	42.10
02.01.190.00	TF MAIN BOARD 2 TRIACS	EA	478.60
02.01.192.00	PROBE,100 OHM,RTD	EA	57.90
02.01.194.00	GFCI-7590E,120V,20A	EA	48.90
02.01.203.00	PROBE,TEMP,10K NTC THERMISTOR	EA	55.30
02.01.204.00	PROBE,TEMP/LVL,10K THERMISTER	EA	58.90
02.01.207.00	TF MAIN BOARD 1 UPPER,1 LOWER	EA	539.50
02.01.208.00	T-STAT,W/PORT,4 CHANNEL 24V	EA	446.30
02.01.216.00	TEMP/LVL 1K@25C PTC THER PROBE	EA	52.60
02.01.217.00	INTERLOCK SW,HARTLAND CONTACT	EA	38.20
02.01.218.00	CON,STD,120AC,3P,50RES	EA	92.10
02.01.221.00	GFCI-8895E,120V,80A	EA	115.50
02.01.222A.00	CONTROL,ELECTRONIC,120V IN	EA	231.80
02.01.224.00	REL,CUBE,120VAC,3PST,30RES	EA	64.20
02.01.226.00	TF CONTROL 10 PROG VERT BOARD	EA	224.00
02.01.236.00	REL,MINI,120AC,SPDT,15RES	EA	36.80
02.01.238.00	PCB,HEATER WELL CONTROL	EA	99.00
02.01.260.00	BEZEL FOR 02.01.259.00	EA	5.30
02.01.261.00	PROBE,48",FOR 02.01.259.00	EA	27.40
02.01.262.00	CON,STD,24VAC,4P,50RES	EA	68.40
02.01.273.00	T-STAT,W/PORT,DRY WMR 24V,195F	EA	306.00
02.01.286.00	PROBE,118",FOR 02.01.259.00	EA	88.40
02.01.288.00	ELECTRONIC CONTROL,REFRIG	EA	254.70
02.01.295.00	CONTROL,ELEC,THERM,240V,F	EA	130.00
02.01.296.00	PROBE,SS BUTTON	EA	89.00
02.01.298.00	CONTROL,ELEC,INF,230V,30A	EA	146.00
02.01.300.00	POT W/7" LEADS,CW INCREASING	EA	42.00



Replacement Parts Price List in Canadian Dollars

January 1, 2012

Item	Description	Unit of Measure	List Price
02.01.326.00	POTENTIOMETER,2M OHM,7" LEADS	EA	31.00
02.01.340.00	CONTROL BRD ASSY,12V AC TIMER	EA	949.00
02.01.358.00	DIELECTRIC GREASE,,28 OZ PACKG	EA	9.00
02.03.004.00	FUSE HOLDER FOR AGC FUSE	EA	10.50
02.03.006.00	FUSE 1A 250V AC	EA	7.00
02.03.022.00	FUSE BLOCK 15A 480V 2P-G CLASS	EA	20.00
02.03.023.00	FUSE BLOCK 30A 600V 2P-T CLASS	EA	35.80
02.03.068.00	FUSE BLOCK 15A 480V 1P-G CLASS	EA	24.00
02.05.010A.00	225W 240V FLEX BLANKET ELEM	EA	101.30
02.05.050E.00	450W 240V HDW ELEMENT EXP	EA	61.10
02.05.051T.00	450W 208V HDW ELEMENT	EA	61.80
02.05.052T.00	450W 120V HDW ELEMENT	EA	61.80
02.05.053E.00	450W 220V HDW ELEMENT EXP	EA	61.80
02.05.053T.00	450W 220V HDW ELEMENT	EA	61.80
02.05.054T.00	450W 100V HDW ELEMENT	EA	61.80
02.05.055.00	450W 120V HDW-XN ELEMENT	EA	61.80
02.05.056.00	450W 208V HDW-XN ELEMENT	EA	61.80
02.05.057.00	450W 220V HDW-XN ELEMENT	EA	61.80
02.05.058.00	450W 240V HDW-XN ELEMENT	EA	61.80
02.05.058E.00	450W 240V HDW-XN ELEMENT EXP	EA	61.10
02.05.092.00	130W 240V FOIL ELEMENT-90"	EA	57.00
02.05.094.00	100W 240V FOIL ELEMENT-70"	EA	56.60
02.05.095.00	175W 240V FOIL ELEMENT-108"	EA	55.00
02.05.096.00	150W 240V FOIL ELEMENT-96"	EA	60.50
02.05.098.00	GRS/BW-12 50W 120V FOIL ELE	EA	28.90
02.05.099.00	GRS/BW-18 120W 120V 36 X 1 ELE	EA	35.50
02.05.100.00	GRS/BW-24 150W 120V 54"X1" ELE	EA	36.80
02.05.101.00	GRS/BW-30 185W 120V 66"X1" ELE	EA	42.10
02.05.102.00	GRS/BW-36 220W 120V 78"X1" ELE	EA	44.70
02.05.103.00	GRS/BW-42 250W 120V 90"X1" ELE	EA	50.00
02.05.105.00	GRS/BW-54 320W 120V 114"X1"ELE	EA	64.50
02.05.106.00	350W 120V 126" HEATING ELEM	EA	65.80
02.05.107.00	GRS/BW-66 385W 120V 138"X1"ELE	EA	75.00
02.05.108.00	GRS/BW-72 420W 120V 150"X1"ELE	EA	78.90
02.05.109.00	GRS/BW-24 150W 208V 54"X1" ELE	EA	38.20
02.05.111.00	GRS/BW-36 220W 208V 78"X1" ELE	EA	56.80
02.05.112.00	GRS/BW-42 250W 208V 90"X1" ELE	EA	57.90
02.05.113.00	GRS/BW-48 280W 208V 102"X1"ELE	EA	59.00
02.05.114.00	GRS/BW-54 320W 208V 114"X1"ELE	EA	64.50
02.05.115.00	GRS/BW-60 350W 208V 126"X1"ELE	EA	65.80
02.05.116.00	GRS/BW-66 385W 208V 138"X1"ELE	EA	75.00
02.05.122.00	110W 120V 70" X 1" FOIL ELEM	EA	64.50
02.05.126.00	150W 120V FOIL ELEMENT-108"	EA	59.20
02.05.127.00	50W 120V FOIL ELEMENT-36"	EA	35.80
02.05.129.00	GRS-48 280W 120V FOIL ELEMENT	EA	60.00
02.05.131.00	120W 220V FOIL ELEMENT	EA	54.70
02.05.132.00	185W 220V FOIL ELEMENT	EA	65.80
02.05.136.00	50W 220V 24"X1" ELEMENT	EA	50.50
02.05.137.00	150W 220V 54"X1" ELEMENT	EA	42.10
02.05.138.00	220W 220V 78"X1" ELEMENT	EA	57.90





Replacement Parts Price List in Canadian Dollars

January 1, 2012

Item	Description	Unit of Measure	List Price
02.05.139.00	250W 220V 90"X1" ELEMENT	EA	78.90
02.05.141.00	280W 220V 102"X1" ELEMENT	EA	61.80
02.05.142.00	320W 220V 114"X1" ELEMENT	EA	67.10
02.05.143.00	350W 220V 126"X1" ELEMENT	EA	68.40
02.05.144.00	385W 220V 138"X1" ELEMENT	EA	76.30
02.05.145.00	420W 220V 150"X1" ELEMENT	EA	80.30
02.05.146.00	120W 240V 36"X1" ELEMENT	EA	56.80
02.05.147.00	150W 240V 54"X1" ELEMENT	EA	57.90
02.05.148.00	185W 240V 66"X1" ELEMENT	EA	58.90
02.05.149.00	220W 240V 78"X1" ELEMENT	EA	58.90
02.05.150.00	250W 240V 90"X1" ELEMENT	EA	58.90
02.05.151.00	250W 240V 102"X1" ELEMENT	EA	58.90
02.05.152.00	280W 240V 102"X1" ELEMENT	EA	58.90
02.05.155.00	385W 240V 138"X1" ELEMENT	EA	78.90
02.05.199.00	400W 240V BLANKET HEATER	EA	156.60
02.05.202.00	450W 120V BLK TYPE ROPE HEATR	EA	89.50
02.05.203.00	400W 120V BLK TYPE ROPE HEATR	EA	146.00
02.05.204.00	150W 120V BLK TYPE ROPE HEATR	EA	39.50
02.05.205.00	440W 120V BLK TYPE ROPE HEATR	EA	149.00
02.05.210.00	290W 120V BLK TYPE ROPE HEATR	EA	114.50
02.05.211.00	315W 120V BLK TYPE ROPE HEATR	EA	97.40
02.05.212.00	255W 120V BLK TYPE ROPE HEATR	EA	94.70
02.05.213.00	270W 120V BLK TYPE ROPE HEATR	EA	97.40
02.05.216.00	480W 240V BLK TYPE ROPE HEATR	EA	128.90
02.05.217.00	400W 240V BLK TYPE ROPE HEATR	EA	142.10
02.05.218.00	385W 240V BLK TYPE ROPE HEATR	EA	130.30
02.05.219.00	320W 240V BLK TYPE ROPE HEATR	EA	130.30
02.05.220.00	350W 240V BLK TYPE ROPE HEATR	EA	115.80
02.05.221.00	280W 240V BLK TYPE ROPE HEATR	EA	121.10
02.05.224.00	150W 220V BLK TYPE ROPE HEATR	EA	38.20
02.05.247.00	450W 120V BLANKET TYPE HEATER	EA	82.90
02.05.255.00	240W 120V BLANKET HEATER	EA	89.50
02.05.258.00	210W 120V BLANKET 35"x7" GRS	EA	56.60
02.05.259.00	210W 208V BLANKET 35"x7" GRS	EA	69.50
02.05.260.00	150W 120V BLANKET 7"x23" GRS	EA	52.60
02.05.264.00	150W 240V BLK TYPE ROPE HEATR	EA	47.40
02.05.267.00	120W 120V BLANKET 17"x7" GRS	EA	43.40
02.05.271.00	150W 100V BLK TYPE ROPE HEATR	EA	51.30
02.05.272.00	135W 120V BLK ROPE HTR GRKW-1	EA	61.80
02.05.274.00	390W 120V BLKT HTR GRSB 18x17	EA	86.80
02.05.275.00	610W 120V BLKT HTR GRSB 18x29	EA	114.50
02.05.276.00	720W 120V BLKT HTR GRSB 18x35	EA	140.80
02.05.277.00	275W 220V BLKT HTR GRSB 18x11	EA	75.00
02.05.278.00	390W 220V BLKT HTR GRSB 18x17	EA	86.80
02.05.279.00	610W 220V BLKT HTR GRSB 18x29	EA	114.50
02.05.280.00	720W 220V BLKT HTR GRSB 18x35	EA	140.80
02.05.281.00	275W 240V BLKT HTR GRSB 18x11	EA	72.40
02.05.282.00	390W 240V BLKT HTR GRSB 18x17	EA	86.80
02.05.283.00	610W 240V BLKT HTR GRSB 18x29	EA	114.50
02.05.284.00	720W 240V BLKT HTR GRSB 18x35	EA	140.80



Replacement Parts Price List in Canadian Dollars

January 1, 2012

Item	Description	Unit of Measure	List Price
02.05.288.00	425W 120V BLK TYPE ROPE HEATR	EA	152.60
02.05.293.00	125W 120V GRHD BLANKET HEATER	EA	43.40
02.05.294.00	125W 240V GRHD BLANKET HEATER	EA	43.40
02.05.295.00	250W 120V GRHDH HUMIDITY BLNKT	EA	43.40
02.05.296.00	250W 230V GRHDH HUMIDITY BLNKT	EA	43.40
02.05.301.00	150W 230V CARVING STATION BLKT	EA	77.60
02.05.302.00	100W 120V 6&7.75 X 17 BLANKET	EA	30.30
02.05.303.00	125W 120V 6&7.75 X 23 BLANKET	EA	36.80
02.05.305.00	175W 120V 6&7.75 X 35 BLANKET	EA	44.70
02.05.306.00	125W 120V 9.75&12 X 17 BLANKET	EA	34.20
02.05.307.00	175W 120V 9.75&12 X 23 BLANKET	EA	42.10
02.05.308.00	225W 120V 9.75&12 X 29 BLANKET	EA	43.40
02.05.309.00	275W 120V 9.75&12 X 35 BLANKET	EA	47.40
02.05.310.00	100W 230V 6&7.75 X 17 BLANKET	EA	38.20
02.05.311.00	125W 230V 6&7.75 X 23 BLANKET	EA	86.80
02.05.314.00	125W 230V 9.75&12 X 17 BLANKET	EA	35.80
02.05.315.00	175W 230V 9.75&12 X 23 BLANKET	EA	42.10
02.05.316.00	225W 230V 9.75&12 X 29 BLANKET	EA	47.40
02.05.317.00	275W 230V 9.75&12 X 35 BLANKET	EA	52.60
02.05.333.00	1000W 120V BLK ROPEHTR 2BW-66	EA	150.50
02.05.337.00	400W 120V BLK HTR 41BK BASE	EA	138.90
02.05.343.00	325W 120V BLK TYPE ROPE HEATR	EA	164.50
02.05.344.00	250W 120V BLK TYPE ROPE HEATR	EA	152.60
02.05.347.00	400W 120V BLK TYPE ROPE HEATR	EA	150.00
02.05.391.00	325W 240V BLANKET HEATER	EA	174.00
02.05.392.00	250W 240V BLANKET HEATER	EA	173.70
02.05.405.00	325W 220V BLANKET HEATER	EA	175.80
02.05.406.00	250W 220V BLANKET HEATER	EA	173.70
02.05.415.00	1100W 120V HDW-MN ELEMENT	EA	81.60
02.05.442.00	475W 120V GRSB 24" WIDE BLKT	EA	121.10
02.05.443.00	750W 120V GRSB 24" WIDE BLKT	EA	159.20
02.05.456.00	875W 240V GRSB30x30 BLKT	EA	146.30
02.05.457.00	555W 220V GRSB18x30 BLKT	EA	98.00
02.05.458.00	875W 220V GRSB30x30 BLKT	EA	119.00
02.05.501.00	475W 120V BLKT HTR GRSB 14x29	EA	100.00
02.05.504.00	220W 120V GRFHS-16 BLANKET ELE	EA	89.50
02.05.505.00	225W 100V 9.75&12 X 29 BLANKET	EA	57.90
02.05.506.00	275W 100V 9.75&12 X 35 BLANKET	EA	52.60
02.05.507.00	125W 100V GRHD BLANKET HEATER	EA	64.50
02.05.508.00	250W 100V GRHDH HUMIDITY BLNKT	EA	64.50
02.05.509.00	450W 100V HDW-XN ELEMENT	EA	61.80
02.05.540.00	325W 120V FOIL ELEM,LH FRONT	EA	67.10
02.05.541.00	325W 120V FOIL ELEM,RH FRONT	EA	67.10
02.05.542.00	150W 120V FOIL ELEM,LH REAR	EA	67.10
02.05.543.00	150W 120V FOIL ELEM,RH REAR	EA	67.10
02.05.544.00	350W 120V GRSB 24" WIDE BLKT	EA	121.10
02.05.550.00	390W 100V BLKT HTR GRSB 18x17	EA	240.80
02.05.551.00	610W 100V BLKT HTR GRSB 18x29	EA	282.90
02.05.552.00	720W 100V BLKT HTR GRSB 18x35	EA	311.80
02.05.553.00	650W 120V BLANKET,RH	EA	76.30



Replacement Parts Price List in Canadian Dollars

January 1, 2012

Item	Description	Unit of Measure	List Price
02.05.554.00	650W 120V BLANKET,LH	EA	76.30
02.05.555.00	135W 120V BLKT HTR HDW, TOP	EA	86.80
02.05.556.00	300W 120V BLKT HTR HDW,BOTTOM	EA	86.80
02.05.557.00	90W 120V BLKT HTR HDW,CENTER	EA	86.80
02.05.558.00	135W 220V BLKT HTR HDW, TOP	EA	86.80
02.05.559.00	300W 220V BLKT HTR HDW,BOTTOM	EA	86.80
02.05.560.00	90W 220V BLKT HTR HDW,CENTER	EA	86.80
02.05.561.00	135W 240V BLKT HTR HDW, TOP	EA	86.80
02.05.562.00	300W 240V BLKT HTR HDW,BOTTOM	EA	86.80
02.05.563.00	90W 240V BLKT HTR HDW,CENTER	EA	86.80
02.05.576.00	350W 230V GRSB 24" WIDE BLKT	EA	221.10
02.05.577.00	475W 230V GRSB 24" WIDE BLKT	EA	232.90
02.05.578.00	750W 230V GRSB 24" WIDE BLKT	EA	247.40
02.05.601.00	780W 120V BLKT HTR GRSS 18x30	EA	84.20
02.05.642.00	1000W 220V ELEM,TM-10	EA	76.80
02.05.643.00	350W 120V ELEM,12.25 X 20	EA	57.00
02.05.655.00	425W 120V BLKT HTR 18 x 24	EA	97.00
02.05.657.00	630W 120V BLKT HTR 18 x 36	EA	76.80
02.05.658.00	500W 240V BLKT HTR 18 x 24	EA	101.10
02.05.659.00	625W 240V BLKT HTR 18 x 30	EA	77.00
02.05.660.00	750W 240V BLKT HTR 18 x 36	EA	67.00
02.05.661.00	110W 120V BLKT,QW-6,HIGH TEMP	EA	40.00
02.05.662.00	425W 120V BLKT HTR 18 x 24	EA	60.00
02.05.663.00	525W 120V BLKT HTR 18 x 30	EA	80.00
02.05.665.00	500W 240V BLKT HTR 18 x 24	EA	57.00
02.05.666.00	625W 240V BLKT HTR 18 x 30	EA	73.00
02.05.667.00	750W 240V BLKT HTR 18 x 36	EA	84.00
02.05.673.00	350W 230V ELEM,12.25 X 20	EA	56.00
02.05.674.00	900W 220V ELEM,TM-10	EA	76.80
02.05.675.00	1000W 120V ELEM,TM-10	EA	76.80
02.05.676.00	750W 120V ELEM,TM-10	EA	76.80
02.05.677.00	700W 100V ELEM,TM-5	EA	71.60
02.05.678.00	700W 120V ELEM,TM-5	EA	71.60
02.05.679.00	700W 220V ELEM,TM-5	EA	71.60
02.05.680.00	600W 100V ELEM,TM-5	EA	71.60
02.05.681.00	600W 120V ELEM,TM-5	EA	71.60
02.05.682.00	600W 220V ELEM,TM-5	EA	71.60
02.05.711.00	800W 120V BLKT,DCSBXXX-3624	EA	92.00
02.05.714.00	350W 230V BLKT,DCSBXXX-R24	EA	87.00
02.05.715.00	500W 230V BLKT,DCSBXXX-2420	EA	100.00
02.05.716.00	800W 230V BLKT,DCSBXXX-3624	EA	118.00
02.07.001.00	750W 120V CERAMIC ELEMENT ONLY	EA	94.70
02.07.002.00	500W 120V CERAMIC ELEMENT ONLY	EA	94.70
02.07.003.00	750W 240V CERAMIC ELEMENT	EA	94.70
02.07.004.00	1000W 240V CERAMIC ELEMENT	EA	94.70
02.07.005.00	250W 120V 1/2 SIZE CERAMIC ELE	EA	84.20
02.07.006.00	375W 120V 1/2 SIZE CERAMIC ELE	EA	84.20
02.07.007.00	500W 120V 1/2 SIZE CERAMIC ELE	EA	84.20
02.07.008.00	650W 120V CERAMIC ELEMENT	EA	94.70
02.07.009.00	500W 240V CERAMIC ELEMENT	EA	94.70



Replacement Parts Price List in Canadian Dollars

January 1, 2012

Item	Description	Unit of Measure	List Price
02.07.010.00	650W 240V CERAMIC ELEMENT	EA	94.70
02.07.011.00	500W 120V 2/3 SIZE CERAMIC ELE	EA	94.70
02.07.012.00	425W 120V 2/3 SIZE CERAMIC ELE	EA	94.70
02.07.013.00	375W 240V 1/2 SIZE CERAMIC ELE	EA	84.20
02.07.014.00	900W 120V CERAMIC ELEMENT	EA	94.70
02.07.015.00	900W 240V FULL CERAMIC ELE	EA	94.70
02.07.016.00	300W 240V 1/2 SIZE CERAMIC ELE	EA	84.20
02.07.017.00	500W 240V 1/2 SIZE CERAMIC ELE	EA	84.20
02.07.018.00	600W 240V 2/3 SIZE CERAMIC ELE	EA	94.70
02.07.020.00	500W 440V 2/3 SIZE CERAMIC ELE	EA	94.70
02.07.021.00	650W 440V CERAMIC ELEMENT	EA	94.70
02.08.581.01	HWB 750W 120V RECT ELEM	EA	54.70
02.08.581.03	HWB 1200W 208V RECT ELEM	EA	56.80
02.08.581.04	HWB 1200W 240V RECT ELEM	EA	56.80
02.08.581.05	HWB 1650W 120V RECT ELEM	EA	60.00
02.08.581.06	HWB 1650W 208V RECT ELEM	EA	60.00
02.08.581.07	HWB 1650W 240V RECT ELEM	EA	60.00
02.08.581.08	HWB 1200W 220V RECT ELEM	EA	56.80
02.08.581.09	HWB 1650W 220V RECT ELEM	EA	60.00
02.08.581.10	HWB 750W 208V RECT ELEM	EA	54.00
02.08.586.01	HWB 500W 120V ROUND ELEM	EA	51.60
02.08.586.02	HWB 800W 120V ROUND ELEM	EA	56.80
02.08.586.03	HWB 600W 220V RND ELEM 536@208	EA	51.60
02.08.586.04	HWB 600W 240V ROUND ELEM	EA	51.60
02.08.586.05	HWB 800W 220V RND ELEM 715@208	EA	56.80
02.08.586.06	HWB 800W 240V ROUND ELEM	EA	56.80
02.08.650.01	HWBI-S 750W 120V RECT ELEM	EA	54.00
02.08.650.02	HWBI-S 1200W 120V RECT ELEM	EA	56.00
02.08.650.03	HWBI-S 1200W 208V RECT ELEM	EA	56.00
02.08.650.04	HWBI-S 1200W 240V RECT ELEM	EA	56.00
02.08.650.05	HWBI-S 1200W 220V RECT ELEM	EA	56.00
02.09.241.00	900W 120V TQ ELEMENT	EA	38.90
02.09.242.00	1100W 120V TQ ELEMENT	EA	39.50
02.09.243.00	750W 208V TQ ELEMENT	EA	39.50
02.09.244.00	900W 208V TQ ELEMENT	EA	39.50
02.09.245.00	1100W 208V TQ ELEMENT	EA	39.50
02.09.246.00	750W 240V TQ ELEMENT	EA	39.50
02.09.247.00	900W 240V TQ ELEMENT	EA	39.50
02.09.248.00	1100W 240V TQ ELEMENT	EA	39.50
02.09.249.00	750W 230V TQ ELEMENT CE	EA	39.50
02.09.250.00	900W 230V TQ ELEMENT CE	EA	39.50
02.09.251.00	1000W 230V TQ ELEMENT CE	EA	39.50
02.09.252.00	1150W 230V TQ ELEMENT CE	EA	39.50
02.09.253.00	880W 120V TQ ELEMENT	EA	39.50
02.09.254.00	1250W 208V TQ ELEMENT	EA	39.50
02.09.255.00	650W 120V TQ ELEMENT	EA	39.50
02.09.256.00	1250W 240V TQ ELEMENT	EA	39.50
02.09.266E.00	1050W 208V TQ 3 SLICE ELEMENT	EA	62.10
02.09.267E.00	1260W 208V TQ 3 SLICE ELEMENT	EA	62.10
02.09.268E.00	1750W 208V TQ 3 SLICE ELEMENT	EA	62.10



Replacement Parts Price List in Canadian Dollars

January 1, 2012

Item	Description	Unit of Measure	List Price
02.09.269E.00	1050W 240V TQ 3 SLICE ELEMENT	EA	62.10
02.09.270E.00	1260W 240V TQ 3 SLICE ELEMENT	EA	62.10
02.09.271E.00	1750W 240V TQ 3 SLICE ELEMENT	EA	62.10
02.11.001.00	GASKET FOR MC BOOSTER	EA	1.30
02.11.012.00	GASKET, ELEMENT (BOOSTER)	EA	1.30
02.12.001A.00	BLOWER MOTOR CONNECTOR	EA	12.60
02.12.003B.00	BASIC BLOWER MOTOR KIT 120VOLT	EA	282.90
02.12.004.00	MOTOR,RACK 120V 60Hz FDW 1 RPM	EA	134.20
02.12.005.00	MOTOR,RACK 120V 60Hz 2 RPM FS	EA	223.70
02.12.005R.00	FLAV-R-SAVOR RACK MOTOR KIT	EA	300.00
02.12.006.00	MOTOR,BLOWER 230V 50/60Hz FDW	EA	167.10
02.12.008A.00	FAN,COOLING 120V 60Hz TQ	EA	88.20
02.12.010.00	FAN,COOLING 230V 50/60Hz TQ	EA	88.20
02.12.011.00	FAN,GUARD CHROME WIRE	EA	11.80
02.12.026.00	MOTOR,RACK 240V 50Hz FDW	EA	159.20
02.12.030.00	FAN,CIRCULATION 115V 60Hz	EA	100.00
02.12.039.00	FAN,AXIAL 230V 50/60Hz	EA	100.00
02.12.047.00	MOTOR,RACK220/240 50/60Hz 2RPM	EA	300.00
02.12.049.00	MOTOR,GEAR 230V 50/60Hz WFST	EA	242.10
02.12.076.00	MOTOR,GEAR 208V 60Hz 11 RPM	EA	185.50
02.12.077.00	MOTOR,GEAR 240V 60Hz 11 RPM	EA	185.50
02.12.079.00	MOTOR,GEAR 230V 50Hz 11 RPM	EA	185.50
02.12.081.00	MOTOR,GEAR 120V 60Hz 9 RPM	EA	185.50
02.12.088.01	FAN BLADE,METAL,3",RH	EA	4.50
02.12.088.02	FAN BLADE,METAL,2.625",RH	EA	4.50
02.12.096.00	MOTOR,GEAR 230V 50Hz 11 RPMCCL	EA	185.50
02.12.101.00	MOTOR,GEAR 120V 60Hz 9 RPM	EA	185.50
02.12.102.00	MOTOR,GEAR 208-240V 60Hz 11RPM	EA	185.50
02.13.322.00	POTENTIOMETER HARNESS,TQ	EA	134.20
02.13.329.00	POTENTIOMETER,TQ,SPEED ONLY	EA	90.80
02.15.005.00	T-BLOCK 12P (N3CS-DC)	EA	23.20
02.15.008.00	T-BLOCK 3P HEAVY DUTY	EA	194.70
02.15.012.00	T-BLOCK 8P	EA	17.10
02.15.015.00	T-BLOCK 2P PORCELAIN	EA	9.20
02.15.021.00	T-BLOCK 3P #2/0 WIRE	EA	59.20
02.15.022.00	T-BLOCK SECT WAGO 2P GREEN	EA	8.40
02.15.027.00	T-BLOCK 30P PINCH SNAP MT 60	EA	65.80
02.15.029.00	T-BLOCK 3P 44AMP "CE"	EA	5.30
02.15.030.00	T-BLOCK 3P 26AMP "CE"	EA	7.90
02.15.037.00	T-BLOCK 3P 30AMP CERAMIC 500V	EA	17.10
02.16.001A.00	T-STAT CONT MECH WET 100-200	EA	155.30
02.16.002.00	T-STAT CONT MECH DRY 81-192	EA	85.50
02.16.003.00	T-STAT CONT MECH WET 112-192	EA	76.30
02.16.003A.00	T-STAT CONT MECH WET ROB SHAW	EA	117.10
02.16.003B.00	T-STAT CONT MECH WET 192F NI	EA	94.70
02.16.004.00	T-STAT LIMIT MECH WET 205	EA	117.10
02.16.004A.00	T-STAT CONT MECH WET 175 FIXED	EA	117.10
02.16.011.00	T-STAT CONT MECH DRY 600	EA	85.50
02.16.014.00	T-STAT LIMIT MECH SURFACE 190F	EA	87.40
02.16.016.00	T-STAT CONT MECH WET 200WO EXT	EA	89.50



Replacement Parts Price List in Canadian Dollars

January 1, 2012

Item	Description	Unit of Measure	List Price
02.16.016A.00	T-STAT CONT MECH CORN COOK 160	EA	102.60
02.16.021.00	HUMIDITY CONTROL	EA	100.00
02.16.024.00	T-STAT CONT MECH WET 192	EA	67.10
02.16.025A.00	T-STAT LIMIT MECH WET 210F MAN	EA	72.40
02.16.028.00	T-STAT CONT MECH SURF FEN	EA	121.10
02.16.030.00	T-STAT CONT MECH DRY 215F	EA	90.80
02.16.035.00	T-STAT LIMIT MECH SURF 240F	EA	48.70
02.16.037.00	T-STAT CONT MECH DRY 192F	EA	78.90
02.16.043.00	T-STAT CONT DISP DRY 30-250	EA	64.50
02.16.044.00	T-STAT TID DRY CELCIUS VERT	EA	72.40
02.16.049.00	MECH DRUM THERMOMETER VERTICAL	EA	72.40
02.16.050.00	MECH DRUM THERMOMTR HORIZONTAL	EA	72.40
02.16.055.00	T-STAT CONT MECH DRY 285F	EA	86.80
02.16.060B.00	T-STAT CONT MECH DRY 285F MAX	EA	65.30
02.16.071.00	T-STAT LIMIT MECH BULB 220F	EA	78.90
02.16.072.00	T-STAT LIMIT MECH SURF 400F	EA	55.30
02.16.106.00	T-STAT LIMIT MECH SURF 320 MAN	EA	43.40
02.16.116.00	T-STAT LIMIT MECH WET 210F MAN	EA	72.60
02.16.120.00	T-STAT LIMIT MECH SURF 105F NO	EA	33.70
02.16.121.00	T-STAT LIMIT MECH SURF 204 MAN	EA	53.70
02.16.122.00	T-STAT LIMIT SURF 75C (167F)	EA	31.60
02.16.132.00	THERMOSTAT,HIGH LIMIT,240C	EA	19.00
02.16.146.00	T-STAT LIMIT MECH AIR 200F MAN	EA	22.10
02.16.152.00	T-STAT LIMIT MECH SURF 175F NO	EA	36.80
02.17.004.00	TRANS 120VSEC:208/240PRI 80VA	EA	76.30
02.17.005.00	TRANS 120VSEC:480PRI 80VA	EA	76.30
02.17.022.00	TRANS 24VSEC:120PRI 5VA	EA	34.20
02.17.023.00	TRANS 24VSEC:230PRI 10VA	EA	34.20
02.17.034.00	TRANS 24VSEC:120PRI 40VA	EA	26.30
02.17.035.00	TRANS 24VSEC:230PRI 25VA	EA	51.30
02.17.046.00	TRANS 24VSEC:208/240PRI 50VA	EA	56.60
02.17.048.00	TRANS 230VSEC:380PRI 50VA CE	EA	166.00
02.17.049.00	TRANS 120VSEC:208/240PRI 25VA	EA	45.30
02.17.050.00	TRANS 120VSEC:208/240PRI 50VA	EA	50.50
02.17.052.00	TRANS 120VSEC:480PRI 25VA	EA	45.30
02.17.053.00	TRANS 120VSEC:480PRI 50VA	EA	55.80
02.17.054.00	TRANS 120VSEC:208/240PRI 25VA	EA	45.30
02.17.055.00	TRANS 120VSEC:480PRI 25VA	EA	45.30
02.17.056.00	TRANS 120VSEC:600PRI 25VA	EA	74.70
02.17.058.00	TRANS 115VSEC:415/440VPRI 40VA	EA	45.30
02.17.060.00	TRANS 24VSEC:115-230PRI 20VA	EA	37.90
02.17.069.00	TRANS 120VSEC:230PRI 130VA	EA	117.90
02.18.001.00	WIRE 16GA YELLOW 200C	100 FT	190.00
02.18.002.00	WIRE 14GA BLACK 200C	100 FT	110.00
02.18.003.00	WIRE 14GA BLUE 200C	100 FT	110.00
02.18.004.00	WIRE 14GA RED 200C	100 FT	110.00
02.18.005.00	WIRE 12GA BLACK 200C	100 FT	130.00
02.18.006.00	WIRE 12GA BLUE 200C	100 FT	130.00
02.18.007.00	WIRE 12GA RED 200C	100 FT	130.00
02.18.008.00	WIRE 10GA BLACK 200C	100 FT	190.00



Replacement Parts Price List in Canadian Dollars

January 1, 2012

Item	Description	Unit of Measure	List Price
02.18.009.00	WIRE 10GA BLUE 200C	100 FT	190.00
02.18.010.00	WIRE 10GA RED 200C	100 FT	190.00
02.18.012.00	WIRE 12GA WHITE 200C	100 FT	130.00
02.18.013.00	WIRE 12GA LT BROWN TGGT 250C	100 FT	390.00
02.18.016.00	CORD 6-20/RT 20A 90C 48"	EA	60.50
02.18.017.00	CORD 6-30/RT 25A 90C 52"	EA	125.00
02.18.031.00	WIRE 14GA WHITE 200C	100 FT	110.00
02.18.035.00	CORD 5-15/ST 15A 90C 132"	EA	26.30
02.18.036.00	CORD 6-15/ST 15A 105C 75"	EA	34.20
02.18.038.00	CORD CEE7/7/ST 16A 70C 78"	EA	30.50
02.18.039.00	CORD 5-30/RT 30A 90C 82"	EA	64.50
02.18.040.00	WIRE 16GA BLACK 200C	100 FT	90.00
02.18.041.00	WIRE 16GA RED 200C	100 FT	90.00
02.18.042.00	WIRE 16GA WHITE 200C	100 FT	90.00
02.18.044.00	WIRE 14GA GREEN TGGT 250C	100 FT	260.00
02.18.045.00	WIRE 14GA WHITE MGT450C	100 FT	430.00
02.18.060.00	WIRE 14GA GREEN 125C	100 FT	100.00
02.18.066.00	CORD BS1363/RT 6A 70C 77"	EA	35.80
02.18.068.00	CORD BS1363/RT 13A 70C 96"	EA	51.30
02.18.075.00	CORD 3G-1.5MM 16A 250V 60C 82"	EA	42.10
02.18.077.00	CORD CEE7/7/ST 10A 70C 74"	EA	42.10
02.18.082.00	CORD 5-20/ST 18A 105C 135"	EA	45.30
02.18.084.00	CORD 5-15/ST 13A 105C 138"	EA	31.60
02.18.085.00	CORD 20A 125/250V SJTO 14/4 78	EA	134.70
02.18.092.00	WIRE HIGH TEMP WITH RED TRACER	100 FT	290.00
02.18.093.00	WIRE 14GA TAN W/BLK MGT 450C	100 FT	430.00
02.18.097.00	WIRE 14GA TAN W/BLK TGGT 250C	100 FT	410.00
02.18.111.00	CORD 6-20/ST 20A 105C 82"	EA	98.70
02.18.128.00	CORD 20A L125/250V SJTO14/4 78	EA	88.40
02.18.129.00	CORD 5-15/RT 6A 105C 111" W/SW	EA	60.00
02.18.134.00	CORD CEE7/7/ST 6A 60C 74" W/SW	EA	105.30
02.18.141.00	CORD 30A 250V 12/4 78" LOCKING	EA	128.90
02.18.157.00	WIRE 16GA TAN MGT450C	100 FT	430.00
02.18.158.00	WIRE 16GA TAN W/BLK MGT 450C	100 FT	430.00
02.18.285.00	WIRE 10GA WHITE 200C	100 FT	160.00
02.19.015.00	SWITCH ROC DPST,125/250V,16AMP	EA	31.60
02.19.025.00	SWITCH TOG 3PST 25A 250V	EA	89.50
02.19.027.00	SWITCH ROC SPST 10A 125V ILLUM	EA	23.20
02.19.032.00	SWITCH ROC SPST 5A 250V ILLUM	EA	33.70
02.19.038.00	NEMA 5-30R 30A 125V SNGL RECEP	EA	69.70
02.19.062.00	NEMA 5-20R 20A 125V SIN RECEP	EA	21.10
02.19.070G.00	PILOT LT GREEN 120V .140 GRIP	EA	6.30
02.19.070R.00	PILOT LT RED 120V .140 GRIP	EA	7.90
02.19.071G.00	PILOT LT GREEN 250V .140 GRIP	EA	7.90
02.19.071R.00	PILOT LT RED 250V .140 GRIP	EA	7.90
02.19.075.00	SWITCH ROC DPST 22A 120V RED	EA	23.20
02.19.076.00	SWITCH ROC DPST 16A 250V GREEN	EA	23.20
02.19.080.00	SWITCH ROC DPST 16A 125V ILLUM	EA	23.20
02.19.081.00	SWITCH ROC DPST 16A 250V ILLUM	EA	34.20
02.19.150.00	PILOT LT GREEN 250V	EA	7.90



Replacement Parts Price List in Canadian Dollars

January 1, 2012

Item	Description	Unit of Measure	List Price
02.19.151.00	PILOT LT RED 250V	EA	7.90
02.19.152.00	PILOT LT YELLOW 250V	EA	7.90
02.19.153.00	PILOT LT AMBER 125V	EA	7.90
02.19.154.00	PILOT LT RED 125V	EA	7.90
02.19.155.00	PILOT LT GREEN 125V	EA	7.90
02.19.161.00	SWITCH ROC DPST 16A 250V	EA	20.00
02.19.164.00	SWITCH,SPNO,LED,DRY CIRCUIT	EA	32.60
02.19.168.00	SWITCH TOG SPST 3A W/LEADS	EA	17.10
02.19.174.00	SWITCH,SELECTOR,4 POSITION,TM	EA	66.30
02.19.177.00	SW ROC SPST 22A 125V,16A 250V	EA	23.20
02.19.178.00	SWITCH ROC DPST 250V 10A GREEN	EA	20.00
02.20.011.00	3/4" CONDUIT LOCKNUT	EA	3.90
02.20.022.00	WIRE NUT PHENOLIC 150C	EA	0.50
02.20.026.00	1" DIA SCREENED PLUG	EA	3.90
02.20.027.00	CIRCUIT BREAKER BOOT N3CS	EA	182.90
02.20.030.00	7/8" SNAP PLUG BRT NI-PLT	EA	1.60
02.20.040.00	RUBBER BOOT FOR TOG SW	EA	7.90
02.20.043.00	1/2" SNAP PLUG CHROME PLTD	EA	1.60
02.20.047.00	WIRE NUT PHENOLIC 150C	EA	0.50
02.20.055.00	CAPLUG 1"SQ TUBING BLACK	EA	1.60
02.20.056.00	CAPLUG 1-1/2"SQ TUBING BLACK	EA	1.60
02.20.059.00	WEST BEND RECALL TIMER	EA	61.80
02.20.076.00	HEAT SHRINK TUBE,.205ID X 1"LG	EA	0.40
02.20.095.00	1" SNAP PLUG	EA	0.30
02.20.112.00	8 TERM MINI PLUG FEMALE	EA	23.20
02.20.202.00	3/8" SNAP BUSHING	EA	1.60
02.20.205.00	1/2" SNAP BUSHING	EA	0.30
02.20.206.00	CORD GRIP RT ANG 5/8" SR-11	EA	1.60
02.20.208.00	3/4" SNAP BUSHING BLACK	EA	0.30
02.20.209.00	CORD GRIP,STRT,.600-.690 MAX	EA	2.60
02.20.211.00	.730 X .560 ADAPTER 7/8" HOLE	EA	2.10
02.20.213.00	5/8" SNAP BUSHING	EA	0.30
02.20.216.00	5/16" SNAP PLUG	EA	0.30
02.20.217.00	3/8" SNAP PLUG BLACK	EA	0.30
02.20.218.00	1/4" SNAP PLUG BLACK	EA	0.70
02.20.220.00	3/16" SNAP PLUG	EA	0.70
02.20.221.00	WIRE NUT PORCELAIN 3-18 GA	EA	0.80
02.20.222.00	WIRE NUT,PORCELAIN 5-18 GAUGE	EA	1.60
02.20.224.00	CORD GRIP RT ANGLE(HPN)9/16"	EA	1.60
02.20.226.00	CORD GRIP STR THRU(ST)7/8"DIA	EA	1.60
02.20.230.00	9/16" SNAP BUSHING BLACK	EA	1.30
02.20.231.00	21/32" SNAP PLUG BLACK	EA	3.20
02.20.232.00	17/64" OPN/CLOSED BUSHING	EA	1.30
02.20.269.00	CORD GRIP 3/8" CONDUIT HUB	EA	20.00
02.20.270.00	CORD GRIP 3/8" CONDUIT LOCKNUT	EA	1.30
02.20.330.00	CORD GRIP,RT ANGLE,.770 X .875	EA	1.20
02.20.332.00	2 EAR CLAMP,9mm	EA	1.20
02.20.333.00	DIGITAL TIMER W/MEMORY	EA	46.30
02.20.334.00	EMT ANGLE COMP CONNECTOR,1/2"	EA	15.00
02.20.335.00	UF CABLE CONNECTOR,1/2"	EA	14.00





Replacement Parts Price List in Canadian Dollars

January 1, 2012

Item	Description	Unit of Measure	List Price
02.20.356.00	CORD GRIP,STRT,.770 X .875	EA	1.10
02.21.024.00	LP GAS VALVE CONVERSION KIT	EA	12.60
02.21.025.00	GAS VALVE NAT 3/4" W/LP KIT	EA	253.70
02.21.027.00	PMG-100 PRES SWITCH BLUE -.13	EA	38.20
02.21.028.00	PMG-200 PRESSWITCH WHITE -.28	EA	38.20
02.22.010.00	RECT RIBBON 3500W 240V 17x12	EA	235.50
02.30.039.00	LAMP SOCK,SINGLE,27" LEADS,FS	EA	23.20
02.30.040.00	LAMP SOCK,SINGLE,12" LEADS,FS	EA	19.00
02.30.041.00	LAMP HOLDER,END,30" 250C	EA	30.30
02.30.043.00	LAMP-60W,120V,INCANDESCENT,CTD	EA	7.90
02.30.044.00	LAMP SOCK,SINGLE,24" LEADS FW	EA	23.20
02.30.045.00	LAMP SOCK,TWIN,28" LEADS,FW	EA	47.40
02.30.047.00	LAMP SOCK,TWIN,28"HI TEMP LEAD	EA	53.90
02.30.049.00	LAMP-40W,130V,COATED	EA	9.20
02.30.051.00	LAMP SOCK,SINGLE,24"HI TEMP	EA	30.30
02.30.054.00	LAMP-21W,LIGHT BULB FLUORESCNT	EA	64.50
02.30.058.00	LAMP-60W,240V,CLEAR,TEFLON CTD	EA	9.20
02.30.060.00	LAMP SOCK,SINGLE,65" LEADS,HL	EA	23.20
02.30.061.00	LAMP SOCK,TWIN,65" LEADS,HL	EA	48.70
02.30.067.00	LAMP SOCK,LW	EA	9.20
02.30.068.00	LAMP-250W,120V,RED,INF,CTD	EA	50.00
02.30.069.00	LAMP-250W,120V,CLR,INF,CTD	EA	25.30
02.30.070.00	LAMP-250W,120V,RED,INF,UNCTD	EA	43.40
02.30.071.00	LAMP-250W,120V,CLR,INF,UNCTD	EA	15.80
02.30.073.00	LAMP SOCK,FSD	EA	6.30
02.30.074.00	LAMP-15W,120V,FSD	EA	31.60
02.30.076.00	FSD LIGHT COVER	EA	12.00
02.30.077.00	LAMP-21W,120V,30",FLUORESCENT	EA	40.80
02.30.081.00	LAMP-60W,120V,CTD,CLEAR HALGN	EA	23.70
02.30.082.00	LAMP-60W,240V,CTD,CLEAR,HALGN	EA	61.10
02.30.083.00	LAMP-250W,240V,CLR,INF,UNCTD	EA	65.90
02.30.087.00	LAMP SOCK,TWIN,30",450C LEADS	EA	53.90
02.30.089.00	LAMP-18W,120V,20",FLUORESCENT	EA	161.10
02.30.091.00	LAMP HOLDER,END,6" 200C LEADS	EA	17.10
02.30.092.00	18W 20" 120V FLUOR T4,WARM WHT	EA	41.10
02.30.093.00	LAMP-375W,120V,CLR,INF,UNCTD	EA	39.50
02.30.094.00	LAMP-375W,120V,RED,INF,UNCTD	EA	92.10
02.30.097.00	LAMP-375W,120V,CLR,INF,CTD	EA	52.60
02.30.098.00	LAMP-375W,120V,RED,INF,CTD	EA	98.70
02.30.100.00	LAMP-250W,240V,CLR,INF,CTD	EA	102.30
02.30.104.00	LAMP HOLDER,END,60" 200C LEADS	EA	23.20
02.30.116.00	LAMPHOLD,SINGLE,36" 450C LEADS	EA	47.40
02.30.126.00	LAMP-300W,240V,QUARTZ,SERVE RT	EA	41.10
02.30.128.00	LAMPHOLD,SINGLE,24" 200C LEADS	EA	33.00
02.30.135.00	BALLAST,120 TO 277V,50/60Hz	EA	71.00
02.30.145.00	LAMP HOLDER,END,41" 200C LEADS	EA	15.00
02.30.150.00	LAMP-150W,130V,QUARTZ	EA	9.00
02.30.151.00	LAMP-150W,240V,QUARTZ,SERVE RT	EA	26.00
02.40.001.00	LIQUID LEVEL SENSING PROBE BO	EA	43.40
02.40.002.00	DIODE-ALL TOASTERS	EA	3.90



Replacement Parts Price List in Canadian Dollars

January 1, 2012

Item	Description	Unit of Measure	List Price
02.40.015.00	FHX LWCO PROBE SHORT	EA	38.20
02.40.045.00	LWCO PROBE W/90 DEG BEND	EA	48.40
02.41.001.00	FUSE BLOCK 60A 300V 2P 2/0 LUG	EA	39.50
02.41.005.00	FUSE BLOCK 60A 300V 2P 2/0DUAL	EA	82.90
02.41.010.00	FUSE BLOCK 60A 300V 3P 2/0 LUG	EA	61.80
02.41.015.00	FUSE BLOCK 60A 300V 4P 2/0 LUG	EA	67.10
02.41.020.00	FUSE BLOCK 60A 300V 4P	EA	103.90
02.41.021.00	FUSE BLOCK 60A 300V 4P	EA	103.90
02.41.022.00	FUSE BLOCK 60A 300V 4P	EA	103.90
02.41.030.00	FUSE BLOCK 60A 600V 3P	EA	56.60
03.01.003.00	T/P GAUGE	EA	72.60
03.01.005.00	DIAL IND THERM FAHR & CELSIUS	EA	92.10
03.01.010.00	GAUGE,1/4"NPT,REAR STEM	EA	71.60
03.02.001.00	3/4" BALL VALVE	EA	55.30
03.02.001A.00	1-1/4 EXTENSION STEM KIT	EA	19.00
03.02.001B.00	BALL VALUE HANDLE	EA	8.40
03.02.002.00	3/4" SWEAT BALL VALVE	EA	62.10
03.02.004.00	PRESSURE REDUCING VALVE-IRON	EA	63.20
03.02.015.00	BRASS REGULATING VALVE	EA	146.10
03.02.020.00	RELIEF VALVE,T/P 150 PSI 210F	EA	30.50
03.02.022.00	T/P RELIEF VALVE (40XL-Z2)	EA	85.30
03.02.025.00	MANUAL SHUT OFF VALVE, NO LOCK	EA	42.10
03.02.026.00	SOLENOID VALVE 240V. 50/60Hz	EA	163.20
03.02.027.00	PMG-100 3/4" GAS SHUTOFF VALVE	EA	43.40
03.02.032.00	VALVE,DELTRON FRONT BRKT,24VAC	EA	187.40
03.02.039.00	BACKPRES REL VLV 1/2NPT 125PSI	EA	47.40
03.02.048.00	SOLENOID VALVE 120V. 60Hz	EA	46.30
03.02.048A.00	SOLENOID VALVE 240V. 50/60Hz	EA	46.30
03.02.067.00	VALVE,BALL,1",THREADED	EA	53.00
03.04.001.00	COPPER MANIFOLD-PLATED,3CS	EA	15.00
03.05.026.00	(2) PUMP FLANGES W/BOLTS	EA	50.00
03.05.055.00	PMG-100 3/16 x 3/8 SILIC. TUBE	FT	6.60
03.05.061.00	WATERTREAT UNIT 9799110 W/CART	EA	622.40
03.05.061A.00	WATERTREAT CARTRIDGE EV979922	EA	375.00
03.05.061B.00	WATERTREAT REP O-RING SCALTRON	EA	6.60
03.12.011.00	LP GAS PILOT #10 ORIFICE	EA	6.30
03.12.012.00	PMG-100,200 40mm GAS BURNER	EA	114.70
03.12.014.00	PMG-100 1/2x12" HOSE W/FTG	EA	21.10
03.12.015.00	PMG-100 GAS MANIFOLD	EA	130.50
03.12.016.00	PMG-100 1/8" #34 NAT ORIFICE	EA	8.40
03.12.019.00	PMG-200 GAS MANIFOLD	EA	135.80
03.12.020.00	PMG-200 1/8" #35 NAT ORIFICE	EA	8.40
03.12.021.00	PMG-100/200 1/8" #50 LP ORIF	EA	9.20
03.30.009.00	3/4" COPPER OUTLET PIPE	EA	45.30
03.30.015.00	INLET TUBE,LG COMPACT,DIMPLED	EA	48.40
03.40.034.00	2 WAY SOLENOID VALVE 220V,240V	EA	111.80
03.40.042.00	1/4" NYLO-SEAL TUBING (NAT)	FT	1.30
03.40.043.00	MALE CONN 3/8"PIPE TO 1/4"TUBE	EA	19.00
03.40.044.00	WATER FILL CUP	EA	23.20
03.40.053.00	1/4" ID TUBING	FT	10.50



Replacement Parts Price List in Canadian Dollars

January 1, 2012

Item	Description	Unit of Measure	List Price
03.40.057.00	SHOCK ABSORBER 3/4" MALE	EA	103.90
03.40.059.00	O-RING 1.312ID .096 FDA SILIC	EA	1.30
03.40.060.00	FHX TUBE BRUSH	EA	16.00
03.40.062F.00	1.5" ID TUBE 3.562" LG	EA	17.00
03.40.062R.00	1.5" ID TUBE 1.25" LG	EA	17.00
03.40.080.00	HOSE CLAMP SS .688"-1.25" RNG	EA	3.20
04.01.013.00	LEG 6" S.S.ADJ	EA	47.40
04.01.014.00	S.S.ADJ LEG FOR DECK MTG.	EA	72.70
04.01.038.00	TOGGLE SWITCH GUARD	EA	3.20
04.05.050.00	2/S TOAST COLLECTOR PAN	EA	39.50
04.05.051.00	3/S STANDARD COLLECTOR PAN	EA	53.70
04.05.060.00	BUSS BAR,"U"SHAPE,2.688"LONG	EA	1.30
04.05.061.00	BUSS BAR,HAT SHAPE,5"SPACING	EA	5.30
04.05.062.00	BUSS BAR,FLAT,1-1/4" SPACING	EA	1.30
04.05.063.00	BUSS BAR,HAT SHAPE,2 1/2" SPAC	EA	2.30
04.05.064.00	BUSS BAR,Z-SHAPE,2 1/2" LONG	EA	1.30
04.05.069.00	BUSS BAR JUMPER TQ-300	EA	2.60
04.05.070.00	FLAT BUSS BAR 4.125 LG	EA	2.60
04.05.073.00	TQ-XXX WIRE FEED RAMP	EA	110.50
04.05.074.00	TQ EXTENDED FEED RAMP	EA	85.20
04.05.075.00	TQ WIRE FEED RAMP-EXTENDED	EA	85.30
04.05.101.00	TK 2/S BASKET GUIDE	EA	45.30
04.05.121.00	TK 3/S BASKET GUIDE	EA	48.40
04.05.122.00	3/S CONVEYOR BASKET STD	EA	20.00
04.05.123.00	3/S HOLD DOWN BAR STD	EA	8.00
04.05.124.00	3/S CONVEYOR BASKET 5 1/2"HIGH	EA	30.30
04.05.141.00	TRH BASKET GUIDE	EA	36.80
04.05.142.00	2/S CONVEYOR BASKET STD	EA	17.00
04.05.143.00	2/S HOLD DOWN BAR STD	EA	5.70
04.05.144.00	TRH DAMPING SPRING	EA	2.30
04.05.150.00	2/S HOTDOG BUN HOLDDOWN BAR	EA	9.20
04.05.207.00	TQ BEARING SUPPORT	EA	3.90
04.05.211.00	TQ-300 TOAST TRAY ANODIZED	EA	35.80
04.05.215.00	TQ VANE ASSEMBLY	EA	27.40
04.05.216.00	TQ-300 RAMP	EA	27.40
04.05.218.00	TQ-300 CRUMB TRAY ASSEMBLY	EA	56.60
04.05.234.00	TQ-700 CRUMB TRAY ASSEMBLY	EA	63.20
04.05.235.00	TQ-700 RAMP	EA	33.70
04.05.238.00	TQ-700 TOAST TRAY ANODIZED	EA	41.10
04.05.252.00	TQ-700H WIRE FEEDER RAMP	EA	73.00
04.05.286.00	BEARING WITH BRKT, .375ID TQ	EA	23.20
04.05.310.00	PAN,TQ TOAST COLLECTOR	EA	24.20
04.05.311.00	TOAST CHUTE,TQ-800	EA	26.30
04.05.317.00	FEED RAMP,TQ,STANDARD	EA	69.70
04.05.333.00	TOAST CHUTE,TQ-400	EA	26.30
04.05.337.00	FEED RAMP,TQ SHORT	EA	69.70
04.05.357.00	BRACKET, TOP ELEMENT,TQ-800	EA	6.30
04.05.363.00	TOAST CHUTE,TQ-10	EA	27.40
04.05.384.00	PAN,TQ-800 TOAST COLLECTOR	EA	29.00
04.05.386.00	TQ SHAFT ASSEMBLY 1.15 WHEEL	EA	30.30



Replacement Parts Price List in Canadian Dollars

January 1, 2012

Item	Description	Unit of Measure	List Price
04.05.387.00	BEARING ASSY,3/8" W/NUT	EA	23.20
04.05.563.00	SIDE COVER,RH,TM	EA	51.60
04.05.564.00	SIDE COVER,LH,TM	EA	51.60
04.05.575.00	BRKT,ELEMENT,TM	EA	6.30
04.05.582.00	CONVEYOR OUT PLATE,TM-5	EA	14.00
04.05.583.00	TOAST CHUTE,TM-5	EA	43.20
04.05.584.00	REAR TOAST CHUTE,TM-5	EA	38.90
04.05.610.00	SHAFT ASSY,TM-5	EA	28.40
04.05.611.00	FEED RAMP,TM-5	EA	51.60
04.05.612.00	UPPER REFLECTOR ASSY,TM-5	EA	24.20
04.05.615.00	UPPER REFLECTOR ASSY,TM-10	EA	28.40
04.05.619.00	TOP COVER,TM-10	EA	201.00
04.05.627.00	CONVEYOR OUT PLATE,TM-10	EA	16.00
04.05.628.00	TOAST CHUTE,TM-10	EA	43.20
04.05.629.00	REAR TOAST CHUTE,TM-10	EA	45.30
04.05.631.00	BAFFLE PLT,INNER TOP,TM-10	EA	92.00
04.05.640.00	FEED RAMP,TM-10	EA	30.50
04.06.015.00	PTD BLK 3CS/FR 1&2 ELE BOT COV	EA	25.30
04.06.200.00	RECON HTR SINK BASKET	EA	101.30
04.06.204.00	SINK BAFFLE PLATE RECON HTR	EA	42.00
04.06.210.00	TUBULAR LEGS 1" DIA 34" LONG	EA	31.60
04.08.042.00	GR HANGER TAB	EA	1.30
04.08.042.01	GR HANGER TAB,BLACK	EA	2.00
04.08.044.00	GR WALL MOUNTING BRKT	EA	44.70
04.08.060.00	NON-ADJ LEG FLG CLEAR ANODIZED	EA	9.20
04.08.061.00	END CVR,STD,3.0"LG SQ LEG	EA	9.20
04.08.117.00	10" WIRE GUARD-CERAMIC ELEMENT	EA	12.60
04.08.121.00	6" WIRE GUARD-CERAMIC ELEMENT	EA	9.10
04.08.150.00	END CVR,HI-GLO,3.0"LG	EA	9.20
04.08.469.00	T-LEG END MOUNT STABILIZER	EA	5.30
04.08.530.00	SPACE,NONADJ LEG FLG CLEAR ANO	EA	5.00
04.08.599.00	GR HANGER TAB,3.75"	EA	1.10
04.09.051.00	END PLT,6",RH	EA	9.20
04.09.078.00	GREY PLASTIC BULLNOSE CORNER	EA	10.50
04.09.078BK.00	BLACK PLASTIC BULLNOSE CORNER	EA	10.50
04.09.200.00	TRIVET,FULL SIZE,PLATED	EA	55.30
04.09.201.00	END PLT,6",FRT,FF/FFB W/O SUP	EA	9.20
04.09.202.00	END PLT,6",REAR,FF/FFB W/BRKT	EA	9.20
04.09.205.00	PAN,FULL SIZE,2-1/2" DEEP,22GA	EA	69.70
04.09.206.00	PAN,FULL SIZE,4" DEEP,22GA	EA	82.90
04.09.208.00	TRIVET,1/2 SIZE,PLATED	EA	48.40
04.09.210.00	PAN,1/2 SIZE,2-1/2" DEEP,22GA	EA	55.30
04.09.211.00	PERF FLSE BOTT FOR 1/2 SIZ PAN	EA	13.20
04.09.213.00	TONGS,9" LONG SS	EA	7.90
04.09.214.00	PAN GRIPPER	EA	11.80
04.09.218.00	PAN,1/3 SIZE,2-1/2" DEEP	EA	48.40
04.09.224.00	TRIVET,1/2 SIZE,SS	EA	91.00
04.09.225.00	PAN,1/2 SIZE,PLASTIC	EA	50.00
04.09.226.00	PAN LID,1/2 SIZE,PLASTIC	EA	32.90
04.09.227.00	PAN,1/4 SIZE,AMBER PLASTIC	EA	32.90



Replacement Parts Price List in Canadian Dollars

January 1, 2012

Item	Description	Unit of Measure	List Price
04.09.228.00	TRIVET,1/4 SIZE,SS	EA	71.00
04.09.229.00	TRIVET,FULL SIZE,SS	EA	111.00
04.09.230.00	PAN,FULL SIZE,6" DEEP,22GA	EA	97.40
04.09.231.00	PAN,SPILLAGE,HDW	EA	189.00
04.09.235.00	PAN,15x20x5" DEEP	EA	223.70
04.09.236.00	PAN,1/2 SIZE,SS,4" DEEP	EA	75.00
04.09.402.00	1"DIAX4"LG PT POST FFB UPPER	EA	11.80
04.09.403.00	END CVR,PIVOT POST,CTR'D FFB	EA	35.80
04.09.404.00	SWIVEL SUPT W/NUT & 2 WASHERS	EA	36.80
04.09.405.00	END PLT,6",REAR,FFB W/ELEM SUP	EA	19.00
04.09.409.00	HOLD DOWN CLAMP	EA	9.20
04.09.410.00	PAN RAIL FOR HEATED BASE	EA	30.30
04.09.425.00	FRY STATION BRACKET W/HOLES	EA	7.90
04.09.426.00	SUPPORT BRACKET ASSEMBLY	EA	38.20
04.09.506.00	END CVR,PIVOT POST,OFF CENTER	EA	38.20
04.09.676.00	PAN,FULL SIZE,6"DEEP,22GA,PERF	EA	151.60
04.09.701.00	PAN,11 QT ROUND	EA	95.00
04.09.702.00	PAN,7 QT ROUND	EA	85.00
04.09.703.00	PAN,4-1/8 QT ROUND	EA	75.00
04.09.704.00	LID,11 QT ROUND,W/NOTCH	EA	58.90
04.09.705.00	LID,7 QT ROUND,W/NOTCH	EA	48.40
04.09.711.00	LID,4.1 QT ROUND,W/NOTCH	EA	37.90
04.09.746.00	LID,4QT,HINGED,SOUP WELL	EA	42.00
04.09.769.00	LID,7QT,HINGED,SOUP WELL	EA	52.00
04.09.770.00	LID,11QT,HINGED,SOUP WELL	EA	62.00
04.12.006.00	GRSDS-36 SIGN HOLDER INSERT	EA	41.40
04.12.007.00	GRSDS-41 SIGN HOLDER INSERT	EA	41.40
04.12.008.00	GRSDS-52 SIGN HOLDER INSERT	EA	48.70
04.12.009.00	GRSDS-30 SIGN HOLDER INSERT	EA	34.90
04.12.038.00	END PANEL,REMOVABLE,GRKW	EA	61.80
04.15.112.00	GRSDS GR2SD DIV ROD 22.875"	EA	18.90
04.15.143.00	GRSDS 30 SIGN HOLDER ASSY	EA	34.90
04.15.144.00	GRSDS 36 SIGN HOLDER ASSY	EA	40.80
04.15.145.00	GRSDS 41 SIGN HOLDER ASSY	EA	41.40
04.15.275.00	GRSDH SERIES DIV ROD 18.25"	EA	18.90
04.15.338.00	GRCW SWITCH COVER	EA	6.60
04.15.700.00	GRTB-XX S.S. DIVIDER	EA	15.00
04.15.753.00	GRSDS-30 SS CHANNEL DIVIDER	EA	32.90
04.15.754.00	GRSDS-36 SS CHANNEL DIVIDER	EA	36.80
04.15.755.00	GRSDS-41 SS CHANNEL DIVIDER	EA	44.70
04.15.756.00	GRSDS-52 SS CHANNEL DIVIDER	EA	59.20
04.16.488.00	LEG 6" SS ADJ 1/2x3/4" LG STUD	EA	38.20
04.16.547.00	HDW 3/8-16 LEG BRACKET	EA	9.20
04.16.551.00	HDW 1/2-13 LEG BRACKET	EA	9.20
04.16.635.00	HDW 2" CASTER W/MOUNTING PLATE	EA	56.60
04.16.638.00	HDW SEALED BEARING DRWR ROLLER	EA	25.00
04.16.645.00	HDW 2" LOCK CASTER W/MTG PLT	EA	56.60
04.16.732.00	HDW CHIP GUARD	EA	48.70
04.16.808.00	HDW-R CORE SIDES/BOTTOM-ITC	EA	69.70
04.16.815.00	HDW-R UPPER CORE BEZEL-ITC	EA	117.10



Replacement Parts Price List in Canadian Dollars

January 1, 2012

Item	Description	Unit of Measure	List Price
04.16.816.00	HDW-R LOWER CORE BEZEL-ITC	EA	117.10
04.16.817.00	HDW CONTROL ASSY-ITC	EA	28.90
04.16.828.00	HDW-R SINGLE CORE BEZEL-ITC	EA	109.20
04.17.001.00	MAGNET STRIKER PLATE (PLATED)	EA	6.60
04.17.009.00	DOOR HINGE,FS	EA	6.60
04.17.010.00	FS 3 TRAY SLANT RACK	EA	221.10
04.17.014.00	FST 5 TIER CIRCLE PAN RACK	EA	221.10
04.17.026.00	FS 3 TRAY PASS THRU RACK	EA	213.70
04.17.027.00	FST 4 TRAY SLANT RACK	EA	235.50
04.17.029.00	FS 4 TIER CIRCLE PAN RACK	EA	221.10
04.17.030.00	FST 4 TIER CIRCLE PAN RACK	EA	193.40
04.17.031.00	FS 3 TIER CIRCLE PAN RACK	EA	180.30
04.17.032.00	FST 4 RNG PIZZA RCK W/PN RETAN	EA	221.10
04.17.077.00	SERVICE FST 3TIER PRETZEL RACK	EA	235.50
04.17.079.00	FDW PRETZEL RACK	EA	221.10
04.17.095.00	PTD BLK FS HOOD	EA	76.30
04.17.130.00	3"DIA 4"CLEARANCE CASTER W/BRK	EA	55.30
04.17.132.00	5"DIA 6"CLEARANCE CASTER W/BRK	EA	102.60
04.17.142.00	HC LONG DOOR HINGE	EA	6.60
04.17.144.00	ADJUSTABLE SLIDE	EA	36.80
04.17.182.00	DRIVE LINK,FS RACK MOTOR	EA	26.30
04.17.183.00	DRIVE LINK COUPLING	EA	10.50
04.17.187.00	PAN,15",PERFORATED PIZZA	EA	31.60
04.17.188.00	PAN,16",PERFORATED PIZZA	EA	32.60
04.17.189.00	PAN,18",PERFORATED PIZZA	EA	34.70
04.17.192.00	PAN,14",PERFORATED PIZZA	EA	29.50
04.17.311.00	CHIP DEFLECTOR MACHO NACHO	EA	47.40
04.17.314.00	L.H. FLOOR MACHO NACHO	EA	73.70
04.17.316.00	BLOWER HEATER ASSY MACHO NACHO	EA	84.20
04.17.325.00	FST-1-MN FRONT FACE ASSY	EA	205.30
04.17.326.00	LH FRONT FACE MTG ASSY	EA	41.10
04.17.327.00	RH FRONT FACE MTG ASSY	EA	41.10
04.17.334.00	FS WATER RESERVOIR ASY W/DRAIN	EA	211.60
04.17.400.00	CHICKEN BASKET WFST	EA	52.60
04.17.434.00	WFST DOOR SEAL ASSY 24.875" LG	EA	40.00
04.17.440A.00	WFST-1X,2X REMOVABLE SHELF	EA	98.70
04.17.480.00	WFST SS CABLE W/10-24 FITTINGS	EA	56.80
04.17.616A.00	SERVICE FSD MALE HINGE PIN A	EA	9.20
04.17.616B.00	SERVICE FSD MALE HINGE PIN B	EA	9.20
04.17.625.00	WATER TANK ASSY FSD,SERVICE	EA	111.80
04.17.640.00	FSD 3 TIER CIRCLE RACK W/RET	EA	180.30
04.17.641.00	FSDT 4 TIER CIRCLE RACK W/RET	EA	193.40
04.17.642.00	FSDT 5 TIER CIRCLE RACK W/RET	EA	221.10
04.17.649.00	SERVICE,STRIP-DOOR FSD/FSDT	EA	1.30
04.17.689.00	FSDT 3 TIER PRETZEL TREE	EA	243.00
04.17.709.00	FSDT 4 TIER CIR RACK W/RET	EA	221.10
04.17.733.00	2"DIA 3"CLEARANCE CASTER W/BRK	EA	57.90
04.17.825.01	AIR CHAMBER ASSY,1 ELEM,FSHC-7	EA	231.60
04.17.825.02	AIR CHAMBER ASSY,2 ELEM,FSHC-7	EA	310.50
04.19.149.00	2 PAN RACK FOR BUFFET WARMER	EA	151.60



Replacement Parts Price List in Canadian Dollars

January 1, 2012

Item	Description	Unit of Measure	List Price
04.19.150.00	3 PAN RACK FOR BUFFET WARMER	EA	193.40
04.19.254.00	HRDCTD SANDWICH BIN	EA	29.00
04.19.603.00	GRDW-1 CLEAR FRONT PANEL	EA	136.80
04.19.604.00	GRDW-1 CLEAR LH SIDE PANEL	EA	90.80
04.19.605.00	GRDW-1 CLEAR RH SIDE PANEL	EA	90.80
04.19.989.00	REMOV PANINI RACK,GRHW-1SGDN	EA	93.70
04.19.995.00	REMOV PANINI RACK,GRHW-1SGD	EA	85.50
04.20.019.00	SURF MTG HI-LMT BRKT RECON HTR	EA	3.90
04.22.030.00	PAN RAIL GRHD 2 PAN	EA	122.40
04.22.031.00	PAN RAIL GRHD 3 PAN	EA	135.50
04.22.032.00	PAN RAIL GRHD 4 PAN	EA	243.40
04.22.052.00	SANDWICH SLIDE-LOWER GRHD-XPD	EA	23.20
04.22.053.00	SANDWICH SLIDE-UPPER GRHD-XPD	EA	11.80
04.22.057.00	UPPER SEPARATOR GRHD-2PD	EA	17.10
04.22.058.00	UPPER SEPARATOR GRHD-3PD & 4PD	EA	11.80
04.22.059.00	LOWER SEPARATOR GRHD-2PD	EA	23.20
04.22.060.00	LOWER SEPARATOR GRHD-3PD & 4SD	EA	23.20
04.22.111.00	GRHD 2PD PAN STOP-UPPER SHELF	EA	15.00
04.22.112.00	GRHD 3PD PAN STOP-UPPER SHELF	EA	20.00
04.22.113.00	GRHD 4PD PAN STOP-UPPER SHELF	EA	31.60
04.22.400.00	GRHDH PAN DIVIDER	EA	31.60
04.22.403.00	GRHDH WATER TROUGH ASSY	EA	59.20
04.22.406.00	GRHDH 2 PAN ENCLOSURE ASSY	EA	172.40
04.22.407.00	GRHDH SINGLE PAN ENCL ASSY	EA	82.90
04.24.004.00	FDW BLK PTD HOOD	EA	47.40
04.24.020.00	FDW HINGE MOUNTING BRACKET	EA	6.60
04.24.023.00	FDW-1 HINGE PIN	EA	5.30
04.24.025.00	FDW 4 TIER CIRCLE RACK W/RET	EA	193.40
04.24.029.00	FDW 3 RING PIZZA RACK	EA	167.10
04.24.063.00	FDW-1-MN FRONT FACE ASSEMBLY	EA	164.20
04.24.064.00	FDW-1-MN CHIP DEFLECTOR	EA	35.80
04.24.261.00	FDWD-12 4 TIER CIRCLE RACK	EA	188.40
04.24.301.00	FDWD 4TCR WITH RETAINERS	EA	190.50
04.24.333.00	3 TIER PIZZA RACK W/RET,FDWD	EA	152.00
04.25.126.00	ADJUSTABLE END BRACKET HL	EA	10.50
04.25.225.00	RAISED WIRE GUARD 1/2 SZ CRMC	EA	26.30
04.25.226.00	RAISED WIRE GUARD FULL SZ CRMC	EA	55.30
04.25.265.00	CARVING STATION SS BASE PAN	EA	221.00
04.25.267.00	CUTTING BOARD,MAPLE 24x18x1.75	EA	221.10
04.25.374.00	BRKT,ADJ ANGLE,1-2" DROP	EA	10.00
04.25.413.00	SCOOP HOLDER,GRFHS HANG-ON	EA	44.20
04.25.528.00	PAN,MPWS-XX,14.25 X 24.25	EA	249.50
04.25.577.00	BRKT,ADJ ANGLE,2.5-3.5" DROP	EA	11.00
04.26.003.00	4"DIA 5"CLEARANCE CASTER RIGID	EA	42.10
04.26.004.00	4"DIA 5"CLEARANCE CASTER SWIVL	EA	67.10
04.26.007.00	PAN,FULL SIZE,ALUM,SHEET 18x26	EA	28.40
04.26.034.00	5"DIA 6"CLEARANCE CASTER SWIVL	EA	83.20
04.26.035.00	5"DIA 6"CLEARANCE CASTER RIGID	EA	75.00
04.26.092.00	PAN,1/2 SIZE,ALUM,SHEET 13x18	EA	28.60
04.28.077.00	PMG-100,200 EXH OUTLET BOX	EA	20.00



Replacement Parts Price List in Canadian Dollars

January 1, 2012

Item	Description	Unit of Measure	List Price
04.30.020.00	UPPER BEARING RETAINER	EA	5.30
04.30.021.00	LOWER BEARING RETAINER	EA	5.30
04.30.022.00	ADJUSTABLE BEARING RETAINER	EA	5.30
04.35.004.00	DRAWER SLIDE ROLLER	EA	9.50
04.37.100.00	WIRE GUARD,MODULAR,,260 ELEM	EA	11.00
04.37.101.00	WIRE GUARD,MODULR,SS,.260 ELEM	EA	21.10
04.37.145.00	WIRE GUARD,.260 ELEM,PLATED	EA	11.00
04.38.099.00	SERVICE,DIVIDER ROD,GR3	EA	22.40
04.38.361.00	GR3 DIV ROD 23.5"	EA	18.90
04.40.007.00	CLR GLASS PNL,17 1/16 X 19 1/4	EA	51.30
04.40.008.00	CLR GLASS PN,22 1/16 X 19 1/4	EA	53.90
04.40.010.00	CLR GLASS PN,19 1/4 X 23 1/16	EA	59.20
04.40.025.00	SIDE & REAR TEMP GLASS FDW	EA	44.70
04.40.038.00	END PANEL,GLASS,GRSDS-XXD	EA	76.30
04.40.041.00	END PANEL,GLASS,GRSDS-XX	EA	59.20
04.40.046.00	GRSDH-XXD END GLASS	EA	53.90
04.40.047.00	END PANEL,GLASS,GRSDH-XX	EA	59.20
04.40.049.00	CLEAR SIDE PANEL	EA	35.80
04.40.071.00	GRHD 3PD GLASS FRONT W/EDGING	EA	48.40
04.40.072.00	GRHD 4PD GLASS FRONT W/EDGING	EA	92.60
04.40.091.00	GRCD-XPD GLASS END PANEL	EA	76.30
04.40.105.00	GRCD-XP SIDE GLASS	EA	72.60
04.40.112.00	FSD SIDE GLASS	EA	43.40
04.40.114.00	FSDT SIDE GLASS	EA	44.70
04.40.121.00	END PANEL,GLASS,GR2SDS	EA	59.20
04.40.135.00	GRPWS-XX24D END GLASS	EA	57.90
04.40.158.00	GLASS,SIDE,GR2SDS FULL	EA	55.30
04.40.160.00	GR2SDH 12" SHELF SIDE GLASS	EA	50.50
04.40.202.00	END PANEL,GLASS,SDSD,12" OPEN	EA	135.80
04.40.234.00	END PANEL,GLASS,SDS-XXD,SIDESW	EA	132.60
04.40.254.00	GLASS,SIDE,FDWD,16.594X19.5	EA	48.70
04.40.295.00	GLASS,MIRROR PNL,GRCMW-1DH	EA	197.90
04.40.336.00	GLASS END,,RH,3SDS-XXT	EA	73.70
04.40.337.00	GLASS END,,LH,3SDS-XXT	EA	73.70
04.42.009.00	CONTROL BEZEL,INCLINED,UNPNTD	EA	36.80
04.42.009.02	CONTROL BEZEL,INCLINED,GRAY GR	EA	49.00
04.42.012.00	CONTROL PANEL,BASE,HWB	EA	28.40
04.42.013.00	CONTROL PANEL,HWB	EA	11.60
04.42.059.00	CNTL BEZEL,SMALL BOX,HWB,UNPTD	EA	3.00
04.42.110.00	T-STAT GUARD	EA	8.40
04.42.149.00	PAN,4 QT,SS	EA	73.70
04.44.007.00	HQT SINGLE SERVE RACK	EA	76.80
04.46.032.00	PAN,CONTAINER,SERVE RITE	EA	33.70
04.46.033.00	PAN,CARVING,1/1,SERV RITE	EA	137.90
04.46.039.00	REFLECTOR,SERVE RITE	EA	6.30
04.46.045.00	CUTTING BOARD,SERVE RITE	EA	163.20
04.48.083.00	SHELF RACK,ADJUSTABLE,LFST-48	EA	130.00
04.48.093.00	REMOVABLE SHELF,LFST-48	EA	151.00
04.48.103.00	WIRE RACK,FSHC-7,CHURCHS	EA	134.70
04.48.526.00	WIRE RACK,FSHC,SS	EA	81.00





Replacement Parts Price List in Canadian Dollars

January 1, 2012

Item	Description	Unit of Measure	List Price
05.01.018.00	LUBE REAR BEARING LUBE-SHC 624	EA	5.30
05.01.019.00	LUBE CHEMLUBE 645 SYN IMPRGNAT	EA	4.20
05.01.023.00	LUBE SYNTHETIC GEAR LUBRICANT	EA	8.40
05.02.003.00	BEARING TK INNER CLUTCH RACE	EA	47.40
05.02.004.00	BEARING ONE WAY ROLLER CLUTCH	EA	54.70
05.02.011.00	BEARING HUB ASSEMBLY	EA	17.10
05.02.012.00	BEARING FLANGED WFST	EA	6.00
05.03.003.00	CHAIN 40 PITCH W/LINK	EA	9.20
05.03.004.00	CHAIN SPRING CLIP CONN LINK	EA	2.60
05.03.006.00	CHAIN 34 PITCH W/LINK	EA	9.20
05.03.009A.00	CHAIN CONNECTOR LINK	EA	3.90
05.03.020.00	CHAIN 14 SINGLE STEEL JACK	FT	5.30
05.03.021.00	CHAIN 12 SINGLE STEEL JACK	FT	5.30
05.03.022.00	CHAIN S.S. TQ-300 CONVEYOR	EA	82.90
05.03.023.00	PIN PLT 1/8" X 1" GROOVE ZNC	EA	1.30
05.03.024.00	CHAIN S.S. TQ-700 CONVEYOR	EA	113.70
05.03.035.00	WIRE BELT,10x.5x72 LINKS	EA	110.50
05.03.036.00	WIRE BELT,10x.5x51 LINKS	EA	110.50
05.03.037.00	CHAIN 30 PITCH W/LINK	EA	9.20
05.03.038.00	CHAIN 35 PITCH	EA	9.20
05.03.039.00	CABLE PULLBOX PLUS 5LB	EA	39.00
05.03.046.00	WIRE BELT,14x.5x72 LINKS	EA	185.30
05.03.053.00	CHAIN,14 GA,6",SINGLE,STEEL	EA	2.10
05.03.054.00	S-HOOK,CLOSED,.121 X 1,STEEL	EA	0.50
05.03.055.01	MECHANICAL REEL,BASE MT,0.5LB	EA	150.50
05.03.055.02	MECHANICAL REEL,BASE MT,1.0LB	EA	150.50
05.03.056.00	CHAIN,ROLL,1/4P X 1/8W 14.5"L	EA	20.00
05.03.057.00	WIRE BELT,6.875x.5x51 LINKS	EA	93.70
05.04.002.00	SC PLT 10-32X5/16 PH PAN TCS F	EA	2.60
05.04.004.00	RIV ALUM 1/8 DRIVE	EA	1.30
05.04.005.00	SC PLT 8-32X5/16 ZNC PH	EA	0.10
05.04.022.00	BLT PLT 3/8-16X1 PKRZ SQ MACH	EA	0.70
05.04.028.00	NUT PLT 3/8-16 PKRZ HEX NUT	EA	0.10
05.04.047.00	NUT ALUM 10-32 HD RIVNUT CLSD	EA	1.30
05.04.059.00	NUT PLT 8-32 BNP CAPTIVE	EA	2.60
05.04.062.00	SC PLT 1/4-28X3/8 SL HX WS MS	EA	0.70
05.04.068A.00	NUT PLT 8-32 NI ACORN	EA	0.50
05.04.070.00	NUT PLT 10-32 ACORN LOW CROWN	EA	0.60
05.04.074.00	SC PLT 10-32X5/16 NI PH PN	EA	0.10
05.04.077.00	RING PLT 5/16 PUSH ON RETAIN	EA	0.70
05.04.087.00	SPC PLT 3/8-16X3/4 .48OD SHLDR	EA	3.40
05.04.105.00	NUT PLT 8-32 LOWCRWN ACORN 2PC	EA	0.50
05.04.117.00	SC SS 10-32X1-3/4 PH RD MACH	EA	1.30
05.04.118.00	SC SS 10-32X3 SL RD MACH	EA	1.30
05.04.128.00	SC SS 1/4-20X1-3/4 PH TR	EA	1.00
05.04.139.00	SC SS 8-32X3/8 WSHR HD THUMB	EA	3.90
05.04.140.00	SPC SS 10-32X3/16 THUMB	EA	5.30
05.04.144.00	SC SS 10-32X4 SL RD MACH	EA	3.90
05.04.145.00	SC SS 10-32x2-1/4 SL RD MACH	EA	3.60
05.04.146.00	SC SS 1/4-20 HINGE SCREW	EA	2.60

**Replacement Parts Price List in Canadian Dollars****January 1, 2012**

<b>Item</b>	<b>Description</b>	<b>Unit of Measure</b>	<b>List Price</b>
05.04.149.00	SPC SS 1/4-20X5/16 SHOULDER	EA	3.20
05.04.150.00	PIN-DIVIDER LOCATING,1/4-20,PLT	EA	3.90
05.04.151.00	WNUT CRS 1/4-20 DUAL SPUR	EA	2.60
05.04.153.00	SC PLT 1/4-28X3/4 PH PAN MACH	EA	1.30
05.04.163.00	NUT PLT 10-32 TRIC NUT	EA	1.10
05.04.201.00	BLT SS 1/4-20X1/2 HEX GRADE 2	EA	1.30
05.04.202.00	BLT SS 1/4-20X1 HEX GRADE 2	EA	2.40
05.04.203.00	SPC SS 1/4-20x1-1/4 HEX BOLT	EA	5.30
05.04.205.00	NUT PLT 1/4-20 KEPS NUT	EA	1.30
05.04.210.00	NUT SS 1/4-20 HEX ACORN	EA	1.30
05.04.211.00	SC SS 8-32X3/8 ONE WAY MACH	EA	1.30
05.04.219.00	SPC SS 10-32X.531 THUMB SCREW	EA	5.30
05.04.257.00	RING PLT .375 SNAP RETAIN WFST	EA	1.30
05.04.305.00	SPC SS 8-32X1/2 THUMBSCREW	EA	6.60
05.04.325.00	NUT SS 8-32 TINNERMAN FASTNER	EA	1.30
05.04.351.00	NUT SS 10-32 CAP NUT	EA	1.30
05.04.352.00	PIN SS .090 COTTER PIN	EA	1.30
05.04.354.00	HEYCO NYLON 6/6 HOSE CLAMP	EA	1.30
05.04.357.00	SPACER PLT #6X7/32X3/8 BRASS	EA	5.30
05.04.414.00	SC PLT 1/4-20x3/8 WING	EA	3.40
05.04.441.00	NUT SS 4-40 ACORN	EA	1.30
05.04.443.00	NUT SS 6-32 ACORN	EA	1.30
05.04.486.00	STUD SS 8-32X5/8 WELD SCREW	EA	1.10
05.04.535.00	SC PLT 8-32X3-1/2 PH PN MACH	EA	1.10
05.04.536.00	SC PLT 8-32X2-1/2 PH PN MACH	EA	1.00
05.04.549.00	SC SS 8X3/8 HX WSHR SMS,410	EA	0.50
05.04.550.00	HOSE CLAMP,1/2" BAND,.438-1.0	EA	1.10
05.06.002.00	RUB #4151 - CHANNEL EXTRUSION	FT	1.30
05.06.003.00	RUB 1-3/4" WHITE STOPPER	EA	2.60
05.06.005.00	GASKET 3CS ELEMENT	EA	2.10
05.06.006.00	RUB 1.0ID 2.5OD .188 BLK EPDM	EA	2.10
05.06.008.00	GROMMET BLACK MOLDED	EA	2.60
05.06.009.00	GASKET,STRAINER NUT NSF APPROV	EA	1.30
05.06.010.00	RUB BLACK HOSE ASSEMBLY	EA	72.40
05.06.010A.00	WASH NEOPRENE 80 DURO WHITE	EA	1.30
05.06.021.00	RUB WINDOW CHANNEL SEAL	FT	2.60
05.06.024.00	RUB GLASING CHANNEL 1/4"	FT	3.60
05.06.026.00	RUB 1-3/8" WHITE STOPPER	EA	2.40
05.06.028.00	GASKET, SILICONE, .125 X .500	FT	5.30
05.06.029.00	NUT RUB EXPANSION FS LW PROBE	EA	2.60
05.06.035.00	PLUG NEOPRENE SEAL CORNER POST	EA	3.90
05.06.036.00	LEG RUBBER FEET SUCTION W8-32	EA	1.10
05.06.038.00	LEG MOLDED TIP RUBBER FOOT	EA	1.30
05.06.039.00	RUB END CAP 15/64ID	EA	1.10
05.06.066.00	PMG 5/8" HOT WATER CONN GASK	EA	1.30
05.06.096.00	GASKET ELEMENT,BUNDLED	EA	15.00
05.06.097.00	NYLON COLLAR,POST BOT,SERVE RT	EA	1.10
05.06.098.00	NYLON COLLAR,POST,SERVE RITE	EA	1.00
05.06.099.00	ELLIP SPACER,POST,SERVE RITE	EA	1.10
05.07.004.00	SHAFT LOWER REAR DRIVE 3S	EA	29.50



Replacement Parts Price List in Canadian Dollars

January 1, 2012

Item	Description	Unit of Measure	List Price
05.07.005.00	SHAFT UPPER 3S	EA	29.50
05.07.006.00	SHAFT LOWER FRONT	EA	29.50
05.07.007.00	SHAFT 2/S CONVEYOR	EA	29.50
05.07.008.00	UPPER SHAFT 2/S CONVEYOR	EA	29.50
05.07.009.00	LOWER SHAFT 2/S CONVEYOR	EA	29.50
05.07.011.00	SHAFT REAR AXLE	EA	29.50
05.08.001.00	SPRING EXTENSION	EA	1.30
05.08.004.00	PIN PLT SEL-LOC SPRG 3/32X7/16	EA	1.30
05.08.005.00	SPRING COMPRESSION	EA	2.60
05.08.006.00	PIN SS SEL-LOC SPRING 1/8X3/4	EA	1.30
05.08.007.00	PIN PLT SEL-LOC SPRG 1/8X7/16	EA	1.30
05.08.008.00	PIN CRS 5/32x3/4 ALLOY GROOVE	EA	2.60
05.08.014.00	WIRE ROD .134 X 6.625" LG	EA	3.20
05.08.023.00	SPRING,HINGE,LH	EA	12.00
05.08.024.00	SPRING,HINGE,RH	EA	12.00
05.09.020.00	SPROCKET 10 TOOTH 3/8" BORE	EA	17.10
05.09.023.00	SPROCKET 11 TOOTH DRIVE	EA	20.00
05.09.025.00	SPROCKET 14 TOOTH .312 BORE	EA	26.30
05.09.027.00	SPROCKET 10 TOOTH .312 BORE	EA	26.30
05.09.028.00	SPROCKET 12 TOOTH .312 BORE	EA	28.90
05.09.029.00	SPROCKET 12 TOOTH .375 BORE	EA	28.90
05.09.030.00	SPROCKET 14 TOOTH .375 BORE	EA	28.00
05.09.031.00	SPROCKET W/CLUTCH ASSEMBLY	EA	68.00
05.09.032.00	SPROCKET 10 TOOTH HARD 3/8 ID	EA	20.00
05.09.033.00	SPROCKET 17 TOOTH .312 BORE	EA	26.30
05.09.040.00	SPROCKET	EA	32.90
05.09.041.00	CONVEYOR DRIVE GEAR,TQ-300SRVC	EA	49.50
05.09.042.00	CHAIN CONVEYOR IDLER	EA	17.10
05.09.045.00	SPROCKET 17 TOOTH .375 BORE	EA	29.00
05.09.055.00	SPROCKET,CONVEYOR,TM-10H	EA	55.80
05.09.056.00	SPROCKET,MOTOR,TM,16 TOOTH	EA	33.70
05.10.003.00	STRAP BOOSTER TANK 36"	EA	14.70
05.11.004.00	WASH NYL BLACK NYLON THRUST	EA	6.60
05.11.006.00	WASH NYL WHITE 1/2"X.317X.032	EA	1.30
05.11.007.00	WASH NYL WHITE 1/2"X.317X.062	EA	1.30
05.11.008.00	WASH PLT 1/4" ZNC LOCKWASHER	EA	1.30
05.11.020.00	WASH SS 3/4" FLAT PUNCHED	EA	2.60
05.11.022.00	SPACER 3/8X1/2 ZNC PLT CEM	EA	1.30
05.11.033.00	WASH NYL .365-.370ID .5 OD	EA	1.20
05.11.035.00	RING SS AXLE RETAINING E-RING	EA	2.60
05.30.001.00	KNOB,MANUAL ADVANCE-TOASTER	EA	17.10
05.30.005.00	MAGNET SINGLE MOLDED PLASTIC	EA	7.90
05.30.007.00	LEG 4" BLACK COUNTER APPLIANCE	EA	11.20
05.30.009A.00	NUT BRS 1-1/2" BRASS LOCKNUT	EA	9.20
05.30.013.00	PLUG,BLACK CAP,1" DIA TUBE	EA	1.30
05.30.018.00	KNOB INFINITE SWITCH GR & GRHD	EA	10.50
05.30.019.00	KNOB,INF SWITCH TOASTER FRS	EA	10.50
05.30.020.00	KNOB,1.5 OD .25 ID SET SCREW	EA	10.50
05.30.021.00	KNOB,FR CONTROL	EA	11.80
05.30.026.00	MAGNET FOR FDW-1	EA	5.70



Replacement Parts Price List in Canadian Dollars

January 1, 2012

Item	Description	Unit of Measure	List Price
05.30.027.00	MAGNET STRIKER PLATE FDW-1	EA	9.20
05.30.032.00	KNOB DW D-10 1/4-20 STUD 11406	EA	5.30
05.30.039.00	KNOB,BASE THERMOSTAT BULB&CAP	EA	6.60
05.30.040.00	LEG 2-1/2" BLACK PLASTIC ADJ.	EA	8.20
05.30.042.00	KNOB,ELEC INFINITE POTENT	EA	11.80
05.30.043.00	KNOB FOR EGO INFINITE SWITCH	EA	8.00
05.30.044.00	LEG 3/8-16x3/8 BLK RUBBER FOOT	EA	2.60
05.30.047.00	KNOB HDW CONTROL EGO	EA	10.50
05.30.048.00	KNOB,10-32x3/8 STUD,BLACK	EA	9.20
05.30.064.00	2 1/2" DIA RUBBER FOOT W/WASH	EA	7.90
05.30.069.00	LEG 6" BLACK PLASTIC 1/2"-13	EA	13.70
05.30.070.00	LEG 6" SS 1/2"-13	EA	42.10
05.30.082.00	KNOB,.906 OD .25 ID,SET SCREW	EA	9.50
05.30.126.00	KNOB,CTRL,W/SETSCREW,SERV-RITE	EA	11.00
05.30.150.00	SERVICE,4"DIA 5"CLR CAST SWIVL	EA	21.10
07.01.034.00	SW PLATE FOR MULTI INF SW	EA	4.50
07.01.035.00	GR W/MULT TOG SW PLATE	EA	4.50
07.01.058.00	TOGGLE SWITCH PLATE ON-OFF	EA	1.30
07.01.179.00	HDW CONTROL FACE PLATE	EA	15.00
07.01.180.00	HDW HANDLE LOGO	EA	2.60
07.01.200.00	SWITCH PLATE,ELEC INFINITE	EA	5.30
07.01.300.00	TOGGLE SWITCH PLATE,DL,I-O	EA	3.40







# HATCO AUTHORIZED PARTS DISTRIBUTORS

## ALABAMA

Jones McLeod Appl. Svc.  
Birmingham 205-251-0159

## ARIZONA

Service Solutions Group  
Phoenix 602-234-2443

Byassee Equipment Co.  
Phoenix 602-252-0402

## CALIFORNIA

Industrial Electric  
Commercial Parts & Service, Inc.  
Huntington Beach 714-379-7100

Chapman Appl. Service  
San Diego 619-298-7106

P & D Appliance  
Commercial Parts & Service, Inc.  
S. San Francisco 650-635-1900

## COLORADO

Hawkins Commercial Appliance  
Englewood 303-781-5548

## FLORIDA

Whaley Foodservice Repair  
Jacksonville 904-725-7800

3Wire Nass Service Co., Inc.  
Orlando 407-425-2681

B.G.S.I.  
Pompano Beach 954-971-0456

Comm. Appliance Service  
Tampa 813-663-0313

## GEORGIA

TWC Services  
Mableton 770-438-9797

Heritage Service Group  
Norcross 866-388-9837

Southeastern Rest. Svc.  
Norcross 770-446-6177

## HAWAII

Burney's Comm. Service, Inc.  
Honolulu 808-848-1466

Food Equip Parts & Service  
Honolulu 808-847-4871

## ILLINOIS

Parts Town  
Lombard 708-865-7278

Eichenauer Elec. Service  
Decatur 217-429-4229

Midwest Elec. Appl. Service  
Elmhurst 630-279-8000

Cone's Repair Service  
Moline 309-797-5323

## INDIANA

GCS Service  
Indianapolis 317-545-9655

## IOWA

Electric Motor Service Co.  
Davenport 319-323-1823

Goodwin Tucker Group  
Des Moines 515-262-9308

## KENTUCKY

Service Solutions Group  
Lexington 859-254-8854

Service Solutions Group  
Louisville 502-451-5411

## LOUISIANA

Chandlers Parts & Service  
Baton Rouge 225-272-6620

## MARYLAND

Electric Motor Service  
Baltimore 410-467-8080

GCS Service  
Silver Spring 301-585-7550

## MASSACHUSETTS

Ace Service Co., Inc.  
Needham 781-449-4220

## MICHIGAN

Bildons Appliance Service  
Detroit 248-478-3320

Commercial Kitchen Service  
Bay City 517-893-4561

Midwest Food Equip. Service  
Grandville 616-261-2000

## MINNESOTA

GCS Service  
Plymouth 800-345-4221

## MISSOURI

General Parts  
Kansas City 816-421-5400

Commercial Kitchen Services  
St. Louis 314-890-0700

Kaemmerlen Parts & Service  
St. Louis 314-535-2222

## NEBRASKA

Anderson Electric  
Omaha 402-341-1414

## NEVADA

Burney's Commercial  
Las Vegas 702-736-0006

Hi. Tech Commercial Service  
N. Las Vegas 702-649-4616

## NEW JERSEY

Jay Hill Repair  
Fairfield 973-575-9145

Service Plus  
Flanders 973-691-6300

## NEW YORK

Acme American Repairs, Inc.  
Brooklyn 718-456-6544

Alpro Service Co.  
Brooklyn 718-386-2515

Appliance Installation  
Buffalo 716-884-7425

Duffy's Equipment Services, Inc.  
Buffalo 800-836-1014

3Wire Northern  
Plattsburgh 800-634-5005

Duffy's Equipment Services, Inc.  
Sauquoit 800-836-1014

J.B. Brady, Inc.  
Syracuse 315-422-9271

## NORTH CAROLINA

Authorized Appliance  
Charlotte 704-377-4501

## OHIO

Akron/Canton Comm. Svc. Inc.  
Akron 330-753-6635

Service Solutions Group  
Cincinnati 513-772-6600

Commercial Parts and Service  
Columbus 614-221-0057

Electrical Appl. Repair Service  
Brooklyn Heights 216-459-8700

E. A. Wichman Co.  
Toledo 419-385-9121

## OKLAHOMA

Hagar Rest. Service, Inc.  
Oklahoma City 405-235-2184

Krueger, Inc.  
Oklahoma City 405-528-8883

## OREGON

Ron's Service, Inc.  
Portland 503-624-0890

## PENNSYLVANIA

Elmer Schultz Services  
Philadelphia 215-627-5401

FAST Comm. Appl. Service  
Philadelphia 215-288-4800

Appliance Installation & Service  
Pittsburgh 412-809-0244

K & D Service Co.  
Harrisburg 717-236-9039

Electric Repair Co.  
Reading 610-376-5444

## RHODE ISLAND

Marshall Electric Co.  
Providence 401-331-1163

## SOUTH CAROLINA

Whaley Foodservice Repair  
W. Columbia 803-791-4420

## TENNESSEE

Camp Electric  
Memphis 901-527-7543

## TEXAS

GCS Service  
Fort Worth 800-433-1804

Armstrong Repair Service  
Houston 713-666-7100

Cooking Equipment Specialist  
Mesquite 888-866-9276

Refrigerated Specialist, Inc.  
Mesquite 888-866-9276

Commercial Kitchen Repair Co.  
San Antonio 210-735-2811

## UTAH

La Monica's Rest. Equip. Service  
Murray 801-263-3221

## VIRGINIA

Daubers  
Norfolk 757-855-4097

Daubers  
Springfield 703-866-3600

## WASHINGTON

3Wire Restaurant Appliance  
Seattle 800-207-3146

## WISCONSIN

A.S.C., Inc.  
Madison 608-246-3160

A.S.C., Inc.  
Milwaukee 414-543-6460

## CANADA

### ALBERTA

Key Food Equipment Service  
Edmonton 780-438-1690

### BRITISH COLUMBIA

Key Food Equipment Service  
Vancouver 604-433-4484

Key Food Equipment Service  
Victoria 250-920-4888

### MANITOBA

Air Rite, Inc.  
Winnipeg 204-895-2300

### NEW BRUNSWICK

EMR Services, Ltd.  
Moncton 506-855-4228

### ONTARIO

R.G. Henderson Ltd.  
Toronto 416-422-5580

Choquette - CKS, Inc.  
Ottawa 613-739-8458

### QUÉBEC

Choquette - CKS, Inc.  
Montreal 514-722-2000

Choquette - CKS, Inc.  
Québec City 418-681-3944

## UNITED KINGDOM

Marren Group  
Northants +44(0)1933 666233

HATCO CORPORATION  
P.O. Box 340500  
Milwaukee, WI 53234-0500 U.S.A.  
(800) 558-0607 (414) 671-6350  
Parts and Service Fax (800) 690-2966  
International Fax (414) 671-3976  
partsandservice@hatcocorp.com  
www.hatcocorp.com