

Fry Stations

*Supermarkets & Delis
Restaurants & Cafés • Clubs & Bars*



GRFF in optional Brilliant Blue Gloss finish and **UGFF** in optional Glossy Gray Gloss Finish *pg. 106*



GRFFL with optional 9" display sign holder (sign not included) and *Designer Warm Red* color, and accessory food pan *pg. 106*



GRFHS-PT26 with accessory 8-pleat hardcoated fry box ribbon (scoop not included) *pg. 108*



GRFHS-PTT21 *pg. 108*



GRFSCL-18 with swing-away post mount, cord with plug and accessory food pan *pg. 108*



MPWS-36 shown with optional fry bin insert *pg. 110*

Portable Foodwarmers

Opt for the versatility of Hatco's Glo-Ray® and Ultra-Glo® Portable Foodwarmers. With heat from above, below or both, these foodwarmers offer design flexibility without sacrificing food product quality. Ideal for use next to fry stations, drive-through windows and service areas that require frequent and easy access.

- Portable – ready to plug in and use
- Versatile – available in many sizes, styles and heat sources to fit your needs
- Flexible – both top and bottom heat available
- Available with incandescent bulbs containing special protective coating to guard against food contamination

- Ceramic heating elements provide more distance between the heat source and the holding pan (UGFF series only)
- Toggle switch is standard; infinite switch optional on GRFF series
- All base heat units (GR-B, GRFFB and UGFFB) have a preset automatic thermostat to maintain consistent temperatures



GR-B Heated Base with accessory sheet pan

GRFFB with optional infinite switch and accessory food pans



UGFFL in optional Radiant Red Gloss finish with accessory fry ribbon and food pan



GLO-RAY® PORTABLE FOODWARMERS

Model	No. of Bulbs	Dimensions W x D x H	Voltage Single Phase	Watts	Plug	Approx. Ship Weight
GR-B	—	12¾" x 22" x 2¼"	120	250	NEMA 5-15P	14 lbs.
GRFF	—	12¾" x 24" x 15⅞"	120	500	NEMA 5-15P	14 lbs.
GRFFL	2	12¾" x 24" x 15⅞"	120	620	NEMA 5-15P	14 lbs.
GRFFB [⚡]	—	12¾" x 24" x 16"-20"	120	750	NEMA 5-15P	29 lbs.
GRFFBL [⚡]	2	12¾" x 24" x 16"-20"	120	870	NEMA 5-15P	34 lbs.

[⚡] Standard clearance is 14". Specify 12" or 16" if required.

All Portable Models Feature:

Models Shipped with: 6' cord and plug.

Cord Location: GR-B, GRFFB, GRFFBL: Back, lower middle.

GRFF, GRFFL: Back, upper middle.

ULTRA-GLO® PORTABLE FOODWARMERS WITH CERAMIC ELEMENTS

Model	No. of Bulbs	Dimensions W x D x H	Voltage Single Phase	Watts	Plug	Approx. Ship Weight
UGFF	—	12¾" x 22¼" x 18⅞"	120	750	NEMA 5-15P	15 lbs.
UGFFL	2	12¾" x 22¼" x 18⅞"	120	870	NEMA 5-15P	17 lbs.
UGFFB	—	12¾" x 22½" x 22"	120	1000	NEMA 5-15P	25 lbs.
UGFFBL	2	12¾" x 22½" x 22"	120	1120	NEMA 5-15P	34 lbs.

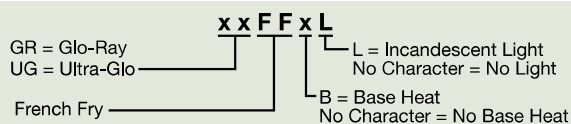
All Ceramic Portable Models Feature:

Models Shipped with: 6' cord and plug.

Cord Location: UGFF, UGFFL: Back, upper middle.

UGFFB, UGFFBL: Back, lower middle.

OPTIONS AND ACCESSORIES – PAGE 107





UGFFB with accessory food pan (perforated pan not available)

OPTIONS (available at time of purchase only)

Designer Colors (one color per unit, heated base is not powdercoated, not available for GR-B models)

Non-standard colors are non-returnable – Clear Anodized standard –

RED	Warm Red
BLACK	Black
GRAY	Gray Granite
WHITE	White Granite
NAVY	Navy Blue
GREEN	Hunter Green
COPPER	Antique Copper

Gloss Finishes (one color per unit, heated base is not painted, not available for GR-B models)

Non-standard colors are non-returnable –

RRED	Radiant Red
GGOLD	Gleaming Gold
GGRAY	Glossy Gray
BBLUE	Brilliant Blue
BBLACK	Bold Black

Clearance (from bottom of Glo-Ray® to top of heated surface) – GRFFB, GRFFBL only – 14" standard – 12" 16"

SIGN HOLD	Sign Holder for GRFFL model with Back Toggle only (requires 9"W x 5½"H x ¼"D sign, which is not included and adds 3" to height of unit)
INF	Infinite Control (not available on models GR-B, UGFF, UGFFL, UGFFB or UGFFBL)
HAL	60 Watt Halogen Bulb in lieu of standard Display Light

ACCESSORIES (available for purchase at any time)

5PLTBOX	Five-Pleat Hardcoated French Fry Box Ribbon – 19¼"W x 9¼"D x 2"H
8PLTBAG	Eight-Pleat Hardcoated French Fry Bag Ribbon – 19¼"W x 9¼"D x 2"H

Chef LED 120V adjustable bulb – bulbs must be rotated down – excludes any model without existing bulbs –

CLED-3000-120 Similar to warm Halogen light **CLED-4000-120** Similar to cool Fluorescent light

FOOD PANS AND TRIVETS – PAGE 245

COLORS AND FINISHES – INSIDE BACK COVER



CLED-3000 and -4000 Accessory



Glo-Ray® Fry Stations

Hatco offers convenient Glo-Ray® Fry Stations that can be placed where they are most needed – next to a fryer! Glo-Ray heat technology offers the ability to keep fried foods at optimum temperatures, ready to serve, without cooking or drying them out.

- Accessory hardcoated fry ribbons stage boxed or bagged products for quick-service areas
- Thermostatically-controlled heated base maintains uniform holding temperatures from below (GRFHS series)
- Portable models including pass-through style (GRFHS series)
- Sectional divider permits holding of multiple products simultaneously (GRFHS series)
- Ceramic elements and slotted holding bin prevent soggy product (GRFHS series)
- Accessory hardcoated fry ribbons absorb more radiant heat than stainless steel, can be up to 15° to 20°F hotter (GRFHS series)
- Fry Station Warmers (GRFSC, GRFS series) feature a built-in top heat source and a swing-away post mount
- GRFSC series available with ceramic heating element, while the GRFS series has a metal sheathed element
- Variety of clearances (GRFS series)
- GRFS series has power toggle switch, cord and plug, plus optional infinite control

GRFHS-21 with optional right-hand cutout for fry basket and accessory fry ribbon (left-hand cutout also available)



GRFHS-PTT21

GRFHS-16

GRFSC-18
Swing-away
post mount

PORTABLE FRY HOLDING STATIONS

Model	No. of Bulbs	Dimensions (W x D x H)	Voltage (Single Phase)	Watts	Plug	Approx. Ship Weight
GRFHS-16**	2	16 ³ / ₈ " x 22" x 22 ³ / ₁₆ "	120	1090	NEMA 5-15P	51 lbs.
GRFHS-21**	2	21 ¹ / ₈ " x 28 ¹ / ₂ " x 22 ³ / ₄ "	120	1200	NEMA 5-15P	63 lbs.
GRFHS-22	2	21 ¹ / ₈ " x 18" x 17 ⁵ / ₁₆ "	120	1030	NEMA 5-15P	44 lbs.
GRFHS-26**	2	26 ⁷ / ₁₆ " x 23 ³ / ₁₆ " x 22 ³ / ₄ "	120	1200	NEMA 5-15P	66 lbs.
GRFHS-PT16*	2	21 ¹ / ₈ " x 23 ¹ / ₄ " x 24 ⁵ / ₈ "	120	1090	NEMA 5-15P	60 lbs.
GRFHS-PT26*	2	29 ⁷ / ₈ " x 22 ¹ / ₁₆ " x 24 ⁵ / ₈ "	120	1440	NEMA 5-15P	64 lbs.
GRFHS-PT26*	2	29 ⁷ / ₈ " x 22 ¹ / ₁₆ " x 26 ⁵ / ₈ "	120	1440	NEMA 5-15P	64 lbs.
GRFHS-PTT16*	2	16 ³ / ₄ " x 22 ⁵ / ₈ " x 22 ¹ / ₂ "	120	1300	NEMA 5-15P	65 lbs.
GRFHS-PTT21**	2	22 ³ / ₄ " x 38" x 22 ¹ / ₂ "	120	1740	NEMA 5-15P	100 lbs.

** Add 1³/₄" to width if ordering Scoop Holder.

* Standard with fixed scoop holder (not accessory FHS-SH).

* Includes a built-in 6" deep heated food holding base (4" is standard on all other models).

All Portable Fry Holding Station Models Feature:

Plug: GRFHS-PTT21 uses NEMA 5-20P in Canada.

Models Shipped with: One slotted holding bin and one sectional divider.

Cord Location: GRFHS-16, -21, -22, -26, -PT16, -PT26, -PTT16: Back side, lower right corner.

GRFHS-PTT21: Lower right-hand side.



GRFS, GRFSL, GRFSC, GRFSL
with swing-away post mount
and cord with plug

FRY STATION WARMERS

Model	No. of Bulbs	Dimensions (W x D x H)	Voltage (Single Phase)	Watts	Plug	Approx. Ship Weight
GRFSC-18*	—	6" x 18" x 19 ¹ / ₄ "-22 ¹ / ₂ "	120	750	NEMA 5-15P	11 lbs.
GRFSL-18*	2	9" x 18" x 19 ¹ / ₄ "-22 ¹ / ₂ "	120	870	NEMA 5-15P	13 lbs.
GRFSCR-18*	—	6" x 18" x 19 ¹ / ₄ "-22 ¹ / ₂ "	120	750	—	12 lbs.
GRFSLR-18*	2	9" x 18" x 19 ¹ / ₄ "-22 ¹ / ₂ "	120	870	—	13 lbs.
GRFS-24*	—	6" x 24" x 12 ¹ / ₂ "-15 ¹ / ₂ "	120	500	NEMA 5-15P	10 lbs.
GRFSL-24*	2	9" x 24" x 12 ¹ / ₂ "-15 ¹ / ₂ "	120	620	NEMA 5-15P	13 lbs.
GRFSR-24*	—	6" x 24" x 12 ¹ / ₂ "-15 ¹ / ₂ "	120	500	—	10 lbs.
GRFSLR-24*	2	9" x 24" x 12 ¹ / ₂ "-15 ¹ / ₂ "	120	620	—	13 lbs.

* Specify clearance of 16³/₄", 18" (standard) or 20" when ordering.

* Fry Station Warmer without cord and plug, UL recognized. Supply wires through mounting post.

* Specify clearance of 10", 11", 12" or 13" (standard) when ordering.

All Fry Station Warmer Models Feature:

Toggle Switch Location: Ceramic Heating Element Models: Back of unit.

Metal Sheathed Heating Element Models: Front of unit.

Cord Location GRFSC-18, GRFSL-18, GRFS-24 and GRFSL-24: Back, upper middle.

OPTIONS AND ACCESSORIES – PAGE 109

GRFHS - PT x x

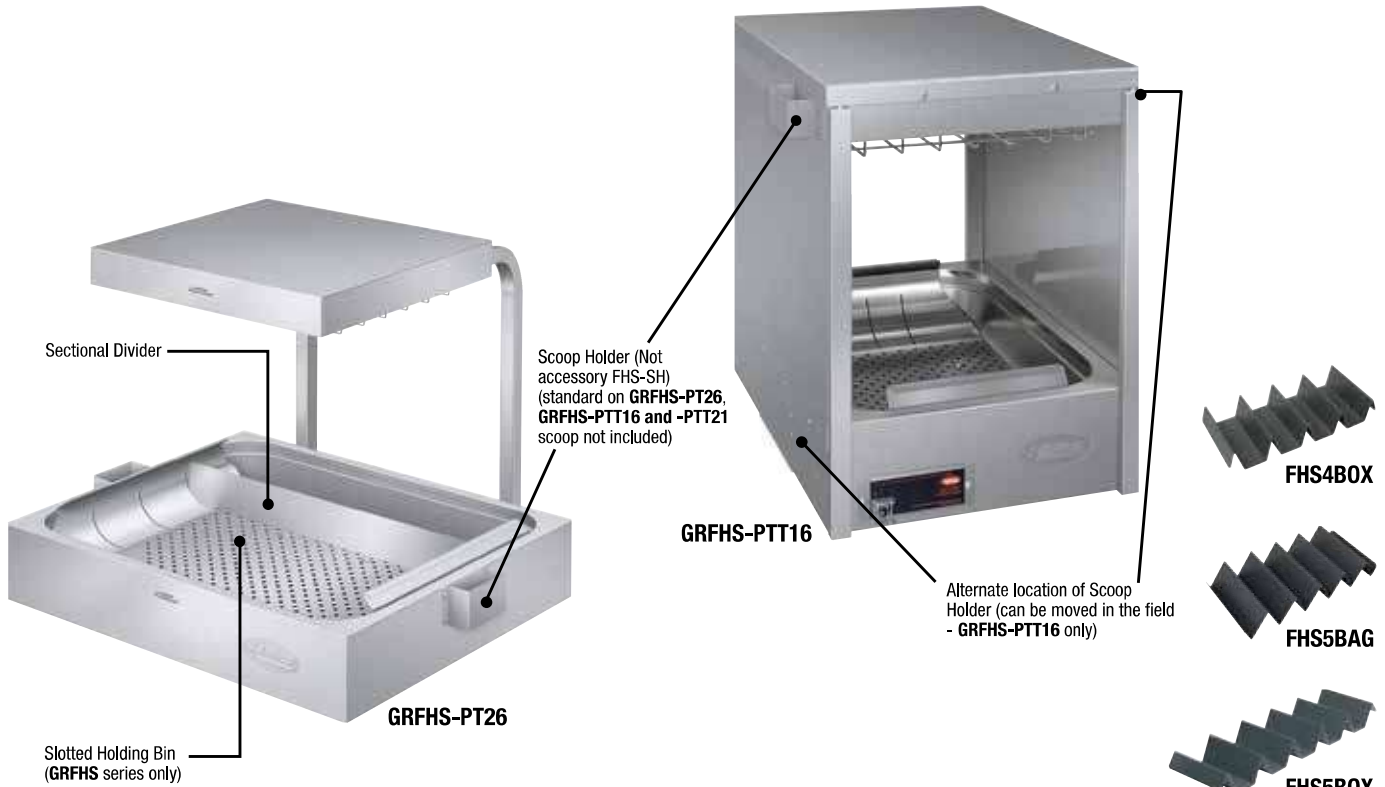
Glo-Ray _____
Fry Holding Station _____

_____ Width (inches)
No Characters = Bin
PT = Pass -Through
PTT = Pass-Through Tunnel

GRFSC L R - x x

Glo-Ray _____
Fry Station _____
Ceramic Heating Element _____

_____ Depth of Unit (inches)
UL Recognized
Incandescent Light



OPTIONS (available at time of purchase only)

FHS-CUT	Right- or Left-Hand Cutout for Fry Basket – must specify side at time of order Adds 1 $\frac{1}{16}$ " to width of unit (GRFHS-16, -21, -26 models only)
INF	Infinite Control (metal sheathed GRFS models only)
HAL	60 Watt Halogen Bulb in lieu of standard Display Light

ACCESSORIES (available for purchase at any time)

FHS4BOX	Four-Pleat Hardcoated Fry Box Ribbon (All models) – 10 $\frac{3}{4}$ "W x 5"D x 1 $\frac{3}{4}$ "H
FHS5BAG	Five-Pleat Hardcoated Fry Bag Ribbon (All models) – 11 $\frac{1}{4}$ "W x 5"D x 1 $\frac{7}{8}$ "H
FHS5BOX	Five-Pleat Hardcoated Fry Box Ribbon (GRFHS-21, -PT26, -PTT16, -PTT21) – 17 $\frac{1}{2}$ "W x 5"D x 1 $\frac{7}{8}$ "H
FHS6BAG	Six-Pleat Hardcoated Fry Bag Ribbon (GRFHS-21, -PT26, -PTT16, -PTT21) – 13 $\frac{3}{4}$ "W x 5"D x 2"H
FHS6BB	Six-Pleat Hardcoated Fry Box/Bag Ribbon (GRFHS-21, -PT26, -PTT16, -PTT21) – 17 $\frac{1}{4}$ "W x 5"D x 1 $\frac{3}{4}$ "H
FHS7BAG	Seven-Pleat Hardcoated Fry Bag Ribbon (GRFHS-21, -PT26, -PTT21) – 17 $\frac{7}{8}$ "W x 5"D x 1 $\frac{7}{8}$ "H
PTT16-10BAG	Ten-Pleat Hardcoated Hashbrown Ribbon – (GRFHS-PT26, -PTT21) – 15"W x 3 $\frac{3}{8}$ "D x 1 $\frac{3}{4}$ "H
5BH	5" Side-by-Side Bag Holder (GRFHS-21)
FHS-SH	Scoop Holder – adds 1 $\frac{1}{4}$ " to width of unit – Differs from standard on GRFHS-PT26, -PTT16 & -PTT21 models, not available for GRFHS-22 (Scoop Holder on GRFHS-PTT16 can be moved to two alternate locations in the field)
FHSDIV1	Sectional Divider – 16" W x 3 $\frac{1}{4}$ " H – GRFHS-16, -26 and -PTT16 models

Chef LED 120V adjustable bulb – bulbs must be rotated down –

CLED-3000-120 Similar to warm Halogen light **CLED-4000-120** Similar to cool Fluorescent light

FOOD PANS AND TRIVETS – PAGE 245



CLED-3000 and -4000
Accessory



FHS-SH

Multi-Product Warming Stations

Hatco's redesigned Multi-Product Warming Station safely holds hot fried foods at optimum serving temperatures in kitchen work areas. The unit is designed for maximum durability and performance with minimum maintenance.

- New removable left/right side panel
- New wider, deeper side openings
- Easy access to food product
- Coated shatter-resistant incandescent lights enhance brilliant product display while safeguarding food from bulb breakage

ENDLESS POSSIBILITIES OF CONFIGURATION

Incremental spacing between portable dividers is 5/8"



Shown with accessory fry bin insert and standard detachable side panel on right side



Shown with optional fry pans, and accessory angled riser and scoop holder (plastic pans not available)



Shown with optional fry pans, accessory fry ribbon on angled riser and accessory scoop holder



Shown with accessory fry ribbons on angled risers, fry pan and scoop holder (plastic pans not available)



MPWS-36 with accessory angled risers, fry pan and trivet (plastic pans not available)

MULTI-PRODUCT WARMING STATIONS

Model	No. of Bulbs	Dimensions W x D x H	Watts		Plug	Approx. Ship Weight
			120/208V	120/240V		
MPWS-36	4	37 ⁷ / ₁₆ " x 24 ¹ / ₁₆ " x 32 ³ / ₄ "	2773	2755	NEMA L14-20P	152 lbs.
MPWS-45	4	45 ⁷ / ₁₆ " x 24 ¹ / ₁₆ " x 32 ³ / ₄ "	2799	2780	NEMA L14-20P	170 lbs.

All Multi-Product Warming Station Models Feature:

Models Shipped with: 4" adjustable legs.

Cord Location: Back side, upper left corner.

OPTION CAPACITIES

Model	Fry Pan with Trivet	Angled Risers
MPWS-36	1	3
	2	1
	0	5
MPWS-45	1	4
	2	2
	0	6

OPTIONS (available at time of purchase only)

HAL 60 Watt Halogen Bulb in lieu of standard Display Light

ACCESSORIES (available for purchase at any time)

FHS4BOX	Four-Pleat Hardcoated Fry Box Ribbon – 10 ³ / ₄ "W x 5"D x 1 ¹ / ₄ "H
FHS5BAG	Five-Pleat Hardcoated Fry Bag Ribbon – 11 ¹ / ₄ "W x 5"D x 1 ¹ / ₈ "H
5BH	5" Side-by-Side Bag Holder
FHS-SH	Scoop Holder
MPWS-RISER	Angled Riser
MPWS-PT	Fry Pan and Trivet
MPWS36BIN	Full Fry Bin Insert for MPWS-36 unit only (includes Drip Tray, Perforated Insert and 3 Dividers)
MPWS45BIN	Full Fry Bin Insert for MPWS-45 unit only (includes Drip Tray, Perforated Insert and 4 Dividers)

Chef LED 120V adjustable bulb – bulbs must be rotated down –

CLED-3000-120 Similar to warm Halogen light **CLED-4000-120** Similar to cool Fluorescent light

FOOD PANS AND TRIVETS – PAGE 245



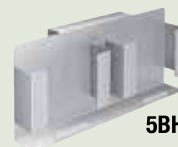
CLED-3000 and -4000
Accessory



FHS4BOX



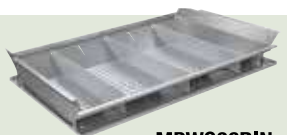
FHS5BAG



5BH



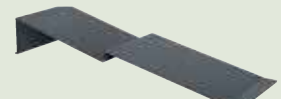
FHS-SH



MPWS36BIN



MPWS-PT



MPWS-RISER