



Induction Solutions

Cafeterias • Buffets
Supermarkets & Delis • Restaurants & Cafés
Clubs & Bars



IRNG-PC1-36 in standard finishes *pg. 2*



Rapide Cuisine® Countertop High-Powered/Heavy-Duty Induction Hobs

Hatco's Rapide Cuisine® High-Powered/Heavy-Duty Induction Hob offers industry leading features and true back of house power in a commercial kitchen proof package.

The unit features our Magnetic Power System (MPS) to deliver the highest power in its class! It has User Programmable Presets (UPP) for repeat menu items and a food temperature probe for more accurate cooking, plus a timer, high resolution color display and convenient power and temperature modes.

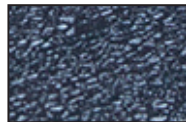
- Commercial kitchen ready. Heavy gauge stainless steel housing with side impact protection for the top
- Four surface temperature sensors offer the most accurate control in its class
- Culinary equivalent of up to 31,000 BTUs gas
- High resolution TFT (thin film transistor) display instantly advises the operator of precise power (1 to 100), temperature (°C or °F in one degree increments) and time control (30 seconds to 10 hours)
- Programmable mode where the operator can create preset programs for consistent cooking cycles
- Includes a grease filter and features conformal coated boards
- Easy to use color-coded selectable functions
- Large adaptive control for precise, fine control (slow turns) to spanning the full range in a single twist (fast turns)
- Pan Sense Technology (PST) activates the unit only when a suitable pan is placed on top
- Patterned, glass-ceramic top that is durable, easy to clean and helps scratches from heavy use become less noticeable
- Easy to clean, fully-sealed top stops grease or moisture from penetrating the unit, even if the top gets broken
- Automatic shut-off to prevent overheating
- Withstands high ambient kitchen temperatures up to 51°C
- USB port for downloading updates or adding Modes from our website
- 1800 mm cord with plug



IRNG-PC1-36



Includes a food temperature probe which facilitates highly accurate cooking



Close up of patterned black glass-ceramic top - helps prevent noticeable scratches due to heavy use

| Model | Dimensions W x D x H | Voltage Single Phase | Watts | Ship Weight† |
|-------------|-------------------------|-------------------------|----------------|--------------|
| IRNG-PC1-36 | 352 x 471 x 94 mm | 220/230/240 | 3300/3450/3600 | 10 kg |

† Shipping weights are approximate.

All Countertop High-Powered/Heavy-Duty Hob Models Feature:

Magnetic Pan Size: Maximum pan size: 356 mm; minimum pan size: 102 mm.

Models Shipped with: A 1800 mm cord & plug set and a temperature probe.

Cord Location: Rear left bottom base corner.

TWO (2) YEAR REPLACEMENT WARRANTY
CONTACT HATCO SERVICE TEAM FOR DETAILS.





Scan with web-enabled
mobile device to visit
www.hatcocorp.com

Hatco Corporation

P.O. BOX 340500 | Milwaukee, WI 53234-0500 USA
414-671-6350

www.hatcocorp.com | support@hatcocorp.com