

Flav-R-Shield™

Self-Service Sneeze Guards

Model ES90



P/N 07.14.006.00-0922 [ES90_IG]
INSTALLATION GUIDE

Model ES90 Self-Service Sneeze Guards are available in ten widths ranging from 36"–144" (914–3658 mm), with a common height of 22-5/8" (575 mm) and a common depth of 16-1/4" (413 mm). For additional information regarding **Model ES90** sneeze guards, scan the QR Code below:



<https://www.hatcocorp.com/en/equipment/sneeze-guard-equipment/self-service/flav-r-shield-self-service-sneeze-guard-es90>

Important Safety Information

To avoid serious injury and damage to equipment or property, read the following safety information before installing this equipment.

Do not attempt to assemble and install sneeze guards alone. Installation of sneeze guards requires two or more people, dependent upon unit.

Always wear proper protective eye wear when handling glass sneeze guards.

Never spray cleaners directly onto sneeze guard surfaces. Spray cleaner into non-abrasive cloth, and then wipe down surfaces.

Use non-abrasive cleaners and cloths only. Abrasive cleaners and cloths could scratch finish of unit, marring its appearance and making it susceptible to soil accumulation. Use of abrasive materials will void warranty.

Assembly and Installation

- Unpack all components. Verify that the appropriate number of the items below are present.
 - Face Panel, 3/8" Tempered Glass
 - End Panel, 3/8" Tempered Glass
 - Top Shelf, 3/8" Tempered Glass
 - Post Assembly, 1" Stainless Steel
 - Rear Horizontal Support, 1" Stainless Steel
 - Center Post Assembly, 1" Stainless Steel (multiple bay only)
 - Orbit Bracket
 - Hardware Packet (includes hex wrenches for set screws)
- Remove the Mounting Flanges from each Post Assembly.
 - Slide the Flange Cover up and off of the flange.
 - Using the included hex wrench, loosen the set screw on the flange.
 - Slide the flange off of the Post Assembly.

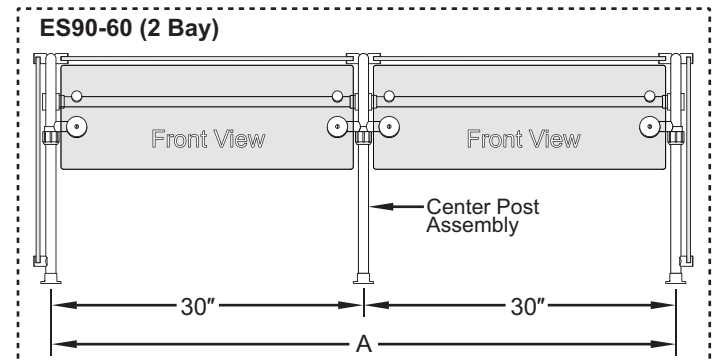
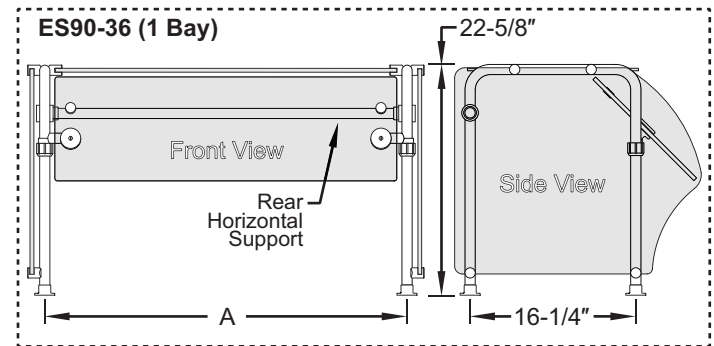
IMPORTANT NOTE

Sneeze guards that consist of multiple bays require careful measurement before installation of the Mounting Flanges.

- Install the Mounting Flanges to the mounting surface.
 - Refer to the "Model ES90 Standard Sizes" chart and illustration below to determine the location of the flanges. For multiple bay installations, refer to "Width per Bay" column in the chart.
 - Position the flanges in the appropriate locations, and mark the screw hole locations. **IMPORTANT!** Measure carefully, and make sure the flanges remain square to each other as well as the installation location.
 - Pre-drill the screw holes in the mounting surface.
 - Install the flanges using the appropriate, #8 countersunk-style fasteners for the mounting surface.

Model ES90 Standard Sizes

Item Number	Total Width (A) (post center to center)	Number of Bays	Width per Bay (post center to center)
ES90-036	36" (914 mm)	1	36" (914 mm)
ES90-048	48" (1219 mm)	1	48" (1219 mm)
ES90-060	60" (1524 mm)	2	30" (762 mm)
ES90-072	72" (1829 mm)	2	36" (914 mm)
ES90-084	84" (2134 mm)	2	42" (1067 mm)
ES90-096	96" (2438 mm)	2	48" (1219 mm)
ES90-108	108" (2743 mm)	2	54" (1372 mm)
ES90-120	120" (3048 mm)	3	40" (1016 mm)
ES90-132	132" (3353 mm)	3	44" (1118 mm)
ES90-144	144" (3658 mm)	3	48" (1219 mm)



NOTE: 18" End Panels meet NSF requirements.

- Install the Rear Horizontal Support(s) between each Post Assembly.
- Ensure the the Orbit brackets are installed on the front of each Post Assembly before installing the Post Assemblies into the Mounting Flanges.
- Insert each Post Assembly into its corresponding Mounting Flange. Make sure the posts are fully seated in the flanges.
- Tighten the set screw on each Mounting Flange securely.
- Slide each Flange Cover down onto its corresponding flange.

continued...

9. **IMPORTANT!** Refer to the “Securing the Glass” procedures on this sheet before beginning installation of any glass panels.
10. Install the glass Top Shelf(s) by sliding it into the glass clips from the front or rear. Secure the glass.
11. Install the glass Face Panel(s). Refer to “Orbit Brackets” in the “Securing the Glass” section.
12. Install each glass End Panel by sliding them into the glass clips from the front or rear. Secure the glass.
13. For NSF compliance, apply NSF-approved silicone sealant to the screw heads of all set screws and nylon set screws.

NOTE: For NSF compliance, the bottom edge of all End Panels cannot be positioned higher than 1-1/2" (38 mm) above the installation surface.

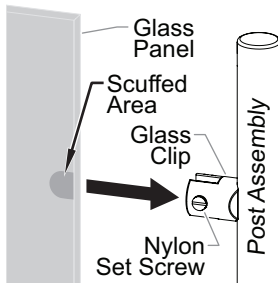
Securing the Glass

Glass panels are attached to support posts using either integrated glass clips or adjustable Orbit brackets. **CAUTION! Always wear proper protective eye wear when handling glass.**

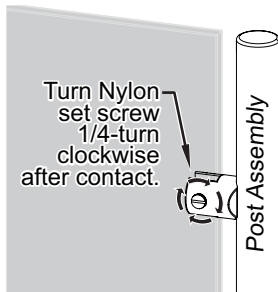
Glass Clips

The glass End Panels and Top Shelf panels are attached to the support posts using integrated glass clips. A nylon set screw on each glass clip secures the glass panel in the clip.

NOTE: During installation of all vertical and angled glass panels, Hatco strongly recommends that an abraded surface be created where the nylon set screw contacts the glass. This will create a strong bond between the set screw and the glass. Use 320-grit sandpaper to scuff the glass where each nylon set screw will contact the glass.



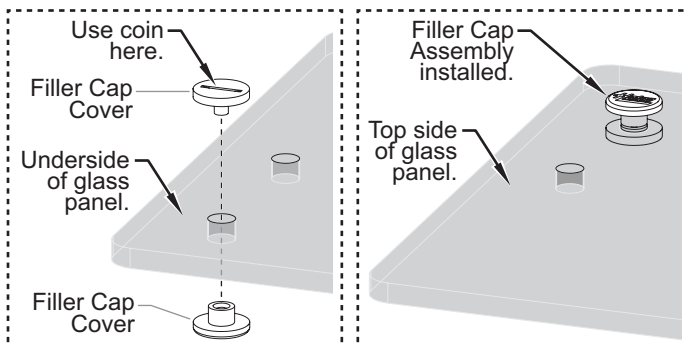
1. Abrade the surface of the glass panel where each nylon set screw will contact the glass.
2. Insert the glass panel into the glass clips.
3. Carefully turn the nylon set screw clockwise just until the screw contacts the glass. Then, turn the screw an additional 1/4-turn to secure the glass.



Orbit Brackets

The glass Face Panel(s) is attached to the support posts using adjustable Orbit brackets.

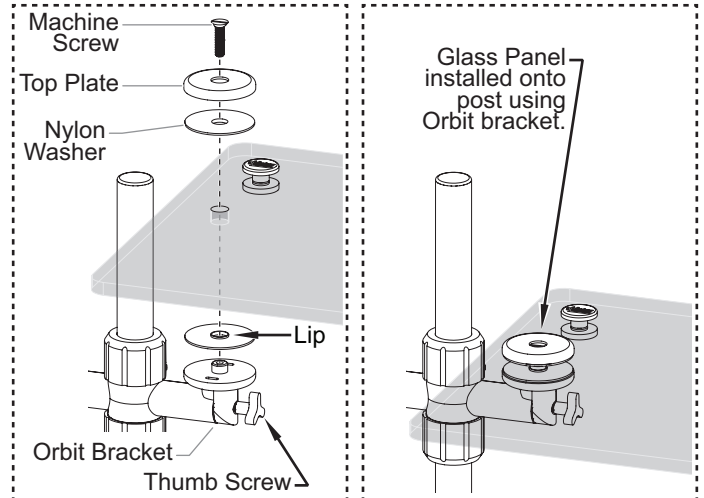
1. Prepare to install the glass panel.
 - There are two mounting holes provided on each side of the glass panel. Choose the hole position that will work for the installation. Install the provided filler cap assembly in the unused holes using a coin to hand-tighten.



2. Install the glass panel.
 - a. Loosen the thumb screw/hex cap screw on each Orbit bracket, and adjust the brackets so that the glass panel will be in the horizontal position during installation.
 - b. Install a nylon washer on top of each Orbit bracket.

NOTE: Always position nylon washers with the raised lip facing the glass.

- c. Position the glass panel on top of the nylon washers.
- d. Place a nylon washer followed by a top plate on top of the glass panel aligned with each Orbit bracket, and secure in position using an included machine screw. Tighten the screw until it holds the glass securely—do not over-tighten.



3. Adjust the angle of the glass panel, if necessary. **NOTICE: Two people are required for this step.**
 - The angle of the glass panel can be adjusted in 15° increments.
 - Simultaneously loosen the thumb screw/hex cap screw on each Orbit bracket, carefully rotate the glass panel to the desired position, and re-tighten the thumb screws/hex cap screws securely.

Cleaning/Maintenance

Clean the unit daily using non-abrasive cloths and cleaners.

- Always spray/apply cleaner to the cloth, then wipe down the sneeze guard. Do not spray cleaner directly onto the sneeze guard.

Custom Units

Scan this QR code or click the link below to access information regarding custom units including sizes, glass, hardware, and lighting.

www.hatcosneezeguards.com

