

Hatco / ADM Sneezeguards

Self-Service Sneeze Guards

Model ORBIT360

Model **ORBIT360** Self-Service Sneeze Guards are available in ten widths ranging from 36"–144" (914–3658 mm), with a common post height of 23" (584 mm) and a variable depth range of 2"–14" (51–356 mm).

For additional information regarding **ORBIT360** sneeze guards, scan the QR Code below:



<https://www.hatcocorp.com/en/equipment/sneeze-guard-equipment/self-service/flav-r-shield-self-service-sneeze-guard-es90>

Important Safety Information

To avoid serious injury and damage to equipment or property, read the following safety information before installing this equipment.

Do not attempt to assemble and install sneeze guards alone. Installation of sneeze guards requires two or more people, dependent upon unit.

Always wear proper protective eye wear when handling glass sneeze guards.

Never spray cleaners directly onto sneeze guard surfaces. Spray cleaner into non-abrasive cloth, and then wipe down surfaces.

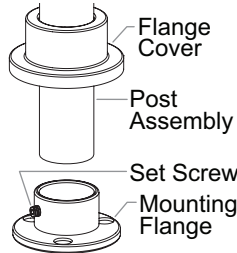
Use non-abrasive cleaners and cloths only. Abrasive cleaners and cloths could scratch finish of unit, marring its appearance and making it susceptible to soil accumulation. Use of abrasive materials will void warranty.

Assembly and Installation

- Unpack all components. Verify that the appropriate number of the items below are present.
 - Face Panel, 3/8" Tempered Glass
 - End Panel, 3/8" Tempered Glass (optional)
 - Post Assembly, 1" Stainless Steel
 - Center Post Assembly, 1" Stainless Steel (multiple bay only)
 - Orbit Bracket
 - Hardware Packet (includes hex wrenches for set screws)

- Remove the mounting flanges from each post assembly.

- Slide the flange cover up and off of the flange.
- Using the included hex wrench, loosen the set screw on the flange.
- Slide the flange off of the post assembly.



- Install the mounting flanges to the mounting surface.

- Refer to the "Model ORBIT360 Standard Sizes" chart and illustration below to determine the location of the flanges. For multiple bay installations, refer to "Width per Bay" column in the chart.

IMPORTANT NOTE

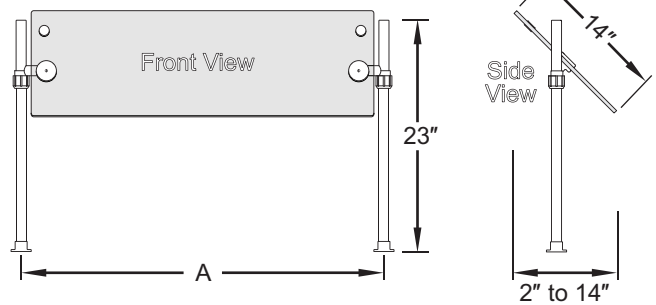
Sneeze guards that consist of multiple bays require careful measurement before installation of the mounting flanges.

- Position the flanges in the appropriate locations, and mark the screw hole locations. **IMPORTANT!** Measure carefully, and make sure the flanges remain square to each other as well as the installation location.
- Pre-drill the screw holes in the mounting surface.
- Install the flanges using the appropriate, #8 countersunk-style fasteners for the mounting surface.

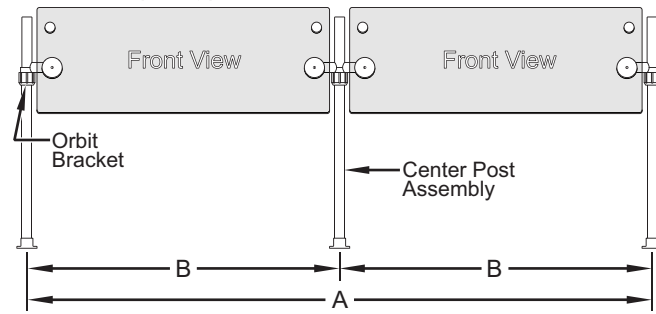
Model ORBIT360 Standard Sizes

Item Number	Total Width (A) (post center to center)	Number of Bays	Width per Bay (B) (post center to center)
ORBIT360-036	36" (914 mm)	1	36" (914 mm)
ORBIT360-048	48" (1219 mm)	2	24" (610 mm)
ORBIT360-060	60" (1524 mm)	2	30" (762 mm)
ORBIT360-072	72" (1829 mm)	2	36" (914 mm)
ORBIT360-084	84" (2134 mm)	2	42" (1067 mm)
ORBIT360-096	96" (2438 mm)	3	32" (813 mm)
ORBIT360-108	108" (2743 mm)	3	36" (914 mm)
ORBIT360-120	120" (3048 mm)	3	40" (1016 mm)
ORBIT360-132	132" (3353 mm)	4	33" (838 mm)
ORBIT360-144	144" (3658 mm)	4	36" (914 mm)

ORBIT360 (1 Bay)



ORBIT360 (2 Bay)

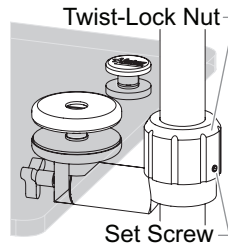


- Insert each post assembly into its corresponding mounting flange. Make sure the posts are fully seated in the flanges.
- Tighten the set screw on each mounting flange securely.
- Slide each flange cover down onto its corresponding flange.

continued...

7. Install the Orbit brackets onto each post assembly.

- Hand-tighten each Orbit bracket in place by turning the twist-lock nut clockwise. Do not tighten the safety set screw on the twist-lock until the brackets are in their final position.
- If optional end panels are present, install the Orbit brackets that came with the end panels underneath the face panel Orbit brackets on the post assemblies.



8. **IMPORTANT!** Refer to the “Securing the Glass” procedure on this sheet before beginning installation of any glass panels.

9. Install the glass face panel(s). Refer to the “Securing the Glass” section.

10. Install each glass end panel, if equipped. Refer to the “Securing the Glass” section.

11. For NSF compliance, apply NSF-approved silicone sealant to the screw heads of all set screws and nylon set screws.

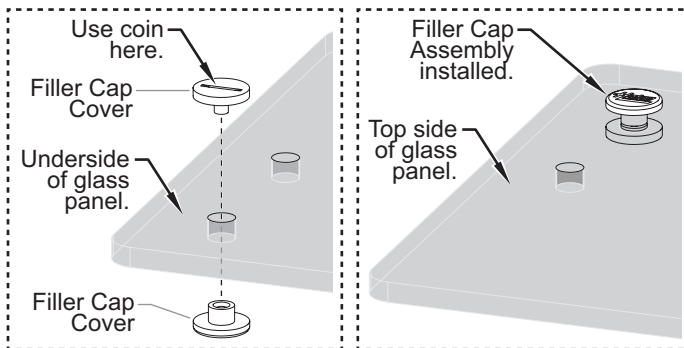
NOTE: For NSF compliance, the bottom edge of all end panels cannot be positioned higher than 1-1/2" (38 mm) above the installation surface.

Securing the Glass

Glass face panels and end panels are attached to the post assemblies using adjustable Orbit brackets. Use the following procedure to install the glass panels. **CAUTION! Always wear proper protective eye wear when handling glass.**

1. Prepare to install the glass face panel(s).

- There are two mounting holes provided on each side of a glass face panel. Choose the hole position that will work for the installation. Install the provided filler cap assembly in the unused holes using a coin to hand-tighten.

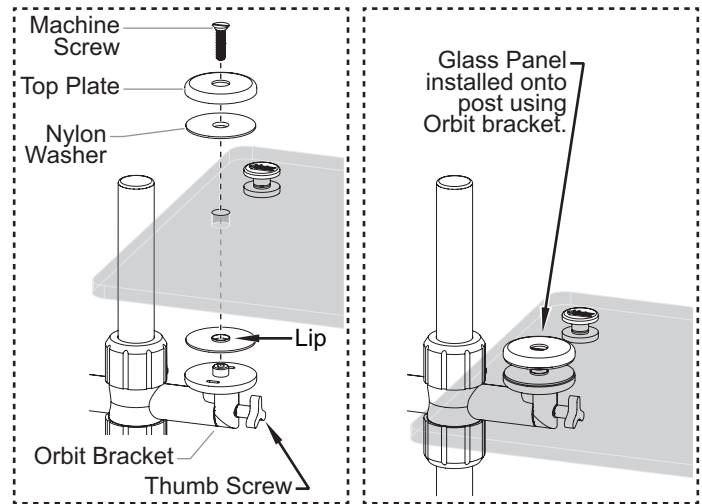


2. Install the glass panels. To install a glass panel:

- Loosen the thumb screw/hex cap screw on each Orbit bracket, and adjust the brackets so that the glass panel will be in the horizontal position during installation.
- Install a nylon washer on top of each Orbit bracket.

NOTE: Always position nylon washers with the raised lip facing the glass.

- Position the glass panel on top of the nylon washers.
- Place a nylon washer followed by a top plate on top of the glass panel aligned with each Orbit bracket, and secure in position using an included machine screw. Tighten the screw until it holds the glass securely—do not over-tighten.



3. Adjust the height of the glass face panel, if necessary. **NOTICE: Two people are required for this step.**

- Simultaneously loosen the twist-lock nut counterclockwise on each face panel Orbit bracket, move the panel to the desired height, and re-tighten the twist-lock nuts by turning clockwise.
- Tighten the safety set screw on each twist-lock nut to secure the Orbit brackets in position.

4. Adjust the angle of the glass face panel, if necessary. **NOTICE: Two people are required for this step.**

- The angle of the glass panel can be adjusted in 15° increments.
- Simultaneously loosen the thumb screw/hex cap screw on each Orbit bracket, carefully rotate the glass panel to the desired position, and re-tighten the thumb screws/hex cap screws securely.

Cleaning/Maintenance

Clean the unit daily using non-abrasive cloths and cleaners.

- Always spray/apply cleaner to the cloth, then wipe down the sneeze guard. Do not spray cleaner directly onto the sneeze guard.
- The glass panel can be cleaned using a standard glass cleaner.

Options and Accessories

End Panels

End panels with a depth of 18" (457 mm) are available for all ORBIT360 portable sneeze guards.

LED Light Bar

An LED light bar is available as a factory-installed option for certain sizes and can be configured with a cord and plug or a battery pack.

Custom Units

Scan this QR code or click the link below to access information regarding custom units including sizes, glass, hardware, and lighting.

www.hatcosneezeguards.com



HATCO CORPORATION

P.O. Box 340500

Milwaukee, WI 53234-0500 U.S.A.

414-671-6350

support@hatcocorp.com

www.hatcocorp.com