



IMPORTANT NOTE:

Locate the Specification Label on unit to determine exact Model Name and electrical specifications. This information is needed to identify the correct replacement parts. See exploded view illustration(s) for Specification Label location.

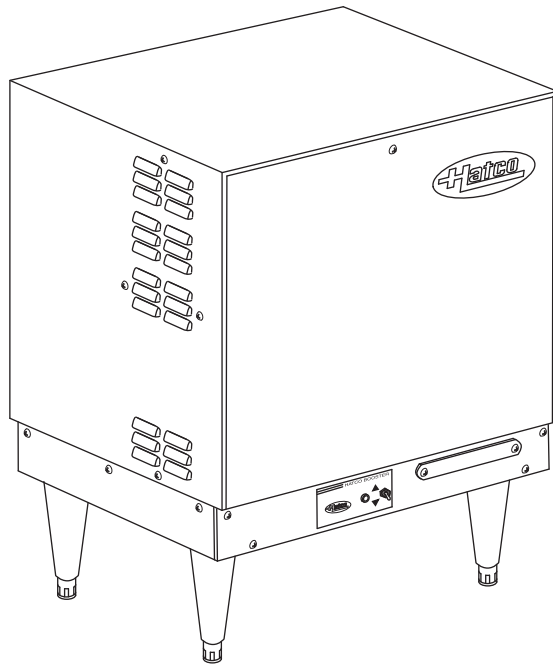


Use of replacement parts other than those supplied by Hatco Corporation may result in damage to unit or injury to personnel and will void all warranties.

Imperial Electric Booster Water Heater

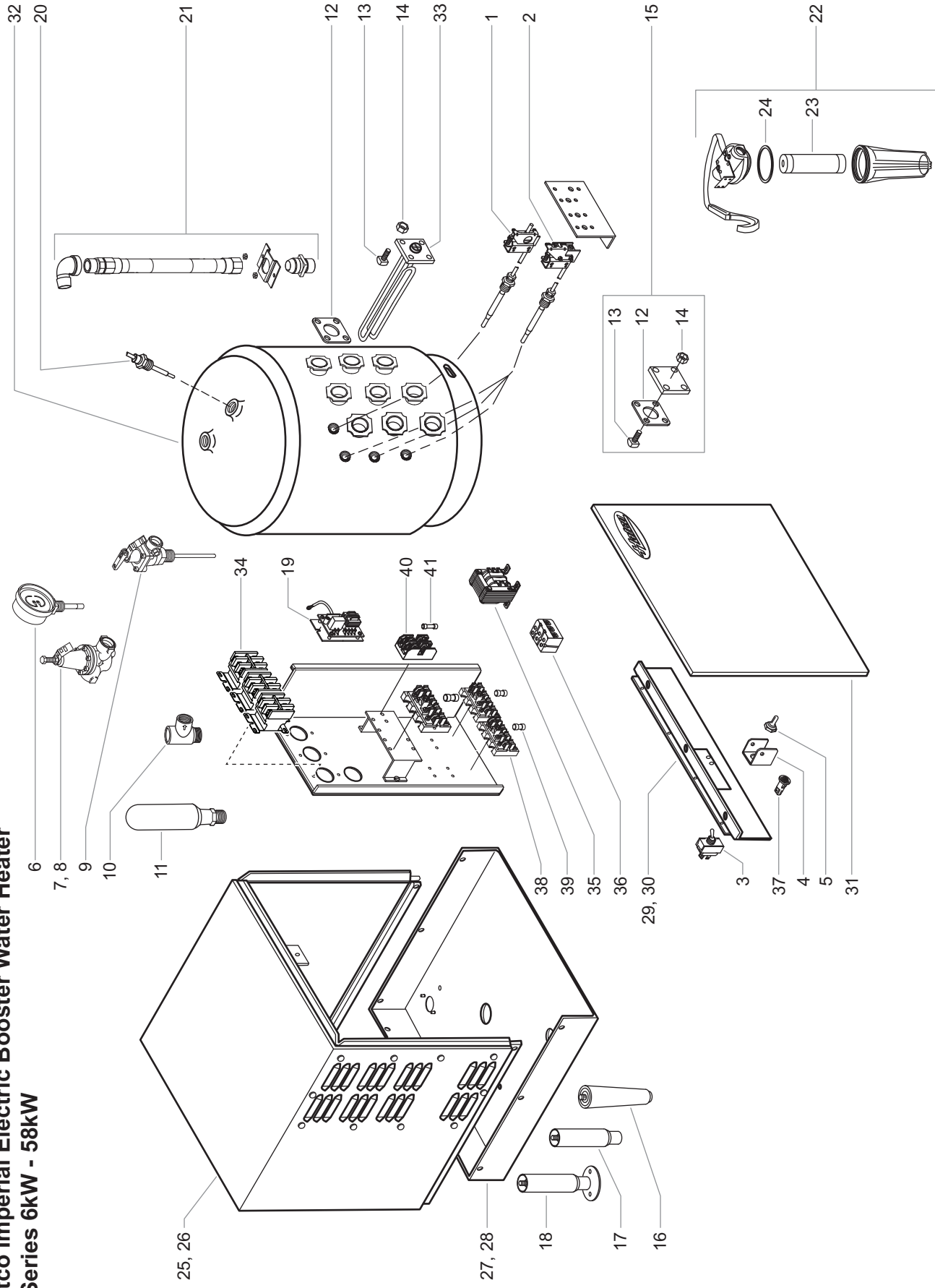
S Series

<u>Model Name</u>	<u>Page</u>	<u>Model Name</u>	<u>Page</u>	<u>Model Name</u>	<u>Page</u>
S-6	4	S-17	16	S-39	28
S-7	6	S-18	18	S-40	30
S-9	8	S-24	20	S-45	32
S-12	10	S-27	22	S-54	34
S-13	12	S-30	24	S-57	36
S-15	14	S-36	26	S-58	38



Replacement Parts List

**Hatco Imperial Electric Booster Water Heater
S Series 6kW - 58kW**



**Parts Common to All
Imperial Booster Models
6kW-58kW**

Item	Description	Part No.	Qty.
1	High Limit, Safety Thermostat	02.16.116.00	1
2	Thermostat, Control	02.16.024.00	1-3
3	On/Off Toggle Switch	R02.19.008A.00	1
4	Guard, Toggle Switch	04.01.038.00	1
5	Toggle Switch Boot, Rubber	02.20.040.00	1
6	Temperature/Pressure Gauge	03.01.003.00	2
7	Pressure Reducing Valve, Iron	03.02.004.00	1
8	Pressure Reducing Valve, Brass (Optional)	03.02.015.00	1
9	Temperature/Pressure Relief Valve	03.02.022.00	1
10	Back Pressure Relief Valve (Optional)	03.02.039.00	1
11	Shock Absorber (Optional)	03.40.057.00	1
12	Gasket, Heating Element	02.11.012.00	1-9
13	Bolt, Element Mounting	05.04.022.00	4-36
14	Nut, Element Mounting	05.04.028.00	4-36
15	Blank Element Flange with Gasket and Hardware	R02.11.013.00	1-2
16	Leg, Plastic	05.30.069.00*	4
17	Leg, S.S.	05.30.070.00*	4
18	Leg, Deck Mount S.S. (Optional)	05.30.073.00*	4
19	Low Water Cut Off Board	R02.01.210.00	1
20	Probe, Low Water Cut Off	02.40.001.00	1
21	Heat Trap Assembly	R03.12.048.00	1
22	Water Treatment Canister and Cartridge (Optional)	03.05.061.00	1
23	Cartridge Only	03.05.061A.00	1
24	O-Ring	03.05.061B.00	1

* Units manufactured during or before July 1999 use part number 04.01.013.00 for the S.S. leg or 04.01.014.00 for the S.S. deck mount leg.

**Imperial Booster
Sheet Metal Body Parts**

Item	Description	Part No.
25	Jacket, Painted	R04.03.024.00
26	Jacket, S.S. (Optional)	R04.03.031.00
27	Base, Painted	R04.03.002P.00
28	Base, S.S. (Optional)	R04.03.004.00
29	Base, Front, Painted	R04.03.030.00
30	Base, Front, S.S. (Optional)	R04.03.032.00
31	Front Cover, S.S.	R04.03.025.00

NOTE: S.S. is an abbreviation for stainless steel.

NOTE: Part numbers listed for sheet metal body parts apply only to units manufactured during or after October 1996. Consult factory with model and serial number for units manufactured before October 1996.

NOTE: The last four digits in a ten digit numerical serial number is the manufacturing date code.

Example: Serial number 1021059907 has a date code of 9907 which indicates the following: 99 07

	Year 1999
	Month seven, July

Please also note, effective January 2001 the serial number date code was changed to reflect the year and week of manufacture.

Example: xxxxxx 0124

	Year 2001
	Week twenty-four

Parts Specific to Model S-6

Item	Description	208V		240V		480V		208V		240V		480V		208V	
		Single Phase	Three Phase	Single Phase	Three Phase	Single Phase	Three Phase	Single Phase	Three Phase	Single Phase	Three Phase	Single Phase	Three Phase	Single Phase	Three Phase
32	Tank with Gaskets	R01.02.007S.00	R01.02.007S.00	R01.02.007S.00	R01.02.007S.00	---	R01.02.007S.00	---	R01.02.007S.00	---	R01.02.007S.00	---	R01.02.007S.00	---	R01.02.007S.00
33	Heating Element	R02.04.302.00	R02.04.302.00	R02.04.303.00	R02.04.303.00	---	R02.04.303.00	---	R02.04.303.00	---	R02.04.303.00	---	R02.04.302.00	---	R02.04.302.00
	Quantity	2	2	2	2	---	2	---	2	---	2	---	2	---	2
34	Contactors	02.01.015.00	02.01.015.00	02.01.015.00	02.01.015.00	---	02.01.015.00	---	02.01.015.00	---	02.01.015.00	---	02.01.016.00	---	02.01.016.00
	Quantity	1	1	1	1	---	1	---	1	---	1	---	1	---	1
35	Transformer, Step Down	02.17.049.00	02.17.049.00	02.17.049.00	02.17.049.00	---	02.17.049.00	---	02.17.049.00	---	02.17.049.00	---	---	---	---
36	Terminal Block	R02.15.046.00	R02.15.046.00	R02.15.046.00	R02.15.046.00	---	R02.15.046.00	---	R02.15.046.00	---	R02.15.046.00	---	R02.15.021.00	---	R02.15.021.00
37	Indicator Light, Red	02.19.154.00	02.19.154.00	02.19.154.00	02.19.154.00	---	02.19.154.00	---	02.19.154.00	---	02.19.154.00	---	02.19.151.00	---	02.19.151.00
38A	Power Fuse Block	---	---	---	---	---	---	---	---	---	---	---	---	---	---
	Quantity	---	---	---	---	---	---	---	---	---	---	---	---	---	---
38B	Power Fuse Block	---	---	---	---	---	---	---	---	---	---	---	---	---	---
	Quantity	---	---	---	---	---	---	---	---	---	---	---	---	---	---
38C	Power Fuse Block	---	---	---	---	---	---	---	---	---	---	---	---	---	---
	Quantity	---	---	---	---	---	---	---	---	---	---	---	---	---	---
38D	Power Fuse Block	---	---	---	---	---	---	---	---	---	---	---	---	---	---
	Quantity	---	---	---	---	---	---	---	---	---	---	---	---	---	---
38E	Power Fuse Block	---	---	---	---	---	---	---	---	---	---	---	---	---	---
	Quantity	---	---	---	---	---	---	---	---	---	---	---	---	---	---
39A	Power Fuse (2 Pack)	---	---	---	---	---	---	---	---	---	---	---	---	---	---
	Quantity	---	---	---	---	---	---	---	---	---	---	---	---	---	---
39B	Power Fuse (2 Pack)	---	---	---	---	---	---	---	---	---	---	---	---	---	---
	Quantity	---	---	---	---	---	---	---	---	---	---	---	---	---	---
39C	Power Fuse (2 Pack)	---	---	---	---	---	---	---	---	---	---	---	---	---	---
	Quantity	---	---	---	---	---	---	---	---	---	---	---	---	---	---
39D	Power Fuse (2 Pack)	---	---	---	---	---	---	---	---	---	---	---	---	---	---
	Quantity	---	---	---	---	---	---	---	---	---	---	---	---	---	---
40	Control Fuse Block	02.03.022.00	02.03.022.00	02.03.022.00	02.03.022.00	---	02.03.022.00	---	02.03.022.00	---	02.03.022.00	---	02.03.004.00	---	02.03.004.00
41	Control Fuse (2 Pack)	R02.03.014.02	R02.03.014.02	R02.03.014.02	R02.03.014.02	---	R02.03.014.02	---	R02.03.014.02	---	R02.03.014.02	---	R02.03.001.02	---	R02.03.001.02
	Electrical Diagram	HC1-2455	HC1-2455	HC1-2455	HC1-2455	---	HC1-2455	---	HC1-2455	---	HC1-2455	---	HC1-391	---	HC1-391

Shaded area reflects international models only.



Parts Specific to Model S-6

Item	Description	240V Single Phase	240V Three Phase	380V Three Phase	415V Three Phase	600V Three Phase
32	Tank with Gaskets	R01.02.007S.00	R01.02.007S.00	R01.02.007S.00	R01.02.007S.00	R01.02.007S.00
33	Heating Element Quantity	R02.04.303.00 2	R02.04.303.00 2	R02.04.510.00 3	R02.04.452.00 3	R02.04.404.00 3
34	Contactors Quantity	02.01.016.00 1	02.01.016.00 1	02.01.016.00 1	02.01.016.00 1	02.01.016.00 1
35	Transformer, Step Down	---	---	R02.17.003.00	R02.17.002.00	02.17.009.00
36	Terminal Block	R02.15.021.00	R02.15.021.00	---	---	---
37	Indicator Light, Red	02.19.151.00	02.19.151.00	02.19.151.00	02.19.151.00	02.19.151.00
38A	Power Fuse Block Quantity	---	---	---	---	---
38B	Power Fuse Block Quantity	---	---	---	---	---
38C	Power Fuse Block Quantity	---	---	---	---	---
38D	Power Fuse Block Quantity	---	---	---	---	---
38E	Power Fuse Block Quantity	---	---	---	---	---
39A	Power Fuse (2 Pack) Quantity	---	---	---	---	---
39B	Power Fuse (2 Pack) Quantity	---	---	---	---	---
39C	Power Fuse (2 Pack) Quantity	---	---	---	---	---
39D	Power Fuse (2 Pack) Quantity	---	---	---	---	---
40	Control Fuse Block	02.03.004.00	02.03.004.00	---	---	02.03.016.00
41	Control Fuse (2 Pack) Electrical Diagram	R02.03.001.02 HC1-391	R02.03.001.02 HC1-391	R02.03.005.02 HC1-396	R02.03.014.02 HC1-396	R02.03.021.02 HC1-396

Shaded area reflects **international models only**.

Parts Specific to Model S-7

Item	Description	208V		208V		240V		480V		208V		208V	
		Single Phase	Three Phase	Single Phase	Three Phase	Single Phase	Three Phase	Single Phase	Three Phase	Single Phase	Three Phase	Single Phase	Three Phase
32	Tank with Gaskets	R01.02.007S.00	R01.02.007S.00	R01.02.007S.00	R01.02.007S.00	---	---	---	R01.02.007S.00	R01.02.007S.00	R01.02.007S.00	R01.02.007S.00	R01.02.007S.00
33	Heating Element Quantity	R02.04.350.00 2	R02.04.350.00 2	R02.04.351.00 2	R02.04.351.00 2	---	---	---	R02.04.352.00 2	R02.04.350.00 2	R02.04.350.00 2	R02.04.350.00 2	R02.04.350.00 2
34	Contactors Quantity	02.01.015.00 1	02.01.015.00 1	02.01.015.00 1	02.01.015.00 1	---	---	---	02.01.015.00 1	02.01.016.00 1	02.01.016.00 1	02.01.016.00 1	02.01.016.00 1
35	Transformer, Step Down	02.17.049.00	02.17.049.00	02.17.049.00	02.17.049.00	---	---	---	02.17.049.00	02.17.049.00	02.17.049.00	02.17.049.00	02.17.049.00
36	Terminal Block	R02.15.046.00	R02.15.046.00	R02.15.046.00	R02.15.046.00	---	---	---	R02.15.046.00	R02.15.046.00	R02.15.046.00	R02.15.046.00	R02.15.046.00
37	Indicator Light, Red	02.19.154.00	02.19.154.00	02.19.154.00	02.19.154.00	---	---	---	02.19.154.00	02.19.154.00	02.19.154.00	02.19.154.00	02.19.154.00
38A	Power Fuse Block Quantity	---	---	---	---	---	---	---	---	---	---	---	---
38B	Power Fuse Block Quantity	---	---	---	---	---	---	---	---	---	---	---	---
38C	Power Fuse Block Quantity	---	---	---	---	---	---	---	---	---	---	---	---
38D	Power Fuse Block Quantity	---	---	---	---	---	---	---	---	---	---	---	---
38E	Power Fuse Block Quantity	---	---	---	---	---	---	---	---	---	---	---	---
39A	Power Fuse (2 Pack) Quantity	---	---	---	---	---	---	---	---	---	---	---	---
39B	Power Fuse (2 Pack) Quantity	---	---	---	---	---	---	---	---	---	---	---	---
39C	Power Fuse (2 Pack) Quantity	---	---	---	---	---	---	---	---	---	---	---	---
39D	Power Fuse (2 Pack) Quantity	---	---	---	---	---	---	---	---	---	---	---	---
40	Control Fuse Block	02.03.022.00	02.03.022.00	02.03.022.00	02.03.022.00	---	---	---	02.03.022.00	02.03.022.00	02.03.022.00	02.03.022.00	02.03.022.00
41	Control Fuse (2 Pack) Electrical Diagram	R02.03.014.02 HC1-2455	R02.03.014.02 HC1-2455	R02.03.014.02 HC1-2455	R02.03.014.02 HC1-2455	---	---	---	R02.03.013.02 HC1-2455	R02.03.014.02 HC1-2455	R02.03.014.02 HC1-2455	R02.03.014.02 HC1-2455	R02.03.001.02 HC1-391

Shaded area reflects international models only.

Parts Specific to Model S-7

Item	Description	240V Single Phase	240V Three Phase	380V Three Phase	415V Three Phase	600V Three Phase
32	Tank with Gaskets	R01.02.007S.00	R01.02.007S.00	R01.02.007S.00	R01.02.007S.00	R01.02.007S.00
33	Heating Element Quantity	R02.04.351.00 2	R02.04.351.00 2	R02.04.303.00 3	R02.04.510.00 3	R02.04.502.00 3
34	Contactors Quantity	02.01.016.00 1	02.01.016.00 1	02.01.016.00 1	02.01.016.00 1	02.01.016.00 1
35	Transformer, Step Down	---	---	R02.17.003.00	R02.17.002.00	02.17.009.00
36	Terminal Block	R02.15.021.00	R02.15.021.00	---	---	---
37	Indicator Light, Red	02.19.151.00	02.19.151.00	02.19.151.00	02.19.151.00	02.19.151.00
38A	Power Fuse Block Quantity	---	---	---	---	---
38B	Power Fuse Block Quantity	---	---	---	---	---
38C	Power Fuse Block Quantity	---	---	---	---	---
38D	Power Fuse Block Quantity	---	---	---	---	---
38E	Power Fuse Block Quantity	---	---	---	---	---
39A	Power Fuse (2 Pack) Quantity	---	---	---	---	---
39B	Power Fuse (2 Pack) Quantity	---	---	---	---	---
39C	Power Fuse (2 Pack) Quantity	---	---	---	---	---
39D	Power Fuse (2 Pack) Quantity	---	---	---	---	---
40	Control Fuse Block	02.03.004.00	02.03.004.00	---	---	02.03.016.00
41	Control Fuse (2 Pack) Electrical Diagram	R02.03.001.02 HC1-391	R02.03.001.02 HC1-391	R02.03.005.02 HC1-396	R02.03.014.02 HC1-396	R02.03.021.02 HC1-396

Shaded area reflects international models only.

Parts Specific to Model S-9

Item	Description	208V		240V		480V		208V		240V		480V		208V	
		Single Phase	Three Phase	Single Phase	Three Phase	Single Phase	Three Phase	Single Phase	Three Phase	Single Phase	Three Phase	Single Phase	Three Phase	Single Phase	Three Phase
32	Tank with Gaskets	R01.02.007S.00	R01.02.007S.00	R01.02.007S.00	R01.02.007S.00	---	R01.02.007S.00	---	R01.02.007S.00	---	R01.02.007S.00	---	R01.02.007S.00	---	R01.02.007S.00
33	Heating Element	R02.04.450.00	R02.04.450.00	R02.04.451.00	R02.04.451.00	---	R02.04.451.00	---	R02.04.450.00	---	R02.04.453.00	---	R02.04.450.00	---	R02.04.450.00
	Quantity	2	2	2	2	---	2	---	2	---	2	---	2	---	2
34	Contactors	02.01.015.00	02.01.015.00	02.01.015.00	02.01.015.00	---	02.01.015.00	---	02.01.015.00	---	02.01.015.00	---	02.01.016.00	---	02.01.016.00
	Quantity	1	1	1	1	---	1	---	1	---	1	---	1	---	1
35	Transformer, Step Down	02.17.004.00	02.17.004.00	02.17.004.00	02.17.004.00	---	02.17.004.00	---	02.17.004.00	---	02.17.005.00	---	02.17.005.00	---	02.17.005.00
36	Terminal Block	R02.15.046.00	R02.15.046.00	R02.15.046.00	R02.15.046.00	---	R02.15.046.00	---	R02.15.046.00	---	---	---	R02.15.021.00	---	R02.15.021.00
37	Indicator Light, Red	02.19.154.00	02.19.154.00	02.19.154.00	02.19.154.00	---	02.19.154.00	---	02.19.154.00	---	02.19.154.00	---	02.19.151.00	---	02.19.151.00
38A	Power Fuse Block	---	---	---	---	---	---	---	---	---	---	---	---	---	---
	Quantity	---	---	---	---	---	---	---	---	---	---	---	---	---	---
38B	Power Fuse Block	---	---	---	---	---	---	---	---	---	---	---	---	---	---
	Quantity	---	---	---	---	---	---	---	---	---	---	---	---	---	---
38C	Power Fuse Block	---	---	---	---	---	---	---	---	---	---	---	---	---	---
	Quantity	---	---	---	---	---	---	---	---	---	---	---	---	---	---
38D	Power Fuse Block	---	---	---	---	---	---	---	---	---	---	---	---	---	---
	Quantity	---	---	---	---	---	---	---	---	---	---	---	---	---	---
38E	Power Fuse Block	---	---	---	---	---	---	---	---	---	---	---	---	---	---
	Quantity	---	---	---	---	---	---	---	---	---	---	---	---	---	---
39A	Power Fuse (2 Pack)	---	---	---	---	---	---	---	---	---	---	---	---	---	---
	Quantity	---	---	---	---	---	---	---	---	---	---	---	---	---	---
39B	Power Fuse (2 Pack)	---	---	---	---	---	---	---	---	---	---	---	---	---	---
	Quantity	---	---	---	---	---	---	---	---	---	---	---	---	---	---
39C	Power Fuse (2 Pack)	---	---	---	---	---	---	---	---	---	---	---	---	---	---
	Quantity	---	---	---	---	---	---	---	---	---	---	---	---	---	---
39D	Power Fuse (2 Pack)	---	---	---	---	---	---	---	---	---	---	---	---	---	---
	Quantity	---	---	---	---	---	---	---	---	---	---	---	---	---	---
40	Control Fuse Block	02.03.022.00	02.03.022.00	02.03.022.00	02.03.022.00	---	02.03.022.00	---	02.03.022.00	---	02.03.022.00	---	02.03.004.00	---	02.03.004.00
41	Control Fuse (2 Pack)	R02.03.014.02	R02.03.014.02	R02.03.014.02	R02.03.014.02	---	R02.03.014.02	---	R02.03.014.02	---	R02.03.013.02	---	R02.03.001.02	---	R02.03.001.02
	Electrical Diagram	HC1-2455	HC1-2455	HC1-2455	HC1-2455	---	HC1-2455	---	HC1-2455	---	HC1-2455	---	HC1-391	---	HC1-391

Shaded area reflects international models only.



Parts Specific to Model S-9

Item	Description	240V Single Phase	240V Three Phase	380V Three Phase	415V Three Phase	600V Three Phase
32	Tank with Gaskets	R01.02.007S.00	R01.02.007S.00	R01.02.007S.00	R01.02.007S.00	R01.02.007S.00
33	Heating Element Quantity	R02.04.451.00 2	R02.04.451.00 2	R02.04.351.00 3	R02.04.303.00 3	R02.04.304.00 3
34	Contactors Quantity	02.01.016.00 1	02.01.016.00 1	02.01.016.00 1	02.01.016.00 1	02.01.016.00 1
35	Transformer, Step Down	---	---	R02.17.003.00	R02.17.002.00	02.17.009.00
36	Terminal Block	R02.15.021.00	R02.15.021.00	---	---	---
37	Indicator Light, Red	02.19.151.00	02.19.151.00	02.19.151.00	02.19.151.00	02.19.151.00
38A	Power Fuse Block Quantity	---	---	---	---	---
38B	Power Fuse Block Quantity	---	---	---	---	---
38C	Power Fuse Block Quantity	---	---	---	---	---
38D	Power Fuse Block Quantity	---	---	---	---	---
38E	Power Fuse Block Quantity	---	---	---	---	---
39A	Power Fuse (2 Pack) Quantity	---	---	---	---	---
39B	Power Fuse (2 Pack) Quantity	---	---	---	---	---
39C	Power Fuse (2 Pack) Quantity	---	---	---	---	---
39D	Power Fuse (2 Pack) Quantity	---	---	---	---	---
40	Control Fuse Block	02.03.004.00	02.03.004.00	---	---	02.03.016.00
41	Control Fuse (2 Pack) Electrical Diagram	R02.03.001.02 HC1-391	R02.03.001.02 HC1-391	R02.03.005.02 HC1-396	R02.03.014.02 HC1-396	R02.03.021.02 HC1-396

Shaded area reflects international models only.



Parts Specific to Model S-12

Item	Description	208V		208V		240V		480V		480V		208V		208V	
		Single Phase	Three Phase	Single Phase	Three Phase	Single Phase	Three Phase	Single Phase	Three Phase	Single Phase	Three Phase	Single Phase	Three Phase	Single Phase	Three Phase
32	Tank with Gaskets	R01.02.007S.00	R01.02.007S.00	R01.02.007S.00	R01.02.007S.00	R01.02.007S.00	R01.02.007S.00	---	---	---	---	R01.02.007S.00	R01.02.007S.00	R01.02.007S.00	R01.02.007S.00
33	Heating Element	R02.04.400.00	R02.04.400.00	R02.04.401.00	R02.04.401.00	R02.04.401.00	R02.04.401.00	---	---	---	---	R02.04.404.00	R02.04.400.00	R02.04.400.00	R02.04.400.00
	Quantity	3	3	3	3	3	3	---	---	---	---	3	3	3	3
34	Contactors	02.01.017.00	02.01.015.00	02.01.017.00	02.01.015.00	02.01.017.00	02.01.015.00	---	---	---	---	02.01.015.00	02.01.018.00	02.01.018.00	02.01.018.00
	Quantity	1	1	1	1	1	1	---	---	---	---	1	1	1	1
35	Transformer, Step Down	02.17.004.00	02.17.004.00	02.17.004.00	02.17.004.00	02.17.004.00	02.17.004.00	---	---	---	---	02.17.005.00	---	---	---
36	Terminal Block	---	R02.15.046.00	---	R02.15.046.00	---	R02.15.046.00	---	---	---	---	---	R02.15.046.00	R02.15.046.00	R02.15.046.00
37	Indicator Light, Red	02.19.154.00	02.19.154.00	02.19.154.00	02.19.154.00	02.19.154.00	02.19.154.00	---	---	---	---	02.19.154.00	02.19.151.00	02.19.151.00	02.19.151.00
38A	Power Fuse Block	02.41.005.00	---	02.41.005.00	---	02.41.005.00	---	---	---	---	---	---	---	---	---
	Quantity	1	---	1	---	1	---	---	---	---	---	---	---	---	---
38B	Power Fuse Block	---	---	---	---	---	---	---	---	---	---	---	---	---	---
	Quantity	---	---	---	---	---	---	---	---	---	---	---	---	---	---
38C	Power Fuse Block	---	---	---	---	---	---	---	---	---	---	---	---	---	---
	Quantity	---	---	---	---	---	---	---	---	---	---	---	---	---	---
38D	Power Fuse Block	---	---	---	---	---	---	---	---	---	---	---	---	---	---
	Quantity	---	---	---	---	---	---	---	---	---	---	---	---	---	---
38E	Power Fuse Block	---	---	---	---	---	---	---	---	---	---	---	---	---	---
	Quantity	---	---	---	---	---	---	---	---	---	---	---	---	---	---
39A	Power Fuse (2 Pack) (35 Amp)	R02.03.030.02	---	R02.03.030.02	---	R02.03.030.02	---	---	---	---	---	---	---	---	---
	Quantity	1	---	1	---	1	---	---	---	---	---	---	---	---	---
39B	Power Fuse (2 Pack) (50 Amp)	R02.03.032.02	---	R02.03.032.02	---	R02.03.032.02	---	---	---	---	---	---	---	---	---
	Quantity	1	---	1	---	1	---	---	---	---	---	---	---	---	---
39C	Power Fuse (2 Pack)	---	---	---	---	---	---	---	---	---	---	---	---	---	---
	Quantity	---	---	---	---	---	---	---	---	---	---	---	---	---	---
39D	Power Fuse (2 Pack)	---	---	---	---	---	---	---	---	---	---	---	---	---	---
	Quantity	---	---	---	---	---	---	---	---	---	---	---	---	---	---
40	Control Fuse Block	02.03.022.00	02.03.022.00	02.03.022.00	02.03.022.00	02.03.022.00	02.03.022.00	---	---	---	---	02.03.023.00	02.03.004.00	02.03.004.00	02.03.004.00
41	Control Fuse (2 Pack)	R02.03.014.02	R02.03.014.02	R02.03.014.02	R02.03.014.02	R02.03.014.02	R02.03.014.02	---	---	---	---	R02.03.013.02	R02.03.001.02	R02.03.001.02	R02.03.001.02
	Electrical Diagram	HS1-2073	HS1-2465	HS1-2073	HS1-2465	HS1-2073	HS1-2465	---	---	---	---	HC1-2465	HC1-390	HC1-390	HC1-390

Shaded area reflects international models only.

Parts Specific to Model S-12

Item	Description	240V Single Phase	240V Three Phase	380V Three Phase	415V Three Phase	600V Three Phase
32	Tank with Gaskets	R01.02.007S.00	R01.02.007S.00	R01.02.007S.00	R01.02.007S.00	R01.02.007S.00
33	Heating Element Quantity	R02.04.401.00 3	R02.04.401.00 3	R02.04.501.00 3	R02.04.401.00 3	R02.04.402.00 3
34	Contactors Quantity	02.01.018.00 1	02.01.018.00 1	02.01.016.00 1	02.01.016.00 1	02.01.016.00 1
35	Transformer, Step Down	---	---	R02.17.003.00	R02.17.002.00	02.17.009.00
36	Terminal Block	R02.15.021.00	R02.15.021.00	---	---	---
37	Indicator Light, Red	02.19.151.00	02.19.151.00	02.19.151.00	02.19.151.00	02.19.151.00
38A	Power Fuse Block Quantity	---	---	---	---	---
38B	Power Fuse Block Quantity	---	---	---	---	---
38C	Power Fuse Block Quantity	---	---	---	---	---
38D	Power Fuse Block Quantity	---	---	---	---	---
38E	Power Fuse Block Quantity	---	---	---	---	---
39A	Power Fuse (2 Pack) Quantity	---	---	---	---	---
39B	Power Fuse (2 Pack) Quantity	---	---	---	---	---
39C	Power Fuse (2 Pack) Quantity	---	---	---	---	---
39D	Power Fuse (2 Pack) Quantity	---	---	---	---	---
40	Control Fuse Block	02.03.004.00	02.03.004.00	---	---	02.03.016.00
41	Control Fuse (2 Pack) Electrical Diagram	R02.03.001.02 HC1-390	R02.03.001.02 HC1-390	R02.03.005.02 HC1-396	R02.03.014.02 HC1-396	R02.03.021.02 HC1-396

Shaded area reflects international models only.

Parts Specific to Model S-13

Item	Description	208V		208V		240V		480V		208V		208V	
		Single Phase	Three Phase	Single Phase	Three Phase	Single Phase	Three Phase	Single Phase	Three Phase	Single Phase	Three Phase	Single Phase	Three Phase
32	Tank with Gaskets	R01.02.007S.00	R01.02.007S.00	R01.02.007S.00	R01.02.007S.00	R01.02.007S.00	R01.02.007S.00	---	---	R01.02.007S.00	R01.02.007S.00	R01.02.007S.00	R01.02.007S.00
33	Heating Element	R02.04.450.00	R02.04.450.00	R02.04.451.00	R02.04.451.00	R02.04.451.00	R02.04.451.00	---	---	R02.04.453.00	R02.04.450.00	R02.04.450.00	R02.04.450.00
	Quantity	3	3	3	3	3	3	---	---	3	3	3	3
34	Contactors	02.01.017.00	02.01.015.00	02.01.017.00	02.01.015.00	02.01.015.00	02.01.015.00	---	---	02.01.015.00	02.01.018.00	02.01.018.00	02.01.018.00
	Quantity	1	1	1	1	1	1	---	---	1	1	1	1
35	Transformer, Step Down	02.17.004.00	02.17.004.00	02.17.004.00	02.17.004.00	02.17.004.00	02.17.004.00	---	---	02.17.005.00	---	---	---
36	Terminal Block	---	R02.15.046.00	---	R02.15.046.00	R02.15.046.00	R02.15.046.00	---	---	---	R02.15.046.00	R02.15.046.00	R02.15.046.00
37	Indicator Light, Red	02.19.154.00	02.19.154.00	02.19.154.00	02.19.154.00	02.19.154.00	02.19.154.00	---	---	02.19.154.00	02.19.151.00	02.19.151.00	02.19.151.00
38A	Power Fuse Block	02.41.005.00	---	02.41.005.00	---	---	---	---	---	---	---	---	---
	Quantity	1	---	1	---	---	---	---	---	---	---	---	---
38B	Power Fuse Block	---	---	---	---	---	---	---	---	---	---	---	---
	Quantity	---	---	---	---	---	---	---	---	---	---	---	---
38C	Power Fuse Block	---	---	---	---	---	---	---	---	---	---	---	---
	Quantity	---	---	---	---	---	---	---	---	---	---	---	---
38D	Power Fuse Block	---	---	---	---	---	---	---	---	---	---	---	---
	Quantity	---	---	---	---	---	---	---	---	---	---	---	---
38E	Power Fuse Block	---	---	---	---	---	---	---	---	---	---	---	---
	Quantity	---	---	---	---	---	---	---	---	---	---	---	---
39A	Power Fuse (2 Pack) (35 Amp)	R02.03.030.02	---	R02.03.030.02	---	---	---	---	---	---	---	---	---
	Quantity	1	---	1	---	---	---	---	---	---	---	---	---
39B	Power Fuse (2 Pack) (50 Amp)	R02.03.032.02	---	R02.03.032.02	---	---	---	---	---	---	---	---	---
	Quantity	1	---	1	---	---	---	---	---	---	---	---	---
39C	Power Fuse (2 Pack)	---	---	---	---	---	---	---	---	---	---	---	---
	Quantity	---	---	---	---	---	---	---	---	---	---	---	---
39D	Power Fuse (2 Pack)	---	---	---	---	---	---	---	---	---	---	---	---
	Quantity	---	---	---	---	---	---	---	---	---	---	---	---
40	Control Fuse Block	02.03.022.00	02.03.022.00	02.03.022.00	02.03.022.00	02.03.022.00	02.03.022.00	---	---	02.03.023.00	02.03.004.00	02.03.004.00	02.03.004.00
41	Control Fuse (2 Pack)	R02.03.014.02	R02.03.014.02	R02.03.014.02	R02.03.014.02	R02.03.014.02	R02.03.014.02	---	---	R02.03.013.02	R02.03.001.02	R02.03.001.02	R02.03.001.02
	Electrical Diagram	HS1-2073	HS1-2465	HS1-2073	HS1-2465	HS1-2465	HS1-2465	---	---	HC1-2465	HC1-390	HC1-390	HC1-390

Shaded area reflects international models only.



Parts Specific to Model S-13

Item	Description	240V Single Phase	240V Three Phase	380V Three Phase	415V Three Phase	600V Three Phase
32	Tank with Gaskets	R01.02.007S.00	R01.02.007S.00	---	R01.02.007S.00	R01.02.007S.00
33	Heating Element Quantity	R02.04.451.00 3	R02.04.451.00 3	---	R02.04.451.00 3	R02.04.353.00 3
34	Contactors Quantity	02.01.018.00 1	02.01.018.00 1	---	02.01.016.00 1	02.01.016.00 1
35	Transformer, Step Down	---	---	---	R02.17.002.00	02.17.009.00
36	Terminal Block	R02.15.046.00	R02.15.046.00	---	---	---
37	Indicator Light, Red	02.19.151.00	02.19.151.00	---	02.19.151.00	02.19.151.00
38A	Power Fuse Block Quantity	---	---	---	---	---
38B	Power Fuse Block Quantity	---	---	---	---	---
38C	Power Fuse Block Quantity	---	---	---	---	---
38D	Power Fuse Block Quantity	---	---	---	---	---
38E	Power Fuse Block Quantity	---	---	---	---	---
39A	Power Fuse (2 Pack) Quantity	---	---	---	---	---
39B	Power Fuse (2 Pack) Quantity	---	---	---	---	---
39C	Power Fuse (2 Pack) Quantity	---	---	---	---	---
39D	Power Fuse (2 Pack) Quantity	---	---	---	---	---
40	Control Fuse Block	02.03.004.00	02.03.004.00	---	---	02.03.016.00
41	Control Fuse (2 Pack) Electrical Diagram	R02.03.001.02 HC1-390	R02.03.001.02 HC1-390	---	R02.03.001.02 HC1-396	R02.03.021.02 HC1-396

Shaded area reflects international models only.

Parts Specific to Model S-15

Item	Description	208V		208V		240V		480V		480V		208V		208V	
		Single Phase	Three Phase	Single Phase	Three Phase	Single Phase	Three Phase	Single Phase	Three Phase	Single Phase	Three Phase	Single Phase	Three Phase	Single Phase	Three Phase
32	Tank with Gaskets	R01.02.007S.00	R01.02.007S.00	R01.02.007S.00	R01.02.007S.00	R01.02.007S.00	R01.02.007S.00	---	---	---	R01.02.007S.00	R01.02.007S.00	R01.02.007S.00	R01.02.007S.00	R01.02.007S.00
33	Heating Element	R02.04.500.00	R02.04.500.00	R02.04.501.00	R02.04.501.00	R02.04.501.00	R02.04.501.00	---	---	---	R02.04.502.00	R02.04.500.00	R02.04.500.00	R02.04.500.00	R02.04.500.00
	Quantity	3	3	3	3	3	3	---	---	---	3	3	3	3	3
34	Contactors	02.01.017.00	02.01.015.00	02.01.017.00	02.01.015.00	02.01.017.00	02.01.015.00	---	---	---	02.01.015.00	02.01.018.00	02.01.018.00	02.01.018.00	02.01.018.00
	Quantity	1	1	1	1	1	1	---	---	---	1	1	1	1	1
35	Transformer, Step Down	02.17.004.00	02.17.004.00	02.17.004.00	02.17.004.00	02.17.004.00	02.17.004.00	---	---	---	02.17.005.00	02.17.005.00	02.17.005.00	02.17.005.00	02.17.005.00
36	Terminal Block	---	R02.15.046.00	---	R02.15.046.00	---	R02.15.046.00	---	---	---	---	R02.15.046.00	R02.15.046.00	R02.15.046.00	R02.15.046.00
37	Indicator Light, Red	02.19.154.00	02.19.154.00	02.19.154.00	02.19.154.00	02.19.154.00	02.19.154.00	---	---	---	02.19.154.00	02.19.151.00	02.19.151.00	02.19.151.00	02.19.151.00
38A	Power Fuse Block	02.41.005.00	---	02.41.005.00	---	02.41.005.00	---	---	---	---	---	---	---	---	---
	Quantity	1	---	1	---	1	---	---	---	---	---	---	---	---	---
38B	Power Fuse Block	---	---	---	---	---	---	---	---	---	---	---	---	---	---
	Quantity	---	---	---	---	---	---	---	---	---	---	---	---	---	---
38C	Power Fuse Block	---	---	---	---	---	---	---	---	---	---	---	---	---	---
	Quantity	---	---	---	---	---	---	---	---	---	---	---	---	---	---
38D	Power Fuse Block	---	---	---	---	---	---	---	---	---	---	---	---	---	---
	Quantity	---	---	---	---	---	---	---	---	---	---	---	---	---	---
38E	Power Fuse Block	---	---	---	---	---	---	---	---	---	---	---	---	---	---
	Quantity	---	---	---	---	---	---	---	---	---	---	---	---	---	---
39A	Power Fuse (2 Pack) (35 Amp)	R02.03.030.02	---	R02.03.030.02	---	R02.03.030.02	---	---	---	---	---	---	---	---	---
	Quantity	1	---	1	---	1	---	---	---	---	---	---	---	---	---
39B	Power Fuse (2 Pack) (60 Amp)	R02.03.033.02	---	R02.03.033.02	---	R02.03.033.02	---	---	---	---	---	---	---	---	---
	Quantity	1	---	1	---	1	---	---	---	---	---	---	---	---	---
39C	Power Fuse (2 Pack)	---	---	---	---	---	---	---	---	---	---	---	---	---	---
	Quantity	---	---	---	---	---	---	---	---	---	---	---	---	---	---
39D	Power Fuse (2 Pack)	---	---	---	---	---	---	---	---	---	---	---	---	---	---
	Quantity	---	---	---	---	---	---	---	---	---	---	---	---	---	---
40	Control Fuse Block	02.03.022.00	02.03.022.00	02.03.022.00	02.03.022.00	02.03.022.00	02.03.022.00	---	---	---	02.03.023.00	02.03.004.00	02.03.004.00	02.03.004.00	02.03.004.00
41	Control Fuse (2 Pack)	R02.03.014.02	R02.03.014.02	R02.03.014.02	R02.03.014.02	R02.03.014.02	R02.03.014.02	---	---	---	R02.03.013.02	R02.03.001.02	R02.03.001.02	R02.03.001.02	R02.03.001.02
	Electrical Diagram	HS1-2073	HS1-2465	HS1-2073	HS1-2465	HS1-2073	HS1-2465	---	---	---	HC1-2465	HC1-390	HC1-390	HC1-390	HC1-390

Shaded area reflects international models only.

Parts Specific to Model S-15

Item	Description	240V Single Phase	240V Three Phase	380V Three Phase	415V Three Phase	600V Three Phase
32	Tank with Gaskets	R01.02.007S.00	R01.02.007S.00	R01.02.007S.00	R01.02.007S.00	R01.02.007S.00
33	Heating Element Quantity	R02.04.501.00 3	R02.04.501.00 3	R02.04.603.00 3	R02.04.501.00 3	R02.04.510.00 3
34	Contactors Quantity	02.01.018.00 1	02.01.018.00 1	02.01.016.00 1	02.01.016.00 1	02.01.016.00 1
35	Transformer, Step Down	---	---	R02.17.003.00	R02.17.002.00	02.17.009.00
36	Terminal Block	R02.15.046.00	R02.15.046.00	---	---	---
37	Indicator Light, Red	02.19.151.00	02.19.151.00	02.19.151.00	02.19.151.00	02.19.151.00
38A	Power Fuse Block Quantity	---	---	---	---	---
38B	Power Fuse Block Quantity	---	---	---	---	---
38C	Power Fuse Block Quantity	---	---	---	---	---
38D	Power Fuse Block Quantity	---	---	---	---	---
38E	Power Fuse Block Quantity	---	---	---	---	---
39A	Power Fuse (2 Pack) Quantity	---	---	---	---	---
39B	Power Fuse (2 Pack) Quantity	---	---	---	---	---
39C	Power Fuse (2 Pack) Quantity	---	---	---	---	---
39D	Power Fuse (2 Pack) Quantity	---	---	---	---	---
40	Control Fuse Block	02.03.004.00	02.03.004.00	---	---	02.03.016.00
41	Control Fuse (2 Pack) Electrical Diagram	R02.03.001.02 HC1-390	R02.03.001.02 HC1-390	R02.03.005.02 HC1-396	R02.03.014.02 HC1-396	R02.03.021.02 HC1-396

Shaded area reflects international models only.

Parts Specific to Model S-17

Item	Description	208V		240V		480V		208V	
		Single Phase	Three Phase	Single Phase	Three Phase	Single Phase	Three Phase	Single Phase	Three Phase
32	Tank with Gaskets	---	R01.02.007S.00	---	---	---	---	---	R01.02.007S.00
33	Heating Element	---	R02.04.600.00	---	---	---	---	---	R02.04.600.00
	Quantity	---	3	---	---	---	---	---	3
34	Contactors	---	02.01.015.00	---	---	---	---	---	02.01.018.00
	Quantity	---	1	---	---	---	---	---	1
35	Transformer, Step Down	---	02.17.004.00	---	---	---	---	---	---
36	Terminal Block	---	R02.15.046.00	---	---	---	---	---	R02.15.046.00
37	Indicator Light, Red	---	02.19.154.00	---	---	---	---	---	02.19.151.00
38A	Power Fuse Block	---	---	---	---	---	---	---	---
	Quantity	---	---	---	---	---	---	---	---
38B	Power Fuse Block	---	---	---	---	---	---	---	---
	Quantity	---	---	---	---	---	---	---	---
38C	Power Fuse Block	---	---	---	---	---	---	---	---
	Quantity	---	---	---	---	---	---	---	---
38D	Power Fuse Block	---	---	---	---	---	---	---	---
	Quantity	---	---	---	---	---	---	---	---
38E	Power Fuse Block	---	---	---	---	---	---	---	---
	Quantity	---	---	---	---	---	---	---	---
39A	Power Fuse (2 Pack)	---	---	---	---	---	---	---	---
	Quantity	---	---	---	---	---	---	---	---
39B	Power Fuse (2 Pack)	---	---	---	---	---	---	---	---
	Quantity	---	---	---	---	---	---	---	---
39C	Power Fuse (2 Pack)	---	---	---	---	---	---	---	---
	Quantity	---	---	---	---	---	---	---	---
39D	Power Fuse (2 Pack)	---	---	---	---	---	---	---	---
	Quantity	---	---	---	---	---	---	---	---
40	Control Fuse Block	---	02.03.022.00	---	---	---	---	---	02.03.004.00
41	Control Fuse (2 Pack)	---	R02.03.014.02	---	---	---	---	---	R02.03.001.02
	Electrical Diagram	---	HC1-2465	---	---	---	---	---	HC1-390

Shaded area reflects international models only.



Parts Specific to Model S-17

Item	Description	240V Single Phase	240V Three Phase	380V Three Phase	415V Three Phase	600V Three Phase
32	Tank with Gaskets	---	---	---	---	---
33	Heating Element Quantity	---	---	---	---	---
34	Contactors Quantity	---	---	---	---	---
35	Transformer, Step Down	---	---	---	---	---
36	Terminal Block	---	---	---	---	---
37	Indicator Light, Red	---	---	---	---	---
38A	Power Fuse Block Quantity	---	---	---	---	---
38B	Power Fuse Block Quantity	---	---	---	---	---
38C	Power Fuse Block Quantity	---	---	---	---	---
38D	Power Fuse Block Quantity	---	---	---	---	---
38E	Power Fuse Block Quantity	---	---	---	---	---
39A	Power Fuse (2 Pack) Quantity	---	---	---	---	---
39B	Power Fuse (2 Pack) Quantity	---	---	---	---	---
39C	Power Fuse (2 Pack) Quantity	---	---	---	---	---
39D	Power Fuse (2 Pack) Quantity	---	---	---	---	---
40	Control Fuse Block	---	---	---	---	---
41	Control Fuse (2 Pack) Electrical Diagram	---	---	---	---	---

Shaded area reflects international models only.



Parts Specific to Model S-18

Item	Description	208V		240V		480V		208V		240V		480V		208V	
		Single Phase	Three Phase	Single Phase	Three Phase	Single Phase	Three Phase	Single Phase	Three Phase	Single Phase	Three Phase	Single Phase	Three Phase	Single Phase	Three Phase
32	Tank with Gaskets	R01.02.007S.00	---	R01.02.007S.00	R01.02.007S.00	---	R01.02.007S.00	---	---	R01.02.007S.00	R01.02.007S.00	---	---	R01.02.007S.00	---
33	Heating Element	R02.04.610.00	---	R02.04.611.00	R02.04.611.00	---	R02.04.613.00	---	---	R02.04.610.00	R02.04.610.00	---	---	R02.04.610.00	---
	Quantity	3	---	3	3	---	3	---	---	3	3	---	---	3	---
34	Contact	02.01.015.00	---	02.01.015.00	02.01.015.00	---	02.01.015.00	---	---	02.01.015.00	02.01.015.00	---	---	02.01.018.00	---
	Quantity	2	---	2	1	---	1	---	---	1	1	---	---	1	---
35	Transformer, Step Down	02.17.004.00	---	02.17.004.00	02.17.004.00	---	02.17.004.00	---	---	02.17.004.00	02.17.004.00	---	---	02.17.005.00	---
36	Terminal Block	---	---	---	R02.15.046.00	---	---	---	---	---	---	---	---	R02.15.046.00	---
37	Indicator Light, Red	02.19.154.00	---	02.19.154.00	02.19.154.00	---	02.19.154.00	---	---	02.19.154.00	02.19.154.00	---	---	02.19.151.00	---
38A	Power Fuse Block	02.41.010.00	---	02.41.010.00	---	---	---	---	---	---	---	---	---	---	---
	Quantity	2	---	2	---	---	---	---	---	---	---	---	---	---	---
38B	Power Fuse Block	---	---	---	---	---	---	---	---	---	---	---	---	---	---
	Quantity	---	---	---	---	---	---	---	---	---	---	---	---	---	---
38C	Power Fuse Block	---	---	---	---	---	---	---	---	---	---	---	---	---	---
	Quantity	---	---	---	---	---	---	---	---	---	---	---	---	---	---
38D	Power Fuse Block	---	---	---	---	---	---	---	---	---	---	---	---	---	---
	Quantity	---	---	---	---	---	---	---	---	---	---	---	---	---	---
38E	Power Fuse Block	---	---	---	---	---	---	---	---	---	---	---	---	---	---
	Quantity	---	---	---	---	---	---	---	---	---	---	---	---	---	---
39A	Power Fuse (2 Pack) (40 Amp)	R02.03.031.02	---	R02.03.031.02	---	---	---	---	---	---	---	---	---	---	---
	Quantity	3	---	3	---	---	---	---	---	---	---	---	---	---	---
39B	Power Fuse (2 Pack)	---	---	---	---	---	---	---	---	---	---	---	---	---	---
	Quantity	---	---	---	---	---	---	---	---	---	---	---	---	---	---
39C	Power Fuse (2 Pack)	---	---	---	---	---	---	---	---	---	---	---	---	---	---
	Quantity	---	---	---	---	---	---	---	---	---	---	---	---	---	---
39D	Power Fuse (2 Pack)	---	---	---	---	---	---	---	---	---	---	---	---	---	---
	Quantity	---	---	---	---	---	---	---	---	---	---	---	---	---	---
40	Control Fuse Block	02.03.022.00	---	02.03.022.00	02.03.022.00	---	02.03.022.00	---	---	02.03.022.00	02.03.022.00	---	---	02.03.004.00	---
41	Control Fuse (2 Pack)	R02.03.014.02	---	R02.03.014.02	R02.03.014.02	---	R02.03.014.02	---	---	R02.03.014.02	R02.03.013.02	---	---	R02.03.001.02	---
	Electrical Diagram	HC1-2469	---	HC1-2469	HC1-2465	---	HC1-2465	---	---	HC1-2465	HC1-2465	---	---	HC1-390	---

Shaded area reflects international models only.



Parts Specific to Model S-18

Item	Description	240V Single Phase	240V Three Phase	380V Three Phase	415V Three Phase	600V Three Phase
32	Tank with Gaskets	R01.02.007S.00	R01.02.007S.00	R01.02.007S.00	R01.02.007S.00	R01.02.007S.00
33	Heating Element Quantity	R02.04.611.00 3	R02.04.611.00 3	R02.04.601.00 3	R02.04.603.00 3	R02.04.604.00 3
34	Contactors Quantity	02.01.018.00 1	02.01.018.00 1	02.01.016.00 1	02.01.016.00 1	02.01.016.00 1
35	Transformer, Step Down	---	---	R02.17.003.00	R02.17.002.00	02.17.009.00
36	Terminal Block	R02.15.046.00	R02.15.046.00	---	---	---
37	Indicator Light, Red	02.19.151.00	02.19.151.00	02.19.151.00	02.19.151.00	02.19.151.00
38A	Power Fuse Block Quantity	---	---	---	---	---
38B	Power Fuse Block Quantity	---	---	---	---	---
38C	Power Fuse Block Quantity	---	---	---	---	---
38D	Power Fuse Block Quantity	---	---	---	---	---
38E	Power Fuse Block Quantity	---	---	---	---	---
39A	Power Fuse (2 Pack) Quantity	---	---	---	---	---
39B	Power Fuse (2 Pack) Quantity	---	---	---	---	---
39C	Power Fuse (2 Pack) Quantity	---	---	---	---	---
39D	Power Fuse (2 Pack) Quantity	---	---	---	---	---
40	Control Fuse Block	02.03.004.00	02.03.004.00	---	---	02.03.016.00
41	Control Fuse (2 Pack) Electrical Diagram	R02.03.001.02 HC1-390	R02.03.001.02 HC1-390	R02.03.005.02 HC1-396	R02.03.014.02 HC1-396	R02.03.021.02 HC1-396

Shaded area reflects international models only.

Parts Specific to Model S-24

Item	Description	208V		208V		240V		240V		480V		480V		208V		208V	
		Single Phase	Three Phase	Single Phase	Three Phase	Single Phase	Three Phase	Single Phase	Three Phase	Single Phase	Three Phase	Single Phase	Three Phase	Single Phase	Three Phase	Single Phase	Three Phase
32	Tank with Gaskets	R01.02.008S.00	R01.02.008S.00	R01.02.008S.00	R01.02.008S.00	R01.02.008S.00	R01.02.008S.00	---	---	---	R01.02.008S.00	R01.02.008S.00	R01.02.008S.00	R01.02.008S.00	---	---	---
33	Heating Element	R02.04.400.00	R02.04.400.00	R02.04.401.00	R02.04.401.00	R02.04.401.00	R02.04.401.00	---	---	---	R02.04.404.00	R02.04.400.00	R02.04.400.00	R02.04.400.00	---	---	---
	Quantity	6	6	6	6	6	6	---	---	---	6	6	6	6	---	---	---
34	Contactors	02.01.017.00	02.01.015.00	02.01.017.00	02.01.015.00	02.01.017.00	02.01.015.00	---	---	---	02.01.015.00	02.01.018.00	02.01.018.00	02.01.016.00	---	---	---
	Quantity	2	2	2	2	2	2	---	---	---	2	2	2	2	---	---	---
35	Transformer, Step Down	02.17.004.00	02.17.004.00	02.17.004.00	02.17.004.00	02.17.004.00	02.17.004.00	---	---	---	02.17.005.00	02.17.005.00	02.17.005.00	02.15.046.00	---	---	---
36	Terminal Block	---	---	---	---	---	---	---	---	---	---	---	---	---	---	---	---
37	Indicator Light, Red	02.19.154.00	02.19.154.00	02.19.154.00	02.19.154.00	02.19.154.00	02.19.154.00	---	---	---	02.19.154.00	02.19.154.00	02.19.154.00	02.19.151.00	---	---	---
38A	Power Fuse Block	02.41.015.00	---	02.41.015.00	---	02.41.015.00	---	---	---	---	---	---	---	---	---	---	---
	Quantity	2	---	2	---	2	---	---	---	---	---	---	---	---	---	---	---
38B	Power Fuse Block	---	02.41.001.00	---	02.41.001.00	---	02.41.001.00	---	---	---	---	---	---	---	---	---	---
	Quantity	---	1	---	1	---	1	---	---	---	---	---	---	---	---	---	---
38C	Power Fuse Block	---	02.41.005.00	---	02.41.005.00	---	02.41.005.00	---	---	---	---	---	---	---	---	---	---
	Quantity	---	1	---	1	---	1	---	---	---	---	---	---	---	---	---	---
38D	Power Fuse Block	---	---	---	---	---	---	---	---	---	---	---	---	---	---	---	---
	Quantity	---	---	---	---	---	---	---	---	---	---	---	---	---	---	---	---
38E	Power Fuse Block	---	---	---	---	---	---	---	---	---	---	---	---	---	---	---	---
	Quantity	---	---	---	---	---	---	---	---	---	---	---	---	---	---	---	---
39A	Power Fuse (2 Pack) (40 Amp)	R02.03.030.02	---	R02.03.030.02	---	R02.03.030.02	---	---	---	---	---	---	---	---	---	---	---
	Quantity	2	---	2	---	2	---	---	---	---	---	---	---	---	---	---	---
39B	Power Fuse (2 Pack)	R02.03.032.02	R02.03.032.02	R02.03.032.02	R02.03.032.02	R02.03.032.02	R02.03.032.02	---	---	---	---	---	---	---	---	---	---
	Quantity	2	3	2	2	2	3	---	---	---	---	---	---	---	---	---	---
39C	Power Fuse (2 Pack)	---	---	---	---	---	---	---	---	---	---	---	---	---	---	---	---
	Quantity	---	---	---	---	---	---	---	---	---	---	---	---	---	---	---	---
39D	Power Fuse (2 Pack)	---	---	---	---	---	---	---	---	---	---	---	---	---	---	---	---
	Quantity	---	---	---	---	---	---	---	---	---	---	---	---	---	---	---	---
40	Control Fuse Block	02.03.022.00	02.03.022.00	02.03.022.00	02.03.022.00	02.03.022.00	02.03.022.00	---	---	---	02.03.023.00	02.03.023.00	02.03.023.00	02.03.004.00	---	---	---
41	Control Fuse (2 Pack)	R02.03.014.02	R02.03.014.02	R02.03.014.02	R02.03.014.02	R02.03.014.02	R02.03.014.02	---	---	---	R02.03.013.02	R02.03.013.02	R02.03.013.02	R02.03.001.02	---	---	---
	Electrical Diagram	HC1-2499	HC1-2501	HC1-2499	HC1-2499	HC1-2499	HC1-2501	---	---	---	HC1-2503	HC1-2503	HC1-2503	HC1-1175	---	---	HC1-1174

Shaded area reflects international models only.

Parts Specific to Model S-24

Item	Description	240V Single Phase	240V Three Phase	380V Three Phase	415V Three Phase	600V Three Phase
32	Tank with Gaskets	R01.02.008S.00	R01.02.008S.00	R01.02.008S.00	R01.02.008S.00	R01.02.008S.00
33	Heating Element	R02.04.401.00	R02.04.401.00	R02.04.501.00	R02.04.401.00	R02.04.402.00
34	Contactors	6 02.01.018.00	6 02.01.016.00	6 02.01.016.00	6 02.01.016.00	6 02.01.016.00
35	Transformer, Step Down	2 ---	2 ---	2 R02.17.003.00	2 R02.17.002.00	2 02.17.009.00
36	Terminal Block	02.15.007.00	02.15.046.00	02.15.046.00	02.15.046.00	02.15.046.00
37	Indicator Light, Red	02.19.151.00	02.19.151.00	02.19.151.00	02.19.151.00	02.19.151.00
38A	Power Fuse Block	---	---	---	---	---
38B	Power Fuse Block	---	---	---	---	---
38C	Power Fuse Block	---	---	---	---	---
38D	Power Fuse Block	---	---	---	---	---
38E	Power Fuse Block	---	---	---	---	---
39A	Power Fuse (2 Pack)	---	---	---	---	---
39B	Power Fuse (2 Pack)	---	---	---	---	---
39C	Power Fuse (2 Pack)	---	---	---	---	---
39D	Power Fuse (2 Pack)	---	---	---	---	---
40	Control Fuse Block	02.03.004.00	02.03.004.00	---	---	02.03.016.00
41	Control Fuse (2 Pack)	R02.03.001.02	R02.03.001.02	R02.03.014.02	R02.03.014.02	R02.03.021.02
	Electrical Diagram	HC1-1175	HC1-1174	HC1-1179	HC1-1179	HC1-1179

Shaded area reflects international models only.



Parts Specific to Model S-27

Item	Description	208V		208V		240V		240V		480V		480V		208V		208V	
		Single Phase	Three Phase	Single Phase	Three Phase	Single Phase	Three Phase	Single Phase	Three Phase	Single Phase	Three Phase	Single Phase	Three Phase	Single Phase	Three Phase	Single Phase	Three Phase
32	Tank with Gaskets	R01.02.008S.00	R01.02.008S.00	R01.02.008S.00	R01.02.008S.00	R01.02.008S.00	R01.02.008S.00	---	---	---	R01.02.008S.00	R01.02.008S.00	R01.02.008S.00	R01.02.008S.00	---	---	---
33	Heating Element	R02.04.450.00	R02.04.450.00	R02.04.451.00	R02.04.451.00	R02.04.451.00	R02.04.451.00	---	---	---	R02.04.453.00	R02.04.450.00	R02.04.450.00	R02.04.450.00	---	---	---
	Quantity	6	6	6	6	6	6	---	---	---	6	6	6	6	---	---	---
34	Contactors	02.01.017.00	02.01.015.00	02.01.017.00	02.01.015.00	02.01.017.00	02.01.015.00	---	---	---	02.01.015.00	02.01.018.00	02.01.018.00	02.01.016.00	---	---	---
	Quantity	2	2	2	2	2	2	---	---	---	2	2	2	2	---	---	---
35	Transformer, Step Down	02.17.004.00	02.17.004.00	02.17.004.00	02.17.004.00	02.17.004.00	02.17.004.00	---	---	---	02.17.005.00	02.17.005.00	02.17.005.00	02.15.046.00	---	---	---
36	Terminal Block	---	---	---	---	---	---	---	---	---	R02.15.046.00	R02.15.046.00	R02.15.046.00	02.19.154.00	---	---	---
37	Indicator Light, Red	02.19.154.00	02.19.154.00	02.19.154.00	02.19.154.00	02.19.154.00	02.19.154.00	---	---	---	02.19.154.00	02.19.154.00	02.19.154.00	02.19.151.00	---	---	---
38A	Power Fuse Block	02.41.015.00	02.41.015.00	02.41.015.00	02.41.015.00	02.41.015.00	02.41.015.00	---	---	---	---	---	---	---	---	---	---
	Quantity	2	2	2	2	2	2	---	---	---	---	---	---	---	---	---	---
38B	Power Fuse Block	---	02.41.001.00	---	02.41.001.00	---	02.41.001.00	---	---	---	---	---	---	---	---	---	---
	Quantity	---	1	---	1	---	1	---	---	---	---	---	---	---	---	---	---
38C	Power Fuse Block	---	02.41.005.00	---	02.41.005.00	---	02.41.005.00	---	---	---	---	---	---	---	---	---	---
	Quantity	---	1	---	1	---	1	---	---	---	---	---	---	---	---	---	---
38D	Power Fuse Block	---	---	---	---	---	---	---	---	---	---	---	---	---	---	---	---
	Quantity	---	---	---	---	---	---	---	---	---	---	---	---	---	---	---	---
38E	Power Fuse Block	---	---	---	---	---	---	---	---	---	---	---	---	---	---	---	---
	Quantity	---	---	---	---	---	---	---	---	---	---	---	---	---	---	---	---
39A	Power Fuse (2 Pack) (35 Amp)	R02.03.030.02	R02.03.030.02	R02.03.030.02	R02.03.030.02	R02.03.030.02	R02.03.030.02	---	---	---	---	---	---	---	---	---	---
	Quantity	2	2	2	2	2	2	---	---	---	---	---	---	---	---	---	---
39B	Power Fuse (2 Pack) (50 Amp)	---	R02.03.032.02	---	R02.03.032.02	---	R02.03.032.02	---	---	---	---	---	---	---	---	---	---
	Quantity	---	3	---	3	---	3	---	---	---	---	---	---	---	---	---	---
39C	Power Fuse (2 Pack) (60 Amp)	R02.03.033.02	R02.03.033.02	R02.03.033.02	R02.03.033.02	R02.03.033.02	R02.03.033.02	---	---	---	---	---	---	---	---	---	---
	Quantity	2	2	2	2	2	2	---	---	---	---	---	---	---	---	---	---
39D	Power Fuse (2 Pack)	---	---	---	---	---	---	---	---	---	---	---	---	---	---	---	---
	Quantity	---	---	---	---	---	---	---	---	---	---	---	---	---	---	---	---
40	Control Fuse Block	02.03.022.00	02.03.022.00	02.03.022.00	02.03.022.00	02.03.022.00	02.03.022.00	---	---	---	02.03.023.00	02.03.023.00	02.03.023.00	02.03.004.00	---	---	---
41	Control Fuse (2 Pack)	R02.03.014.02	R02.03.014.02	R02.03.014.02	R02.03.014.02	R02.03.014.02	R02.03.014.02	---	---	---	R02.03.013.02	R02.03.001.02	R02.03.001.02	R02.03.001.02	---	---	---
	Electrical Diagram	HC1-2499	HC1-2501	HC1-2499	HC1-2499	HC1-2501	HC1-2501	---	---	---	HC1-2503	HC1-1175	HC1-1174	HC1-1174	---	---	---

Shaded area reflects international models only.

Parts Specific to Model S-27

Item	Description	240V Single Phase	240V Three Phase	380V Three Phase	415V Three Phase	600V Three Phase
32	Tank with Gaskets	R01.02.008S.00	R01.02.008S.00	R01.02.008S.00	R01.02.008S.00	R01.02.008S.00
33	Heating Element	R02.04.451.00	R02.04.451.00	R02.04.607.00	R02.04.451.00	R02.04.452.00
34	Quantity	6	6	6	6	6
34	Contactors	02.01.018.00	02.01.016.00	02.01.016.00	02.01.016.00	02.01.016.00
35	Quantity	2	2	2	2	2
35	Transformer, Step Down	---	---	R02.17.003.00	R02.17.002.00	02.17.009.00
36	Terminal Block	02.15.007.00	02.15.046.00	R02.15.046.00	R02.15.046.00	R02.15.046.00
37	Indicator Light, Red	02.19.151.00	02.19.151.00	02.19.151.00	02.19.151.00	02.19.151.00
38A	Power Fuse Block	---	---	---	---	---
38B	Quantity	---	---	---	---	---
38B	Power Fuse Block	---	---	---	---	---
38C	Quantity	---	---	---	---	---
38C	Power Fuse Block	---	---	---	---	---
38D	Quantity	---	---	---	---	---
38D	Power Fuse Block	---	---	---	---	---
38E	Quantity	---	---	---	---	---
38E	Power Fuse Block	---	---	---	---	---
39A	Quantity	---	---	---	---	---
39A	Power Fuse (2 Pack)	---	---	---	---	---
39B	Quantity	---	---	---	---	---
39B	Power Fuse (2 Pack)	---	---	---	---	---
39C	Quantity	---	---	---	---	---
39C	Power Fuse (2 Pack)	---	---	---	---	---
39D	Quantity	---	---	---	---	---
39D	Power Fuse (2 Pack)	---	---	---	---	---
40	Quantity	02.03.004.00	02.03.004.00	---	---	02.03.016.00
40	Control Fuse Block	R02.03.001.02	R02.03.001.02	R02.03.014.02	R02.03.014.02	R02.03.021.02
41	Control Fuse (2 Pack)	HC1-1175	HC1-1174	HC1-1179	HC1-1179	HC1-1179
	Electrical Diagram					

Shaded area reflects international models only.



Parts Specific to Model S-30

Item	Description	208V		208V		240V		480V		480V		208V		208V	
		Single Phase	Three Phase	Single Phase	Three Phase	Single Phase	Three Phase	Single Phase	Three Phase	Single Phase	Three Phase	Single Phase	Three Phase	Single Phase	Three Phase
32	Tank with Gaskets	R01.02.008S.00	R01.02.008S.00	R01.02.008S.00	R01.02.008S.00	R01.02.008S.00	R01.02.008S.00	---	---	---	---	R01.02.008S.00	R01.02.008S.00	R01.02.008S.00	R01.02.008S.00
33	Heating Element Quantity	R02.04.500.00 6	R02.04.500.00 6	R02.04.501.00 6	R02.04.501.00 6	R02.04.501.00 6	R02.04.501.00 6	---	---	---	---	R02.04.502.00 6	R02.04.500.00 6	R02.04.500.00 6	R02.04.500.00 6
34	Contactors Quantity	02.01.017.00 2	02.01.015.00 2	02.01.017.00 2	02.01.015.00 2	02.01.015.00 2	02.01.015.00 2	---	---	---	---	02.01.015.00 2	02.01.018.00 2	02.01.018.00 2	02.01.016.00 2
35	Transformer, Step Down	02.17.004.00	02.17.004.00	02.17.004.00	02.17.004.00	02.17.004.00	02.17.004.00	---	---	---	---	02.17.005.00	---	---	---
36	Terminal Block	---	---	---	---	---	---	---	---	---	---	---	---	---	---
37	Indicator Light, Red	02.19.154.00	02.19.154.00	02.19.154.00	02.19.154.00	02.19.154.00	02.19.154.00	---	---	---	---	02.15.046.00	02.15.007.00	02.15.046.00	02.15.046.00
38A	Power Fuse Block Quantity	02.41.015.00 2	02.41.015.00 2	02.41.015.00 2	02.41.015.00 2	02.41.015.00 2	02.41.015.00 2	---	---	---	---	---	---	---	---
38B	Power Fuse Block Quantity	---	02.41.001.00 1	---	02.41.001.00 1	02.41.001.00 1	02.41.001.00 1	---	---	---	---	---	---	---	---
38C	Power Fuse Block Quantity	---	02.41.005.00 1	---	02.41.005.00 1	02.41.005.00 1	02.41.005.00 1	---	---	---	---	---	---	---	---
38D	Power Fuse Block Quantity	---	---	---	---	---	---	---	---	---	---	---	---	---	---
38E	Power Fuse Block Quantity	---	---	---	---	---	---	---	---	---	---	---	---	---	---
39A	Power Fuse (2 Pack) (35 Amp) Quantity	R02.03.030.02 2	R02.03.030.02 2	R02.03.030.02 2	R02.03.030.02 2	R02.03.030.02 2	R02.03.030.02 2	---	---	---	---	---	---	---	---
39B	Power Fuse (2 Pack) (60 Amp) Quantity	R02.03.033.02 2	R02.03.033.02 3	R02.03.033.02 2	R02.03.033.02 2	R02.03.033.02 3	R02.03.033.02 3	---	---	---	---	---	---	---	---
39C	Power Fuse (2 Pack) Quantity	---	---	---	---	---	---	---	---	---	---	---	---	---	---
39D	Power Fuse (2 Pack) Quantity	---	---	---	---	---	---	---	---	---	---	---	---	---	---
40	Control Fuse Block	02.03.022.00	02.03.022.00	02.03.022.00	02.03.022.00	02.03.022.00	02.03.022.00	---	---	---	---	02.03.023.00	02.03.004.00	02.03.004.00	02.03.004.00
41	Control Fuse (2 Pack) Electrical Diagram	R02.03.014.02 HC1-2499	R02.03.014.02 HC1-2501	R02.03.014.02 HC1-2499	R02.03.014.02 HC1-2499	R02.03.014.02 HC1-2501	R02.03.014.02 HC1-2501	---	---	---	---	R02.03.013.02 HC1-2503	R02.03.001.02 HC1-1175	R02.03.001.02 HC1-1174	R02.03.001.02 HC1-1174

Shaded area reflects international models only.



Parts Specific to Model S-30

Item	Description	240V Single Phase	240V Three Phase	380V Three Phase	415V Three Phase	600V Three Phase
32	Tank with Gaskets	R01.02.008S.00	R01.02.008S.00	R01.02.008S.00	R01.02.008S.00	R01.02.008S.00
33	Heating Element Quantity	R02.04.501.00 6	R02.04.501.00 6	R02.04.611.00 6	R02.04.501.00 6	R02.04.510.00 6
34	Contactors Quantity	02.01.018.00 2	02.01.016.00 2	02.01.016.00 2	02.01.016.00 2	02.01.016.00 2
35	Transformer, Step Down	---	---	R02.17.003.00	R02.17.002.00	02.17.009.00
36	Terminal Block	02.15.007.00	02.15.046.00	R02.15.046.00	R02.15.046.00	R02.15.046.00
37	Indicator Light, Red	02.19.151.00	02.19.151.00	02.19.151.00	02.19.151.00	02.19.151.00
38A	Power Fuse Block Quantity	---	---	---	---	---
38B	Power Fuse Block Quantity	---	---	---	---	---
38C	Power Fuse Block Quantity	---	---	---	---	---
38D	Power Fuse Block Quantity	---	---	---	---	---
38E	Power Fuse Block Quantity	---	---	---	---	---
39A	Power Fuse (2 Pack) Quantity	---	---	---	---	---
39B	Power Fuse (2 Pack) Quantity	---	---	---	---	---
39C	Power Fuse (2 Pack) Quantity	---	---	---	---	---
39D	Power Fuse (2 Pack) Quantity	---	---	---	---	---
40	Control Fuse Block	02.03.004.00	02.03.004.00	---	---	02.03.016.00
41	Control Fuse (2 Pack) Electrical Diagram	R02.03.001.02 HC1-1175	R02.03.001.02 HC1-1174	R02.03.014.02 HC1-1179	R02.03.014.02 HC1-1179	R02.03.021.02 HC1-1179

Shaded area reflects international models only.



Parts Specific to Model S-36

Item	Description	208V		208V		240V		480V		480V		208V		208V	
		Single Phase	Three Phase	Single Phase	Three Phase	Single Phase	Three Phase	Single Phase	Three Phase	Single Phase	Three Phase	Single Phase	Three Phase	Single Phase	Three Phase
32	Tank with Gaskets	R01.02.008S.00	R01.02.008S.00	R01.02.008S.00	R01.02.008S.00	R01.02.008S.00	R01.02.008S.00	---	---	---	R01.02.008S.00	R01.02.008S.00	R01.02.008S.00	R01.02.008S.00	R01.02.008S.00
33	Heating Element	R02.04.610.00	R02.04.610.00	R02.04.611.00	R02.04.611.00	R02.04.611.00	R02.04.611.00	---	---	---	R02.04.613.00	R02.04.610.00	R02.04.610.00	R02.04.610.00	R02.04.610.00
	Quantity	6	6	6	6	6	6	---	---	---	6	6	6	6	6
34	Contactors	02.01.015.00	02.01.015.00	02.01.015.00	02.01.015.00	02.01.015.00	02.01.015.00	---	---	---	02.01.015.00	02.01.018.00	02.01.018.00	02.01.016.00	02.01.016.00
	Quantity	4	4	4	4	4	2	---	---	---	2	2	2	2	2
35	Transformer, Step Down	02.17.004.00	02.17.004.00	02.17.004.00	02.17.004.00	02.17.004.00	02.17.004.00	---	---	---	02.17.005.00	---	---	---	---
36	Terminal Block	02.15.007.00	---	02.15.007.00	---	---	---	---	---	---	R02.15.046.00	02.15.007.00	02.15.046.00	02.15.046.00	02.15.046.00
37	Indicator Light, Red	02.19.154.00	02.19.154.00	02.19.154.00	02.19.154.00	02.19.154.00	02.19.154.00	---	---	---	02.19.154.00	02.19.151.00	02.19.151.00	02.19.151.00	02.19.151.00
38A	Power Fuse Block	02.41.010.00	---	02.41.010.00	---	---	---	---	---	---	---	---	---	---	---
	Quantity	4	---	4	---	---	---	---	---	---	---	---	---	---	---
38B	Power Fuse Block	---	02.41.015.00	---	---	---	---	---	---	---	---	---	---	---	---
	Quantity	---	3	---	---	---	---	---	---	---	---	---	---	---	---
38C	Power Fuse Block	---	---	---	---	02.41.001.00	---	---	---	---	---	---	---	---	---
	Quantity	---	---	---	---	1	---	---	---	---	---	---	---	---	---
38D	Power Fuse Block	---	---	---	---	02.41.005.00	---	---	---	---	---	---	---	---	---
	Quantity	---	---	---	---	1	---	---	---	---	---	---	---	---	---
38E	Power Fuse Block	---	---	---	---	---	---	---	---	---	---	---	---	---	---
	Quantity	---	---	---	---	---	---	---	---	---	---	---	---	---	---
39A	Power Fuse (2 Pack) (40 Amp)	R02.03.031.02	R02.03.031.02	R02.03.031.02	R02.03.031.02	---	---	---	---	---	---	---	---	---	---
	Quantity	6	6	6	6	---	---	---	---	---	---	---	---	---	---
39B	Power Fuse (2 Pack) (60 Amp)	---	---	---	---	R02.03.033.02	---	---	---	---	---	---	---	---	---
	Quantity	---	---	---	---	3	---	---	---	---	---	---	---	---	---
39C	Power Fuse (2 Pack)	---	---	---	---	---	---	---	---	---	---	---	---	---	---
	Quantity	---	---	---	---	---	---	---	---	---	---	---	---	---	---
39D	Power Fuse (2 Pack)	---	---	---	---	---	---	---	---	---	---	---	---	---	---
	Quantity	---	---	---	---	---	---	---	---	---	---	---	---	---	---
40	Control Fuse Block	02.03.022.00	02.03.022.00	02.03.022.00	02.03.022.00	02.03.022.00	02.03.022.00	---	---	---	02.03.023.00	02.03.004.00	02.03.004.00	02.03.004.00	02.03.004.00
41	Control Fuse (2 Pack)	R02.03.014.02	R02.03.014.02	R02.03.014.02	R02.03.014.02	R02.03.014.02	R02.03.014.02	---	---	---	R02.03.013.02	R02.03.001.02	R02.03.001.02	R02.03.001.02	R02.03.001.02
	Electrical Diagram	HC1-2507	HC1-2507	HC1-2507	HC1-2507	HC1-2501	HC1-2501	---	---	---	HC1-2503	HC1-1175	HC1-1174	HC1-1174	HC1-1174

Shaded area reflects international models only.



Parts Specific to Model S-36

Item	Description	240V Single Phase	240V Three Phase	380V Three Phase	415V Three Phase	600V Three Phase
32	Tank with Gaskets	R01.02.008S.00	R01.02.008S.00	R01.02.008S.00	R01.02.008S.00	R01.02.008S.00
33	Heating Element Quantity	R02.04.611.00 6	R02.04.611.00 6	R02.04.601.00 6	R02.04.603.00 6	R02.04.612.00 6
34	Contact Quantity	02.01.018.00 2	02.01.016.00 2	02.01.016.00 2	02.01.016.00 2	02.01.016.00 2
35	Transformer, Step Down	---	---	R02.17.003.00	R02.17.002.00	02.17.009.00
36	Terminal Block	02.15.007.00	02.15.046.00	R02.15.046.00	R02.15.046.00	R02.15.046.00
37	Indicator Light, Red	02.19.151.00	02.19.151.00	02.19.151.00	02.19.151.00	02.19.151.00
38A	Power Fuse Block Quantity	---	---	---	---	---
38B	Power Fuse Block Quantity	---	---	---	---	---
38C	Power Fuse Block Quantity	---	---	---	---	---
38D	Power Fuse Block Quantity	---	---	---	---	---
38E	Power Fuse Block Quantity	---	---	---	---	---
39A	Power Fuse (2 Pack) Quantity	---	---	---	---	---
39B	Power Fuse (2 Pack) Quantity	---	---	---	---	---
39C	Power Fuse (2 Pack) Quantity	---	---	---	---	---
39D	Power Fuse (2 Pack) Quantity	---	---	---	---	---
40	Control Fuse Block	02.03.004.00	02.03.004.00	---	---	02.03.016.00
41	Control Fuse (2 Pack) Electrical Diagram	R02.03.001.02 HC1-1175	R02.03.001.02 HC1-1174	R02.03.014.02 HC1-1179	R02.03.014.02 HC1-1179	R02.03.021.02 HC1-1179

Shaded area reflects international models only.



Parts Specific to Model S-39

Item	Description	208V		208V		240V		240V		480V		480V		208V		208V	
		Single Phase	Three Phase	Single Phase	Three Phase	Single Phase	Three Phase	Single Phase	Three Phase	Single Phase	Three Phase	Single Phase	Three Phase	Single Phase	Three Phase	Single Phase	Three Phase
32	Tank with Gaskets	R01.02.008S.00	R01.02.008S.00	R01.02.008S.00	R01.02.008S.00	R01.02.008S.00	R01.02.008S.00	---	---	---	R01.02.008S.00	R01.02.008S.00	R01.02.008S.00	R01.02.008S.00	R01.02.008S.00	R01.02.008S.00	R01.02.008S.00
33	Heating Element	R02.04.650.00	R02.04.650.00	R02.04.653.00	R02.04.653.00	R02.04.653.00	R02.04.653.00	---	---	---	R02.04.653.00	R02.04.650.00	R02.04.650.00	R02.04.650.00	R02.04.650.00	R02.04.650.00	R02.04.650.00
	Quantity	6	6	6	6	6	6	---	---	---	6	6	6	6	6	6	6
34	Contactors	02.01.015.00	02.01.015.00	02.01.015.00	02.01.015.00	02.01.015.00	02.01.015.00	---	---	---	02.01.015.00	02.01.015.00	02.01.015.00	02.01.015.00	02.01.015.00	02.01.015.00	02.01.015.00
	Quantity	4	4	4	4	4	2	---	---	---	2	2	2	2	2	2	2
35	Transformer, Step Down	02.17.004.00	02.17.004.00	02.17.004.00	02.17.004.00	02.17.004.00	02.17.004.00	---	---	---	02.17.004.00	02.17.005.00	02.17.005.00	02.17.005.00	02.17.005.00	02.17.005.00	02.17.005.00
36	Terminal Block	02.15.007.00	---	02.15.007.00	---	02.15.007.00	---	---	---	---	02.15.007.00	02.15.003.00	02.15.003.00	02.15.007.00	02.15.007.00	02.15.007.00	02.15.007.00
37	Indicator Light, Red	02.19.154.00	02.19.154.00	02.19.154.00	02.19.154.00	02.19.154.00	02.19.154.00	---	---	---	02.19.154.00	02.19.151.00	02.19.151.00	02.19.151.00	02.19.151.00	02.19.151.00	02.19.151.00
38A	Power Fuse Block	02.41.010.00	---	02.41.010.00	---	02.41.010.00	---	---	---	---	---	---	---	---	---	---	---
	Quantity	4	---	4	---	4	---	---	---	---	---	---	---	---	---	---	---
38B	Power Fuse Block	---	02.41.015.00	---	---	---	---	---	---	---	---	---	---	---	---	---	---
	Quantity	---	3	---	---	---	---	---	---	---	---	---	---	---	---	---	---
38C	Power Fuse Block	---	---	---	02.41.005.00	---	---	---	---	---	---	---	---	---	---	---	---
	Quantity	---	---	---	1	---	---	---	---	---	---	---	---	---	---	---	---
38D	Power Fuse Block	---	---	---	02.41.001.00	---	---	---	---	---	---	---	---	---	---	---	---
	Quantity	---	---	---	1	---	---	---	---	---	---	---	---	---	---	---	---
38E	Power Fuse Block	---	---	---	---	---	---	---	---	---	---	---	---	---	---	---	---
	Quantity	---	---	---	---	---	---	---	---	---	---	---	---	---	---	---	---
39A	Power Fuse (2 Pack) (40 Amp)	R02.03.031.02	R02.03.031.02	R02.03.031.02	R02.03.031.02	R02.03.031.02	R02.03.031.02	---	---	---	---	---	---	---	---	---	---
	Quantity	6	6	6	6	6	6	---	---	---	---	---	---	---	---	---	---
39B	Power Fuse (2 Pack) (60 Amp)	---	---	---	R02.03.033.02	---	---	---	---	---	---	---	---	---	---	---	---
	Quantity	---	---	---	3	---	---	---	---	---	---	---	---	---	---	---	---
39C	Power Fuse (2 Pack)	---	---	---	---	---	---	---	---	---	---	---	---	---	---	---	---
	Quantity	---	---	---	---	---	---	---	---	---	---	---	---	---	---	---	---
39D	Power Fuse (2 Pack)	---	---	---	---	---	---	---	---	---	---	---	---	---	---	---	---
	Quantity	---	---	---	---	---	---	---	---	---	---	---	---	---	---	---	---
40	Control Fuse Block	02.03.022.00	02.03.022.00	02.03.022.00	02.03.022.00	02.03.022.00	02.03.022.00	---	---	---	02.03.023.00	02.03.023.00	02.03.023.00	02.03.023.00	02.03.023.00	02.03.023.00	02.03.023.00
41	Control Fuse (2 Pack)	R02.03.014.02	R02.03.014.02	R02.03.014.02	R02.03.014.02	R02.03.014.02	R02.03.014.02	---	---	---	R02.03.013.02	R02.03.013.02	R02.03.013.02	R02.03.013.02	R02.03.013.02	R02.03.013.02	R02.03.013.02
	Electrical Diagram	HC1-2507	HC1-2507	HC1-2507	HC1-2507	HC1-2507	HC1-2507	---	---	---	HC1-2503	HC1-2503	HC1-2503	HC1-1175	HC1-1175	HC1-1174	HC1-1174

Shaded area reflects international models only.



Parts Specific to Model S-39

Item	Description	240V Single Phase	240V Three Phase	380V Three Phase	415V Three Phase	600V Three Phase
32	Tank with Gaskets	R01.02.008S.00	R01.02.008S.00	R01.02.008S.00	R01.02.008S.00	R01.02.008S.00
33	Heating Element Quantity	R02.04.653.00 6	R02.04.653.00 6	R02.04.651.00 6	R02.04.653.00 6	R02.04.654.00 6
34	Contactors Quantity	02.01.018.00 2	02.01.016.00 2	02.01.016.00 2	02.01.016.00 2	02.01.016.00 2
35	Transformer, Step Down	---	---	R02.17.003.00	R02.17.002.00	02.17.009.00
36	Terminal Block	02.15.007.00	02.15.046.00	R02.15.046.00	R02.15.046.00	R02.15.046.00
37	Indicator Light, Red	02.19.151.00	02.19.151.00	02.19.151.00	02.19.151.00	02.19.151.00
38A	Power Fuse Block Quantity	---	---	---	---	---
38B	Power Fuse Block Quantity	---	---	---	---	---
38C	Power Fuse Block Quantity	---	---	---	---	---
38D	Power Fuse Block Quantity	---	---	---	---	---
38E	Power Fuse Block Quantity	---	---	---	---	---
39A	Power Fuse (2 Pack) Quantity	---	---	---	---	---
39B	Power Fuse (2 Pack) Quantity	---	---	---	---	---
39C	Power Fuse (2 Pack) Quantity	---	---	---	---	---
39D	Power Fuse (2 Pack) Quantity	---	---	---	---	---
40	Control Fuse Block	02.03.004.00	02.03.004.00	---	---	02.03.016.00
41	Control Fuse (2 Pack) Electrical Diagram	R02.03.001.02 HC1-1175	R02.03.001.02 HC1-1174	R02.03.014.02 HC1-1179	R02.03.014.02 HC1-1179	R02.03.021.02 HC1-1179

Shaded area reflects international models only.



Parts Specific to Model S-40

Item	Description	208V		240V		480V		208V	
		Single Phase	Three Phase	Single Phase	Three Phase	Single Phase	Three Phase	Single Phase	Three Phase
32	Tank with Gaskets	---	R01.02.009S.00	---	R01.02.009S.00	---	R01.02.009S.00	---	R01.02.009S.00
33	Heating Element	---	R02.04.450.00	---	R02.04.451.00	---	R02.04.453.00	---	R02.04.450.00
	Quantity	---	9	---	9	---	9	---	9
34	Contactors	---	02.01.015.00	---	02.01.015.00	---	02.01.015.00	---	02.01.016.00
	Quantity	---	3	---	3	---	3	---	3
35	Transformer, Step Down	---	02.17.004.00	---	02.17.004.00	---	02.17.005.00	---	---
36	Terminal Block	---	---	---	---	---	R02.15.046.00	---	02.15.008.00
37	Indicator Light, Red	---	02.19.154.00	---	02.19.154.00	---	02.19.154.00	---	02.19.151.00
38A	Power Fuse Block	---	02.41.010.00	---	02.41.010.00	---	---	---	---
	Quantity	---	3	---	3	---	---	---	---
38B	Power Fuse Block	---	---	---	---	---	02.41.030.00	---	---
	Quantity	---	---	---	---	---	2	---	---
38C	Power Fuse Block	---	---	---	---	---	---	---	---
	Quantity	---	---	---	---	---	---	---	---
38D	Power Fuse Block	---	---	---	---	---	---	---	---
	Quantity	---	---	---	---	---	---	---	---
38E	Power Fuse Block	---	---	---	---	---	---	---	---
	Quantity	---	---	---	---	---	---	---	---
39A	Power Fuse (2 Pack) (50 Amp)	---	R02.03.032.02	---	R02.03.032.02	---	---	---	---
	Quantity	---	5	---	5	---	---	---	---
39B	Power Fuse (2 Pack) (35 Amp)	---	---	---	---	---	R02.03.010.02	---	---
	Quantity	---	---	---	---	---	2	---	---
39C	Power Fuse (2 Pack) (60 Amp)	---	---	---	---	---	R02.03.015.02	---	---
	Quantity	---	---	---	---	---	2	---	---
39D	Power Fuse (2 Pack)	---	---	---	---	---	---	---	---
	Quantity	---	---	---	---	---	---	---	---
40	Control Fuse Block	---	02.03.022.00	---	02.03.022.00	---	02.03.023.00	---	02.03.004.00
41	Control Fuse (2 Pack)	---	R02.03.014.02	---	R02.03.014.02	---	R02.03.013.02	---	R02.03.001.02
	Electrical Diagram	---	HC1-2509	---	HC1-2509	---	HC1-2513	---	HC1-1177

Shaded area reflects international models only.

Parts Specific to Model S-40

Item	Description	240V Single Phase	240V Three Phase	380V Three Phase	415V Three Phase	600V Three Phase
32	Tank with Gaskets	---	R01.02.009S.00	R01.02.009S.00	R01.02.009S.00	R01.02.009S.00
33	Heating Element Quantity	---	R02.04.451.00 9	R02.04.501.00 9	R02.04.451.00 9	R02.04.452.00 9
34	Contactors Quantity	---	02.01.016.00 3	02.01.016.00 3	02.01.016.00 3	02.01.016.00 3
35	Transformer, Step Down	---	---	R02.17.003.00	R02.17.002.00	02.17.009.00
36	Terminal Block	---	02.15.008.00	02.15.046.00	02.15.046.00	02.15.046.00
37	Indicator Light, Red	---	02.19.151.00	02.19.151.00	02.19.151.00	02.19.151.00
38A	Power Fuse Block Quantity	---	---	---	---	---
38B	Power Fuse Block Quantity	---	---	---	---	---
38C	Power Fuse Block Quantity	---	---	---	---	---
38D	Power Fuse Block Quantity	---	---	---	---	---
38E	Power Fuse Block Quantity	---	---	---	---	---
39A	Power Fuse (2 Pack) Quantity	---	---	---	---	---
39B	Power Fuse (2 Pack) Quantity	---	---	---	---	---
39C	Power Fuse (2 Pack) Quantity	---	---	---	---	---
39D	Power Fuse (2 Pack) Quantity	---	---	---	---	---
40	Control Fuse Block	---	02.03.004.00	---	---	02.03.016.00
41	Control Fuse (2 Pack) Electrical Diagram	---	R02.03.001.02 HC1-1177	R02.03.014.02 HC1-1180	R02.03.014.02 HC1-1180	R02.03.021.02 HC1-1180

Shaded area reflects international models only.

Parts Specific to Model S-45

Item	Description	208V		240V		480V		208V	
		Single Phase	Three Phase	Single Phase	Three Phase	Single Phase	Three Phase	Single Phase	Three Phase
32	Tank with Gaskets	---	R01.02.009S.00	R01.02.008S.00	R01.02.009S.00	---	R01.02.009S.00	---	R01.02.009S.00
33	Heating Element	---	R02.04.500.00	R02.04.701.00	R02.04.501.00	---	R02.04.502.00	---	R02.04.500.00
	Quantity	---	9	6	9	---	9	---	9
34	Contactors	---	02.01.015.00	02.01.015.00	02.01.015.00	---	02.01.015.00	---	02.01.016.00
	Quantity	---	3	4	3	---	3	---	3
35	Transformer, Step Down	---	02.17.004.00	02.17.004.00	02.17.004.00	---	02.17.005.00	---	---
36	Terminal Block	---	---	02.15.007.00	---	---	02.15.046.00	---	02.15.008.00
37	Indicator Light, Red	---	02.19.154.00	02.19.154.00	02.19.154.00	---	02.19.154.00	---	02.19.151.00
38A	Power Fuse Block	---	02.41.010.00	02.41.010.00	02.41.010.00	---	---	---	---
	Quantity	---	3	4	3	---	---	---	---
38B	Power Fuse Block	---	---	---	02.41.030.00	---	---	---	---
	Quantity	---	---	---	2	---	---	---	---
38C	Power Fuse Block	---	---	---	---	---	---	---	---
	Quantity	---	---	---	---	---	---	---	---
38D	Power Fuse Block	---	---	---	---	---	---	---	---
	Quantity	---	---	---	---	---	---	---	---
38E	Power Fuse Block	---	---	---	---	---	---	---	---
	Quantity	---	---	---	---	---	---	---	---
39A	Power Fuse (2 Pack) (40 Amp)	---	---	R02.03.031.02	---	---	---	---	---
	Quantity	---	---	6	---	---	---	---	---
39B	Power Fuse (2 Pack) (60 Amp)	---	R02.03.033.02	---	R02.03.033.02	---	---	---	---
	Quantity	---	5	---	5	---	---	---	---
39C	Power Fuse (2 Pack) (35 Amp)	---	---	---	---	---	R02.03.010.02	---	---
	Quantity	---	---	---	---	---	2	---	---
39D	Power Fuse (2 Pack) (60 Amp)	---	---	---	---	---	R02.03.015.02	---	---
	Quantity	---	---	---	---	---	2	---	---
40	Control Fuse Block	---	02.03.022.00	02.03.022.00	02.03.022.00	---	02.03.023.00	---	02.03.004.00
41	Control Fuse (2 Pack)	---	R02.03.014.02	R02.03.014.02	R02.03.014.02	---	R02.03.013.02	---	R02.03.001.02
	Electrical Diagram	---	HC1-2509	HC1-2511	HC1-2509	---	HC1-2513	---	HC1-1177

Shaded area reflects international models only.

Parts Specific to Model S-45

Item	Description	240V					600V				
		Single Phase	240V Three Phase	380V Three Phase	415V Three Phase	600V Three Phase	Single Phase	240V Three Phase	380V Three Phase	415V Three Phase	600V Three Phase
32	Tank with Gaskets	---	R01.02.009S.00	R01.02.009S.00	R01.02.009S.00	R01.02.009S.00	R01.02.009S.00	R01.02.009S.00	R01.02.009S.00	R01.02.009S.00	
33	Heating Element Quantity	---	R02.04.501.00 9	R02.04.603.00 9	R02.04.501.00 9	R02.04.501.00 9	R02.04.501.00 9	R02.04.501.00 9	R02.04.501.00 9	R02.04.510.00 9	
34	Contactors Quantity	---	02.01.016.00 3	02.01.016.00 3	02.01.016.00 3	02.01.016.00 3	02.01.016.00 3	02.01.016.00 3	02.01.016.00 3	02.01.016.00 3	
35	Transformer, Step Down	---	---	R02.17.003.00	R02.17.003.00	R02.17.003.00	R02.17.003.00	R02.17.003.00	R02.17.003.00	R02.17.003.00	
36	Terminal Block	---	02.15.008.00	02.15.046.00	02.15.046.00	02.15.046.00	02.15.046.00	02.15.046.00	02.15.046.00	02.15.046.00	
37	Indicator Light, Red	---	02.19.151.00	02.19.151.00	02.19.151.00	02.19.151.00	02.19.151.00	02.19.151.00	02.19.151.00	02.19.151.00	
38A	Power Fuse Block Quantity	---	---	---	---	---	---	---	---	---	
38B	Power Fuse Block Quantity	---	---	---	---	---	---	---	---	---	
38C	Power Fuse Block Quantity	---	---	---	---	---	---	---	---	---	
38D	Power Fuse Block Quantity	---	---	---	---	---	---	---	---	---	
38E	Power Fuse Block Quantity	---	---	---	---	---	---	---	---	---	
39A	Power Fuse (2 Pack) Quantity	---	---	---	---	---	---	---	---	---	
39B	Power Fuse (2 Pack) Quantity	---	---	---	---	---	---	---	---	---	
39C	Power Fuse (2 Pack) Quantity	---	---	---	---	---	---	---	---	---	
39D	Power Fuse (2 Pack) Quantity	---	---	---	---	---	---	---	---	---	
40	Control Fuse Block	---	02.03.004.00	02.03.014.02	02.03.014.02	02.03.014.02	02.03.014.02	02.03.014.02	02.03.014.02	02.03.016.00	
41	Control Fuse (2 Pack) Electrical Diagram	---	R02.03.001.02 HC1-1177	R02.03.014.02 HC1-1180	R02.03.014.02 HC1-1180	R02.03.014.02 HC1-1180	R02.03.014.02 HC1-1180	R02.03.014.02 HC1-1180	R02.03.021.02 HC1-1180	R02.03.021.02 HC1-1180	

Shaded area reflects international models only.



Parts Specific to Model S-54

Item	Description	208V		240V		480V		208V	
		Single Phase	Three Phase	Single Phase	Three Phase	Single Phase	Three Phase	Single Phase	Three Phase
32	Tank with Gaskets	---	R01.02.008S.00†	---	R01.02.009S.00	---	R01.02.009S.00	---	R01.02.009S.00
33	Heating Element	---	R02.04.710.00†	---	R02.04.611.00	---	R02.04.613.00	---	R02.04.610.00
	Quantity	---	6	---	9	---	9	---	9
34	Contactors	---	02.01.015.00	---	02.01.015.00	---	02.01.015.00	---	02.01.016.00
	Quantity	---	4	---	3	---	3	---	3
35	Transformer, Step Down	---	02.17.004.00	---	02.17.004.00	---	02.17.005.00	---	---
36	Terminal Block	---	---	---	---	---	02.15.046.00	---	02.15.008.00
37	Indicator Light, Red	---	02.19.154.00	---	02.19.154.00	---	02.19.154.00	---	02.19.151.00
38A	Power Fuse Block	---	---	---	02.41.010.00	---	---	---	---
	Quantity	---	---	---	3	---	---	---	---
38B	Power Fuse Block	---	---	---	---	---	02.41.030.00	---	---
	Quantity	---	---	---	---	---	2	---	---
38C	Power Fuse Block	---	02.41.020.00	---	---	---	---	---	---
	Quantity	---	1	---	---	---	---	---	---
38D	Power Fuse Block	---	02.41.021.00	---	---	---	---	---	---
	Quantity	---	1	---	---	---	---	---	---
38E	Power Fuse Block	---	02.41.022.00	---	---	---	---	---	---
	Quantity	---	1	---	---	---	---	---	---
39A	Power Fuse (2 Pack) (60 Amp)	---	R02.03.033.02	---	R02.03.033.02	---	---	---	---
	Quantity	---	6	---	5	---	---	---	---
39B	Power Fuse (2 Pack) (35 Amp)	---	---	---	---	---	R02.03.010.02	---	---
	Quantity	---	---	---	---	---	2	---	---
39C	Power Fuse (2 Pack) (60 Amp)	---	---	---	---	---	R02.03.015.02	---	---
	Quantity	---	---	---	---	---	2	---	---
39D	Power Fuse (2 Pack)	---	---	---	---	---	---	---	---
	Quantity	---	---	---	---	---	---	---	---
40	Control Fuse Block	---	02.03.022.00	---	02.03.022.00	---	02.03.023.00	---	02.03.004.00
41	Control Fuse (2 Pack)	---	R02.03.014.02	---	R02.03.014.02	---	R02.03.013.02	---	R02.03.001.02
	Electrical Diagram	---	HC1-2505	---	HC1-2509	---	HC1-2513	---	HC1-1177

Shaded area reflects **international models only**.

† Units manufactured before January 1980 may use a nine hole tank and nine heating elements. Consult factory with serial number for details.



Parts Specific to Model S-54

Item	Description	240V Single Phase	240V Three Phase	380V Three Phase	415V Three Phase	600V Three Phase
32	Tank with Gaskets	---	R01.02.009S.00	R01.02.009S.00	R01.02.009S.00	R01.02.009S.00
33	Heating Element Quantity	---	R02.04.611.00 9	R02.04.601.00 9	R02.04.603.00 9	R02.04.612.00 9
34	Contactors Quantity	---	02.01.016.00 3	02.01.016.00 3	02.01.016.00 3	02.01.016.00 3
35	Transformer, Step Down	---	---	R02.17.003.00	R02.17.002.00	02.17.009.00
36	Terminal Block	---	02.15.008.00	02.15.046.00	02.15.046.00	02.15.046.00
37	Indicator Light, Red	---	02.19.151.00	02.19.151.00	02.19.151.00	02.19.151.00
38A	Power Fuse Block Quantity	---	---	---	---	---
38B	Power Fuse Block Quantity	---	---	---	---	---
38C	Power Fuse Block Quantity	---	---	---	---	---
38D	Power Fuse Block Quantity	---	---	---	---	---
38E	Power Fuse Block Quantity	---	---	---	---	---
39A	Power Fuse (2 Pack) Quantity	---	---	---	---	---
39B	Power Fuse (2 Pack) Quantity	---	---	---	---	---
39C	Power Fuse (2 Pack) Quantity	---	---	---	---	---
39D	Power Fuse (2 Pack) Quantity	---	---	---	---	---
40	Control Fuse Block	---	02.03.004.00	---	---	02.03.016.00
41	Control Fuse (2 Pack) Electrical Diagram	---	R02.03.001.02 HC1-1177	R02.03.014.02 HC1-1180	R02.03.014.02 HC1-1180	R02.03.021.02 HC1-1180

Shaded area reflects international models only.



Parts Specific to Model S-57

Item	Description	208V		240V		480V		208V	
		Single Phase	Three Phase	Single Phase	Three Phase	Single Phase	Three Phase	Single Phase	Three Phase
32	Tank with Gaskets	---	R01.02.008S.00	---	R01.02.009S.00	---	R01.02.009S.00	---	R01.02.009S.00
33	Heating Element	---	R02.04.731.00	---	R02.04.632.00	---	R02.04.634.00	---	R02.04.630.00
	Quantity	---	6	---	9	---	9	---	9
34	Contactors	---	02.01.015.00	---	02.01.015.00	---	02.01.015.00	---	02.01.016.00
	Quantity	---	4	---	3	---	3	---	3
35	Transformer, Step Down	---	02.17.004.00	---	02.17.004.00	---	02.17.005.00	---	---
36	Terminal Block	---	---	---	---	---	02.15.046.00	---	02.15.008.00
37	Indicator Light, Red	---	02.19.154.00	---	02.19.154.00	---	02.19.154.00	---	02.19.151.00
38A	Power Fuse Block	---	---	---	02.41.010.00	---	---	---	---
	Quantity	---	---	---	3	---	---	---	---
38B	Power Fuse Block	---	---	---	---	---	02.41.030.00	---	---
	Quantity	---	---	---	---	---	2	---	---
38C	Power Fuse Block	---	02.41.020.00	---	---	---	---	---	---
	Quantity	---	1	---	---	---	---	---	---
38D	Power Fuse Block	---	02.41.021.00	---	---	---	---	---	---
	Quantity	---	1	---	---	---	---	---	---
38E	Power Fuse Block	---	02.41.022.00	---	---	---	---	---	---
	Quantity	---	1	---	---	---	---	---	---
39A	Power Fuse (2 Pack) (60 Amp)	---	R02.03.033.02	---	R02.03.033.02	---	---	---	---
	Quantity	---	6	---	5	---	---	---	---
39B	Power Fuse (2 Pack) (35 Amp)	---	---	---	---	---	R02.03.010.02	---	---
	Quantity	---	---	---	---	---	2	---	---
39C	Power Fuse (2 Pack) (60 Amp)	---	---	---	---	---	R02.03.015.02	---	---
	Quantity	---	---	---	---	---	2	---	---
39D	Power Fuse (2 Pack)	---	---	---	---	---	---	---	---
	Quantity	---	---	---	---	---	---	---	---
40	Control Fuse Block	---	02.03.022.00	---	02.03.022.00	---	02.03.023.00	---	02.03.004.00
41	Control Fuse (2 Pack)	---	R02.03.014.02	---	R02.03.014.02	---	R02.03.013.02	---	R02.03.001.02
	Electrical Diagram	---	HC1-2505	---	HC1-2509	---	HC1-2513	---	HC1-1177

Shaded area reflects international models only.



Parts Specific to Model S-57

Item	Description	240V Single Phase	240V Three Phase	380V Three Phase	415V Three Phase	600V Three Phase
32	Tank with Gaskets	---	R01.02.009S.00	R01.02.009S.00	R01.02.009S.00	R01.02.009S.00
33	Heating Element Quantity	---	R02.04.632.00 9	R02.04.631.00 9	R02.04.632.00 9	R02.04.633.00 9
34	Contactors Quantity	---	02.01.016.00 3	02.01.016.00 3	02.01.016.00 3	02.01.016.00 3
35	Transformer, Step Down	---	---	R02.17.003.00	R02.17.002.00	02.17.009.00
36	Terminal Block	---	02.15.008.00	02.15.046.00	02.15.046.00	02.15.046.00
37	Indicator Light, Red	---	02.19.151.00	02.19.151.00	02.19.151.00	02.19.151.00
38A	Power Fuse Block Quantity	---	---	---	---	---
38B	Power Fuse Block Quantity	---	---	---	---	---
38C	Power Fuse Block Quantity	---	---	---	---	---
38D	Power Fuse Block Quantity	---	---	---	---	---
38E	Power Fuse Block Quantity	---	---	---	---	---
39A	Power Fuse (2 Pack) Quantity	---	---	---	---	---
39B	Power Fuse (2 Pack) Quantity	---	---	---	---	---
39C	Power Fuse (2 Pack) Quantity	---	---	---	---	---
39D	Power Fuse (2 Pack) Quantity	---	---	---	---	---
40	Control Fuse Block	---	02.03.004.00	---	---	02.03.016.00
41	Control Fuse (2 Pack) Electrical Diagram	---	R02.03.001.02 HC1-1177	R02.03.014.02 HC1-1180	R02.03.014.02 HC1-1180	R02.03.021.02 HC1-1180

Shaded area reflects international models only.



Parts Specific to Model S-58

Item	Description	208V		240V		480V		208V	
		Single Phase	Three Phase	Single Phase	Three Phase	Single Phase	Three Phase	Single Phase	Three Phase
32	Tank with Gaskets	---	R01.02.008S.00†	---	R01.02.009S.00	---	R01.02.009S.00	---	R01.02.009S.00
33	Heating Element	---	R02.04.720.00†	---	R02.04.653.00	---	R02.04.655.00	---	R02.04.650.00
	Quantity	---	6	---	9	---	9	---	9
34	Contactors	---	02.01.015.00	---	02.01.015.00	---	02.01.015.00	---	02.01.016.00
	Quantity	---	4	---	3	---	3	---	3
35	Transformer, Step Down	---	02.17.004.00	---	02.17.004.00	---	02.17.005.00	---	---
36	Terminal Block	---	---	---	---	---	02.15.046.00	---	02.15.008.00
37	Indicator Light, Red	---	02.19.154.00	---	02.19.154.00	---	02.19.154.00	---	02.19.151.00
38A	Power Fuse Block	---	---	---	02.41.010.00	---	---	---	---
	Quantity	---	---	---	3	---	---	---	---
38B	Power Fuse Block	---	---	---	---	---	02.41.030.00	---	---
	Quantity	---	---	---	---	---	2	---	---
38C	Power Fuse Block	---	02.41.020.00	---	---	---	---	---	---
	Quantity	---	1	---	---	---	---	---	---
38D	Power Fuse Block	---	02.41.021.00	---	---	---	---	---	---
	Quantity	---	1	---	---	---	---	---	---
38E	Power Fuse Block	---	02.41.022.00	---	---	---	---	---	---
	Quantity	---	1	---	---	---	---	---	---
39A	Power Fuse (2 Pack) (60 Amp)	---	R02.03.033.02	---	R02.03.033.02	---	---	---	---
	Quantity	---	6	---	5	---	---	---	---
39B	Power Fuse (2 Pack) (35 Amp)	---	---	---	---	---	R02.03.010.02	---	---
	Quantity	---	---	---	---	---	2	---	---
39C	Power Fuse (2 Pack) (60 Amp)	---	---	---	---	---	R02.03.015.02	---	---
	Quantity	---	---	---	---	---	2	---	---
39D	Power Fuse (2 Pack)	---	---	---	---	---	---	---	---
	Quantity	---	---	---	---	---	---	---	---
40	Control Fuse Block	---	02.03.022.00	---	02.03.022.00	---	02.03.023.00	---	02.03.004.00
41	Control Fuse (2 Pack)	---	R02.03.014.02	---	R02.03.014.02	---	R02.03.013.02	---	R02.03.001.02
	Electrical Diagram	---	HC1-2505	---	HC1-2509	---	HC1-2513	---	HC1-1177

Shaded area reflects **international models only**.

† Units manufactured before January 1980 may use a nine hole tank and nine heating elements. Consult factory with serial number for details.

Parts Specific to Model S-58

Item	Description	240V Single Phase	240V Three Phase	380V Three Phase	415V Three Phase	600V Three Phase
32	Tank with Gaskets	---	R01.02.009S.00	R01.02.009S.00	R01.02.009S.00	R01.02.009S.00
33	Heating Element Quantity	---	R02.04.653.00 9	R02.04.651.00 9	R02.04.653.00 9	R02.04.654.00 9
34	Contactors Quantity	---	02.01.016.00 3	02.01.016.00 3	02.01.016.00 3	02.01.016.00 3
35	Transformer, Step Down	---	---	R02.17.003.00	R02.17.002.00	02.17.009.00
36	Terminal Block	---	02.15.008.00	02.15.046.00	02.15.046.00	02.15.046.00
37	Indicator Light, Red	---	02.19.151.00	02.19.151.00	02.19.151.00	02.19.151.00
38A	Power Fuse Block Quantity	---	---	---	---	---
38B	Power Fuse Block Quantity	---	---	---	---	---
38C	Power Fuse Block Quantity	---	---	---	---	---
38D	Power Fuse Block Quantity	---	---	---	---	---
38E	Power Fuse Block Quantity	---	---	---	---	---
39A	Power Fuse (2 Pack) Quantity	---	---	---	---	---
39B	Power Fuse (2 Pack) Quantity	---	---	---	---	---
39C	Power Fuse (2 Pack) Quantity	---	---	---	---	---
39D	Power Fuse (2 Pack) Quantity	---	---	---	---	---
40	Control Fuse Block	---	02.03.004.00	---	---	02.03.016.00
41	Control Fuse (2 Pack) Electrical Diagram	---	R02.03.001.02 HC1-1177	R02.03.014.02 HC1-1180	R02.03.014.02 HC1-1180	R02.03.021.02 HC1-1180

Shaded area reflects international models only.



AUTHORIZED PARTS DISTRIBUTORS • DISTRIBUTEURS DE PIÈCES AUTORISÉS

ALABAMA

Jones McLeod Appl. Svc.
Birmingham 205-251-0159

ARIZONA

Service Solutions Group
Phoenix 602-234-2443

Byassee Equipment Co.
Phoenix 602-252-0402

CALIFORNIA

Industrial Electric
Commercial Parts & Service, Inc.
Huntington Beach 714-379-7100

Chapman Appl. Service
San Diego 619-298-7106

P & D Appliance
Commercial Parts & Service, Inc.
S. San Francisco 650-635-1900

COLORADO

Hawkins Commercial Appliance
Englewood 303-781-5548

FLORIDA

Whaley Foodservice Repair
Jacksonville 904-725-7800

Whaley Foodservice Repair
Orlando 407-757-0851

B.G.S.I.
Pompano Beach 954-971-0456

Comm. Appliance Service
Tampa 813-663-0313

GEORGIA

TWC Services
Mableton 770-438-9797

Heritage Service Group
Norcross 866-388-9837

Southeastern Rest. Svc.
Norcross 770-446-6177

HAWAII

Burney's Comm. Service, Inc.
Honolulu 808-848-1466

Food Equip Parts & Service
Honolulu 808-847-4871

ILLINOIS

Parts Town
Lombard 708-865-7278

Eichenauer Elec. Service
Decatur 217-429-4229

Midwest Elec. Appl. Service
Elmhurst 630-279-8000

Cone's Repair Service
Moline 309-797-5323

INDIANA

GCS Service
Indianapolis 800-727-8710

IOWA

Goodwin Tucker Group
Des Moines 515-262-9308

KENTUCKY

Service Solutions Group
Lexington 859-254-8854

Service Solutions Group
Louisville 502-451-5411

LOUISIANA

Chandlers Parts & Service
Baton Rouge 225-272-6620

MARYLAND

Electric Motor Service
Baltimore 410-467-8080

GCS Service
Silver Spring 301-585-7550

MASSACHUSETTS

Ace Service Co., Inc.
Needham 781-449-4220

MICHIGAN

Bildons Appliance Service
Detroit 248-478-3320

Commercial Kitchen Service
Bay City 989-893-4561

Midwest Food Equip. Service
Grandville 616-261-2000

MINNESOTA

GCS Service
Minnetonka 800-822-2303
x20365

MISSOURI

General Parts
Kansas City 816-421-5400

Commercial Kitchen Services
St. Louis 314-890-0700

Kaemmerlen Parts & Service
St. Louis 314-535-2222

NEBRASKA

Anderson Electric
Omaha 402-341-1414

NEVADA

Burney's Commercial
Las Vegas 702-736-0006

Hi. Tech Commercial Service
N. Las Vegas 702-649-4616

NEW JERSEY

Jay Hill Repair
Fairfield 973-575-9145

Service Plus
Flanders 973-691-6300

NEW YORK

Acme American Repairs, Inc.
Jamaica 718-456-6544

Alpro Service Co.
Maspeth 718-386-2515

Appliance Installation
Buffalo 716-884-7425

Duffy's Equipment Services, Inc.
Buffalo 800-836-1014

3Wire Northern
Plattsburgh 800-634-5005

Duffy's Equipment Services, Inc.
Sauquoit 800-836-1014

J.B. Brady, Inc.
Syracuse 315-422-9271

NORTH CAROLINA

Authorized Appliance
Charlotte 704-377-4501

OHIO

Akron/Canton Comm. Svc. Inc.
Akron 330-753-6634

Service Solutions Group
Cincinnati 513-772-6600

Commercial Parts and Service
Columbus 614-221-0057

Electrical Appl. Repair Service
Brooklyn Heights 216-459-8700

E. A. Wichman Co.
Toledo 419-385-9121

OKLAHOMA

Hagar Rest. Service, Inc.
Oklahoma City 405-235-2184

Krueger, Inc.
Oklahoma City 405-528-8883

OREGON
Ron's Service, Inc.
Portland 503-624-0890

PENNSYLVANIA

Elmer Schultz Services
Philadelphia 215-627-5401

FAST Comm. Appl. Service
Philadelphia 215-288-4800

Appliance Installation & Service
Pittsburgh 412-809-0244

K & D Service Co.
Harrisburg 717-236-9039

Electric Repair Co.
Reading 610-376-5444

RHODE ISLAND

Marshall Electric Co.
Providence 401-331-1163

SOUTH CAROLINA

Whaley Foodservice Repair
Lexington 803-996-9900

TENNESSEE

Camp Electric
Memphis 901-527-7543

TEXAS

GCS Service
Fort Worth 800-433-1804

Armstrong Repair Service
Houston 713-666-7100

Cooking Equipment Specialist
Mesquite 972-686-6666

Commercial Kitchen Repair Co.
San Antonio 210-735-2811

UTAH

La Monica's Rest. Equip. Service
Murray 801-263-3221

VIRGINIA

Daubers
Norfolk 757-855-4097

Daubers
Springfield 703-866-3600

WASHINGTON

3Wire Restaurant Appliance
Seattle 800-207-3146

WISCONSIN

A.S.C., Inc.
Madison 608-246-3160

A.S.C., Inc.
Milwaukee 414-543-6460

CANADA

ALBERTA

Key Food Equipment Service
Edmonton 780-438-1690

BRITISH COLUMBIA

Key Food Equipment Service
Vancouver 604-433-4484

Key Food Equipment Service
Victoria 250-920-4888

MANITOBA

Air Rite, Inc.
Winnipeg 204-895-2300

NEW BRUNSWICK

EMR Services, Ltd.
Moncton 506-855-4228

ONTARIO

R.G. Henderson Ltd.
Toronto 416-422-5580

Choquette - CKS, Inc.
Ottawa 613-739-8458

QUÉBEC

Choquette - CKS, Inc.
Montreal 514-722-2000

Choquette - CKS, Inc.
Québec City 418-681-3944

UNITED KINGDOM

Marren Group
Northants +44(0)1933 665313

HATCO CORPORATION

P.O. Box 340500

Milwaukee, WI 53234-0500 U.S.A.

800-558-0607 414-671-6350

partsandservice@hatcocorp.com

www.hatcocorp.com



24 Hour 7 Day Parts and Service
Assistance available in the United States
and Canada by calling 800-558-0607.