



DOMESTIC FOODSERVICE EQUIPMENT - SUPPLEMENTAL PRICE LIST



Optional Dekton® Ultracompact Stone Surfaces for Hot/Cold Built-In Simulated Stone Shelves

Hatco's HCSSBR and HCSSBX Hot/Cold Built-In Simulated Stone Shelves not only easily transition between heated and cold shelves, but now include Dekton® stone as an optional surface. The optional Dekton surface comes in three stone colors: Domoos, Rem and Soke*.

Dekton® is a sophisticated mixture of over twenty minerals extracted from nature, resistant to scratches and impact. Dekton® stone can withstand abrasion better than granite or porcelain. The sintering and compression techniques used to manufacture Dekton® make it completely non-porous and resistant to water and stains, which can be removed easily with standard cleaning products.

* Due to the natural texture, patterns will vary.

- A carbon neutral product
- Abrasion, impact, scratch and heat resistant
- Contains a non-porous surface, making it water and stain resistant
- Available in Rem, Soke and Domoos



HCSSBR-4818
with optional Domoos surface by Dekton®



HCSSBX-4818
with optional Rem surface by Dekton®

Dekton® stone surfaces are now available for use on these models:

HCSSBR		HCSSBX	
· HCSSBR-2418	· HCSSBR-3618	· HCSSBX-2418	· HCSSBX-3618
· HCSSBR-3018	· HCSSBR-4818	· HCSSBX-3018	· HCSSBX-4818

OPTIONS (available at time of purchase only)

Dekton® Stone Colors – All Dekton surfaces are non-returnable –

HCSSBR-2418 – Hot/Cold Built-In Shelves –

DOMOOS	Domoos	\$625
REM	Rem	625
SOKE	Soke	625

HCSSBR-3618 – Hot/Cold Built-In Shelves –

DOMOOS	Domoos	\$1012
REM	Rem	1012
SOKE	Soke	1012

HCSSBR-3018 – Hot/Cold Built-In Shelves –

DOMOOS	Domoos	\$878
REM	Rem	878
SOKE	Soke	878

HCSSBR-4818 – Hot/Cold Built-In Shelves –

DOMOOS	Domoos	\$1057
REM	Rem	1057
SOKE	Soke	1057

HCSSBX-2418 – Hot/Cold Built-In Shelves –

DOMOOS	Domoos	\$625
REM	Rem	625
SOKE	Soke	625

HCSSBX-3618 – Hot/Cold Built-In Shelves –

DOMOOS	Domoos	\$1012
REM	Rem	1012
SOKE	Soke	1012

HCSSBX-3018 – Hot/Cold Built-In Shelves –

DOMOOS	Domoos	\$878
REM	Rem	878
SOKE	Soke	878

HCSSBX-4818 – Hot/Cold Built-In Shelves –

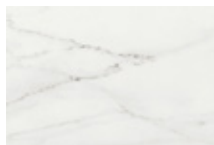
DOMOOS	Domoos	\$1057
REM	Rem	1057
SOKE	Soke	1057

Dekton® surfaces that are available for these models:

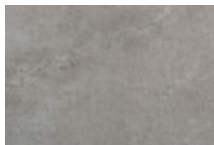
Domoos



Rem



Soke





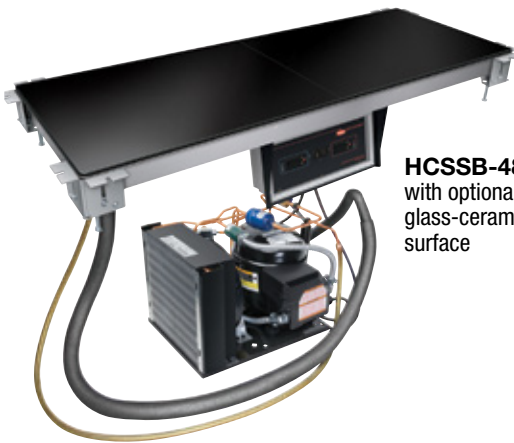
Optional Glass-Ceramic Top Surfaces for Hot/Cold Built-In Simulated Stone Shelves

Hatco's HCSSB, HCSSBR and HCSSBX Hot/Cold Built-In Simulated Stone Shelves not only easily transition between heated and cold shelves, but now they include an optional sleek black or white glass-ceramic top surface to elevate foodservice operations.

- Available with a black or white glass-ceramic top surface at no additional cost
- Glass-ceramic surfaces are made with approved foodsafe materials



HCSSBX-4818 with optional black glass-ceramic top surface



HCSSB-4818 with optional black glass-ceramic top surface



HCSSBR-4818 with optional white glass-ceramic top surface

Glass-ceramic top surfaces are now available in black or white on these models at no additional cost:

HCSSB		HCSSBR		HCSSBX	
• HCSSB-2418	• HCSSB-3618	• HCSSBR-2418	• HCSSBR-3618	• HCSSBX-2418	• HCSSBX-3618
• HCSSB-3018	• HCSSB-4818	• HCSSBR-3018	• HCSSBR-4818	• HCSSBX-3018	• HCSSBX-4818

OPTIONS (available at time of purchase only)

Glass-Ceramic Colors –

BLACKGLASS	Black Glass-Ceramic Top	No Charge
WHITEGLASS	White Glass-Ceramic Top	No Charge

NOTE: The HCSSB-4818, HCSSBR-4818 and HCSSBX-4818 models with the glass-ceramic top surface option will be made with two pieces of glass-ceramic, and will have a 1/8" seam in the middle where the sections of glass meet (shown in images above). All other sized units will have surfaces that consist of a single piece of glass-ceramic.