



Project \_\_\_\_\_

Item # \_\_\_\_\_

Quantity \_\_\_\_\_

# Churro Maker

Models:

KWM18-16CH, -32CH

This professional Hatco®/Krampouz® Churro Maker easily makes churros without the need for frying. Great for takeaway service, these finger foods are perfect for dipping in a variety of sauces. Churros are fun, handy sized treats that can be enjoyed as a sweet or savory option for an original snack or appetizer.

The Churro Makers can cook either 16 or 32 churros at the same time. Its 180° opening means that the batter spreads perfectly over the two plates, so all the churros cook evenly.

The professional churro maker features the Easy Clean System, so you can quickly disassemble the irons to clean them with a brush, and it also comes with the Heating Element Pack for perfect heat distribution over the cast iron plate surfaces.

## Standard features

- KWM18 models are designed with 180° hinged churro plates for cooking churros from batter or dough
- Stainless steel frame, with a cast iron plates, is designed for quality and durability
- Innovative Easy Clean System® allows for instant removal of the churro plates, providing ease of maintenance and increased reliability
- Adjustable Thermostatic Control(s) with a range from 120°F – 570°F (50°C – 300°C) allows for precise temperature control
- Also comes with a power indicator, a heating indicator, a removable drip tray and a 6' (1829 mm) cord and plug



KWM18-16CH single churro maker



KWM18-32CH dual churro maker

## Accessories

- Waffle Pick - Metal Forks with Plastic Handle



For operation, location and safety information, please refer to the Installation and Operating Manual.



[www.hatcocorp.com](http://www.hatcocorp.com) | [support@hatcocorp.com](mailto:support@hatcocorp.com) | [Find a Hatco Rep](#) | [Image Library](#) | [Document Library](#) | [Patents](#) | [Chat](#)



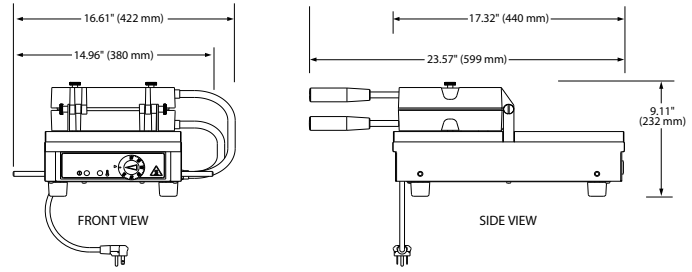
# Churro Maker

Models: KWM18-16CH, -32CH

## KWM18-16CH

### 180° HINGE, SINGLE HEAD CHURRO MAKERS

These models have 180° hinged churro plates and are designed for cooking churros from batter/dough.



## SPECIFICATIONS

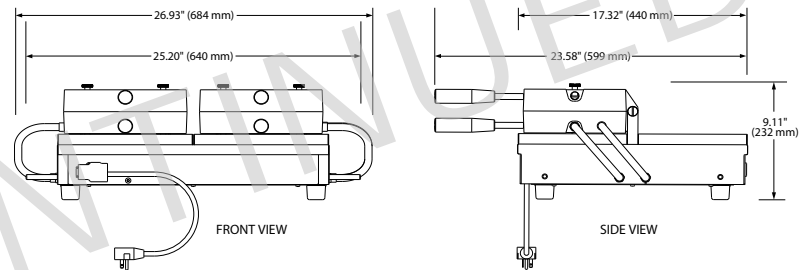
### 180° Hinge, Single Head Churro Maker

Model	Item No.	Description	Dimensions (W x D x H)	Voltage	Watts	Amps	Plug	Approx. Ship Weight
KWM18-16CH	KWM18.16CH515	180°, single, square	16.61" x 23.57" x 9.11" (422 x 599 x 232 mm)	120	1440	12.0	NEMA 5-15P	43 lbs. (19.4 kg)

## KWM18-32CH

### 180° HINGE, DUAL HEAD CHURRO MAKERS

These models have 180° hinged churro plates and are designed for cooking churros from batter/dough.



## SPECIFICATIONS

### 180° Hinge, Dual Head Churro Maker

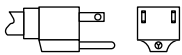
Model	Item No.	Description	Dimensions (W x D x H)	Voltage	Watts	Amps	Plug	Approx. Ship Weight
KWM18-32CH	KWM18.32CH620	180°, dual, square	26.93" x 23.58" x 9.11" (684 x 599 x 232 mm)	208-240	2704-3600	13.0-15.0	NEMA 6-20P	77 lbs. (34.7 kg)

## CORD LOCATION

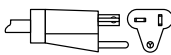
- 16CH515 - Bottom left side of unit.
- 32CH620 - Back of the unit.

## PLUG CONFIGURATION

### NEMA 5-15P



### NEMA 6-20P



## PRODUCT SPECS

### Churro Makers

The Churro Makers shall be Model ... as distributed by the Hatco Corporation, Milwaukee, WI 53234 U.S.A.

The Churro Maker shall be rated at ... watts, ... volts, and be ... inches (millimeters) in overall width.

It shall consist of stainless steel frame and cast iron churro plates. Churro Makers feature removable cast iron churro plates. The Churro Makers' Easy Clean System

provides quick removal and easy cleaning of the churro plates. Also, an adjustable Temperature Control(s), a power indicator and a removable drip tray. All units are equipped with a factory attached 6' (1829 mm) power cord and plug.

Accessories shall include a waffle pick.

Warranty consists of 24/7 parts and service assistance (US and Canada only).

**HATCO CORPORATION** | P.O. Box 340500 Milwaukee, WI 53234-0500 U.S.A. | (414) 671-6350



[www.hatcocorp.com](http://www.hatcocorp.com) | [support@hatcocorp.com](mailto:support@hatcocorp.com) | [Find a Hatco Rep](#) | [Image Library](#) | [Document Library](#) | [Patents](#) | [Chat](#)