



Project \_\_\_\_\_  
Item # \_\_\_\_\_  
Quantity \_\_\_\_\_

## Countertop Induction Griddle

Models: IGRID-2418-FS

Built to withstand the rigorous demands of commercial foodservice kitchens, Hatco's heavy-duty Induction Griddle is the ultimate countertop workhorse. This versatile unit delivers exceptional performance across a wide range of menu items — from fluffy pancakes to juicy burgers and more — with a durable, polished steel surface designed for high-volume use. It also includes a wide grease trough, an oversized drain, and a removable grease pan to ensure hassle-free cleanup. This griddle is a must-have for any operation looking to combine efficiency, durability and precision cooking.

### Standard features:

- Cooktop reaches 350°F (177°C) in 12 minutes for a fast, efficient startup
- Maximum cooking temperature of 550°F (288°C)
- Features a ¾" (19 mm) flat, polished steel cooktop, sized at 24"W x 18"D (610 x 457 mm)
- Power Save Mode maintains a lower, user-set temperature to reduce energy use without shutting off the unit
- 12 induction coils deliver consistent, even heat distribution across the entire cooking surface
- Two independently controlled heat zones, each with four temperature sensors, ensure responsive and reliable temperature management
- Each heat zone features a digital readout and control knob for 1° adjustments, offering precise control to reach and maintain desired cooking temperatures
- Attached 4.18" (106 mm) wide grease trough, oversized drain, and easily removable grease pan simplify cleanup
- Comes equipped with a 71" (1823 mm) cord and plug for convenient installation

IGRID-2418-FS



### Accessories

- ☐ 10" (254 mm) Plate Rail



Plate Rail Accessory  
placement shown on  
IGRID-2418-FS



**HATCO CORPORATION**

P.O. Box 340500 Milwaukee, WI 53234-0500 U.S.A. | (414) 671-6350



[www.hatcocorp.com](http://www.hatcocorp.com)

[support@hatcocorp.com](mailto:support@hatcocorp.com)

[Find a Hatco Rep](#)

[Image Library](#)

[Document Library](#)

[Patents](#)

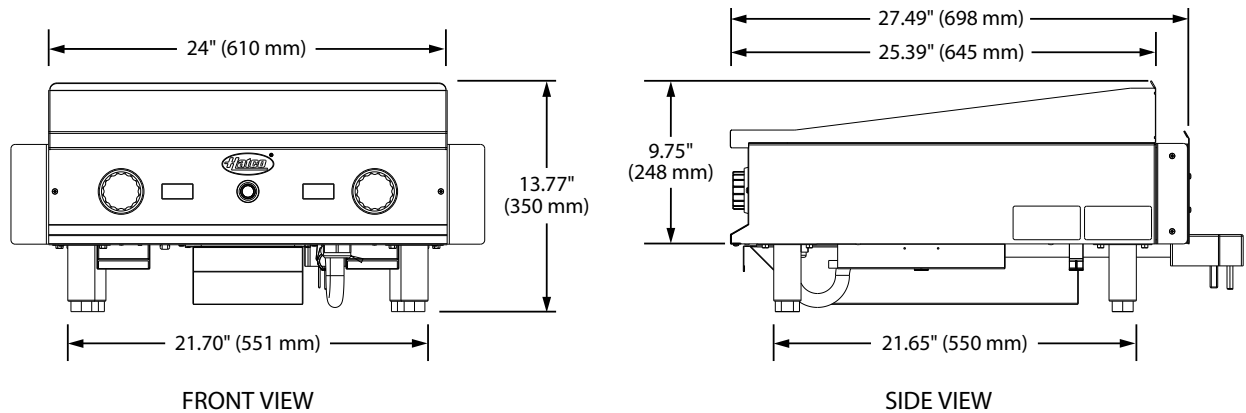
[Chat](#)



# Countertop Induction Griddle

Models: IGRID-2418-FS

## IGRID-2418-FS Model

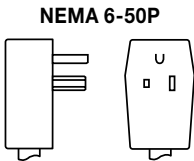


## SPECIFICATIONS

### Countertop Induction Griddle

Model	Dimensions (Width x Depth x Height)	Volts	Phase	Watts	Hz	Amps	Plug	Cord Location
IGRID-2418-FS	24" x 27.49" x 13.77" (610 x 698 x 350 mm)	208-240	Single	6240-7200	50-60	30	NEMA 6-50P	Front Right on the bottom of the unit

## PLUG CONFIGURATIONS



## PRODUCT SPECS

### Countertop Induction Griddle

The Countertop Induction Griddle shall be manufactured by the Hatco Corporation, Milwaukee, WI 53234 U.S.A.

The Induction Griddle shall be rated at ... watts, ... volts, single phase and be ... inches (millimeters) in overall width. The griddle shall consist of a stainless steel housing with an aluminum base, a flat steel surface, 12 induction coils, two heat

zones, four temperature sensors per heat zone, two digital temperature displays, two infinite controls, and a 71" (1823 mm) cord and plug.

Warranty consists of 24/7 parts and service assistance (US and Canada only).